



CHAIN

Quarterly Report for City of London April-June 2010



CHAIN Quarterly report for City of London 1st April to 30th June 2010

Contents

Outreach Work

1) Rough sleeping

People seen by outreach or building based (BBS) teams in the quarter - rough sleeping or contacted either on the streets or in services

2) Rough sleeping volume

People seen rough sleeping by number of bedded down contacts during the quarter

3) Nationality of rough sleepers

People seen rough sleeping by outreach or BBS teams during the quarter

4) People contacted by month

People seen rough sleeping by outreach or building based (BBS) teams by month

5) No booking into accommodation events

People contacted in the quarter with no accommodation events (booking or referrals) by any outreach or BBS team, by total number of street contacts recorded on CHAIN

6) Booking into accommodation and reconnection events

Outreach accommodation (bookings and referrals) and reconnection events achieved in the quarter by type of accommodation

7) Booking into accommodation (rolling)

People who have been contacted by outreach or building based (BBS) teams who have been booked into accommodation compared to those with no booking or reconnection event.

Wider street population

8) Street activity

Street population (people who rough sleep and/or engage in a street lifestyle) contacted by outreach who fall into one or more of the street activity categories on CHAIN

Hostels, assessment centres, rolling shelters and second stage accommodation

9) Arrivals

Temporary accommodation arrivals by accommodation project and source of referral.

10) Departures - reason for leaving

Departures by whether or not the departure was planned or unplanned

11) Departures - destination on departure

Departure actions by destination on departure

Support needs, experience of prison, armed forces and care, and wider street population

12) Support needs

People contacted by outreach or BBS teams and/or arriving in accommodation in the quarter by support needs

13) Experience of prison, armed forces and care

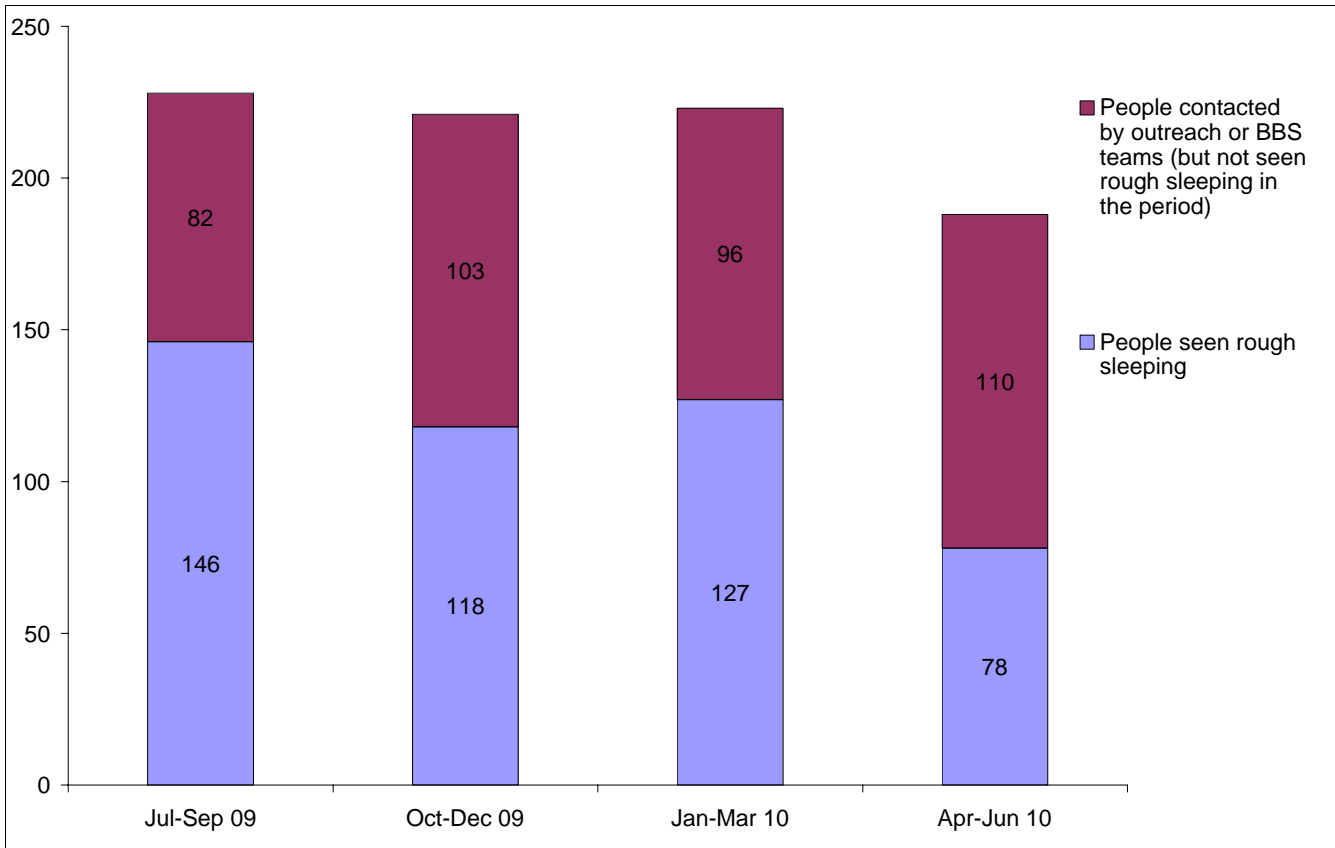
People contacted by outreach or BBS teams and/or arriving in accommodation in the quarter by experience of the armed forces, care or prison

CHAIN Quarterly report for City of London

Outreach Work

1) Rough sleeping

People seen by outreach or building based (BBS) teams in the quarter - rough sleeping or contacted either on the streets or in services



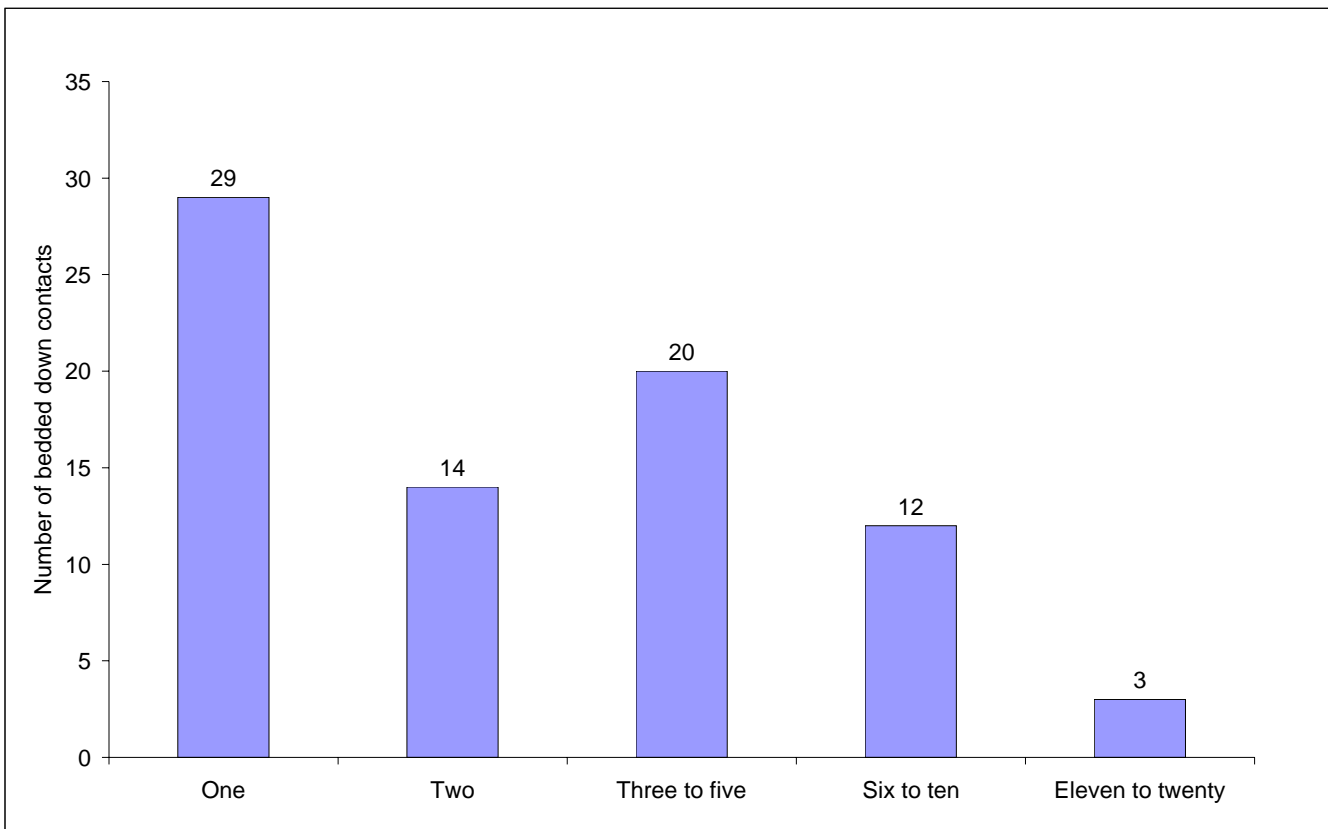
Jul-Sep 09 base: 228
Oct-Dec 09 base: 221
Jan-Mar 10 base: 223
Apr-Jun 10 base: 188

188 verified rough sleepers were contacted by services in City of London during the quarter. This is a decrease from 223 last quarter and compares to 203 in the same quarter last year.

Of these 188, 78 had a bedded down street contact in the quarter and so were known to have slept rough in City of London during the quarter. The number sleeping rough this quarter has decreased by 39%.

2) Rough sleeping volume

People seen rough sleeping by number of bedded down contacts during the quarter



Base: 78

Of the 78 people seen rough sleeping this quarter, 29 only had a single bedded down street contact.

Of the 78 people seen bedded down, 11 were from CEE countries and seen only once during the period.

NB CEE nationals often cannot be offered the same service as other people due to benefit restrictions.

3) Nationality of rough sleepers

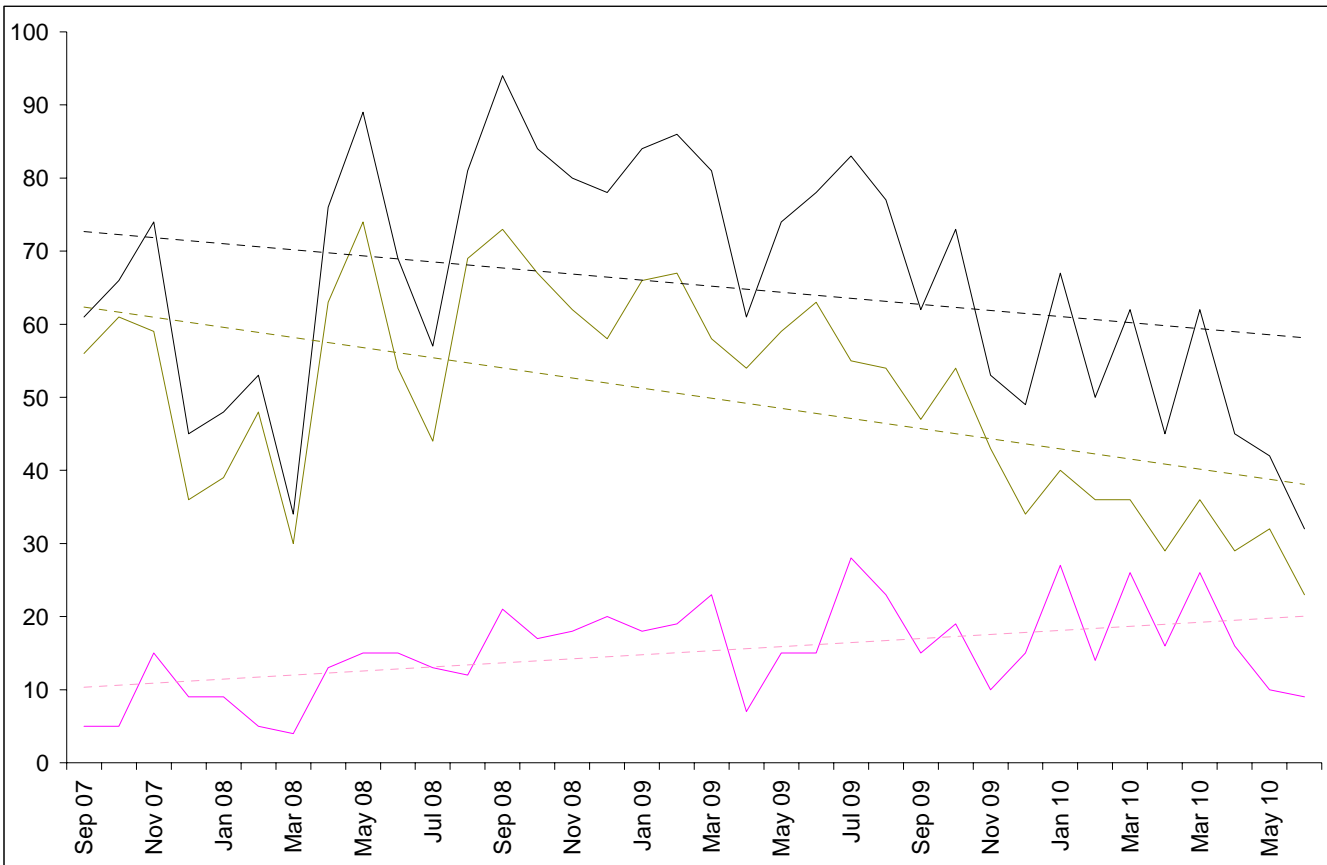
People seen rough sleeping by outreach or BBS teams during the quarter

Nationality	This 1/4	%	Last 1/4	%
UK	28	39%	56	46%
Ireland (Republic of)	4	6%	3	2%
France	2	3%	1	1%
Italy	2	3%	1	1%
Spain	2	3%	0	0%
Bulgaria	1	1%	1	1%
Czech Republic	0	0%	1	1%
Estonia	1	1%	1	1%
Hungary	0	0%	0	0%
Latvia	2	3%	1	1%
Lithuania	10	14%	12	10%
Poland	9	13%	32	26%
Romania	4	6%	4	3%
Slovenia	0	0%	0	0%
Slovakia	0	0%	1	1%
Central and East European (CEE) sub-total	27	38%	53	43%
other Europe	4	6%	5	4%
Ethiopia	1	1%	1	1%
other Africa	1	1%	1	1%
America	0	0%	0	0%
Asia	1	1%	2	2%
Australasia	0	0%	0	0%
Missing	6		3	
Not known	0		1	
Total	78		127	
Total**	72		123	

**This total excludes those people seen rough sleeping where their nationality is not known

4) People contacted by month

People seen rough sleeping by outreach or building based (BBS) teams by month



The black line shows the total number of people seen rough sleeping.

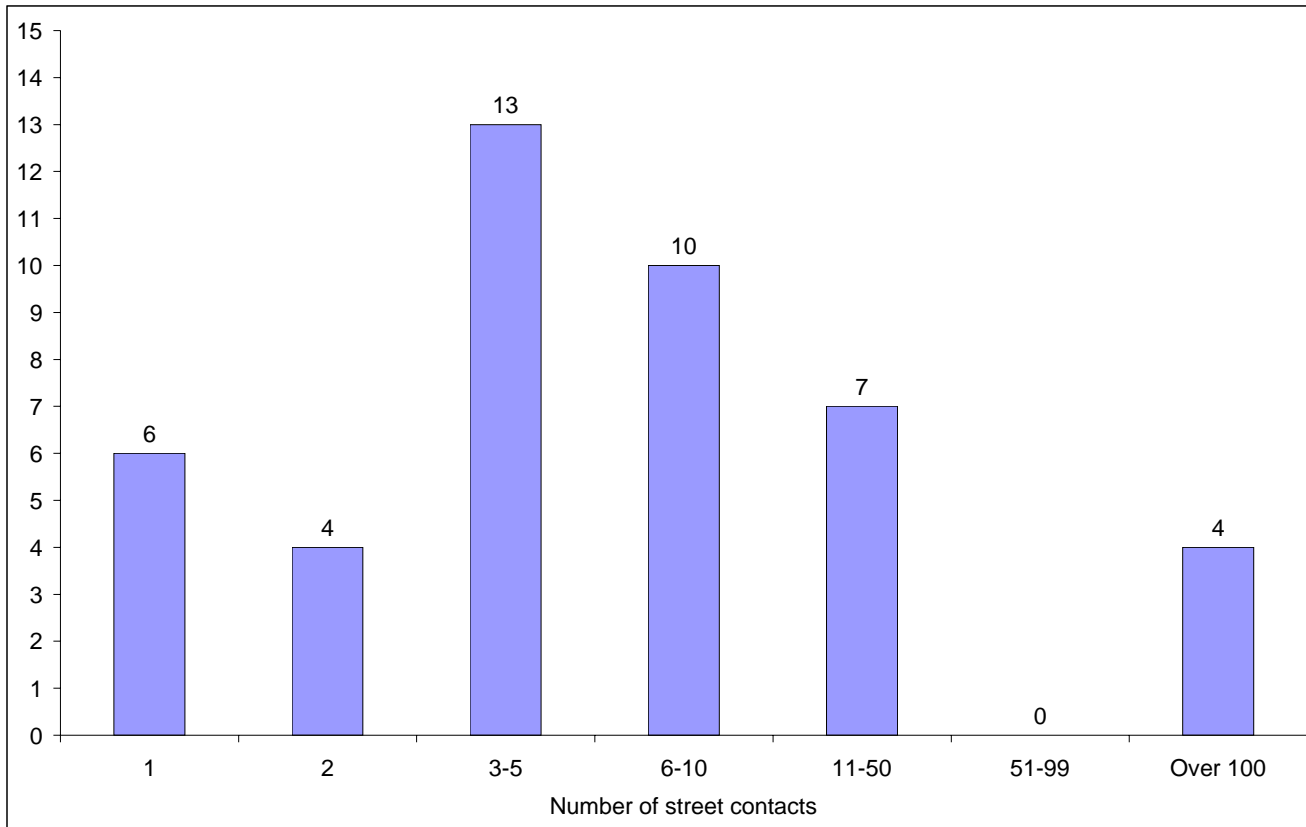
The green line shows the number of people seen rough sleeping excluding anyone from Central and East European (CEE) countries.

The pink line shows the number of people seen rough sleeping from CEE countries.

The difference in trend lines indicates the increasing influence of CEE nationals on the upward trend in people seen rough sleeping by outreach teams in London.

5) No booking into accommodation events

People contacted in the quarter with no accommodation events (booking or referrals) by any outreach or BBS team, by total number of street contacts recorded on CHAIN



Base: 44

44 (23%) verified rough sleepers contacted across City of London this quarter have never had a booking in action recorded on CHAIN. This has been falling over the past year: Jul-Sept, 47%; Oct-Dec, 38%; Jan-Mar, 33%.

26 of these people have slept rough in the quarter, which is 33% of all people sleeping rough this quarter.

6 (14%) of the people who have never had a booking in action recorded on CHAIN have only ever had one street contact recorded.

4 people in the City of London have never had a booking in action despite having over a hundred street contacts. This is consistent with previous quarters.

6) Booking into accommodation and reconnection events

Outreach accommodation (bookings and referrals) and reconnection events achieved in the quarter by type of accommodation

Accommodation type	No. of events	%
Assessment centre	0	0%
Bed & breakfast	0	0%
Clinic/Detox/Rehab	0	0%
Night Centre	0	0%
Rolling shelter	0	0%
<i>Referrals only (no booking in)</i>	6	
Hostel	29	53%
<i>Referral rejected (no booking in)</i>	1	
Other temporary	0	0%
Second-stage accommodation	0	0%
St Mungo's complex needs	0	0%
St Mungo's semi-independent	0	0%
Clearing House/RSI	0	0%
LA tenancy (general needs)	0	0%
Private rented sector	0	0%
Private rented sector - independent	0	0%
Private rented sector - with some floating support/support	0	0%
RSL tenancy (general needs)	0	0%
Sheltered housing	0	0%
Supported housing	0	0%
Other long-term accommodation	0	0%
Bookings into accommodation total	29	53%
Return to home area	17	31%
Seeking work	0	0%
Move to area for friends/family	2	4%
Move to area with appropriate services	7	13%
Reconnections total	26	47%
TOTAL	55	100%

Outreach teams across City of London succeeded in reconnecting or booking into accommodation 33 people, 18% of the 188 people contacted during the quarter.

This is lower than last quarter 76 people (34%), but the same as the first quarter of last year.

23 people had a total of 29 booking in events. This indicates that individuals can be booked into accommodation (the same type or different) more than once in the quarter.

No-one was booked into long-term accommodation. This is lower than previous quarters: Jul-Sept, 5; Oct-Dec, 6; Jan-Mar, 5.

29 people were booked in or referred to hostel accommodation. This means that 6 people were referred without actually being booked in whereas 23 people were actually booked into a confirmed place at a hostel.

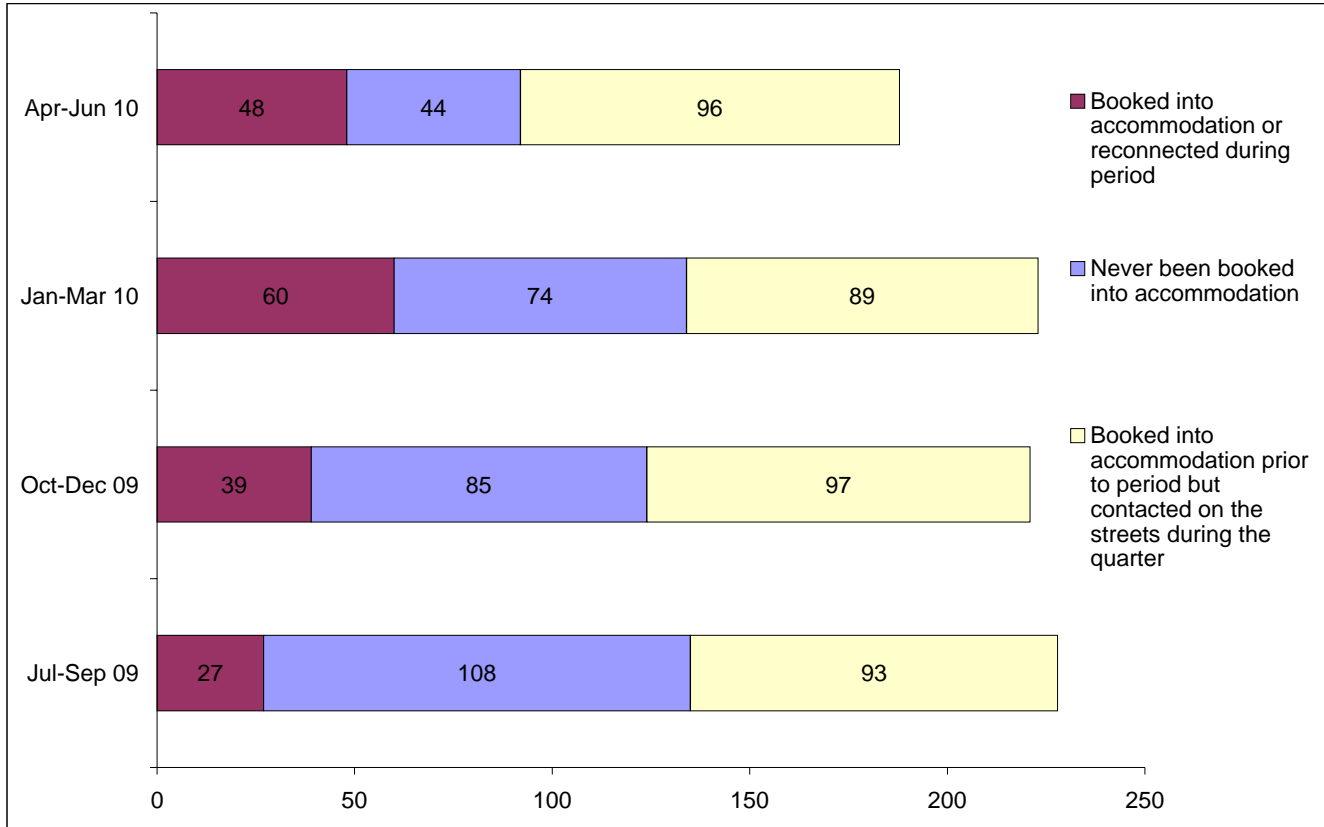
Outreach teams across City of London achieved a confirmed reconnection with 12 people they contacted this quarter. This is 6% of the people contacted by outreach or BBS teams this quarter.

26 confirmed reconnection events were recorded by outreach and BBS teams for verified rough sleepers this quarter. In addition, teams recorded 0 such actions for the wider street population (people not seen sleeping rough).

* These events are excluded from the total. Referral to hostel is a speculative referral to a hostel, confirmation of which leads to a booking in action being recorded.

7) Booking into accommodation (rolling)

People who have been contacted by outreach or building based (BBS) teams who have been booked into accommodation compared to those with no booking or reconnection event.

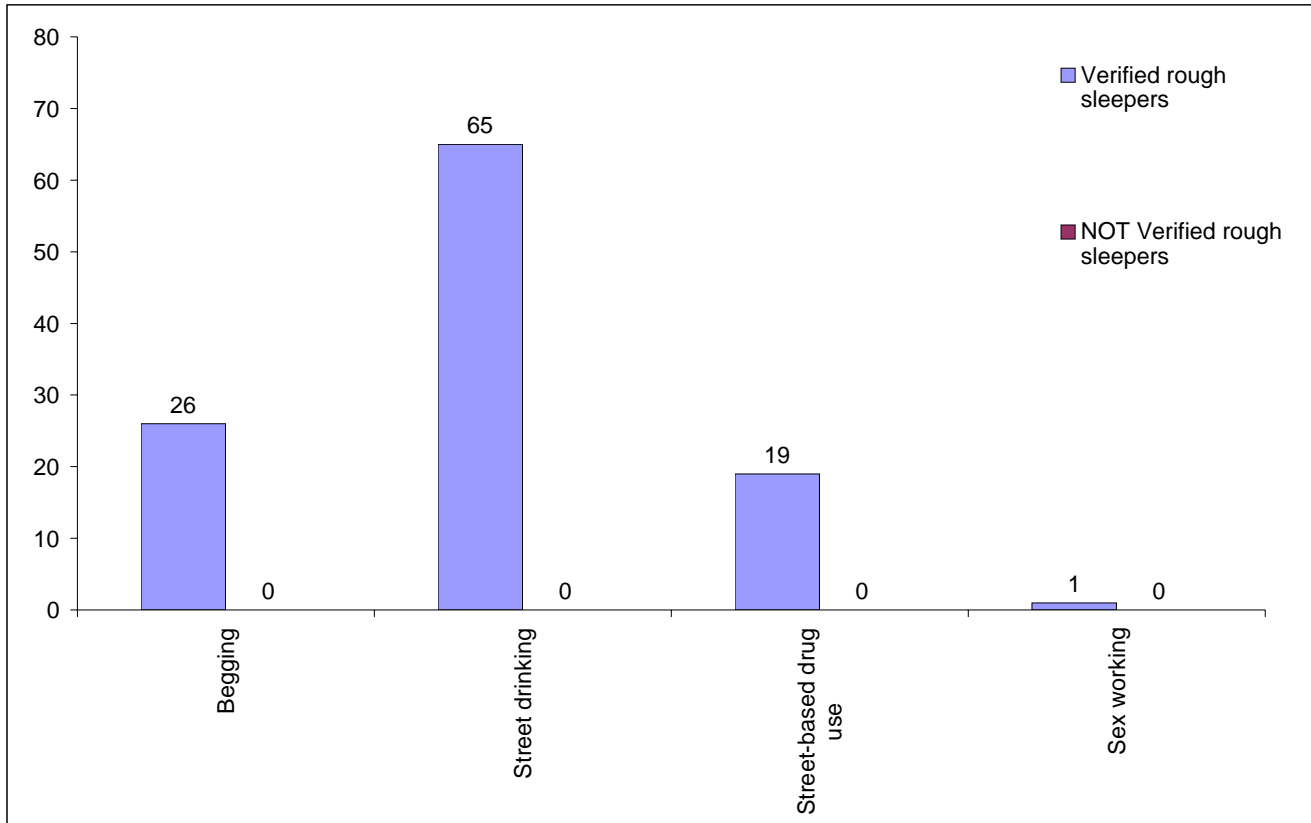


Jul-Sep 09 base: 228
 Oct-Dec 09 base: 221
 Jan-Mar 10 base: 223
 Apr-Jun 10 base: 188

The proportion of people with a street contact but who have never been booked into accommodation (23%), has been falling over the past year: Jul-Sept, 47%; Oct-Dec 38%; Jan-Mar 33%.

8) Street activity

Street population (people who rough sleep and/or engage in a street lifestyle) contacted by outreach who fall into one or more of the street activity categories on CHAIN



Base for verified rough sleepers: 83

Base for people not verified as rough sleepers: 1

Of the 188 verified rough sleepers contacted this quarter, 83 (44%) have been assessed as engaging in one or more street activities.

Some of these people contacted this quarter have been seen engaging in more than one type of street activity at some point.

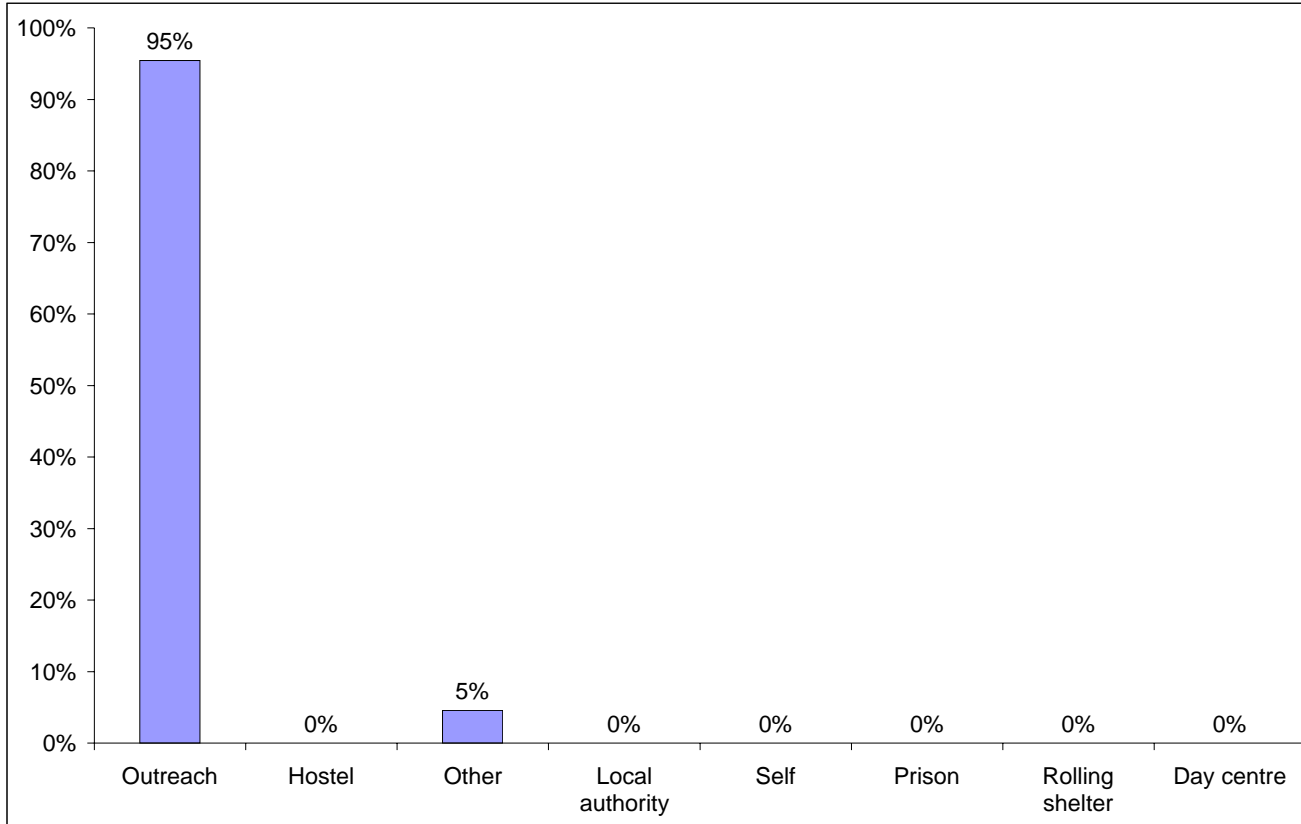
In addition to the 188 verified rough sleepers contacted in the quarter by outreach or BBS teams, 1 person who is considered vulnerable but has not been seen rough sleeping was also contacted. Of these:

1 had a confirmed reconnection.

Temporary Accommodation: hostels, assessment centres, rolling shelters and second stage

9) Arrivals

Temporary accommodation arrivals by accommodation project and source of referral.



Base: 22

22 people arrived at accommodation in City of London this quarter. These 22 people had 22 arrival events.

The numbers of people arriving and arrivals are significantly higher than last quarter (3) which can be explained by the fact that the The City Lodge opened this quarter and participates in CHAIN.

Breakdown by accommodation:

Source of referral	BBS - CSTM	BBS - St Mungo's	City Rough Sleepers Team	City Personal Budgets	London Street Rescue	other referral source)	Total
St Mungo's - The Lodge	4	8	7	1	1	1	22
Total	4	8	7	1	1	1	22

10) Departures - reason for leaving

Departures by whether or not the departure was planned or unplanned

9 people departed from accommodation in City of London this year. These 9 people had 9 departure actions.

As with arrivals, the number of people departing and departures is higher than previous quarters.

100% of departures were due to abandonments. This is consistent with last quarter.

There were no evictions. This is consistent with last quarter.

Breakdown by accommodation

Planned/Unplanned →	Abandoned	Total
Accommodation ↓		
St Mungo's - The Lodge	9	9
Total	9	9

11) Departures - destination on departure

Departure actions by destination on departure

Destination on departure from temporary accommodation	Number	%
Bed & Breakfast	0	0%
Care home	0	0%
Clearing House/RSI	0	0%
Detox clinic	0	0%
Died	0	0%
Home area	0	0%
Hospital - long term	0	0%
Hospital - NOT long term/acute care	0	0%
Hostel	0	0%
Hostel - another organisation	0	0%
Hostel - within the organisation	0	0%
LA tenancy (general needs)	0	0%
Long-term accommodation	0	0%
Not known	6	67%
Outside London	0	0%
Previous home (describe type of accomm in notes)	0	0%
Private rented sector - independent	0	0%
Private rented sector - with some floating support/support	0	0%
Psychiatric hospital	0	0%
Rehab clinic	0	0%
RSL tenancy (general needs)	0	0%
Sheltered Housing	0	0%
Sleeping rough/Returned to streets	3	33%
Staying with family	0	0%
Staying with friends	0	0%
Supported Housing	0	0%
Taken into custody	0	0%
Temporary accommodation	0	0%
Total	9	100%

No-one left accommodation to move to another hostel. This is consistent with last quarter.

No-one left accommodation to move to mid- or long-term accommodation. This is consistent with last quarter.

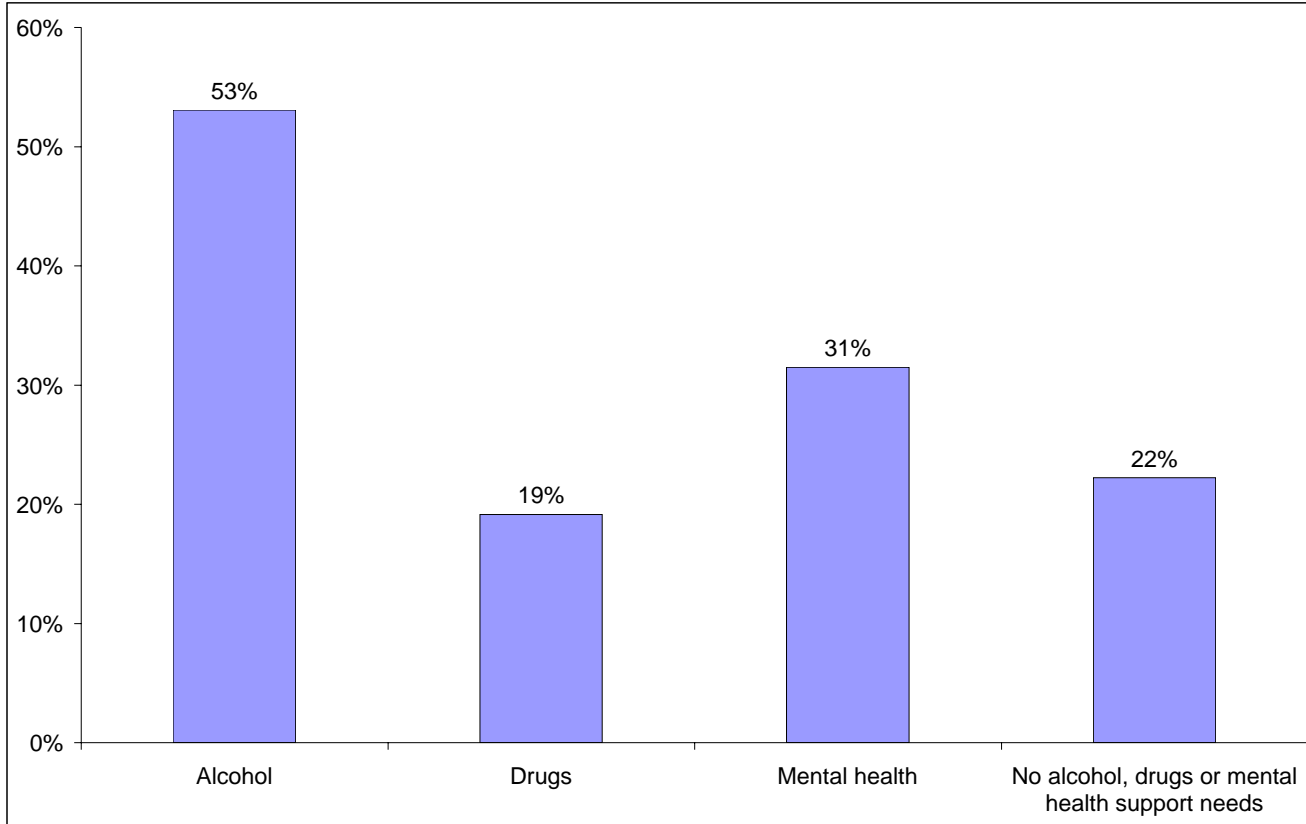
Breakdown by accommodation

Destination Accommodation	Not known	Sleeping rough/Returned	Total
St Mungo's - The Lodge	6	3	9
Total	6	3	9

Client Support Needs/Institutional History

12) Support needs

People contacted by outreach or BBS teams and/or arriving in accommodation in the quarter by support needs



Base: 162 Note that the base figure for this graph excludes clients where all 3 support needs are not known or not recorded (22).

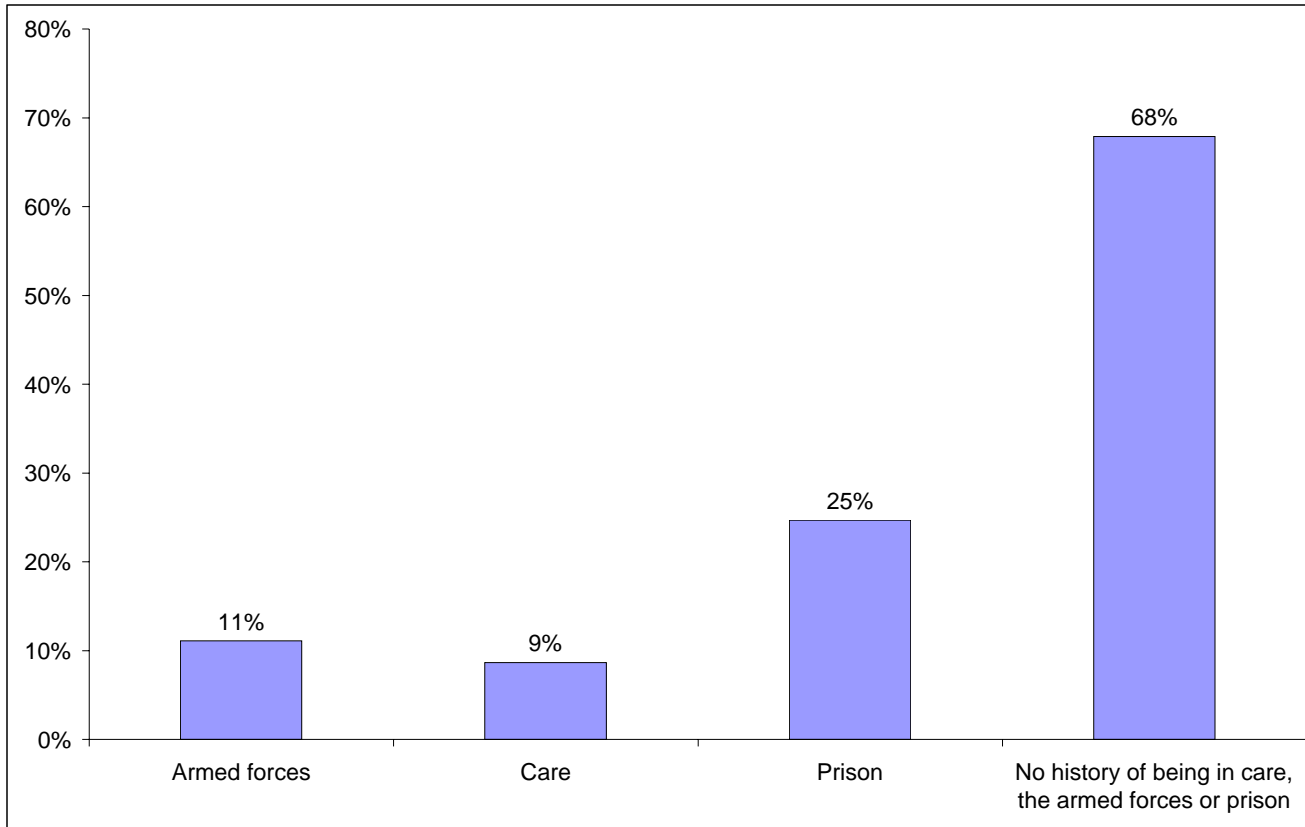
Support Needs	No. of people	%
Alcohol only	49	27%
Drugs only	10	5%
Mental health only	19	10%
Alcohol and drugs	8	4%
Alcohol and mental health	19	10%
Drugs and mental health	3	2%
Alcohol, drugs and mental health	10	5%
All 3 no	36	20%
All 3 not known or not assessed	22	12%
All 3 no, not known or not assessed	8	4%
Total	184	100%

The proportion of people contacted in City of London with an alcohol, drugs or mental health support need is consistent with the previous three periods.

The proportion of people contacted in City of London with a drug support need is lower than the proportion across all boroughs this quarter (38%).

13) Experience of prison, armed forces and care

People contacted by outreach or BBS teams and/or arriving in accommodation in the quarter by experience of the armed forces, care or prison



Base: 162 Note that the base figure for this graph excludes clients where all 3 institutional histories are not known.

18 people contacted in City of London this quarter have previously been in the armed forces (16 last quarter).

Nationality	Number	%
UK	11	61%
Non-UK	7	39%
Total	18	100%

14 people contacted in City of London this quarter have previously been in care (17 last quarter).

40 people contacted in City of London this quarter have previously been in prison (52 last quarter).

It is possible for someone contacted to have previous experience of more than one institution and so be included in more than one of the above figures. 8 people contacted in the year have been in care and prison.

The proportion of people contacted in City of London with previous experience of the armed forces, care or prison is consistent with the previous three quarters.

The proportion of people who have been in prison is lower than the proportion across all boroughs this quarter (40%).