



# CHAIN

## Quarterly Report for City of London April - June 2011



# CHAIN Quarterly report for 1st April to 30th June 2011

## Contents

### Outreach Work

#### 1) Rough sleeping

People seen by outreach or building based (BBS) teams in the quarter - rough sleeping or contacted either on the streets or in services

#### 2) Rough sleeping volume

People seen rough sleeping by number of bedded down contacts during the quarter

#### 3) Nationality of rough sleepers

People seen rough sleeping by outreach or BBS teams during the quarter by flow, stock and returner model.

#### 4) People contacted by month

People seen rough sleeping by outreach or building based (BBS) teams by month

#### 5) No booking into accommodation events

People contacted in the quarter with no accommodation events (booking or referrals) by any outreach or BBS team, by total number of street contacts recorded on CHAIN

#### 6) Booking into accommodation and reconnection events

Outreach accommodation (bookings and referrals) and reconnection events achieved in the quarter by type of accommodation

### Hostels, assessment centres, rolling shelters and second stage accommodation

#### 7) Arrivals

Temporary accommodation arrivals by accommodation project and source of referral.

#### 8) Departures - destination on departure

Departure actions by destination on departure

#### 9) Departures - reason for leaving

Departures by whether or not the departure was planned or unplanned

### Support needs, and institutional history

#### 10) Support needs

People contacted by outreach or BBS teams and/or arriving in accommodation in the quarter by support needs

#### 11) Experience of armed forces, care and prison

People contacted by outreach or BBS teams and/or arriving in accommodation in the quarter by experience of the armed forces, care or prison

### Wider street population

#### 12) Street activity

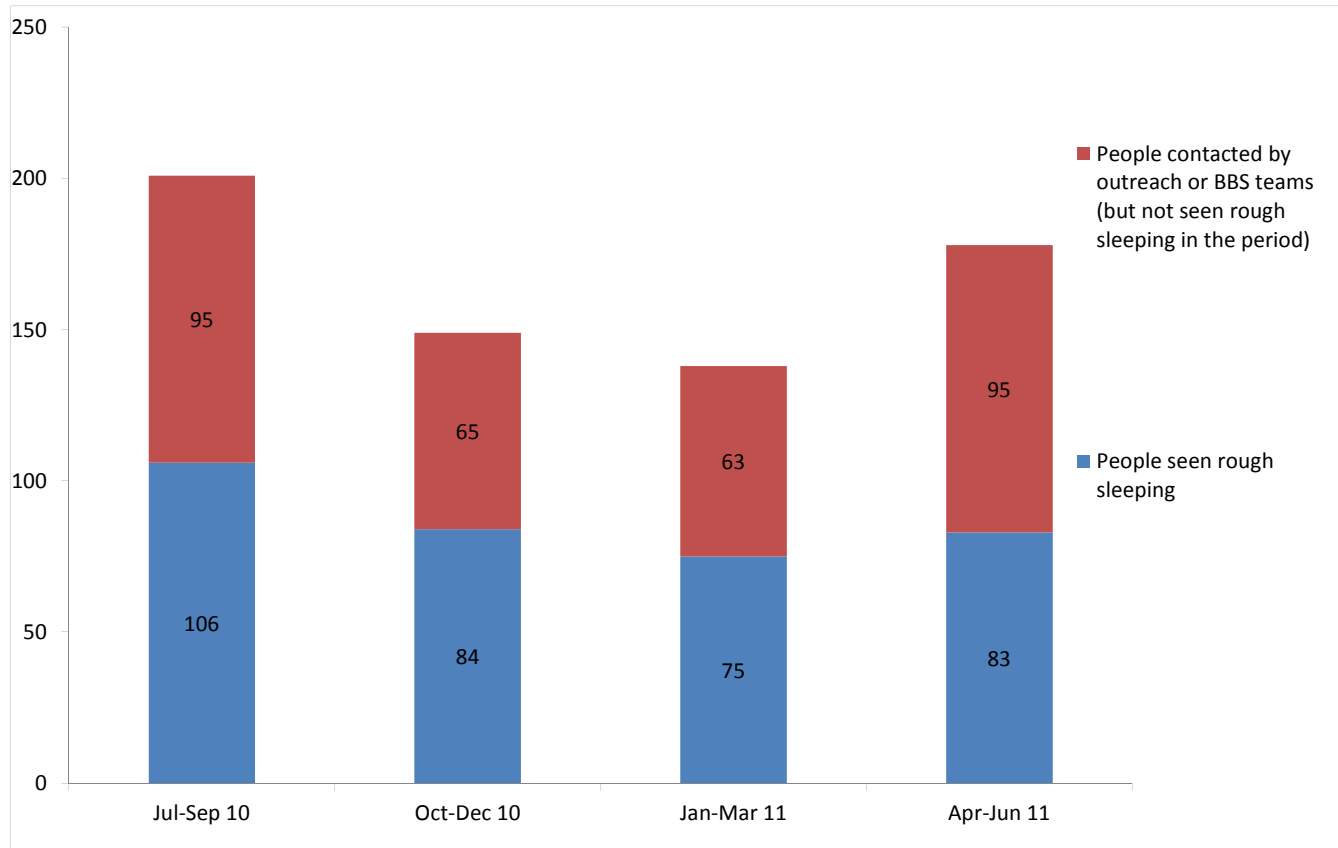
Street population (people who rough sleep and/or engage in a street lifestyle) contacted by outreach who fall into one or more of the street activity categories on CHAIN

# CHAIN Quarterly report for City of London

## Outreach Work

### 1) Rough sleeping

People seen by outreach or building based (BBS) teams in the quarter - rough sleeping or contacted either on the streets or in services



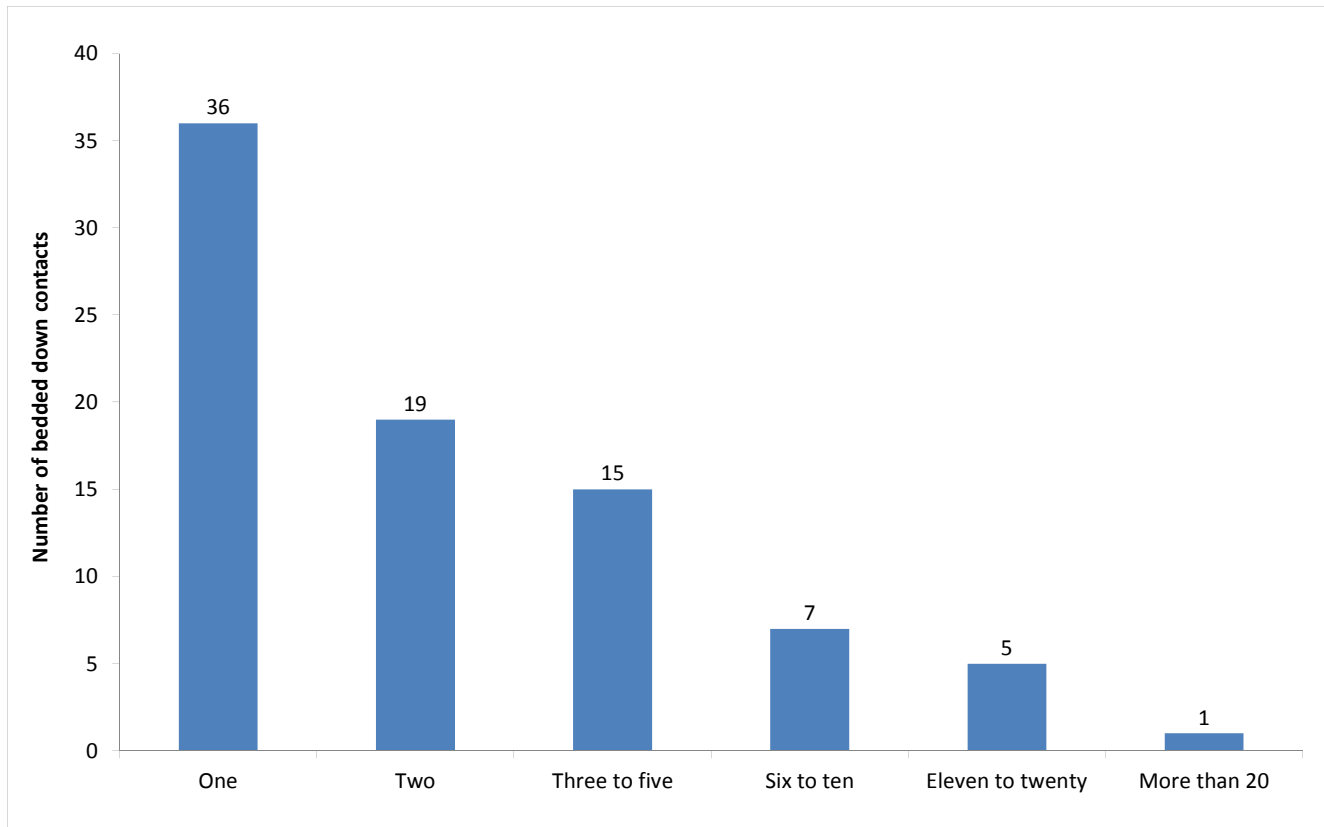
Jul - Sep 10 base: 201  
Oct - Dec 10 base: 149  
Jan - Mar 11 base: 138  
Apr - Jun 11 base: 178

178 verified rough sleepers were contacted by services in City of London during the quarter. This is an increase from 138 last quarter and compares to 188 in the same quarter last year.

Of these 178, 83 had a bedded down street contact in the quarter and so were known to have slept rough in City of London during the quarter. The number sleeping rough this quarter has increased by 11%.

## 2) Rough sleeping volume

People seen rough sleeping by number of bedded down contacts during the quarter



Base: 83

Flow this quarter was 22 (new people seen rough sleeping), comparing to 17 last quarter.

Of the 83 people seen rough sleeping this quarter, 36 only had a single bedded down street contact.

Of the 83 people seen bedded down, 8 were from CEE countries and seen only once during the period.

NB CEE nationals often cannot be offered the same service as other people due to benefit restrictions.

### 3) Nationality of rough sleepers

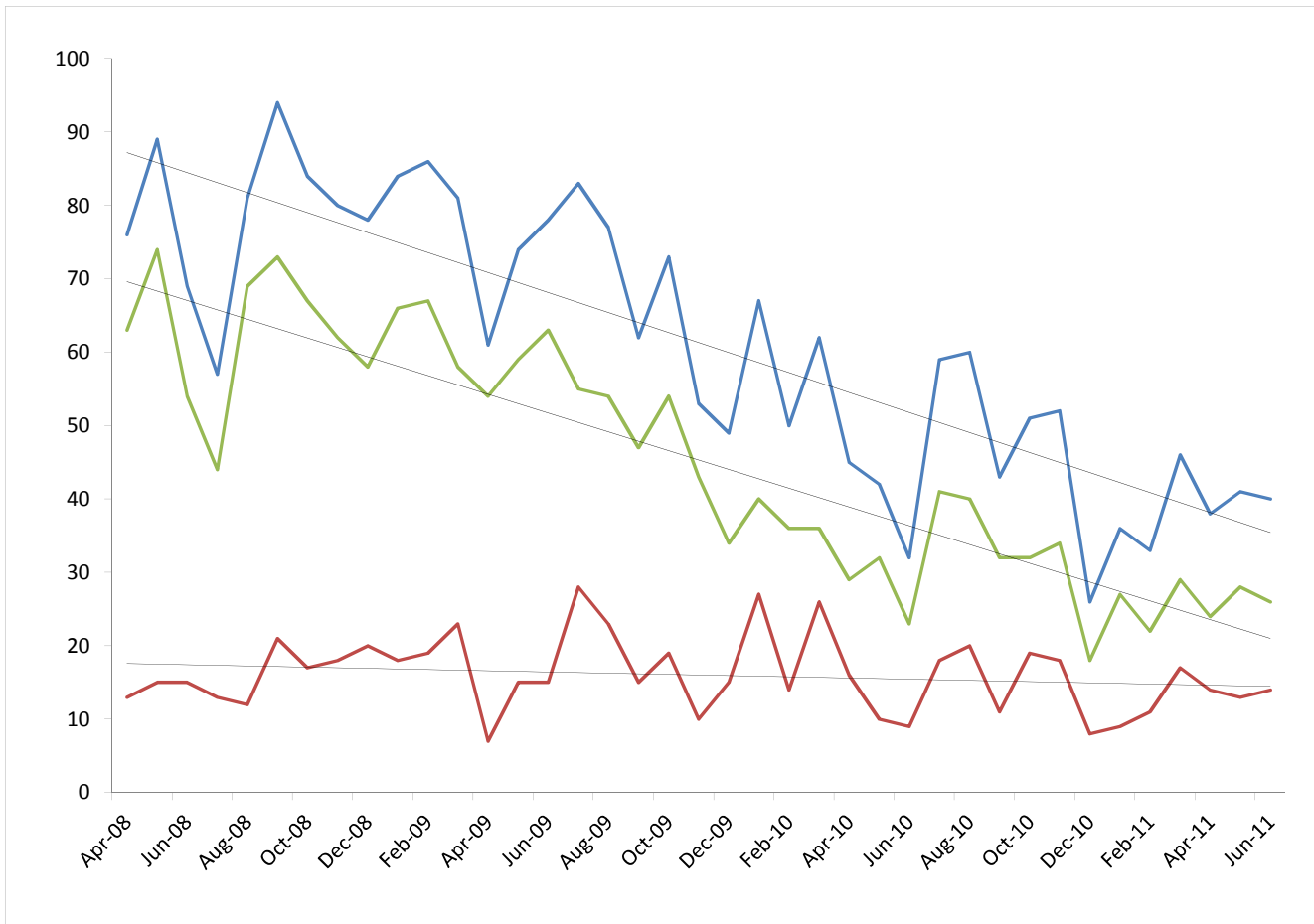
People seen rough sleeping by outreach or BBS teams during the quarter by flow, stock and returner model.

Nationality	Jul - Sep	%	Oct - Dec	%	Jan - Mar	%	Apr - Jun	%
UK	46	46%	34	44%	32	46%	41	52%
Ireland (Republic of)	3	3%	3	4%	4	6%	1	1%
Portugal	1	1%	0	0%	1	1%	0	0%
Bulgaria	1	1%	1	1%	1	1%	0	0%
Czech Republic	1	1%	0	0%	0	0%	0	0%
Estonia	1	1%	0	0%	0	0%	1	1%
Hungary	0	0%	1	1%	4	6%	1	1%
Latvia	1	1%	3	4%	3	4%	3	4%
Lithuania	3	3%	4	5%	6	9%	9	11%
Poland	18	18%	20	26%	8	11%	8	10%
Romania	9	9%	3	4%	0	0%	2	3%
Slovenia	0	0%	0	0%	0	0%	0	0%
Slovakia	0	0%	1	1%	1	1%	3	4%
<b>Central and East European (CEE) sub-total</b>	<b>34</b>	<b>34%</b>	<b>33</b>	<b>42%</b>	<b>23</b>	<b>33%</b>	<b>27</b>	<b>34%</b>
other Europe	12	12%	5	6%	5	7%	7	9%
Eritrea	0	0%	0	0%	0	0%	0	0%
Africa	1	1%	1	1%	2	3%	0	0%
America	0	0%	0	0%	0	0%	0	0%
Asia	2	2%	2	3%	3	4%	3	4%
Australasia	0	0%	0	0%	0	0%	0	0%
Missing	7		3		1		1	
Not known	0		3		4		3	
<b>Total</b>	<b>106</b>		<b>84</b>		<b>75</b>		<b>83</b>	
<b>Total**</b>	<b>99</b>	<b>100%</b>	<b>78</b>	<b>100%</b>	<b>70</b>	<b>100%</b>	<b>79</b>	<b>100%</b>

\*\*This total excludes those people seen rough sleeping where their nationality is not known

#### 4) People contacted by month

People seen rough sleeping by outreach or building based (BBS) teams by month



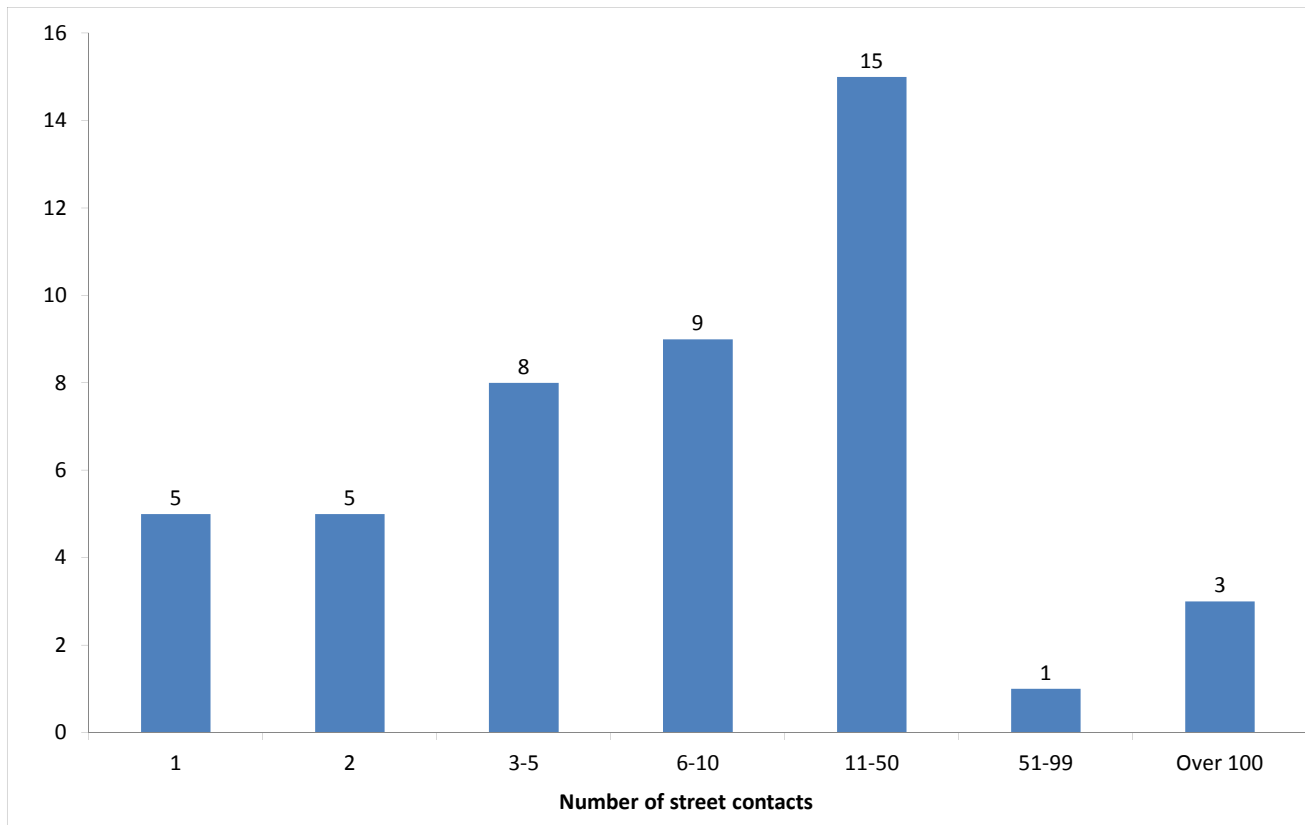
The black line shows the total number of people seen rough sleeping.

The green line shows the number of people seen rough sleeping excluding anyone from Central and East European (CEE) countries.

The pink line shows the number of people seen rough sleeping from CEE countries.

## 5) No booking into accommodation events

People contacted in the quarter with no accommodation events (booking or referrals) by any outreach or BBS team, by total number of street contacts recorded on CHAIN



Base: 46

46 (26%) verified rough sleepers contacted across City of London this quarter have never had a booking in action recorded on CHAIN. This compares to 39 (28%) in the previous period.

25 of these people have slept rough in the quarter, which is 30% of all people sleeping rough this quarter.

5 (11%) of the people who have never had a booking in action recorded on CHAIN have only ever had one street contact recorded.

3 people in City of London have never had a booking in action despite having over a hundred street contacts. This is similar to previous quarters (Jan-Mar:2, 5%; Oct-Dec:3, 7%; Jul-Sep:5, 1%).

## 6) Booking into accommodation and reconnection events

Outreach accommodation (bookings and referrals) and reconnection events achieved in the quarter by type of accommodation

Accommodation type	No. of Events	%
Assessment centre	0	0%
Bed & breakfast	7	13%
Clinic/Detox/Rehab	0	0%
Night Centre	0	0%
Rolling shelter	12	22%
Hostel	11	20%
Other temporary	0	0%
Second-stage accommodation	0	0%
St Mungo's complex needs	0	0%
St Mungo's semi-independent	0	0%
Clearing House/RSI	3	6%
LA tenancy (general needs)	1	2%
Private rented sector	0	0%
Private rented sector - independent	1	2%
Private rented sector - with some floating support/support	0	0%
RSL tenancy (general needs)	0	0%
Sheltered housing	0	0%
Supported housing	0	0%
Other long-term accommodation	0	0%
<b>Bookings into accommodation total</b>	<b>35</b>	<b>65%</b>
Return to home area	15	28%
Seeking work	0	0%
Move to area for friends/family	2	4%
Move to area with appropriate services	4	7%
Other	0	0%
<b>Reconnections total</b>	<b>19</b>	<b>35%</b>
<b>TOTAL</b>	<b>54</b>	<b>100%</b>

Outreach and BBS teams across City of London succeeded in reconnecting or booking into accommodation 44 people, 25% of the 178 people contacted during the quarter.

This is a similar proportion compared to previous periods - (Jan - Mar: 22%; Oct - Dec: 25%; Jul - Sep: 20%).

22 people had a total of 35 booking in events. This indicates that individuals can be booked into accommodation (the same type or different) more than once in the quarter.

1 person was booked into private rented sector accommodation, 3 into Clearing House flats and 1 into LA general needs accommodation.

11 people were booked into hostel accommodation. This is similar to previous periods (Jan-Mar: 8; Oct-Dec: 12; Jul-Sep: 14).

Outreach and BBS teams across City of London achieved a confirmed reconnection with 17 people they contacted this quarter. This is 10% of the people contacted by outreach or BBS teams this quarter.

19 confirmed reconnection events were recorded by outreach and BBS teams for verified rough sleepers this quarter. In addition, teams recorded 7 such actions for the wider street population (people not seen sleeping rough).

In addition, 18 people were referred to the No Second Night Out Assessment Hub. Of these 7 achieved either a confirmed reconnection or an accommodation stay, or both.



\* These events are excluded from the total. Referral to hostel is a speculative referral to a hostel, confirmation of which leads to a booking in action being recorded.

## Temporary Accommodation: hostels, assessment centres, rolling shelters and second stage

### 7) Arrivals

Temporary accommodation arrivals by accommodation project and source of referral.

10 people arrived at accommodation in City of London this year. These 10 people had 10 arrival actions.

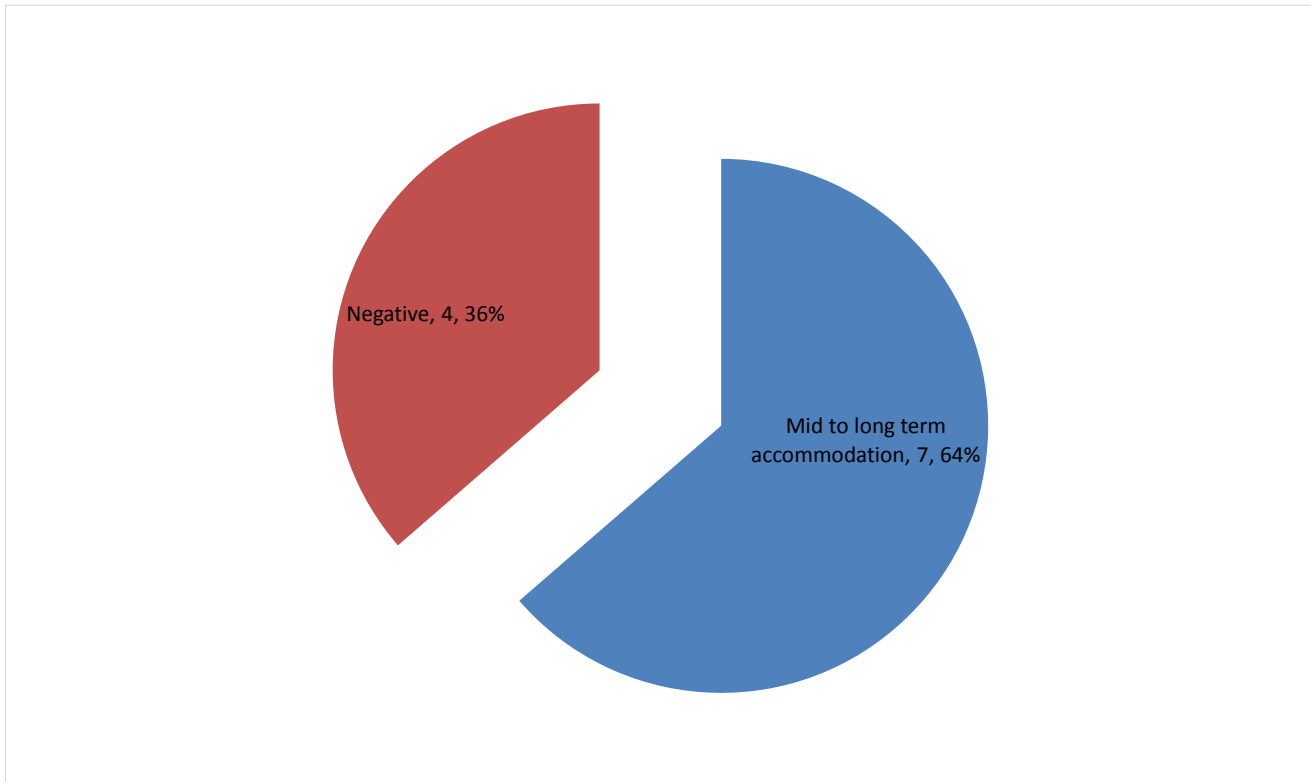
The numbers of people arriving and arrivals are higher than the previous two periods (Jul-Sep: 13, Oct-Dec: 5, Jan-Mar: 5)

#### Breakdown by accommodation:

Source of referral → Accommodation ↓	BBS - Passage	City Rough Sleepers Team	K & C SIT	Total
Providence Row - Middle Street		4		4
St Mungo's - The Lodge	2	3	1	6
<b>Total</b>	<b>2</b>	<b>7</b>	<b>1</b>	<b>10</b>

## 8) Departures - destination on departure

Departure actions by destination on departure



Base: 11

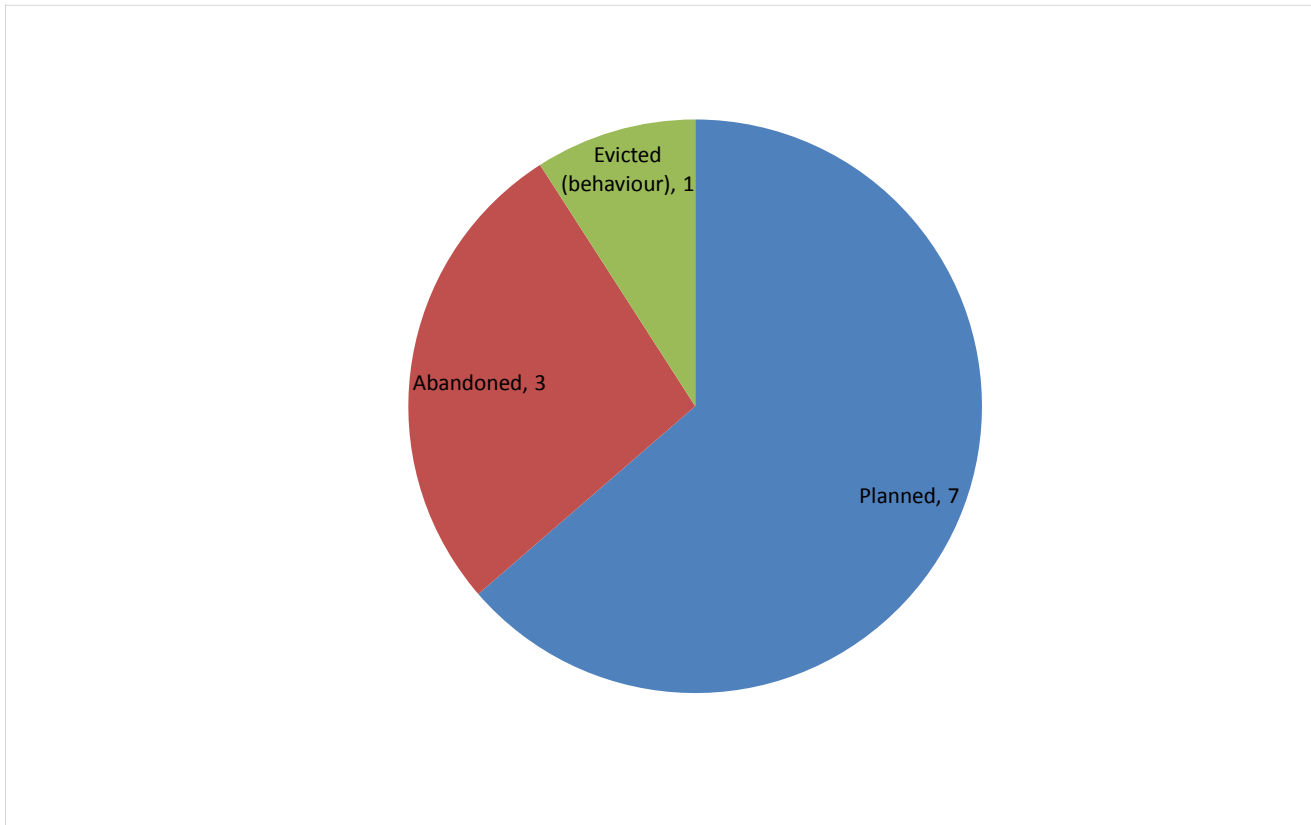
Destination categories on CHAIN	Chart category	Colour
Care home, Clearing House/RSI, Home area, Hospital - long term, LA tenancy (general needs), Long-term accommodation, Previous home, Private rented sector - independent, Private rented sector - supported, RSL tenancy (general needs), Sheltered Housing, Supported Housing	Mid to long term accommodation	Green
Bed & Breakfast, Detox clinic, Hostel, Hostel - another organisation, Hostel - within the organisation, Rehab clinic, Temporary accommodation, Psychiatric hospital, Hospital - NOT long term/acute care	Transfer	Red
Not known, Sleeping rough/returned to streets, Taken into custody	Negative	Purple
Died, Outside London, Staying with family, Staying with friends	Other	Blue

Destination on departure from temporary accommodation	Number	%
LA tenancy (general needs)	4	36%
Not known	2	18%
RSL tenancy (general needs)	1	9%
Sheltered Housing	1	9%
Sleeping rough/Returned to streets	1	9%
Supported Housing	1	9%
Taken into custody	1	9%
<b>Total</b>	<b>11</b>	<b>100%</b>



## 9) Departures - reason for leaving

Departures by whether or not the departure was planned or unplanned



Base: 11

11 people departed from accommodation in City of London this year. These 11 people had 11 departure actions.

As with arrivals, the number of people departing and departures is slightly higher than previous quarters.

64% of departures were due to a planned move. This is similar to previous quarters.

27% of departures were due to abandonments. This compares to 57% last quarter.

9% of departures were due to evictions. This is similar to last quarter.

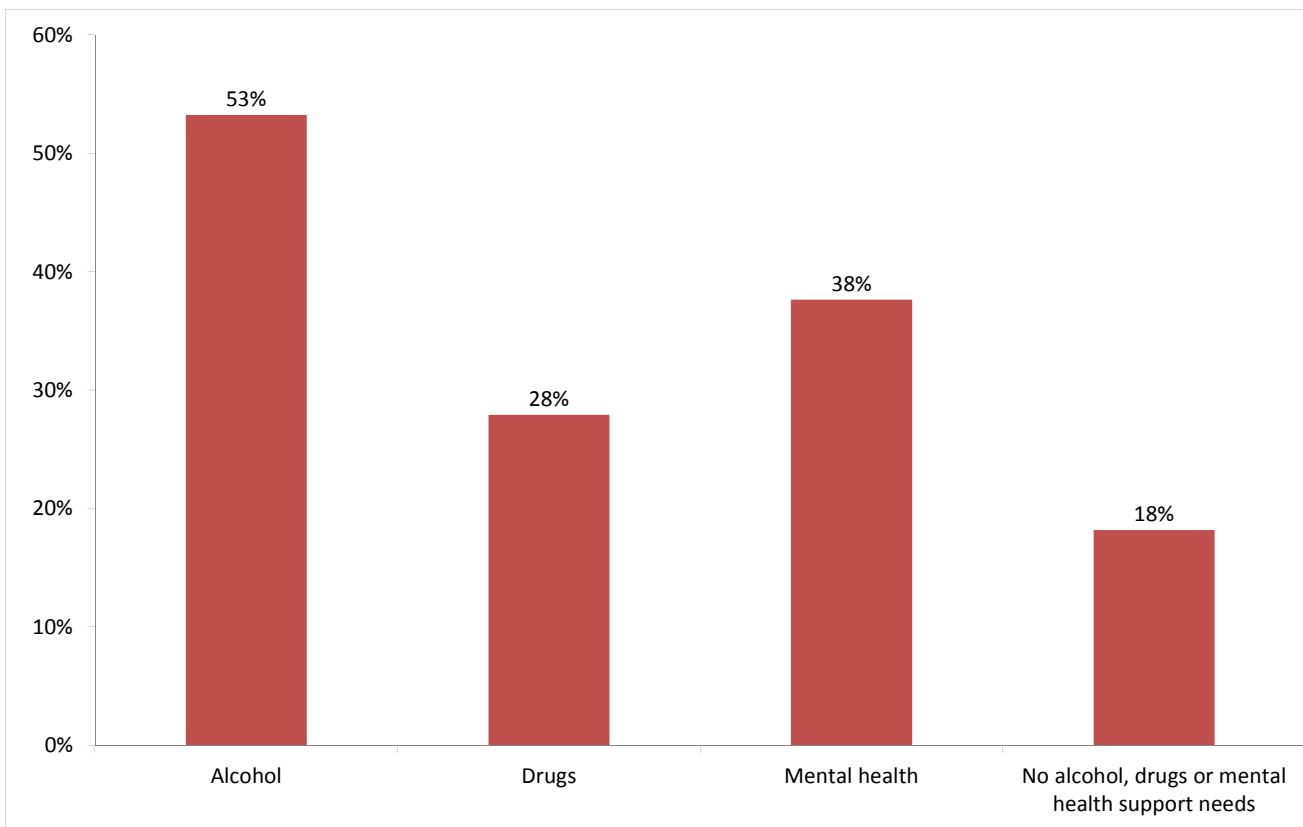
### Breakdown by accommodation

Planned/Unplanned →				Total
	Planned	Abandoned	Evicted (behaviour)	
Accommodation ↓				
Providence Row - Middle Street	2	1	1	4
St Mungo's - The Lodge	5	2		7
<b>Total</b>	<b>7</b>	<b>3</b>	<b>1</b>	<b>11</b>

## Client Support Needs/Institutional History

### 10) Support needs

People contacted by outreach or BBS teams and/or arriving in accommodation in the quarter by support needs



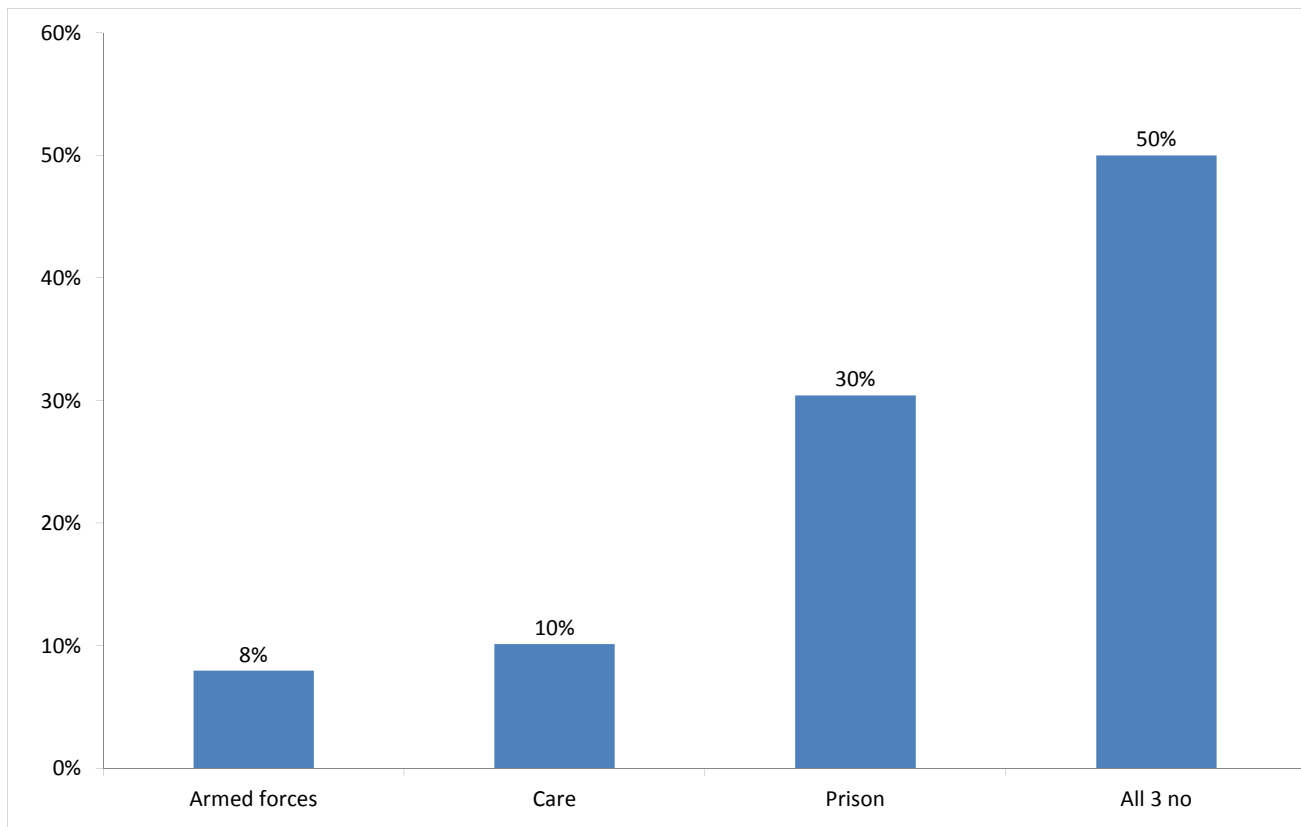
Base: 154 Note that the base figure for this graph excludes clients where all 3 support needs are not known or not recorded (37).

Support Needs	No. of people	%
Alcohol only	34	18%
Drugs only	12	6%
Mental health only	21	11%
Alcohol and drugs	18	9%
Alcohol and mental health	24	13%
Drugs and mental health	7	4%
Alcohol, drugs and mental health	6	3%
All 3 no	28	15%
All 3 not known or not assessed	37	19%
All 3 no, not known or not assessed	4	2%
<b>Total</b>	<b>191</b>	<b>100%</b>

The proportion of people contacted in City of London with an alcohol, drugs or mental health support need is consistent with the previous two periods.

## 11) Experience of armed forces, care and prison

People contacted by outreach or BBS teams and/or arriving in accommodation in the quarter by experience of the armed forces, care or prison



Base: 138 Note that the base figure for this graph excludes clients where all 3 institutional histories are not known.

11 people contacted in City of London this quarter have previously been in the armed forces (14 last quarter).

Nationality	Number	% of people seen rough sleeping
UK	5	6%
Non-UK	6	7%
<b>Total</b>	<b>11</b>	<b>13%</b>

14 people contacted in City of London this quarter have previously been in care (7 last quarter).

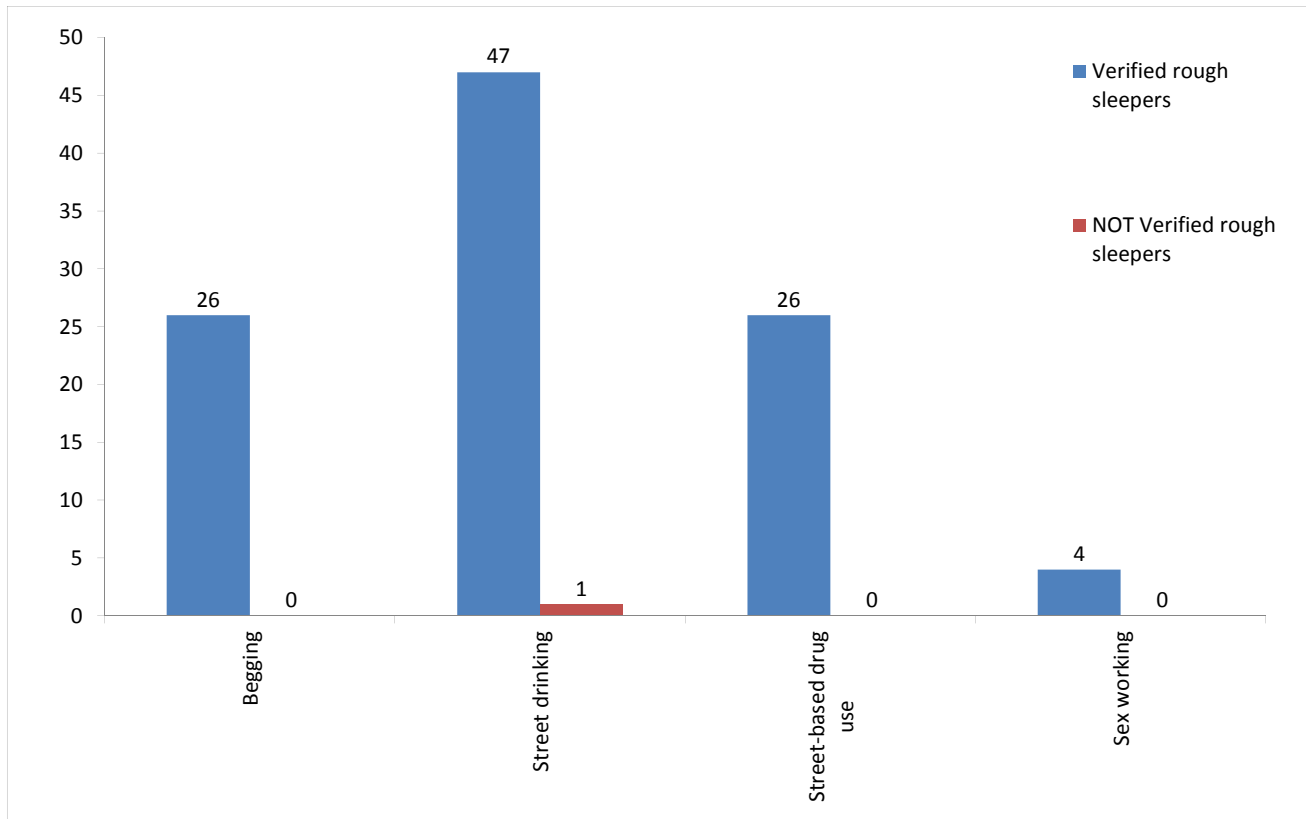
42 people contacted in City of London this quarter have previously been in prison (26 last quarter).

It is possible for someone contacted to have previous experience of more than one institution and so be included in more than one of the above figures. 6 people contacted in the year have been in care and prison.

The proportion of people contacted in City of London with previous experience of the armed forces, care or prison is consistent with previous periods in the quarter.

## 12) Street activity

Street population (people who rough sleep and/or engage in a street lifestyle) contacted by outreach who fall into one or more of the street activity categories on CHAIN



Base for verified rough sleepers: 72

Base for people not verified as rough sleepers: 2

Of the 178 verified rough sleepers contacted this quarter, 72 (40%) have been assessed as engaging in one or more street activities.

Some of these people contacted this quarter have been seen engaging in more than one type of street activity at some point.

In addition to the 178 verified rough sleepers contacted in the quarter by outreach or BBS teams, 9 people who are considered vulnerable but have not been seen rough sleeping were also contacted. Of these:

5 had confirmed reconnections;

1 was booked into accommodation in City of London.