



CHAIN

Quarterly Report for Kensington & Chelsea April-June 2010



CHAIN Quarterly report for Kensington and Chelsea 1st April to 30th June 2010

Contents

Outreach Work

1) Rough sleeping

People seen by outreach or building based (BBS) teams in the quarter - rough sleeping or contacted either on the streets or in services

2) Rough sleeping volume

People seen rough sleeping by number of bedded down contacts during the quarter

3) Nationality of rough sleepers

People seen rough sleeping by outreach or BBS teams during the quarter by flow, stock and returner model.

4) People contacted by month

People seen rough sleeping by outreach or building based (BBS) teams by month

5) No booking into accommodation events

People contacted in the quarter with no accommodation events (booking or referrals) by any outreach or BBS team, by total number of street contacts recorded on CHAIN

6) Booking into accommodation and reconnection events

Outreach accommodation (bookings and referrals) and reconnection events achieved in the quarter by type of accommodation

7) Booking into accommodation (rolling)

People who have been contacted by outreach or building based (BBS) teams who have been booked into accommodation compared to those with no booking or reconnection event.

Wider street population

8) Street activity

Street population (people who rough sleep and/or engage in a street lifestyle) contacted by outreach who fall into one or more of the street activity categories on CHAIN

Hostels, assessment centres, rolling shelters and second stage accommodation

9) Arrivals

There were no arrivals recorded on CHAIN at temporary accommodation in Kensington and Chelsea this quarter,

10) Departures - reason for leaving

Departures by whether or not the departure was planned or unplanned

11) Departures - destination on departure

Departure actions by destination on departure

Support needs, experience of prison, armed forces and care, and wider street population

12) Support needs

People contacted by outreach or BBS teams and/or arriving in accommodation in the quarter by support needs

13) Experience of prison, armed forces and care

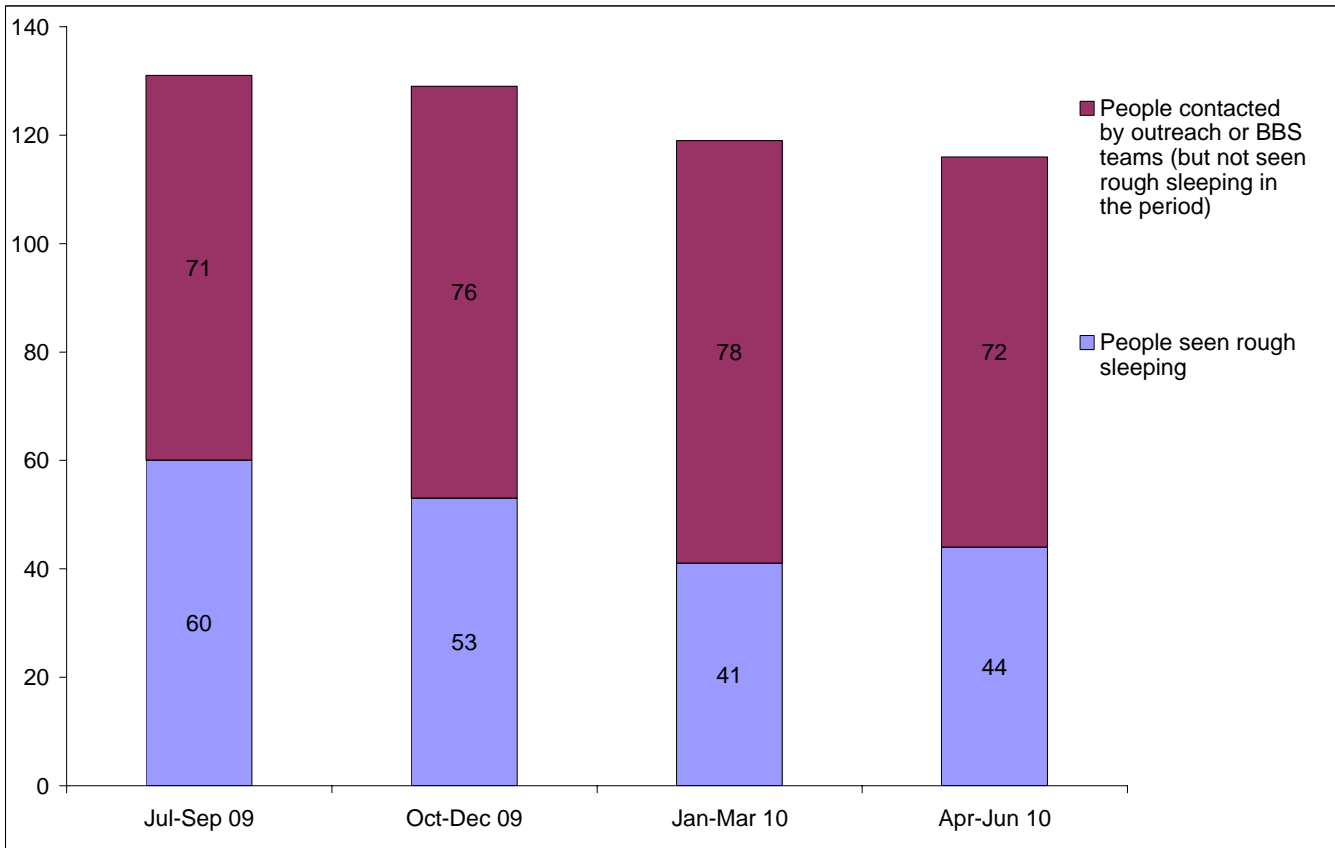
People contacted by outreach or BBS teams and/or arriving in accommodation in the quarter by experience of the armed forces, care or prison

CHAIN Quarterly report for Kensington and Chelsea

Outreach Work

1) Rough sleeping

People seen by outreach or building based (BBS) teams in the quarter - rough sleeping or contacted either on the streets or in services



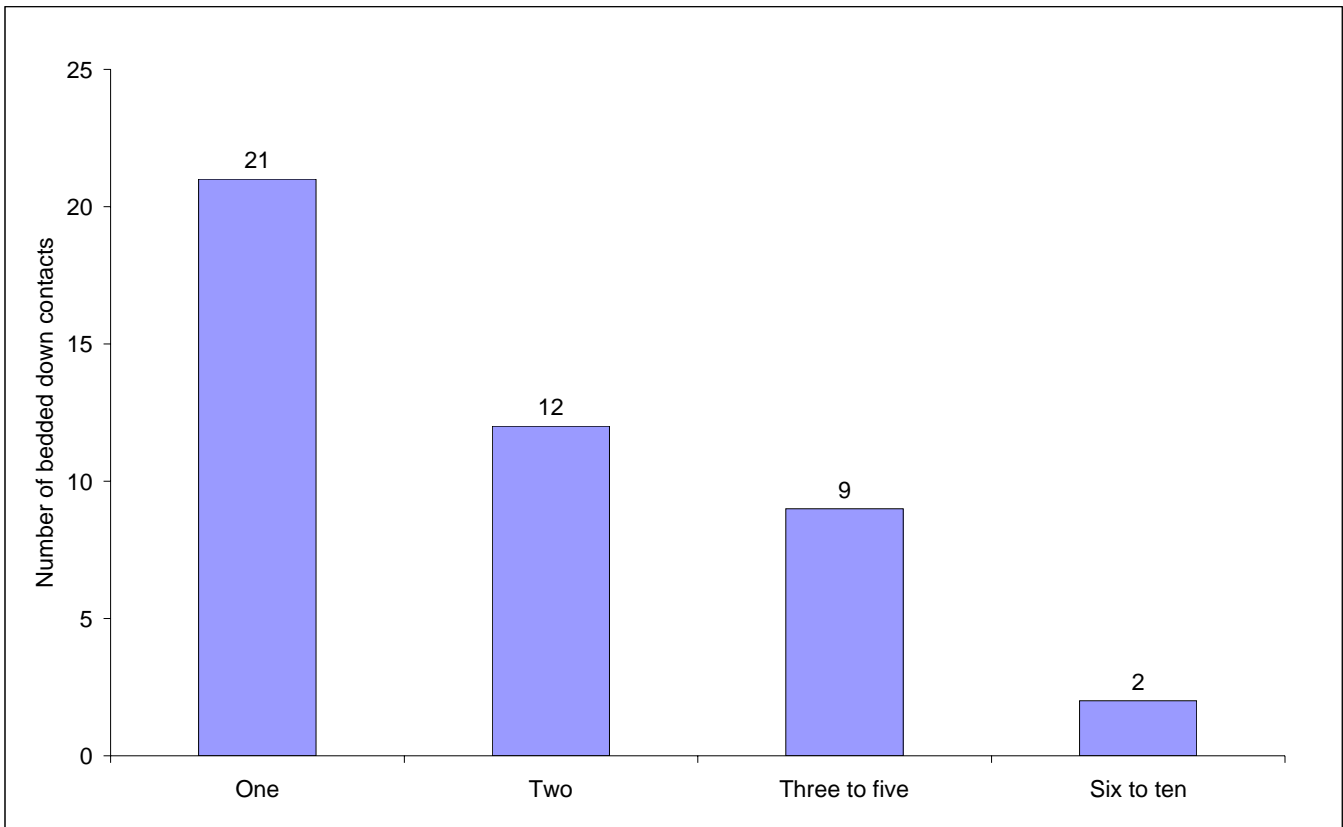
Jul-Sep 09 base: 131
Oct-Dec 09 base: 129
Jan-Mar 10 base: 119
Apr-Jun 10 base: 116

116 verified rough sleepers were contacted by services in Kensington and Chelsea during the quarter. This is a slight decrease from 119 last quarter and compares to 126 in the same quarter last year.

Of these 116, 44 had a bedded down street contact in the quarter and so were known to have slept rough in Kensington and Chelsea during the quarter. The number sleeping rough this quarter has increased by 3.

2) Rough sleeping volume

People seen rough sleeping by number of bedded down contacts during the quarter



Base: 44

Of the 44 people seen rough sleeping this quarter, 21 only had a single bedded down street contact.

Of the 44 people seen bedded down, 3 were from CEE countries and only seen once during the quarter.

NB CEE nationals often cannot be offered the same service as other people due to benefit restrictions.

3) Nationality of rough sleepers

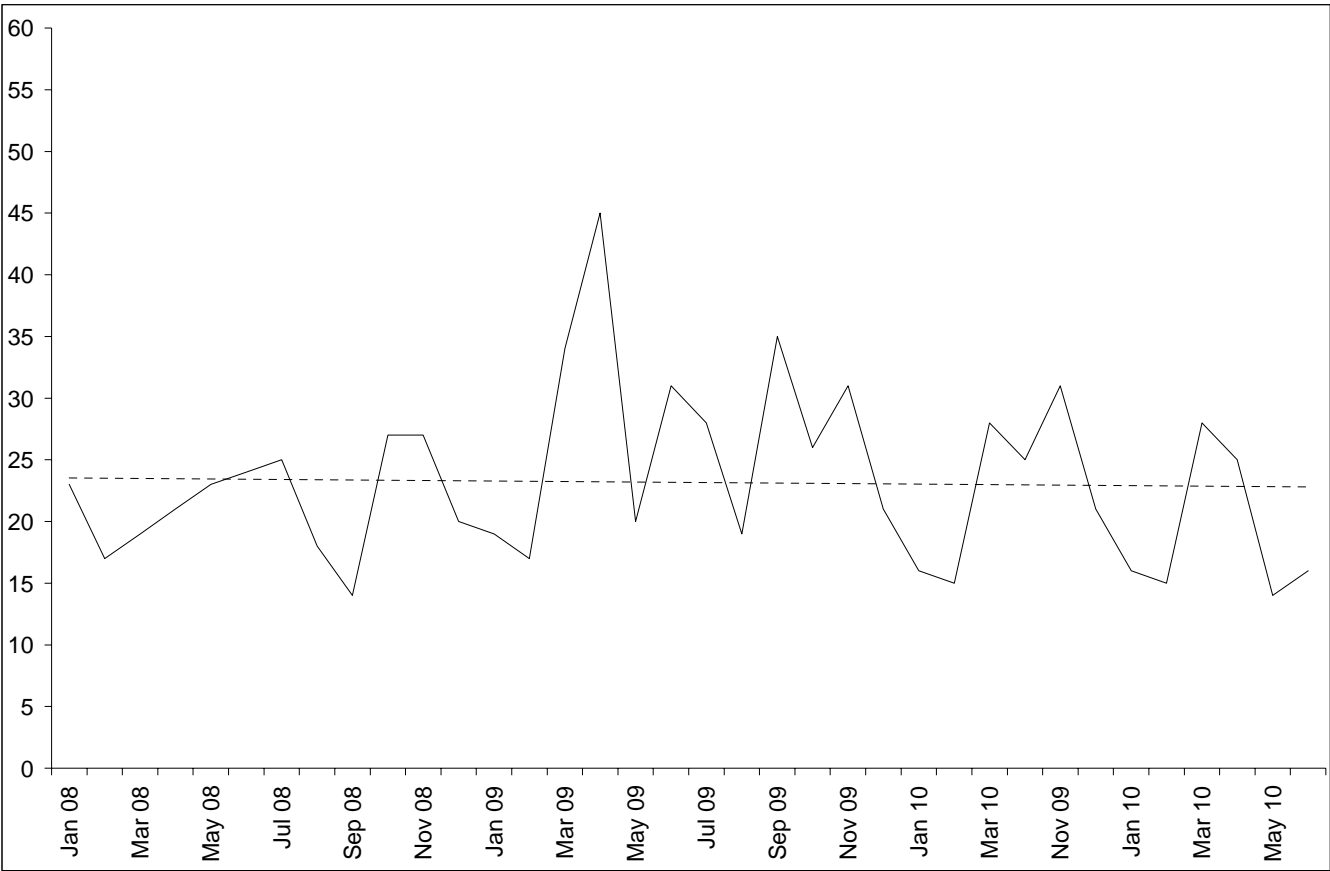
People seen rough sleeping by outreach or BBS teams during the quarter

Nationality	This 1/4	%	Last 1/4	%
UK	19	46%	15	39%
France	2	5%	0	0%
Bulgaria	0	0%	0	0%
Czech Republic	3	7%	4	11%
Estonia	0	0%	0	0%
Hungary	0	0%	0	0%
Latvia	2	5%	1	3%
Lithuania	0	0%	0	0%
Poland	11	27%	9	24%
Romania	0	0%	1	3%
Slovenia	0	0%	0	0%
Slovakia	1	2%	1	3%
Central and East European (CEE) sub-total	17	41%	16	42%
other Europe	1	2%	1	3%
Africa	0	0%	3	8%
America	0	0%	1	3%
Asia	1	2%	2	5%
Australasia	1	2%	0	0%
<i>Missing</i>	2		1	
<i>Not known</i>	1		2	
Total	44		41	
Total**	41	100%	38	100%

**This total excludes those people seen rough sleeping where their nationality is not known

4) People contacted by month

People seen rough sleeping by outreach or building based (BBS) teams by month

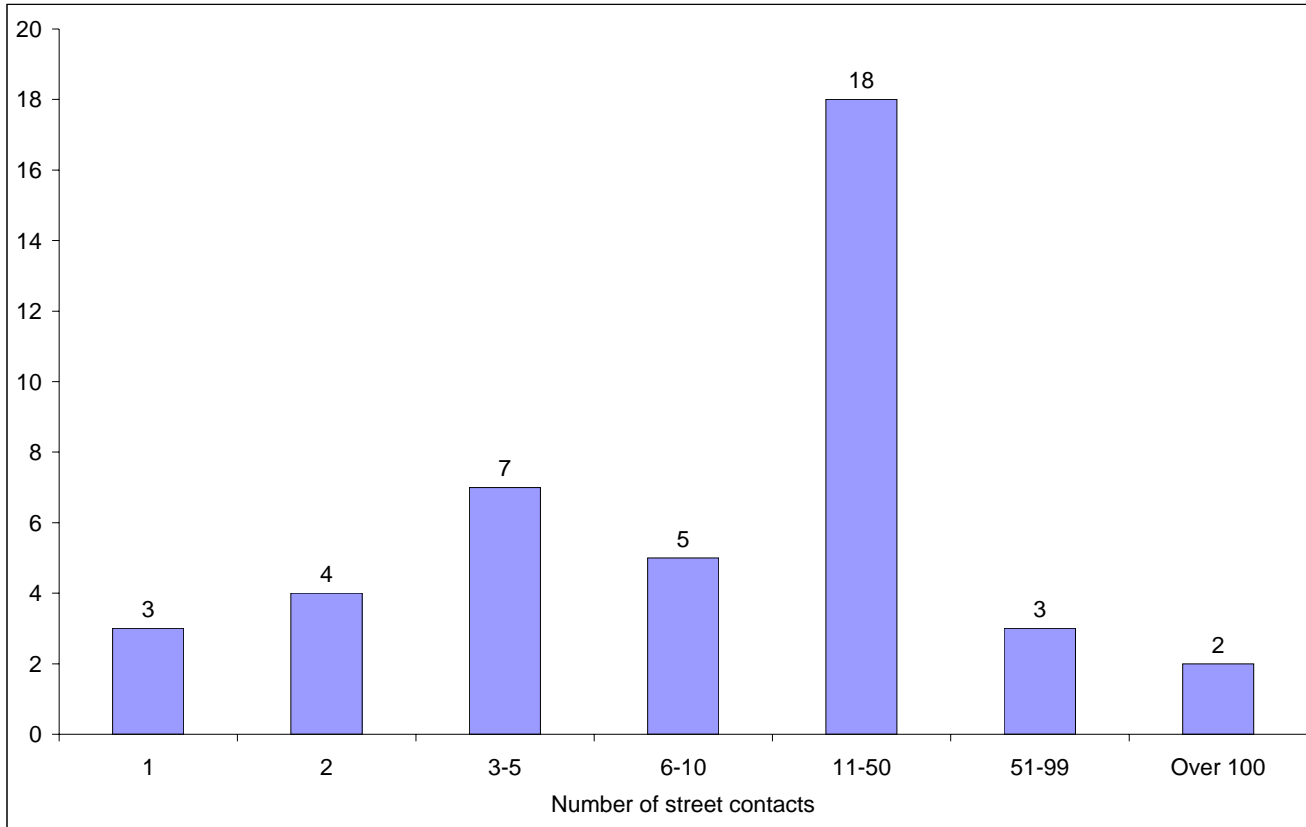


Base for people seen rough sleeping: 44

The black line shows the total number of people seen rough sleeping.

5) No booking into accommodation events

People contacted in the quarter with no accommodation events (booking or referrals) by any outreach or BBS team, by total number of street contacts recorded on CHAIN



Base: 42

42 (36%) verified rough sleepers contacted across Kensington and Chelsea this quarter have never had a booking in action recorded on CHAIN. This compares to 41 (34%) in the previous quarter.

23 of these people have slept rough in the quarter, which is 52% of all people sleeping rough this quarter.

3 (7%) of the people who have never had a booking in action recorded on CHAIN have only ever had one street contact recorded.

2 people in Kensington and Chelsea have never had a booking in action despite having over a hundred street contacts. This compares to 3 people last quarter.

6) Booking into accommodation and reconnection events

Outreach accommodation (bookings and referrals) and reconnection events achieved in the quarter by type of accommodation

Accommodation type	No. of events	%
Assessment centre	0	0%
Bed & breakfast	0	0%
Clinic/Detox/Rehab	0	0%
Night Centre	0	0%
Rolling shelter	2	18%
<i>Referrals only (no booking in)</i>	1	
Hostel	3	27%
<i>Referral rejected (no booking in)</i>	1	
Other temporary	0	0%
Second-stage accommodation	0	0%
St Mungo's complex needs	0	0%
St Mungo's semi-independent	0	0%
Clearing House/RSI	0	0%
LA tenancy (general needs)	0	0%
Private rented sector	0	0%
Private rented sector - independent	0	0%
Private rented sector - with some floating support/support	1	9%
RSL tenancy (general needs)	0	0%
Sheltered housing	0	0%
Supported housing	0	0%
Other long-term accommodation	2	18%
Bookings into accommodation total	8	73%
Return to home area	2	18%
Seeking work	0	0%
Move to area for friends/family	0	0%
Move to area with appropriate services	1	9%
Reconnections total	3	27%
TOTAL	11	100%

Outreach teams across Kensington and Chelsea succeeded in reconnecting or booking into accommodation 3 people, 3% of the 116 people contacted during the quarter.

This is a lower proportion than the previous period - 12%.

2 people had a total of 8 booking in events. This indicates that individuals can be booked into accommodation (the same type or different) more than once in the quarter.

3 people were booked into long-term accommodation. This is slightly higher than last period (1 person).

3 people were booked into hostel accommodation. This compares to 7 people last quarter.

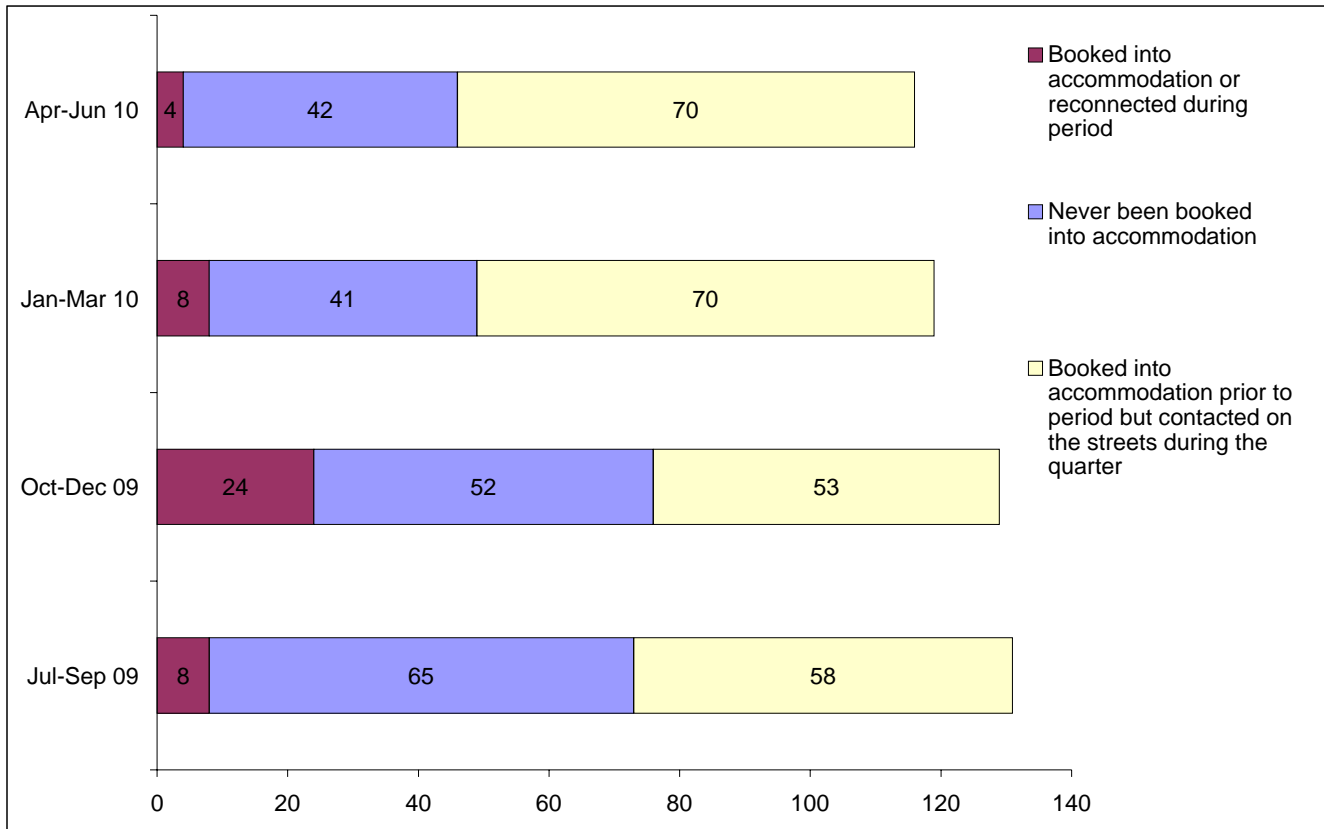
Outreach teams across Kensington and Chelsea achieved a confirmed reconnection with 1 person they contacted this quarter. This is 1% of the people contacted by outreach or BBS teams this quarter.

3 confirmed reconnection events were recorded by outreach and BBS teams for verified rough sleepers this quarter.

* These events are excluded from the total. Referral to hostel is a speculative referral to a hostel, confirmation of which leads to a booking in action being recorded.

7) Booking into accommodation (rolling)

People who have been contacted by outreach or building based (BBS) teams who have been booked into accommodation compared to those with no booking or reconnection event.

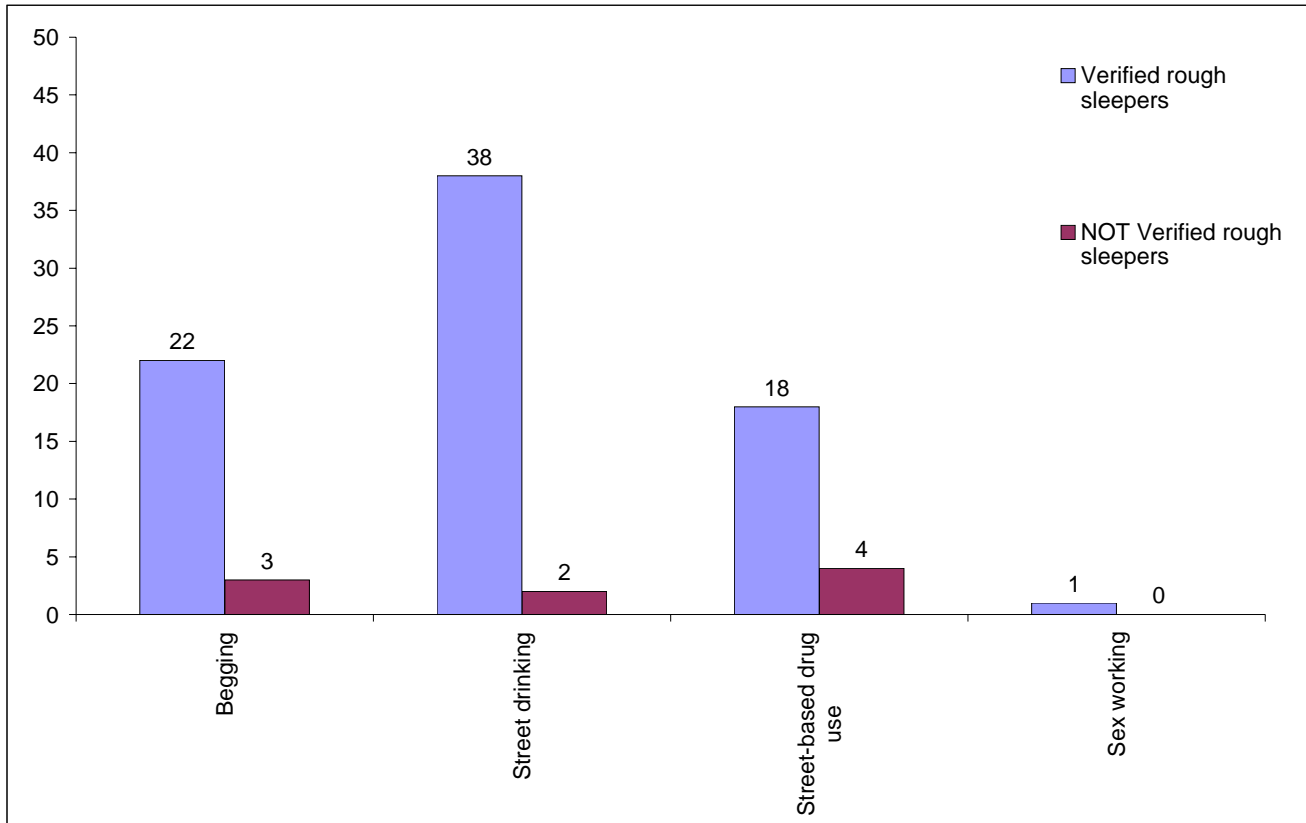


Jul-Sep 09 base: 131
 Oct-Dec 09 base: 129
 Jan-Mar 10 base: 119
 Apr-Jun 10 base: 116

The proportion of people with a street contact but who have never been booked into accommodation increased slightly this quarter (36%), having consistently decreased in previous periods (Jan-Mar:34%; Oct-Dec:40%; Jul-Sep:50%).

8) Street activity

Street population (people who rough sleep and/or engage in a street lifestyle) contacted by outreach who fall into one or more of the street activity categories on CHAIN



Base for verified rough sleepers: 48

Base for people not verified as rough sleepers: 6

Of the 116 verified rough sleepers contacted this quarter, 48 (41%) have been assessed as engaging in one or more street activities.

Some of these people contacted this quarter have been seen engaging in more than one type of street activity at some point.

In addition to the 116 verified rough sleepers contacted in the quarter by outreach or BBS teams, 6 people who are considered vulnerable but have not been seen rough sleeping were also contacted.

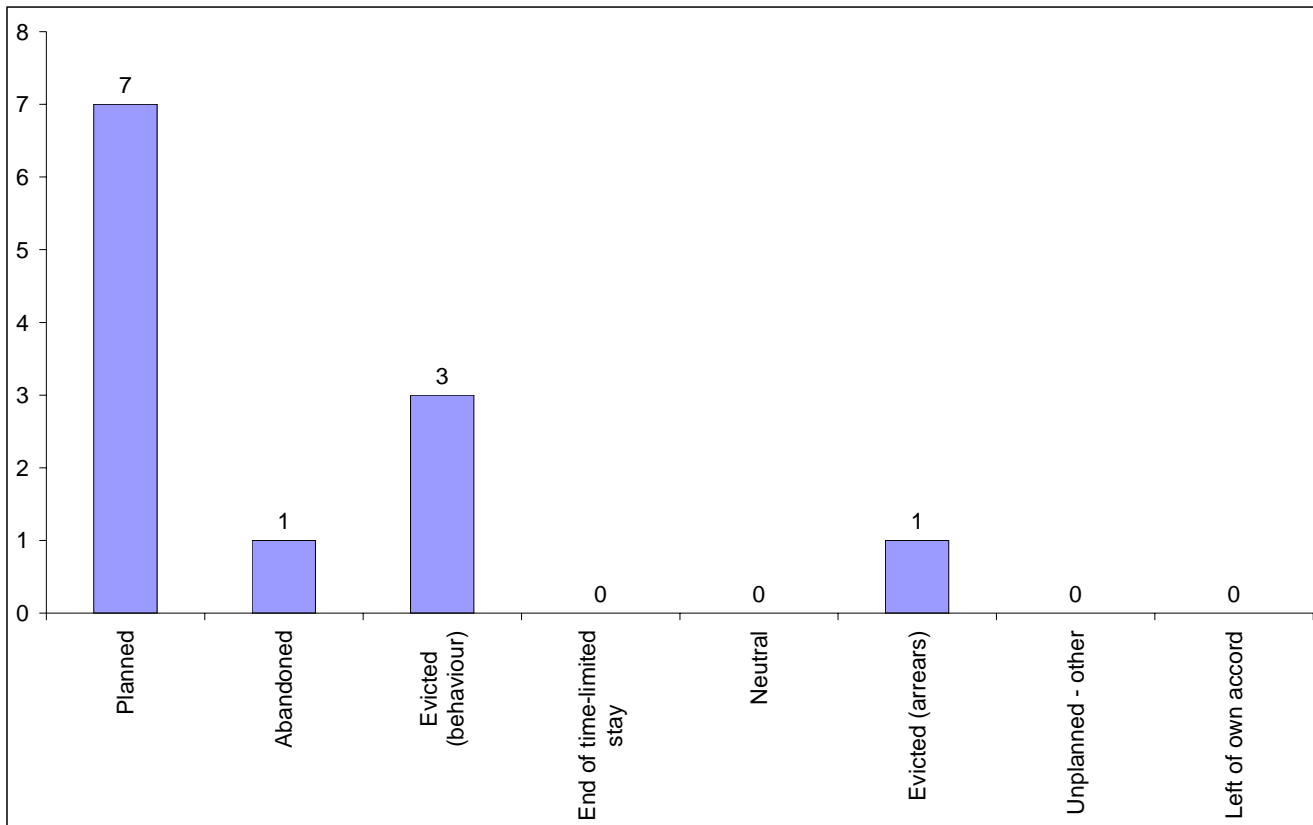
Temporary Accommodation: hostels, assessment centres, rolling shelters and second stage

9) Arrivals

There were no arrivals recorded on CHAIN at temporary accommodation in Kensington and Chelsea this quarter; there were 4 arrivals last quarter.

10) Departures - reason for leaving

Departures by whether or not the departure was planned or unplanned



Base: 12

12 people departed from accommodation in Kensington and Chelsea this year. These 12 people had 12 departure actions.

The number of people departing and departures is higher than the previous quarter (6 people had 6 departure actions).

58% of departures were due to a planned move. This is a decrease from the previous three quarters (83% Jan-Mar; 50% Oct-Dec; 75% Jul-Sep).

8% of departures were due to abandonments. This is consistent with the previous three quarters.

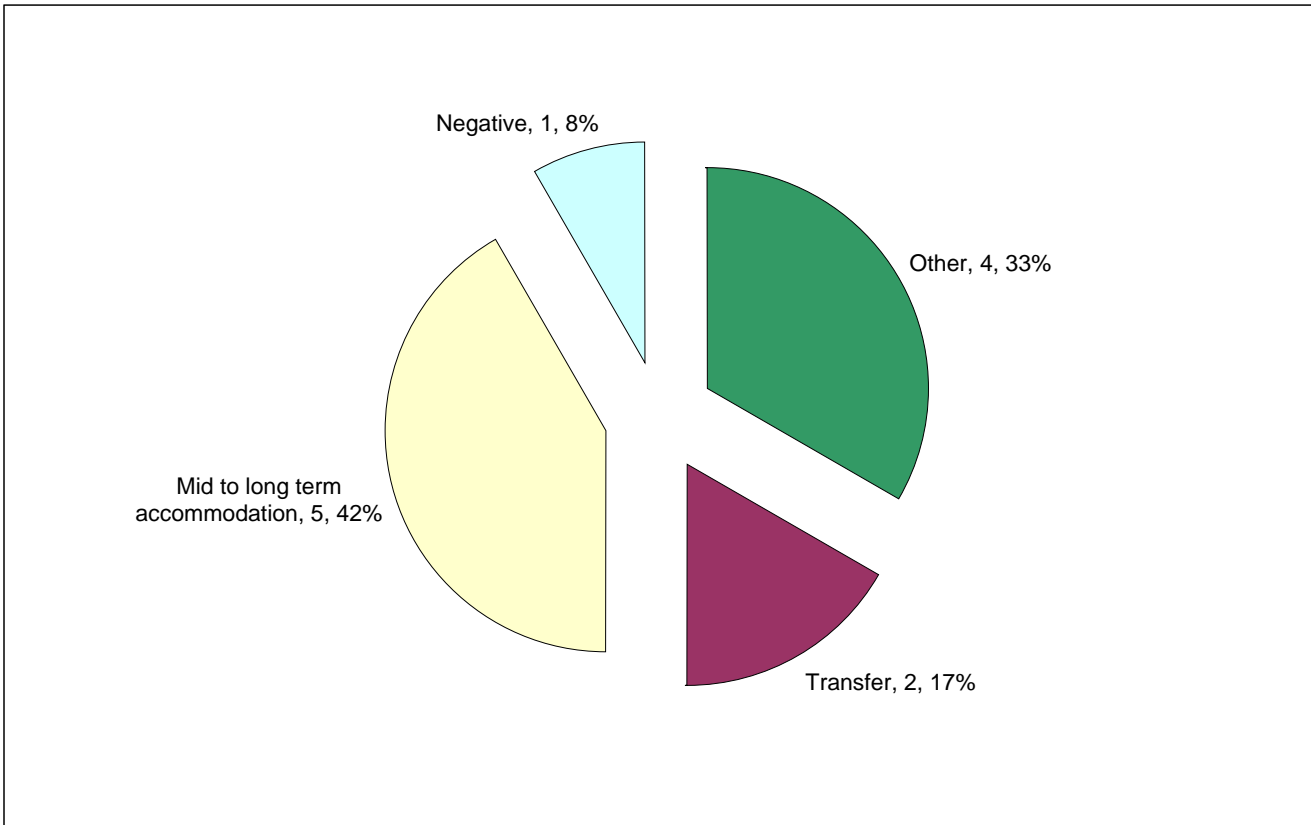
33% of departures were due to evictions. This is consistent with the previous three quarters.

Breakdown by accommodation

Planned/Unplanned Accommodation	Planned ↓	Abandoned	Evicted (behaviour)	Evicted (arrears)	Total
Look Ahead - Earl's Court	5	1	1	1	8
St Mungo's - Cromwell Road	1		2		3
St Mungo's - Lancaster Road	1				1
Total	7	1	3	1	12

11) Departures - destination on departure

Departure actions by destination on departure



Base: 12

Destination categories on CHAIN	Chart category	Colour
Move to long-term accomm, Return to home area	Mid to long term accommodation	Yellow
Clinic, Move to another hostel, Move to other temp accomm	Transfer	Maroon
Not known - abandoned, Not known - end of time limited stay, Not known - evicted, Not known - left of own accord, Prison, Return to streets	Negative	Cyan
Area outside London, Death, Hospital	Other	Green

Destination on departure from temporary accommodation	Number	%
Bed & Breakfast	0	0%
Care home	0	0%
Clearing House/RSI	4	33%
Detox clinic	0	0%
Died	0	0%
Home area	0	0%
Hospital - long term	0	0%
Hospital - NOT long term/acute care	0	0%
Hostel	0	0%
Hostel - another organisation	2	17%
Hostel - within the organisation	0	0%
LA tenancy (general needs)	0	0%
Long-term accommodation	0	0%
Not known	4	33%
Outside London	0	0%
Previous home (describe type of accomm in notes)	0	0%
Private rented sector - independent	0	0%
Private rented sector - with some floating support/support	0	0%
Psychiatric hospital	0	0%
Rehab clinic	0	0%
RSL tenancy (general needs)	1	8%
Sheltered Housing	0	0%
Sleeping rough/Returned to streets	1	8%
Staying with family	0	0%
Staying with friends	0	0%
Supported Housing	0	0%
Taken into custody	0	0%
Temporary accommodation	0	0%
Total	12	100%

17% of people left accommodation to move to another hostel. This compares to 0% last quarter.

42% left to move to long-term accommodation. This is consistent with previous periods.

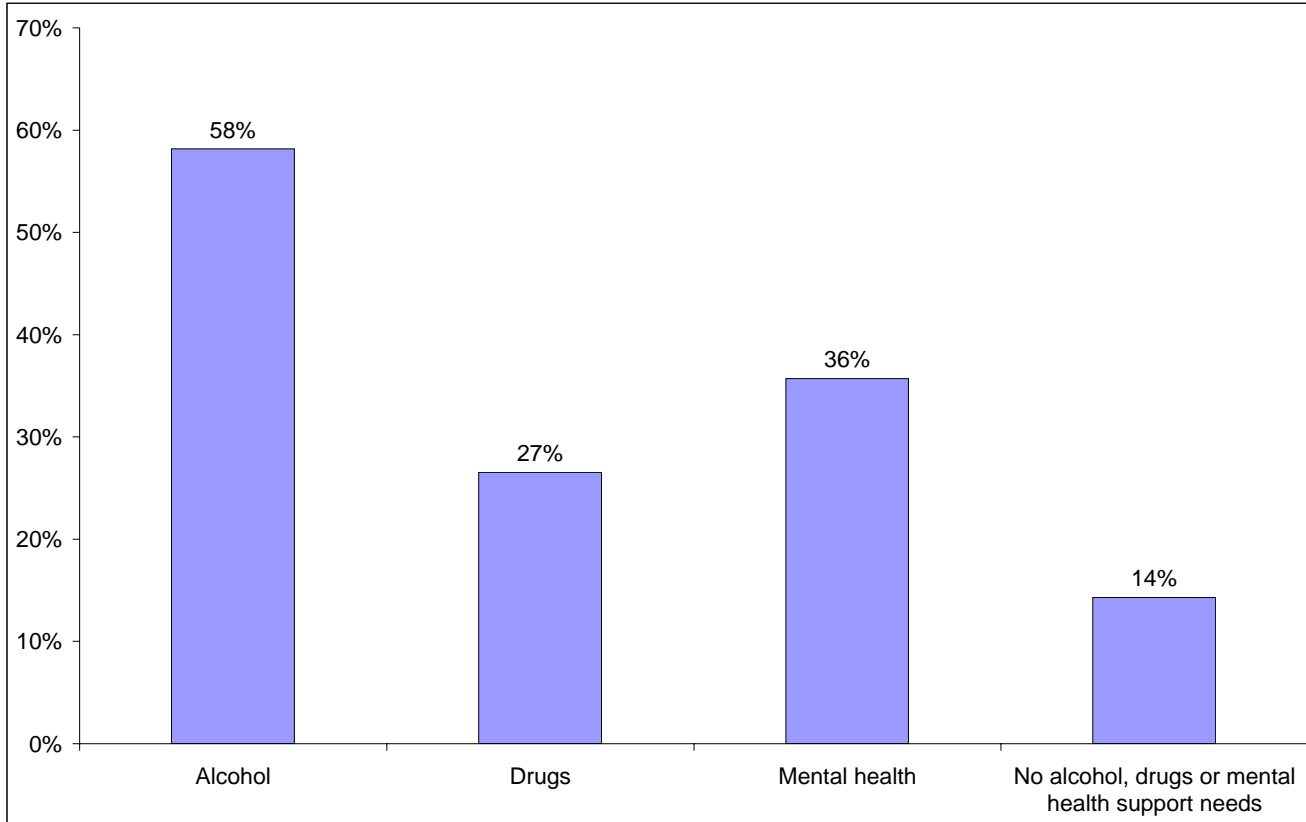
Breakdown by accommodation

Destination Accommodation	Clearing House/RSI	Hostel - another organisation	Not known	RSL tenancy (general needs)	Sleeping rough/Returned	Total
Look Ahead - Earl's Court	3	2	3			8
St Mungo's - Cromwell Road	1		1		1	3
St Mungo's - Lancaster Road				1		1
Total	4	2	4	1	1	12

Client Support Needs/Institutional History

12) Support needs

People contacted by outreach or BBS teams and/or arriving in accommodation in the quarter by support needs



Base: 98 Note that the base figure for this graph excludes clients where all 3 support needs are not known or not recorded (19).

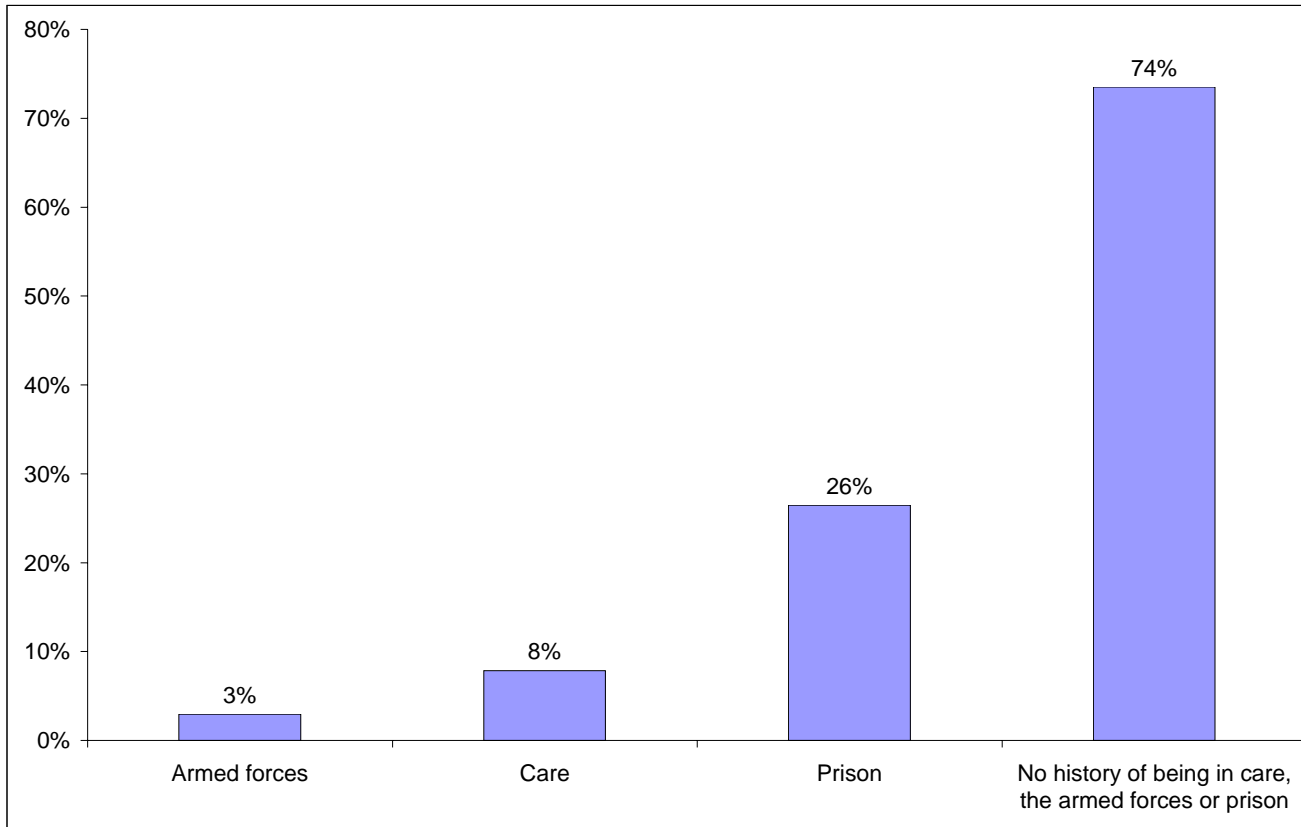
Support Needs	No. of people	%
Alcohol only	29	25%
Drugs only	5	4%
Mental health only	14	12%
Alcohol and drugs	11	9%
Alcohol and mental health	11	9%
Drugs and mental health	4	3%
Alcohol, drugs and mental health	6	5%
All 3 no	14	12%
All 3 not known or not assessed	19	16%
All 3 no, not known or not assessed	4	3%
Total	117	100%

The proportion of people contacted in Kensington and Chelsea with an alcohol, drugs or mental health support need is consistent with the previous two periods.

The proportion of people contacted in Kensington and Chelsea with an alcohol support need is the same as the proportion across all boroughs this quarter.

13) Experience of prison, armed forces and care

People contacted by outreach or BBS teams and/or arriving in accommodation in the quarter by experience of the armed forces, care or prison



Base: 102 Note that the base figure for this graph excludes clients where all 3 institutional histories are not known.

3 people contacted in Kensington and Chelsea this quarter have previously been in the armed forces (4 last quarter).

Nationality	Number	%
UK	2	75%
Missing	1	25%
Total	3	100%

8 people contacted in Kensington and Chelsea this quarter have previously been in care (8 last quarter).

27 people contacted in Kensington and Chelsea this quarter have previously been in prison (40 last quarter).

It is possible for someone contacted to have previous experience of more than one institution and so be included in more than one of the above figures. 4 people contacted in the year have been in care and prison.

The proportion of people contacted in Kensington and Chelsea with previous experience of the armed forces and care consistent with previous periods in the quarter.

*NB Due to changes in the recording of armed forces, prison and care data on CHAIN, the base has been adjusted to exclude clients with no history who have only been seen once in the period