



CHAIN

Quarterly Report for Kensington & Chelsea April - June 2011



CHAIN Quarterly report for Kensington and Chelsea

1st April to 30th June 2011

Contents

Outreach Work

1) Rough sleeping

People seen by outreach or building based (BBS) teams in the quarter - rough sleeping or contacted either on the streets or in services

2) Rough sleeping volume

People seen rough sleeping by number of bedded down contacts during the quarter

3) Nationality of rough sleepers

People seen rough sleeping by outreach or BBS teams during the quarter by flow, stock and returner model.

4) People contacted by month

People seen rough sleeping by outreach or building based (BBS) teams by month

5) No booking into accommodation events

People contacted in the quarter with no accommodation events (booking or referrals) by any outreach or BBS team, by total number of street contacts recorded on CHAIN

6) Booking into accommodation and reconnection events

Outreach accommodation (bookings and referrals) and reconnection events achieved in the quarter by type of accommodation

Hostels, assessment centres, rolling shelters and second stage accommodation

7) Arrivals

Temporary accommodation arrivals by accommodation project and source of referral.

8) Departures - destination on departure

Departure actions by destination on departure

9) Departures - reason for leaving

Departures by whether or not the departure was planned or unplanned

Support needs and institutional history

10) Support needs

People contacted by outreach or BBS teams and/or arriving in accommodation in the quarter by support needs

11) Experience of armed forces, care and prison

People contacted by outreach or BBS teams and/or arriving in accommodation in the quarter by experience of the armed forces, care or prison

Wider street population

12) Street activity

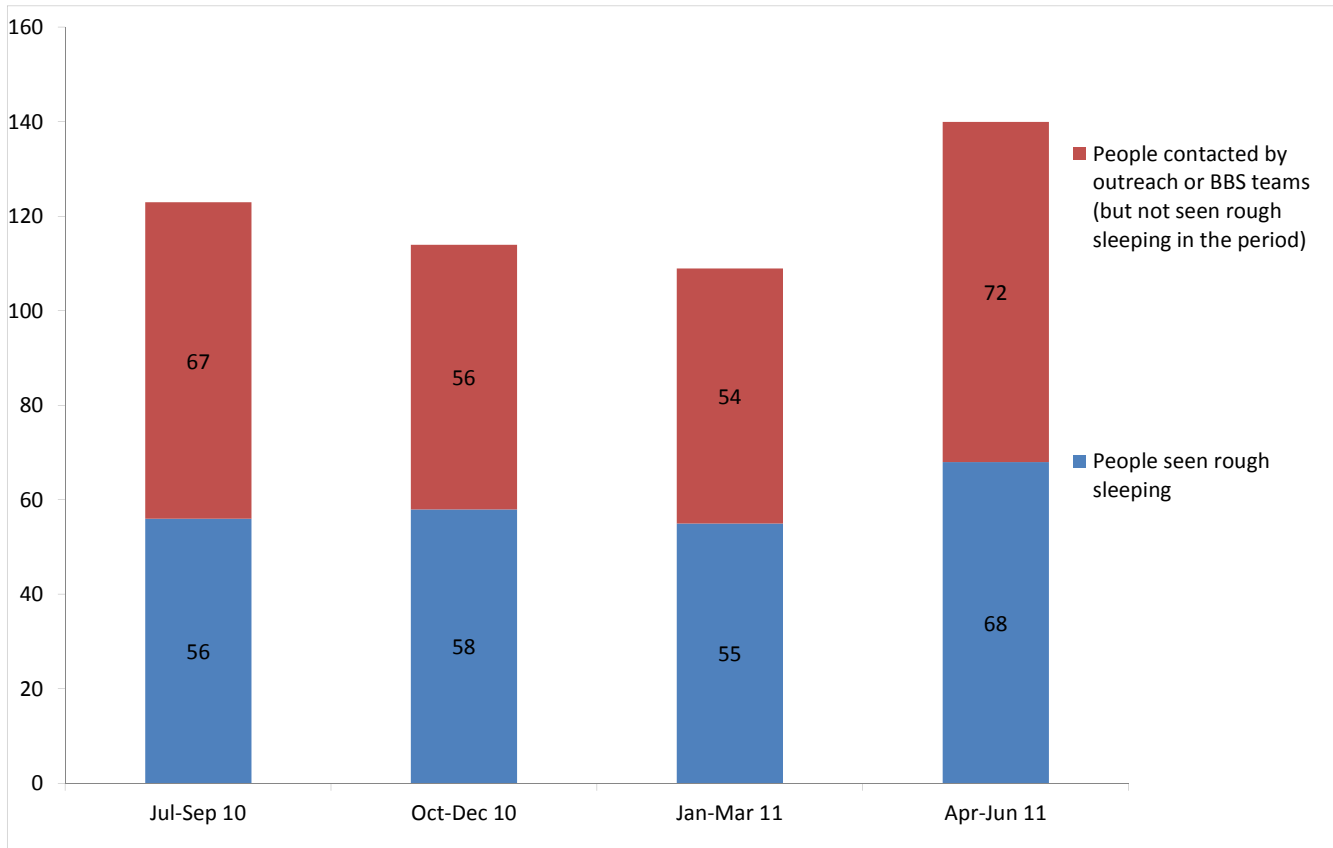
Street population (people who rough sleep and/or engage in a street lifestyle) contacted by outreach who fall into one or more of the street activity categories on CHAIN

CHAIN Quarterly report for Kensington and Chelsea

Outreach Work

1) Rough sleeping

People seen by outreach or building based (BBS) teams in the quarter - rough sleeping or contacted either on the streets or in services



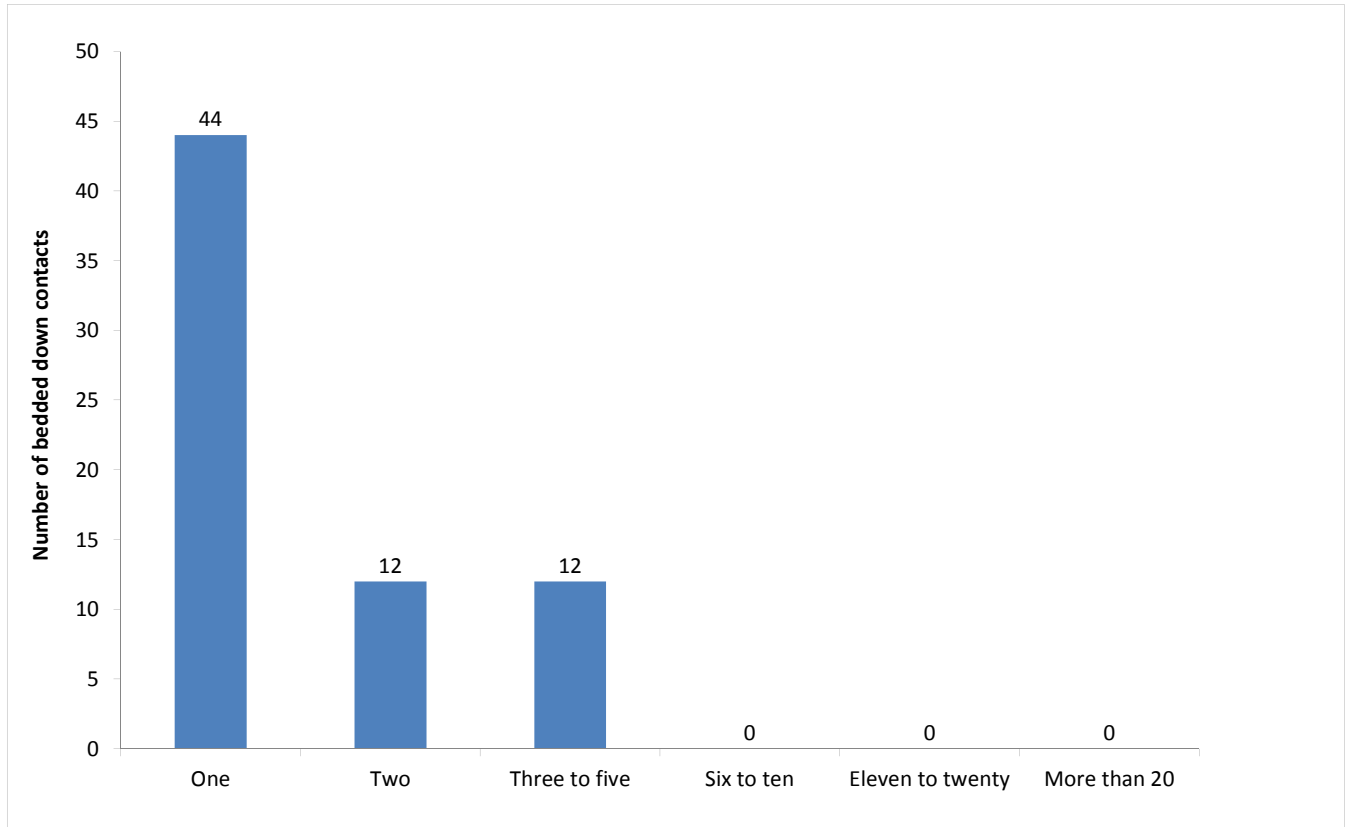
Jul - Sep 10 base: 123
Oct - Dec 10 base: 114
Jan - Mar 11 base: 109
Apr - Jun 11 base: 140

140 verified rough sleepers were contacted by services in Kensington and Chelsea during the quarter. This is an increase from 109 last quarter and compares to 116 in the same quarter last year.

Of these 140, 68 had a bedded down street contact in the quarter and so were known to have slept rough in Kensington and Chelsea during the quarter. The number sleeping rough this quarter has increased by 24%.

2) Rough sleeping volume

People seen rough sleeping by number of bedded down contacts during the quarter



Base: 68

15 people were seen rough sleeping for the first time this quarter (flow).

Of the 68 people seen rough sleeping this quarter, 44 only had a single bedded down street contact.

Of the 68 people seen bedded down, 4 were from CEE countries and seen only once during the period.

NB CEE nationals often cannot be offered the same service as other people due to benefit restrictions.

3) Nationality of rough sleepers

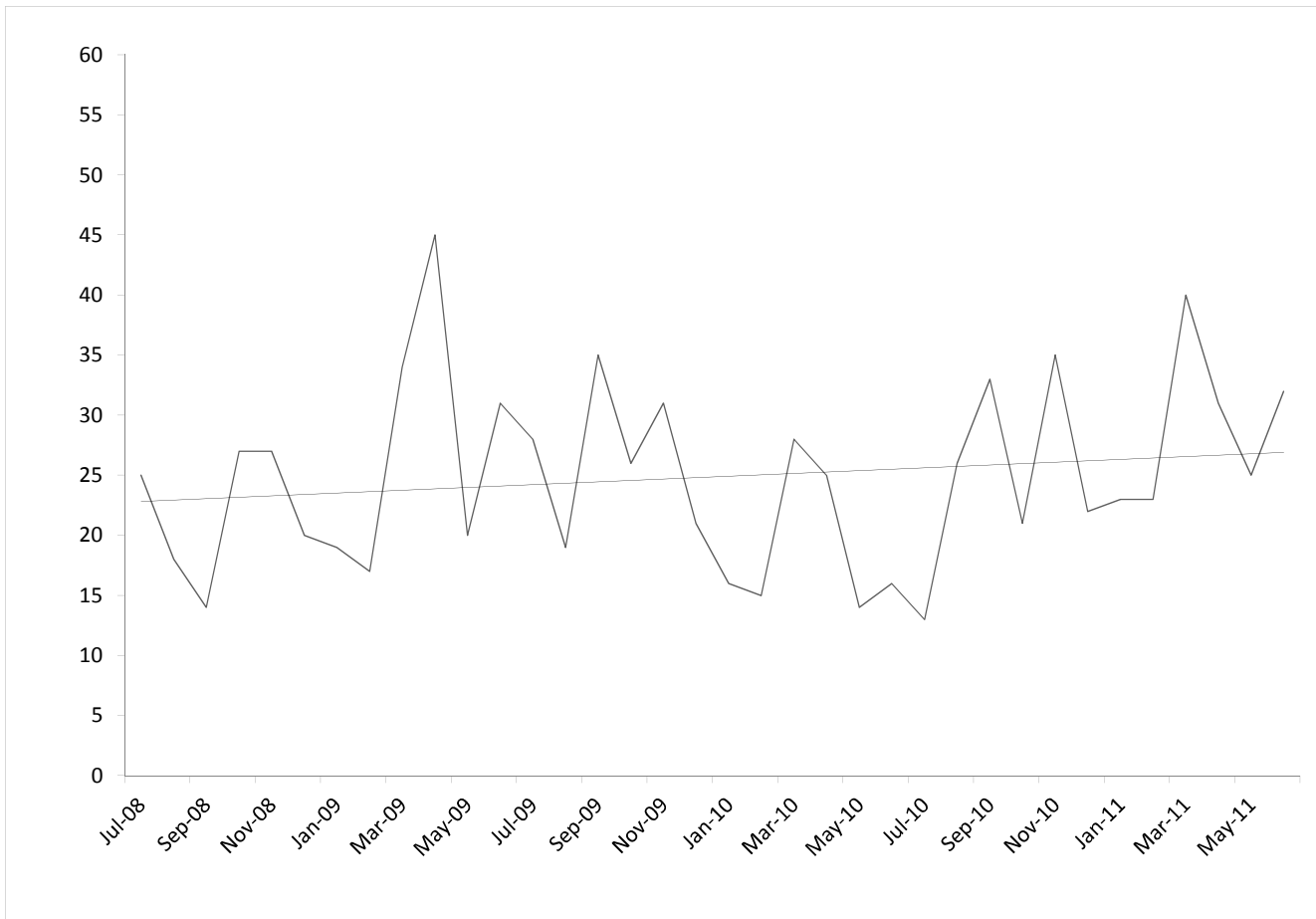
People seen rough sleeping by outreach or BBS teams during the quarter by flow, stock and returner model.

Nationality	Jul-Sept	%	Oct-Dec	%	Jan-Mar	%	Jan-Mar	%
UK	29	59%	28	49%	19	36%	27	42%
Bulgaria							1	
Czech Republic	1	2%	2	4%		0%	1	2%
Estonia			1		2			
Hungary							1	
Latvia	1	2%	2	4%	4	8%	7	11%
Lithuania	1	2%		0%		0%		0%
Poland	5	10%	6	11%	10	19%	7	11%
Romania	3	6%	2	4%	1	2%	1	2%
Slovenia								
Slovakia	1	2%		0%	2	4%	2	3%
Central and East European	12	24%	13	23%	19	36%	20	31%
other Europe	3	6%	11	19%	11	21%	12	18%
Africa	2	4%	3	5%	3	6%	5	8%
America		0%		0%		0%	0	0%
Asia	3	6%	1	2%	1	2%	0	0%
Australasia		0%	1	2%		0%	1	2%
Missing	5				1		2	
Not known	2		1		1		1	
Total	56		58		55		68	
Total**	49	100%	57	100%	53	100%	65	100%

**This total excludes those people seen rough sleeping where their nationality is not known

4) People contacted by month

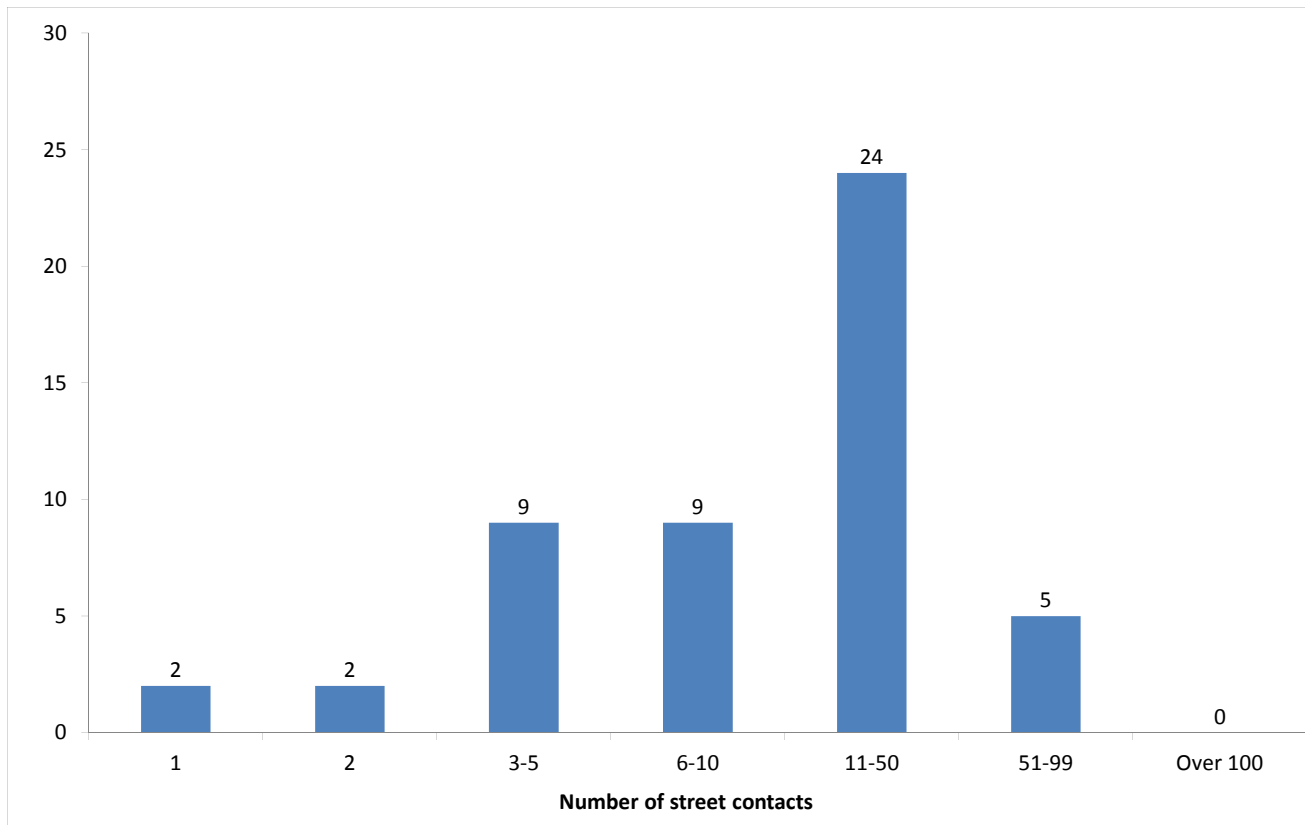
People seen rough sleeping by outreach or building based (BBS) teams by month



The black line shows the total number of people seen rough sleeping.

5) No booking into accommodation events

People contacted in the quarter with no accommodation events (booking or referrals) by any outreach or BBS team, by total number of street contacts recorded on CHAIN



Base: 51

51 (36%) verified rough sleepers contacted across Kensington and Chelsea this quarter have never had a booking in action recorded on CHAIN. This has increased slightly from 46 (42%) in the previous period.

35 of these people have slept rough in the quarter, which is 51% of all people sleeping rough this quarter.

2 (4%) of the people who have never had a booking in action recorded on CHAIN have only ever had one street contact recorded.

6) Booking into accommodation and reconnection events

Outreach accommodation (bookings and referrals) and reconnection events achieved in the quarter by type of accommodation

Accommodation type	No. of Events	%
Assessment centre	0	0%
Bed & breakfast	2	8%
Clinic/Detox/Rehab	2	8%
Night Centre	0	0%
Rolling shelter	0	0%
Hostel	13	54%
Other temporary	0	0%
Second-stage accommodation	2	8%
St Mungo's complex needs	0	0%
St Mungo's semi-independent	0	0%
Clearing House/RSI	1	4%
LA tenancy (general needs)	0	0%
Private rented sector	0	0%
Private rented sector - independent	3	13%
Private rented sector - with some floating support/support	0	0%
RSL tenancy (general needs)	0	0%
Sheltered housing	0	0%
Supported housing	0	0%
Other long-term accommodation	0	0%
Bookings into accommodation total	23	96%
Return to home area	1	4%
Seeking work	0	0%
Move to area for friends/family	0	0%
Move to area with appropriate services	1	4%
Other	0	0%
Reconnections total	1	4%
TOTAL	24	100%

Outreach and BBS teams across Kensington and Chelsea succeeded in reconnecting or booking into accommodation 21 people, 15% of the 140 people contacted during the quarter.

This is a slightly higher proportion than last quarter - Jan - Mar: 12 (11%).

20 people had a total of 23 booking in events. This indicates that individuals can be booked into accommodation (the same type or different) more than once in the quarter.

1 person moved into Clearing House accommodation in addition to 3 people who moved into flats in the private rented sector.

12 people were booked into hostel accommodation. This is higher than previous periods.

Outreach and BBS teams across Kensington and Chelsea achieved a confirmed reconnection with 1 person they contacted this quarter. This is 1% of the people contacted by outreach or BBS teams this quarter.

1 confirmed reconnection events were recorded by outreach and BBS teams for verified rough sleepers this quarter. In addition, teams recorded 2 such actions for the wider street population (people not seen sleeping rough).

In addition, 3 people were referred to the No Second Night Out Assessment Hub. Of these 2 achieved either a confirmed reconnection or an accommodation stay, or both.

* These events are excluded from the total. Referral to hostel is a speculative referral to a hostel, confirmation of which leads to a booking in action being recorded.

Temporary Accommodation: hostels, assessment centres, rolling shelters and second stage

7) Arrivals

Temporary accommodation arrivals by accommodation project and source of referral.

6 people arrived at accommodation in Kensington and Chelsea this year. These 6 people had 6 arrival actions.

The numbers of people arriving and arrivals are consistent with previous periods.

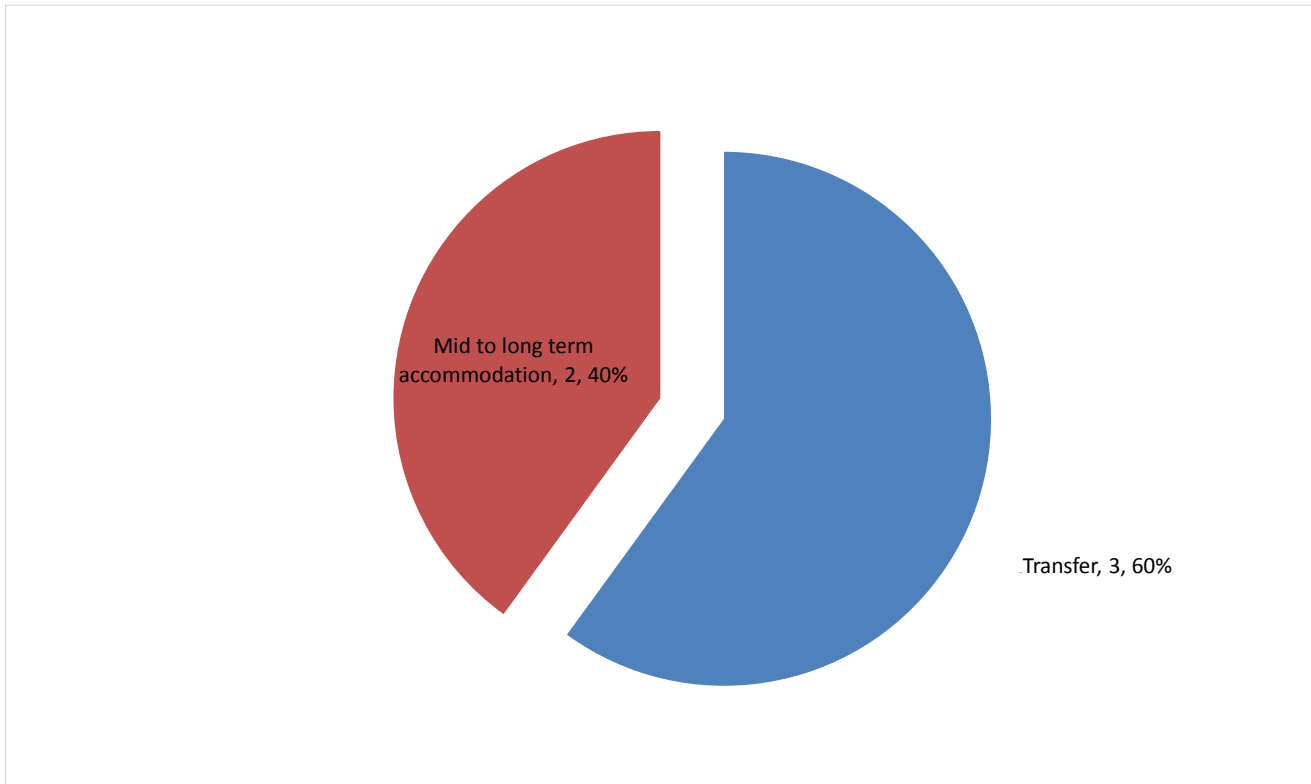
The proportion of arrivals to accommodation in Kensington and Chelsea that were referred by outreach or BBS teams and other accommodation projects is consistent with previous periods this quarter.

Breakdown by accommodation:

Source of referral →	K & C SIT	Total
Accommodation ↓		
St Mungo's - Cromwell Road	6	6
Total	6	6

8) Departures - destination on departure

Departure actions by destination on departure



Base: 5

Destination categories on CHAIN	Chart category	Colour
Care home, Clearing House/RSI, Home area, Hospital - long term, LA tenancy (general needs), Long-term accommodation, Previous home, Private rented sector - independent, Private rented sector - supported, RSL tenancy (general needs), Sheltered Housing, Supported Housing	Mid to long term accommodation	Green
Bed & Breakfast, Detox clinic, Hostel, Hostel - another organisation, Hostel - within the organisation, Rehab clinic, Temporary accommodation, Psychiatric hospital, Hospital - NOT long term/acute care	Transfer	Red
Not known, Sleeping rough/returned to streets, Taken into custody	Negative	Purple
Died, Outside London, Staying with family, Staying with friends	Other	Blue

Destination on departure from temporary accommodation	Number	%
Hostel - another organisation	2	40%
Hostel - within the organisation	1	20%
LA tenancy (general needs)	2	40%
Total	5	100%

5 people departed from accommodation in Kensington and Chelsea this year. These 5 people had 5 departure actions.

60% of people left accommodation to move to another hostel. This is an increase on the previous three periods.

40% of people left accommodation to move to mid to long-term accommodation. This is an increase on the previous three periods.

Breakdown by accommodation

Destination Accommodation	Hostel - another organisation	Hostel - within the organisation	LA tenancy (general needs)	Total
St Mungo's - Cromwell Road	2	1	1	4
St Mungo's - Redcliffe Gardens			1	1
Total	2	1	2	5

9) Departures - reason for leaving



Departures by whether or not the departure was planned or unplanned

5 people departed from accommodation in Kensington and Chelsea this year. These 5 people had 5 departure actions.

As with arrivals, the number of people departing and departures is consistent with previous quarters.

100% of departures were due to a planned move. This is higher than previous quarters (Jul-Sep: 50%, Oct-Dec:71%, Jan-Mar: 47%).

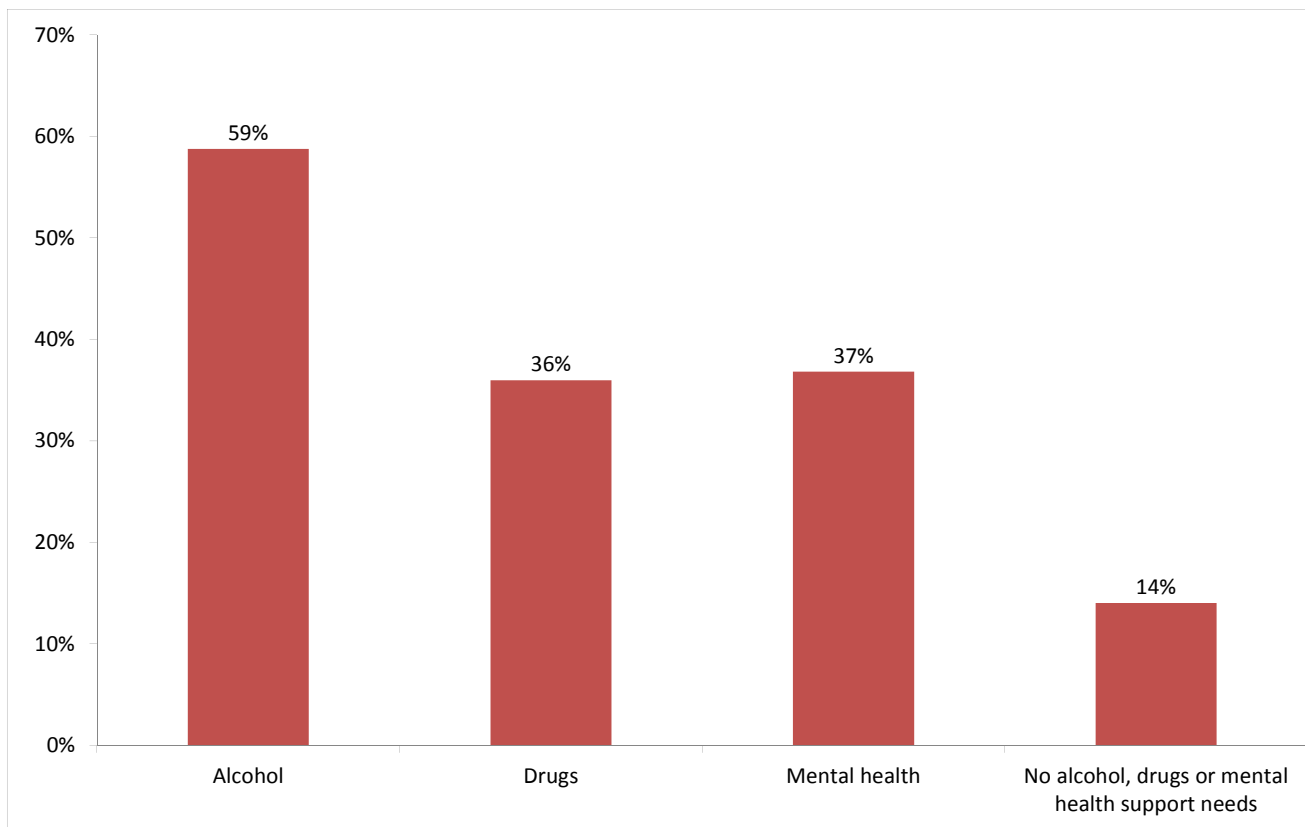
Breakdown by accommodation

 Planned/Unplanned		
Accommodation 	Planned	Total
St Mungo's - Cromwell Road	4	4
St Mungo's - Redcliffe Gardens	1	1
Total	5	5

Client Support Needs/Institutional History

10) Support needs

People contacted by outreach or BBS teams and/or arriving in accommodation in the quarter by support needs



Base: 114 Note that the base figure for this graph excludes clients where all 3 support needs are not known or not recorded (27).

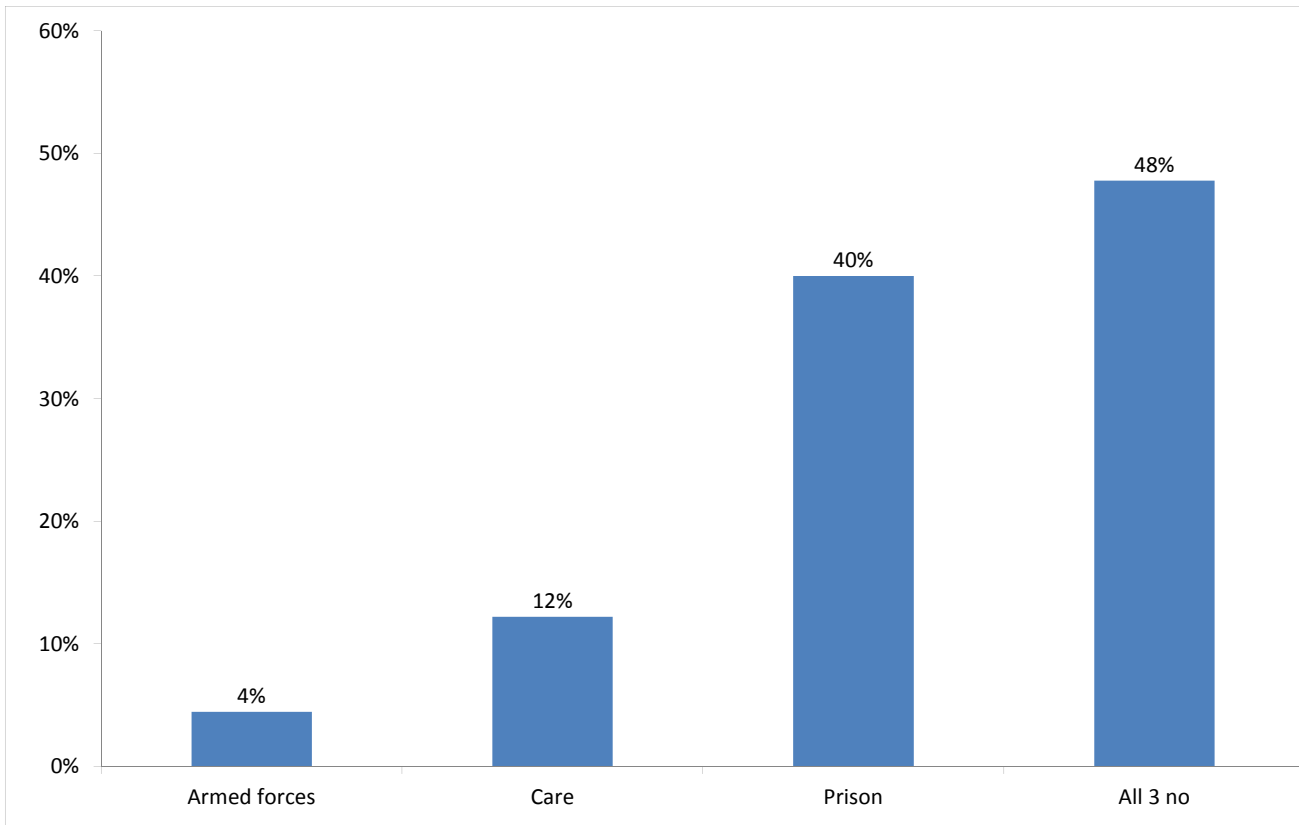
Support Needs	No. of people	%
Alcohol only	30	21%
Drugs only	9	6%
Mental health only	16	11%
Alcohol and drugs	16	11%
Alcohol and mental health	10	7%
Drugs and mental health	5	4%
Alcohol, drugs and mental health	11	8%
All 3 no	16	11%
All 3 not known or not assessed	27	19%
All 3 no, not known or not assessed	1	1%
Total	141	100%

The proportion of people contacted in Kensington and Chelsea with an alcohol, drugs or mental health support need is consistent with the previous two periods.

The proportion of people contacted in Kensington and Chelsea with an alcohol, drugs and mental health support need is with the proportion across all boroughs this quarter.

11) Experience of armed forces, care and prison

People contacted by outreach or BBS teams and/or arriving in accommodation in the quarter by experience of the armed forces, care or prison



Base: 90 Note that the base figure for this graph excludes clients where all 3 institutional histories are not known.

4 people contacted in Kensington and Chelsea this quarter have previously been in the armed forces (3 last quarter).

Nationality	Number	% of people seen rough sleeping
UK	2	3%
Non-UK	2	3%
Total	4	6%

11 people contacted in Kensington and Chelsea this quarter have previously been in care (8 last quarter).

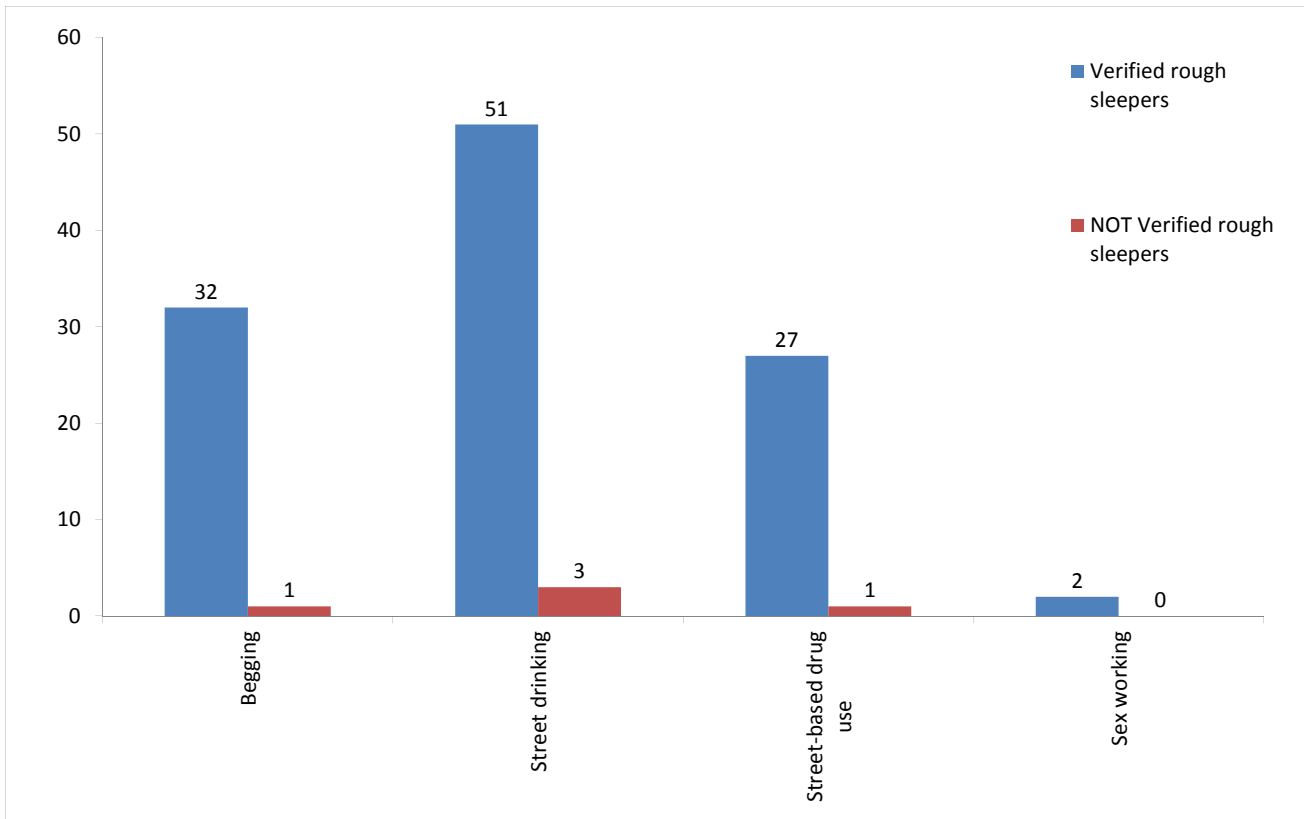
36 people contacted in Kensington and Chelsea this quarter have previously been in prison (28 last quarter).

It is possible for someone contacted to have previous experience of more than one institution and so be included in more than one of the above figures. 6 people contacted in the year have been in care and prison.

The proportion of people contacted in Kensington and Chelsea with previous experience of the armed forces, care or prison is consistent with previous periods in the quarter.

12) Street activity

Street population (people who rough sleep and/or engage in a street lifestyle) contacted by outreach who fall into one or more of the street activity categories on CHAIN



Base for verified rough sleepers: 69

Base for people not verified as rough sleepers: 5

Of the 140 verified rough sleepers contacted this quarter, 69 (49%) have been assessed as engaging in one or more street activities.

Some of these people contacted this quarter have been seen engaging in more than one type of street activity at some point.

In addition to the 140 verified rough sleepers contacted in the quarter by outreach or BBS teams, 8 people who are considered vulnerable but have not been seen rough sleeping were also contacted. Of these:

- 1 had a confirmed reconnection;
- 1 was booked into accommodation in Kensington & Chelsea
- 1 was recorded as having arrived at accommodation reporting to CHAIN.