



CHAIN
Quarterly Report for
City of London
July - September 2011



CHAIN Quarterly report for City of London 1st July to 30th September 2011

Contents

Outreach Work

1) Rough sleeping

People seen by outreach or building based (BBS) teams in the quarter - rough sleeping or contacted either on the streets or in services

2) Rough sleeping volume

People seen rough sleeping by number of bedded down contacts during the quarter

3) Nationality of rough sleepers

People seen rough sleeping by outreach or BBS teams during the quarter.

4) People contacted by month

People seen rough sleeping by outreach or building based (BBS) teams by month

5) No booking into accommodation events

People contacted in the quarter with no accommodation events (booking or referrals) by any outreach or BBS team, by total number of street contacts recorded on CHAIN

6) Booking into accommodation and reconnection events

Outreach accommodation (bookings and referrals) and reconnection events achieved in the quarter by type of accommodation

Hostels, assessment centres, rolling shelters and second stage accommodation

7) Arrivals

Temporary accommodation arrivals by accommodation project and source of referral.

8) Departures - destination on departure

Departure actions by destination on departure

9) Departures - reason for leaving

Departures by whether or not the departure was planned or unplanned

Support needs and institutional history

10) Support needs

People contacted by outreach or BBS teams and/or arriving in accommodation in the quarter by support needs

11) Experience of armed forces, care and prison

People contacted by outreach or BBS teams and/or arriving in accommodation in the quarter by experience of the armed forces, care or prison

Wider street population

12) Street activity

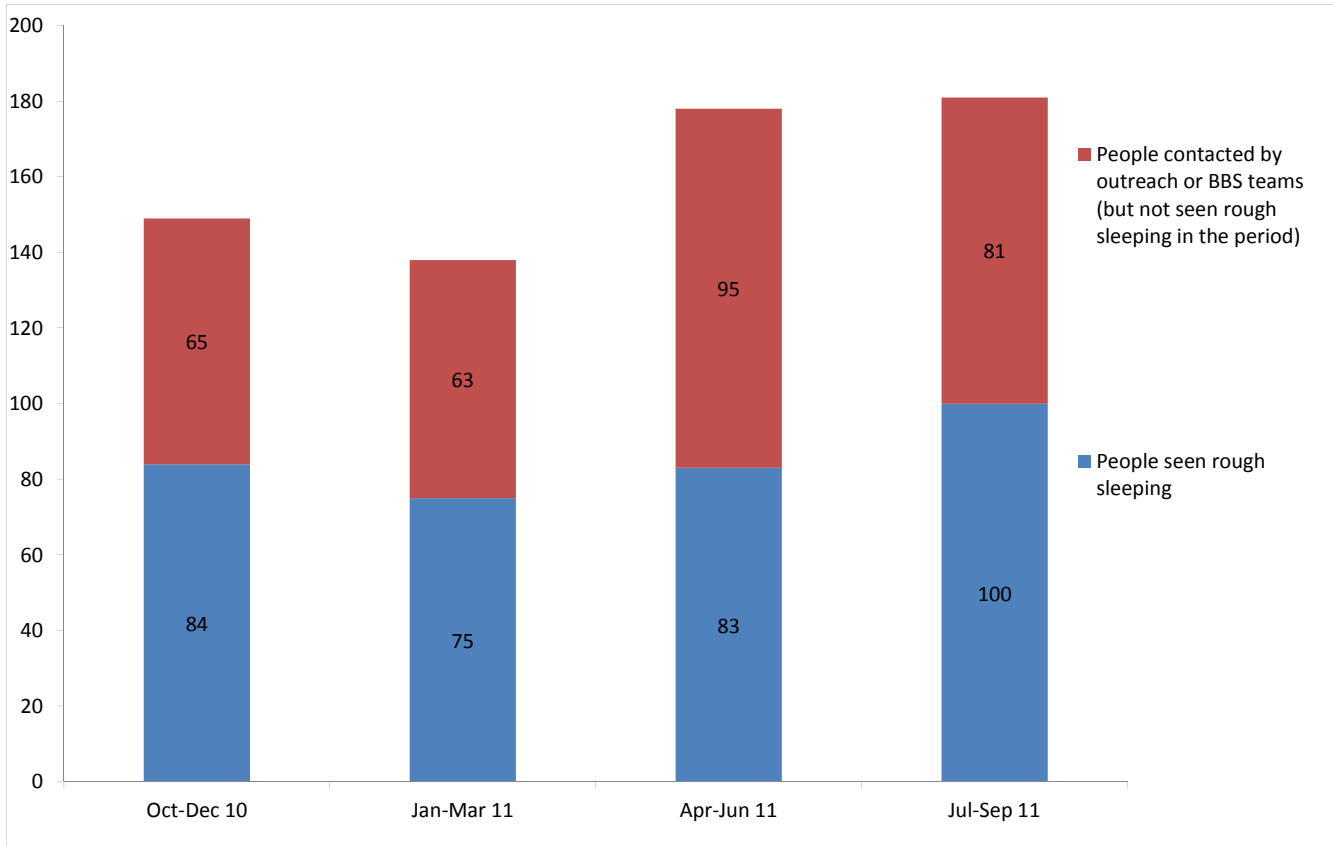
Street population (people who rough sleep and/or engage in a street lifestyle) contacted by outreach who fall into one or more of the street activity categories on CHAIN

CHAIN Quarterly report for City of London

Outreach Work

1) Rough sleeping

People seen by outreach or building based (BBS) teams in the quarter - rough sleeping or contacted either on the streets or in services



Oct-Dec 10 base: 149
Jan-Mar 11 base: 138
Apr-Jun 11 base: 178
Jul-Sep 11 base: 181

181 verified rough sleepers were contacted by services in City of London during the quarter. This is an increase from 178 last quarter and compares to 201 in the same quarter last year.

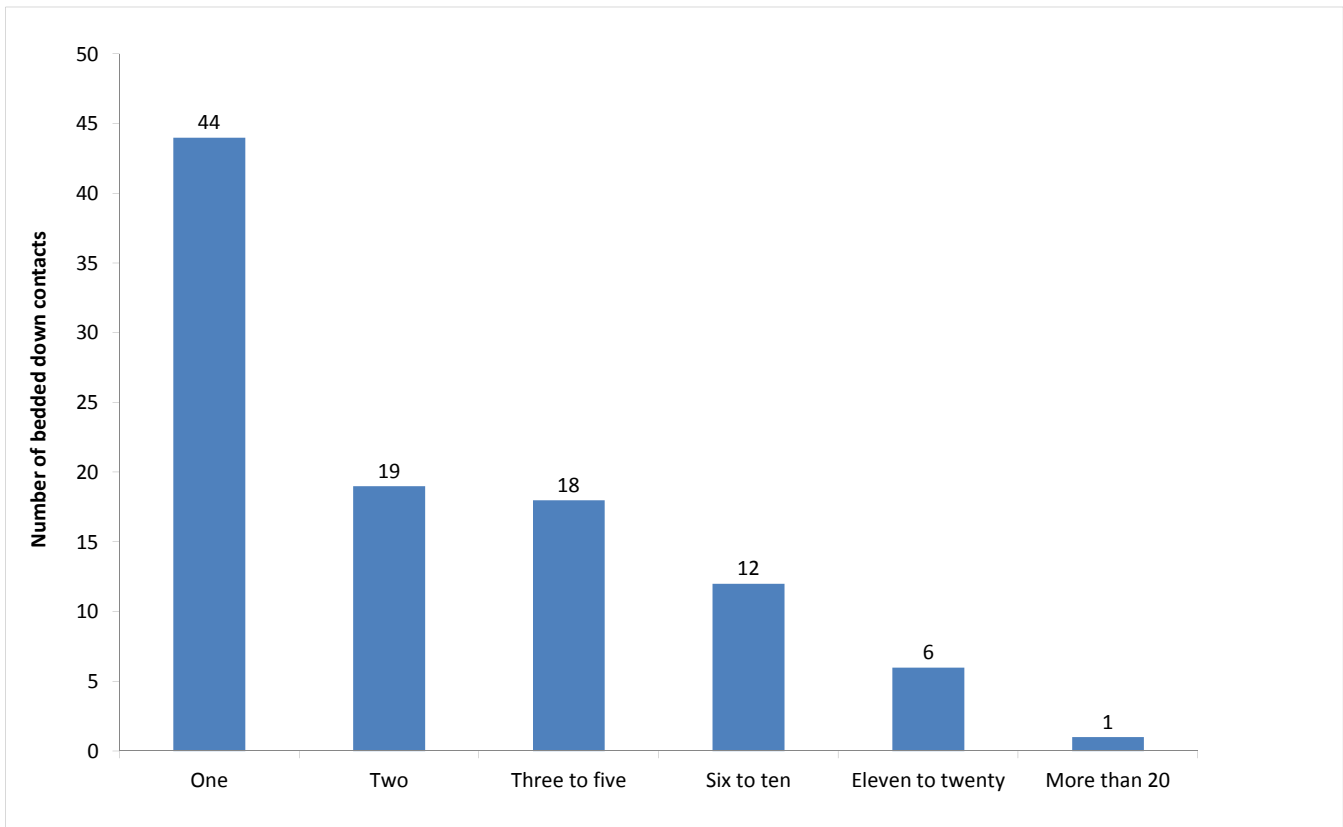
Of these 181, 100 had a bedded down street contact in the quarter and so were known to have slept rough in City of London during the quarter. The number sleeping rough this quarter has increased by 20%.

In the same period last year, 106 people were seen sleeping rough.

29 people were seen rough sleeping for the first time this quarter (flow). This compares to 22 in the previous quarter, an increase of 32%.

2) Rough sleeping volume

People seen rough sleeping by number of bedded down contacts during the quarter



Base: 100

Of the 100 people seen rough sleeping this quarter, 44 only had a single bedded down street contact.

Of the 100 people seen bedded down, 11 were from CEE countries and seen only once during the period.

NB CEE nationals often cannot be offered the same service as other people due to benefit restrictions.

3) Nationality of rough sleepers

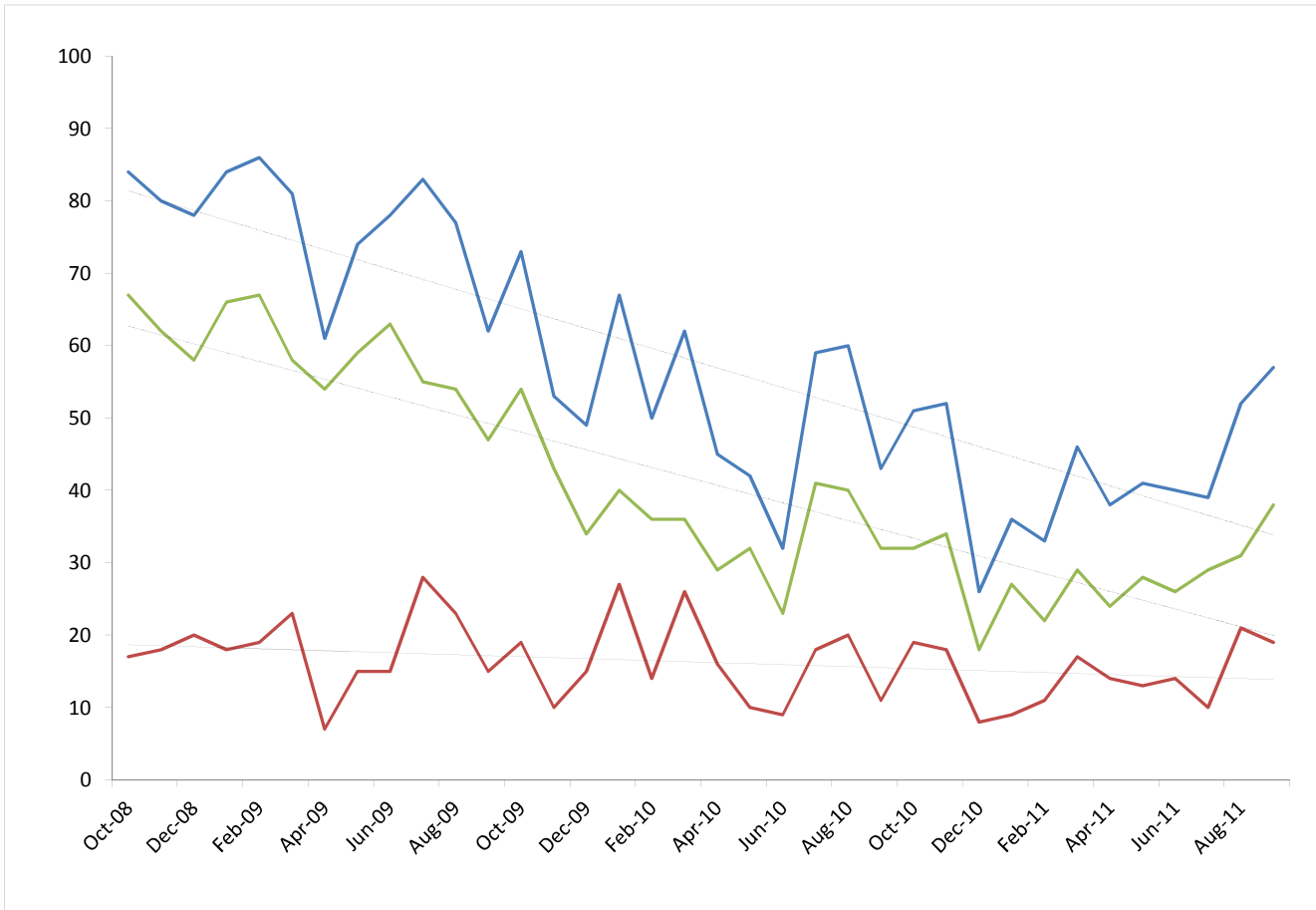
People seen rough sleeping by outreach or BBS teams during the quarter.

Nationality	Oct - Dec	%	Jan - Mar	%	Apr - Jun	%	Jul - Sep	%
UK	34	44%	32	46%	41	52%	45	48%
Ireland (Republic of)	3	4%	4	6%	1	1%	1	1%
Portugal	0	0%	1	1%	0	0%	2	2%
Bulgaria	1	1%	1	1%	0	0%	0	0%
Czech Republic	0	0%	0	0%	0	0%	0	0%
Estonia	0	0%	0	0%	1	1%	1	1%
Hungary	1	1%	4	6%	1	1%	1	1%
Latvia	3	4%	3	4%	3	4%	3	3%
Lithuania	4	5%	6	9%	9	11%	13	14%
Poland	20	26%	8	11%	8	10%	15	16%
Romania	3	4%	0	0%	2	3%	0	0%
Slovenia	0	0%	0	0%	0	0%	0	0%
Slovakia	1	1%	1	1%	3	4%	2	2%
Central and East European (CEE) sub-total	33	42%	23	33%	27	34%	35	38%
other Europe	5	6%	5	7%	7	9%	4	4%
Eritrea	0	0%	0	0%	0	0%	0	0%
Africa	1	1%	2	3%	0	0%	1	1%
America	0	0%	0	0%	0	0%	3	3%
Asia	2	3%	3	4%	3	4%	2	2%
Australasia	0	0%	0	0%	0	0%	0	0%
<i>Missing</i>	3		1		1		2	
<i>Not known</i>	3		4		3		5	
Total	84		75		83		100	
Total**	78	100%	70	100%	79	100%	93	100%

Base: 93 Note that the base figure for this graph excludes clients where the nationality is missing or not known (7).

4) People contacted by month

People seen rough sleeping by outreach or building based (BBS) teams by month



The blue line shows the total number of people seen rough sleeping.

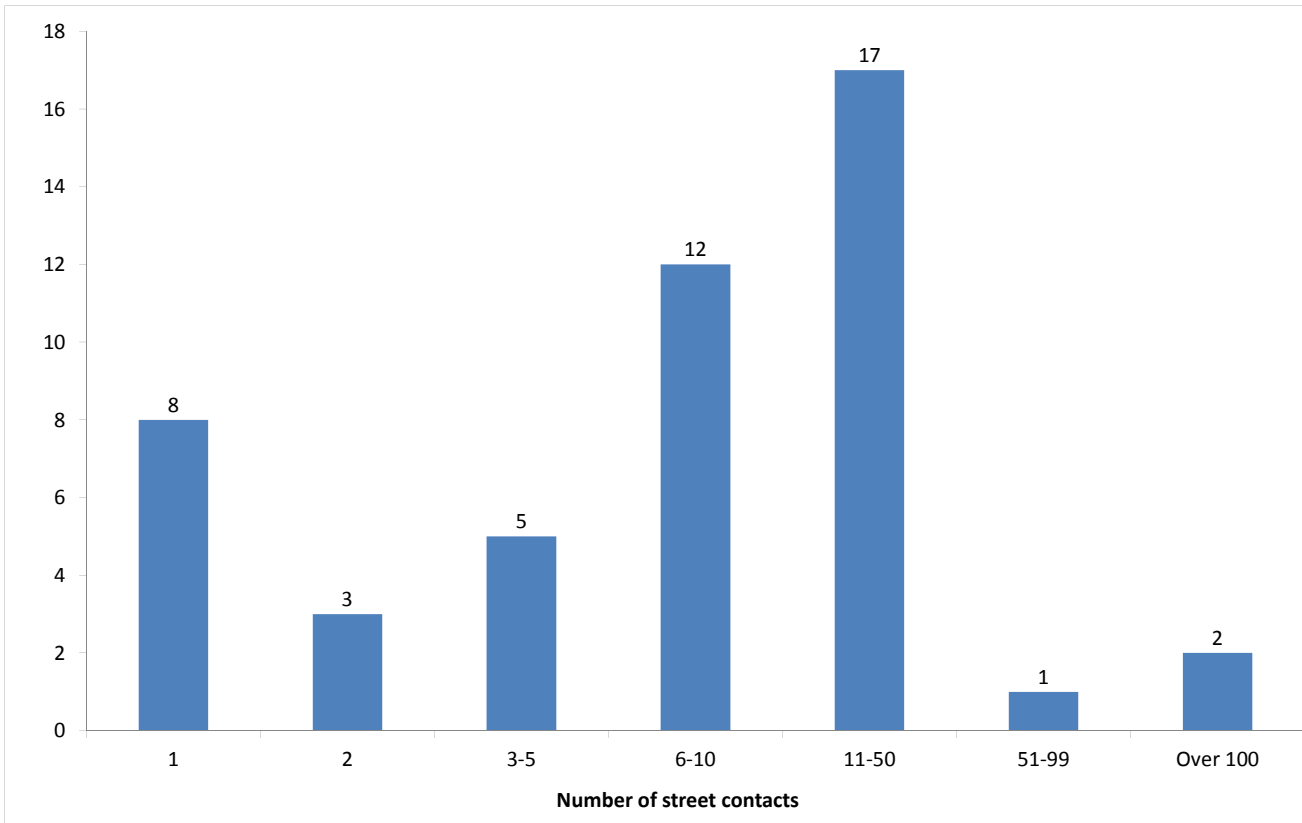
The green line shows the number of people seen rough sleeping excluding anyone from Central and Eastern European (CEE) countries.

The pink line shows the number of people seen rough sleeping from CEE countries.

The difference in trend lines indicates the increasing influence of CEE nationals on the upward trend in people seen rough sleeping by outreach teams in London.

5) No booking into accommodation events

People contacted in the quarter with no accommodation events (booking or referrals) by any outreach or BBS team, by total number of street contacts recorded on CHAIN



Base: 48

48 (27%) verified rough sleepers contacted across City of London this quarter have never had a booking in action recorded on CHAIN. This has increased slightly from 46 (26%) in the previous period.

32 of these people have slept rough in the quarter, which is 32% of all people sleeping rough this quarter.

8 (17%) of the people who have never had a booking in action recorded on CHAIN have only ever had 1 street contact recorded.

2 people in City of London have never had a booking in action despite having over 100 street contacts. This is consistent with previous quarters.

6) Booking into accommodation and reconnection events

Outreach accommodation (bookings and referrals) and reconnection events achieved in the quarter by type of accommodation

Accommodation type	Jul - Sep 11	%	Apr - Jun 11	%
Assessment centre	2	4%	0	0%
Bed & breakfast	1	2%	7	13%
Clinic/Detox/Rehab	0	0%	0	0%
Night Centre	0	0%	0	0%
Rolling shelter	12	22%	12	22%
Hostel	19	35%	11	20%
Other temporary	0	0%	0	0%
Second-stage accommodation	0	0%	0	0%
St Mungo's complex needs	0	0%	0	0%
St Mungo's semi-independent	0	0%	0	0%
Clearing House/RSI	0	0%	3	6%
LA tenancy (general needs)	0	0%	1	2%
Private rented sector	0	0%	0	0%
Private rented sector - independent	0	0%	1	2%
Private rented sector - with some floating support/support	0	0%	0	0%
RSL tenancy (general needs)	0	0%	0	0%
Sheltered housing	0	0%	0	0%
Supported housing	1	2%	0	0%
Other long-term accommodation	1	2%	0	0%
Bookings into accommodation total	36	65%	35	65%
Return to home area	13	24%	15	28%
Seeking work	2	4%	0	0%
Move to area for friends/family	0	0%	2	4%
Move to area with appropriate services	5	9%	4	7%
Other	0	0%	0	0%
Reconnections total	19	35%	19	35%
TOTAL	55	100%	54	100%

Outreach and BBS teams across City of London succeeded in reconnecting or booking into accommodation 39 people, 22% of the 181 people contacted during the quarter.

This is a similar proportion to previous periods - (Oct-Dec 2010: 37, 25%; Jan-Mar: 31, 22%; Apr-Jun: 44, 25%).

24 people had a total of 36 booking in events. This indicates that individuals can be booked into accommodation (the same type or different) more than once in the quarter.

2 people were booked into long-term accommodation.

18 people were booked into hostel accommodation. This compares to 11 people last quarter.

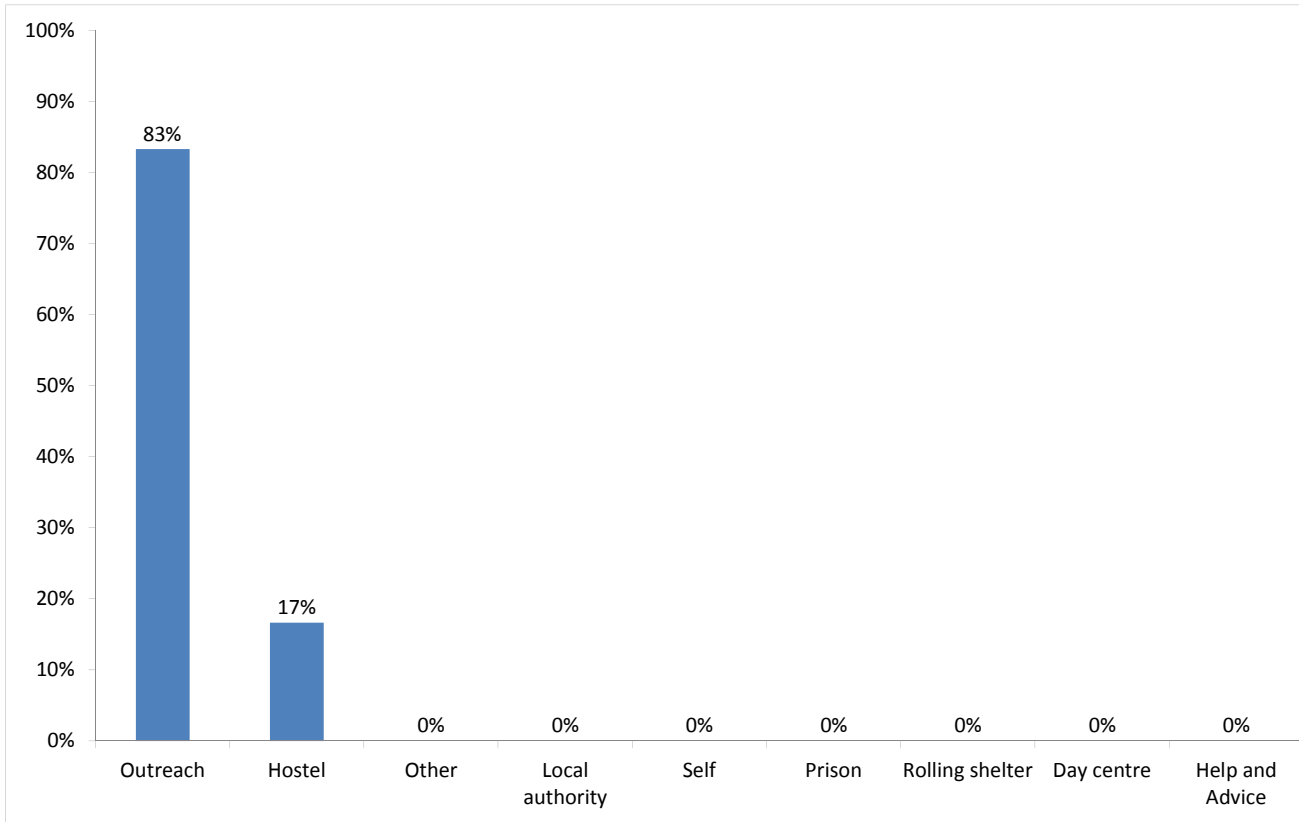
Outreach and BBS teams across City of London achieved a confirmed reconnection with 16 people they contacted this quarter. This is 9% of the people contacted by outreach or BBS teams this quarter.

19 confirmed reconnection events were recorded by outreach and BBS teams for verified rough sleepers this quarter. In addition, teams recorded 2 such actions for the wider street population (people not seen sleeping rough).

Temporary Accommodation: hostels, assessment centres, rolling shelters and second stage

7) Arrivals

Temporary accommodation arrivals by accommodation project and source of referral.



Base: 6

6 people arrived at accommodation in City of London this year. These 6 people had 6 arrival actions.

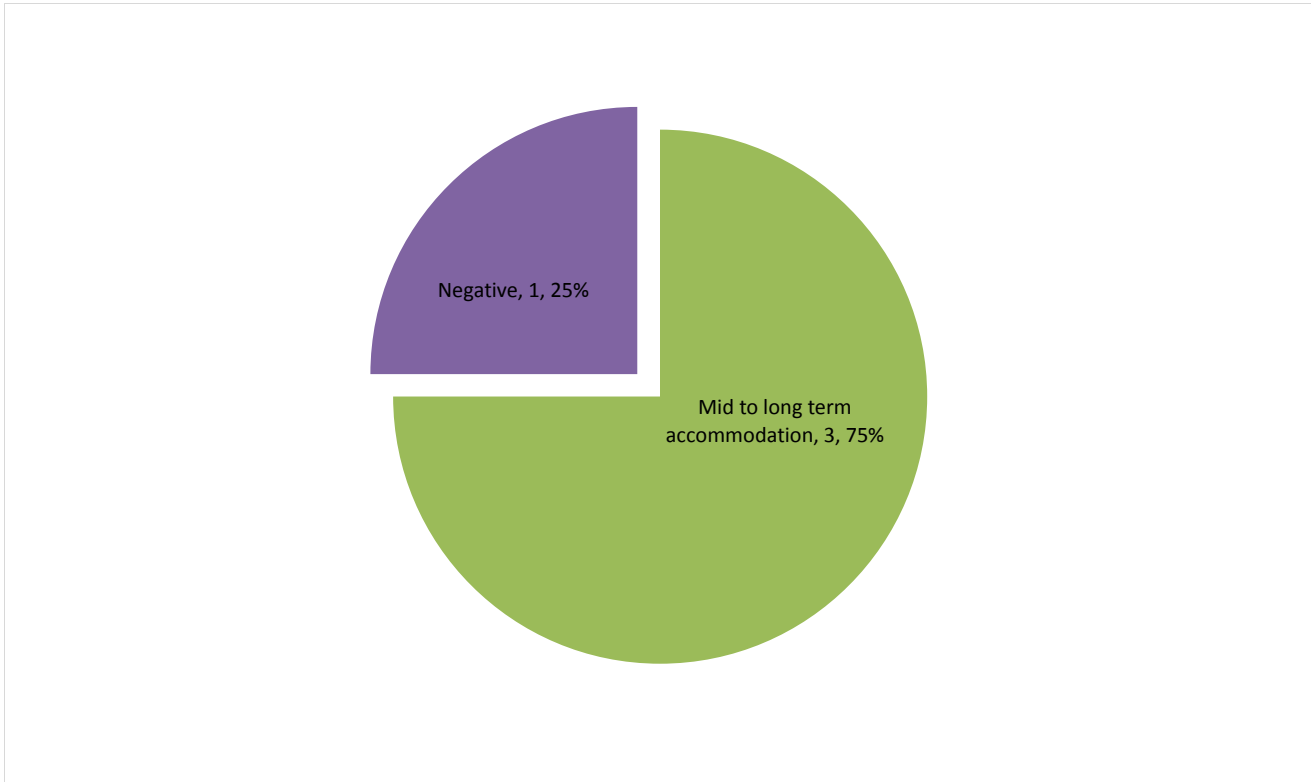
The numbers of people arriving and arrivals is similar to previous periods (Oct-Dec 2010: 5; Jan-Mar: 5; Apr-Jun: 10).

Breakdown by accommodation:

Source of referral	BBS - St Mungo's	City Rough Sleepers Team	St Mungo's internal transfer	Total
Providence Row - Middle Street		3		3
St Mungo's - The Lodge	1	1	1	3
Total	1	4	1	6

8) Departures - destination on departure

Departure actions by destination on departure



Destination categories on CHAIN	Chart category	Colour
Care home, Clearing House/RSI, Home area, Hospital - long term, LA tenancy (general needs), Long-term accommodation, Previous home, Private rented sector - independent, Private rented sector - supported, RSL tenancy (general needs), Sheltered Housing, Supported Housing	Mid to long term accommodation	Green
Bed & Breakfast, Detox clinic, Hostel, Hostel - another organisation, Hostel - within the organisation, Rehab clinic, Temporary accommodation, Psychiatric hospital, Hospital - NOT long term/acute care	Transfer	Red
Not known, Sleeping rough/returned to streets, Taken into custody	Negative	Purple
Died, Outside London, Staying with family, Staying with friends	Other	Blue

Destination on departure from temporary accommodation	Number	%
LA tenancy (general needs)	2	50%
Not known	1	25%
Sheltered Housing	1	25%
Total	4	100%

3 people departed from accommodation in City of London this year. These 3 people had 4 departure actions. This indicates that an individual can depart more than once (at the same accommodation project or different) in a period.

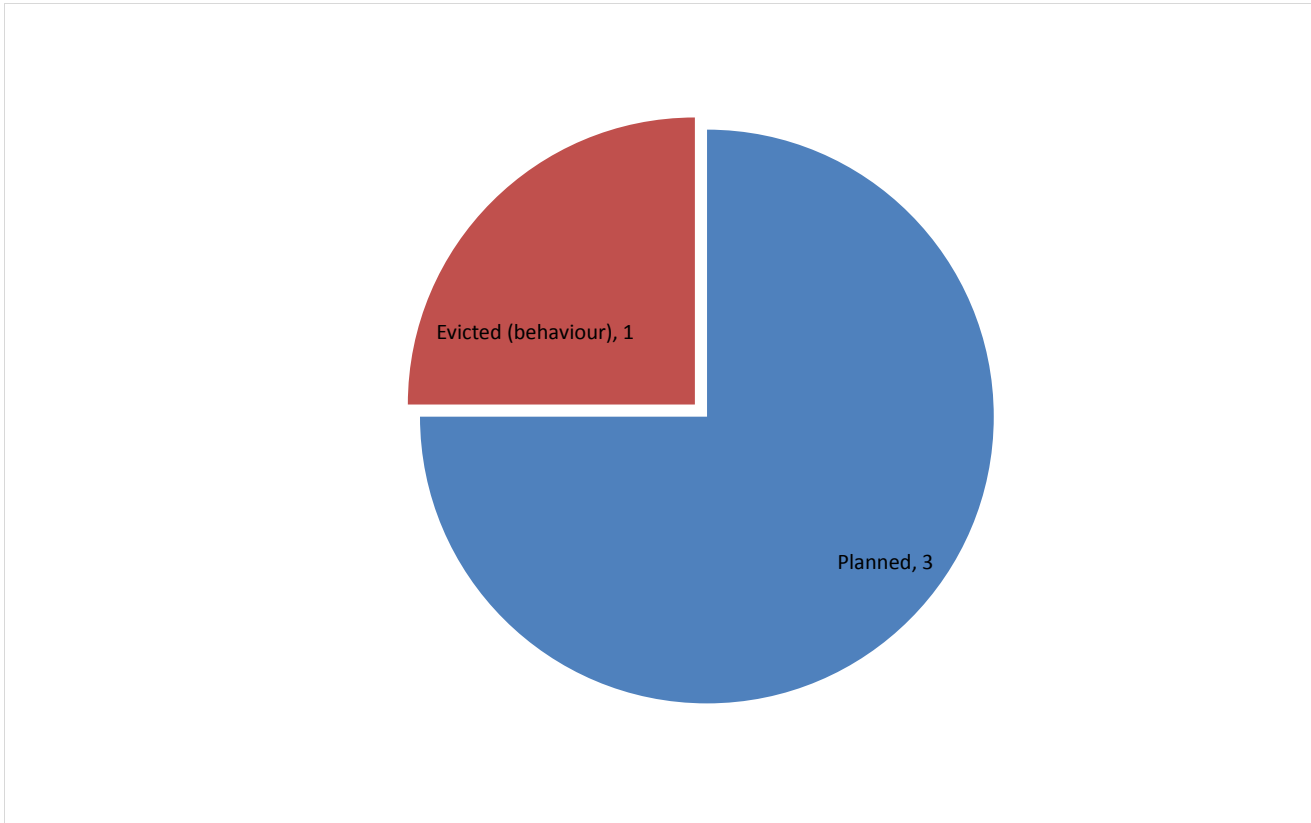
75% of people left accommodation to move to mid to long-term accommodation. This is an increase on the previous three periods.

Breakdown by accommodation

Destination Accommodation	LA tenancy (general needs)	Not known	Sheltered Housing	Total
Providence Row - Middle Street	2			2
St Mungo's - The Lodge		1	1	2
Total	2	1	1	4

9) Departures - reason for leaving

Departures by whether or not the departure was planned or unplanned



Base: 4

3 people departed from accommodation in City of London this quarter. These 3 people had 4 departure actions. This indicates that an individual can depart more than once (from the same accommodation project or different) in a period.

75% of departures were due to a planned move. This is an increase from the previous three quarters (Oct-Dec 2010: 50%; Jan-Mar: 43%; Apr-Jun: 64%).

25% of departures were due to evictions. This is higher than previous two quarters (Oct-Dec 2010: 38%, Jan-Mar: 0%; Apr-Jun: 9%).

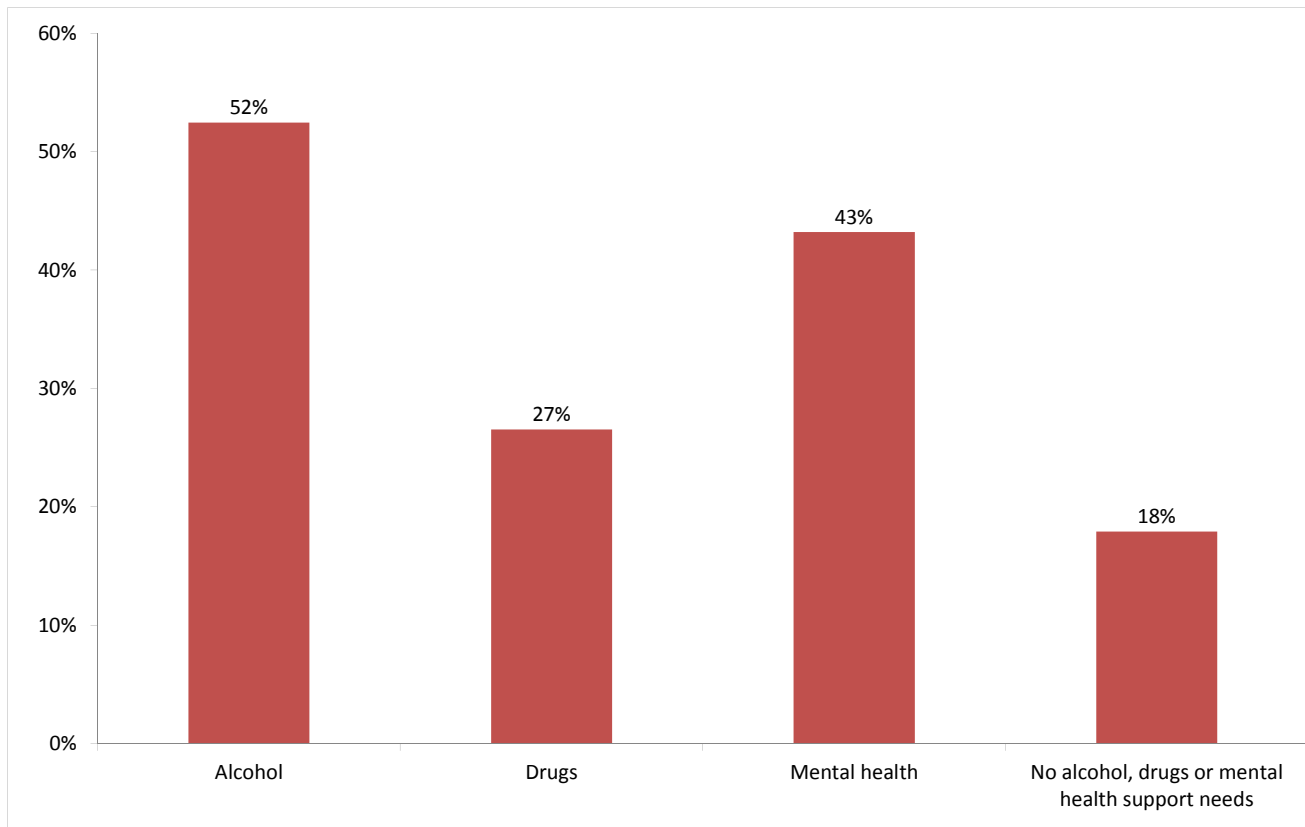
Breakdown by accommodation

Planned/Unplanned Accommodation	Planned	Evicted (behaviour)	Total
Providence Row - Middle Street	2		2
St Mungo's - The Lodge	1	1	2
City of London Total	3	1	4
Total	3	1	4

Client Support Needs

10) Support needs

People contacted by outreach or BBS teams and/or arriving in accommodation in the quarter by support needs



Base: 162 Note that the base figure for this graph excludes clients where all 3 support needs are not known or not recorded (19).

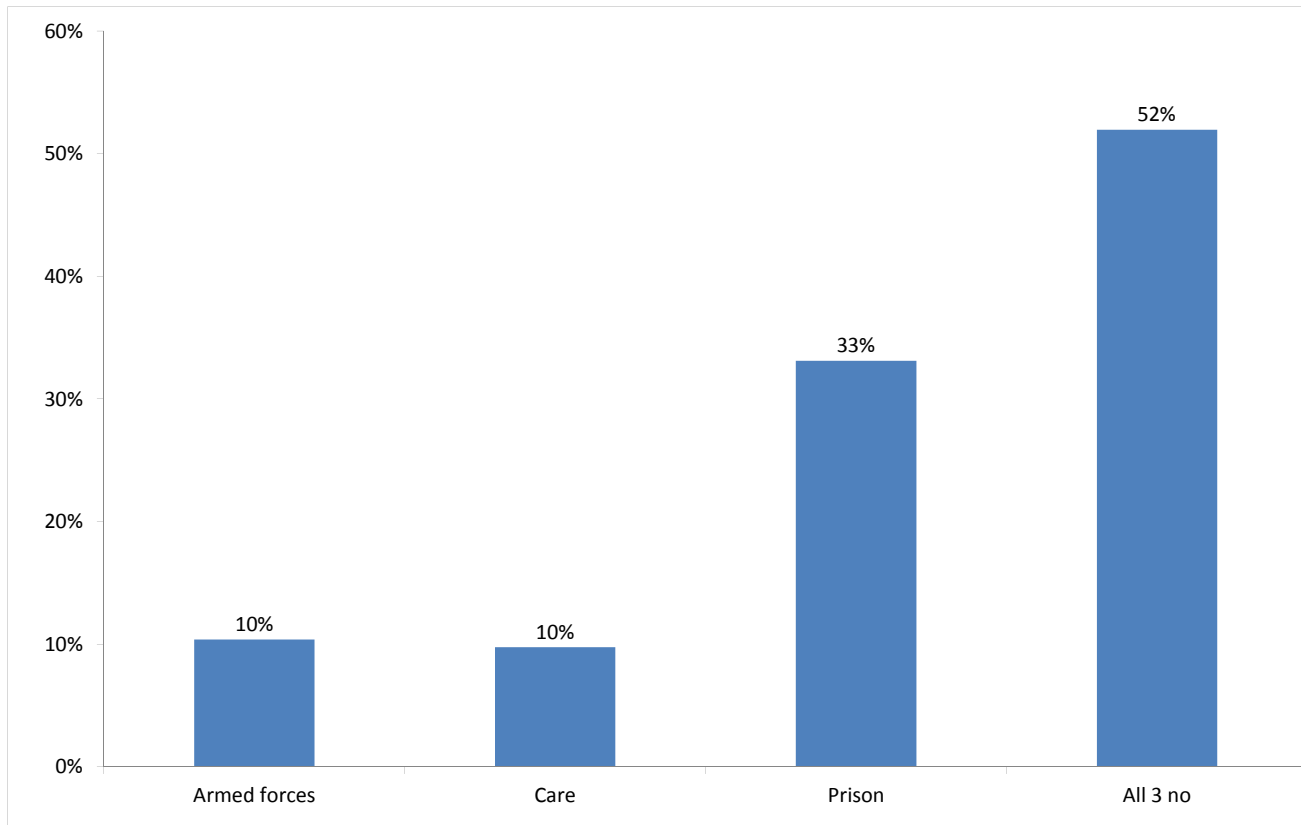
Support Needs	No. of people	%
Alcohol only	35	19%
Drugs only	13	7%
Mental health only	26	14%
Alcohol and drugs	12	7%
Alcohol and mental health	26	14%
Drugs and mental health	6	3%
Alcohol, drugs and mental health	12	7%
All 3 no	29	16%
All 3 not known or not assessed	19	10%
All 3 no, not known or not assessed	3	2%
Total	181	100%

The proportion of people contacted in City of London with an alcohol, drugs or mental health support need is consistent with the previous two periods.

The proportion of people contacted in City of London with a drugs support need (27%) is slightly lower than the proportion across all boroughs (36%) this quarter.

11) Experience of armed forces, care and prison

People contacted by outreach or BBS teams and/or arriving in accommodation in the quarter by experience of the armed forces, care or prison



Base: 154 Note that the base figure for this graph excludes clients where all 3 institutional histories are not known.

16 people contacted in City of London this quarter have previously been in the armed forces (11 last quarter).

Of these, 7 people were seen rough sleeping in the period.

Nationality	Number	% of people seen rough sleeping*
UK	1	1%
Non-UK	6	7%
Total	7	9%

15 people contacted in City of London this quarter have previously been in care (14 last quarter).

51 people contacted in City of London this quarter have previously been in prison (42 last quarter).

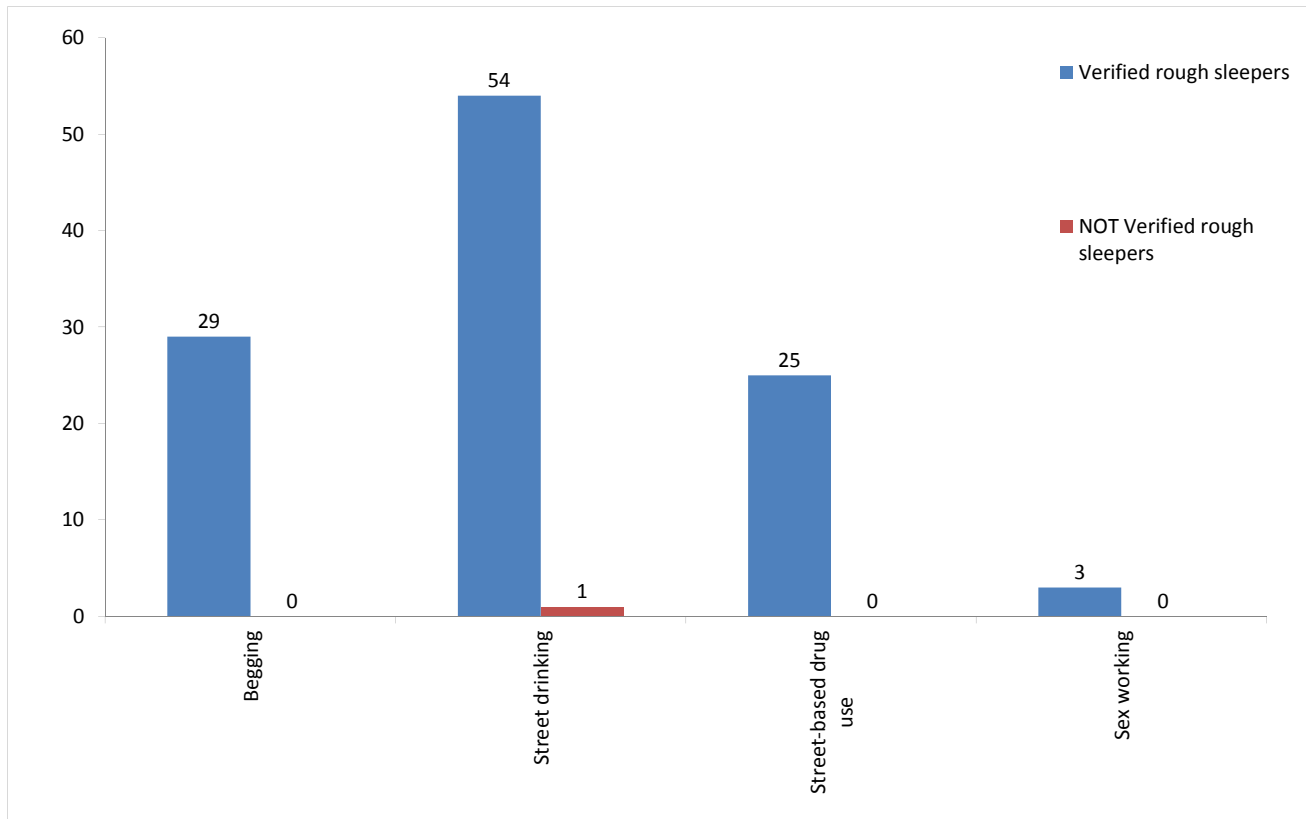
It is possible for someone contacted to have previous experience of more than one institution and so be included in more than one of the above figures. 9 people contacted in the year have been in care and prison.

The proportion of people contacted in City of London with previous experience of the armed forces, care or prison is consistent with previous periods in the quarter.

*Base: People seen rough sleeping in the period who have been assessed for armed forces, care or prison: 82

12) Street activity

Street population (people who rough sleep and/or engage in a street lifestyle) contacted by outreach who fall into one or more of the street activity categories on CHAIN



Base for verified rough sleepers: 76

Base for people not verified as rough sleepers: 8

Of the 181 verified rough sleepers contacted this quarter, 76 (42%) have been assessed as engaging in one or more street activities.

Some of these people contacted this quarter have been seen engaging in more than one type of street activity at some point.

In addition to the 181 verified rough sleepers contacted in the quarter by outreach or BBS teams, 8 people who are considered vulnerable but have not been seen rough sleeping were also contacted. Of these:

2 had confirmed reconnections.