



CHAIN

Quarterly Report for Kensington & Chelsea July-September 2010



CHAIN Quarterly report for Kensington & Chelsea

1st July to 30th September 2010

Contents

Outreach Work

1) Rough sleeping

People seen by outreach or building based (BBS) teams in the quarter - rough sleeping or contacted either on the streets or in services

2) Rough sleeping volume

People seen rough sleeping by number of bedded down contacts during the quarter

3) Nationality of rough sleepers

People seen rough sleeping by outreach or BBS teams during the quarter

4) People contacted by month

People seen rough sleeping by outreach or building based (BBS) teams by month

5) No booking into accommodation events

People contacted in the quarter with no accommodation events (booking or referrals) by any outreach or BBS team, by total number of street contacts recorded on CHAIN

6) Accommodation and reconnection events (Outreach)

Outreach accommodation (bookings and referrals) and reconnection events achieved in the quarter by type of accommodation

7) Accommodation events (rolling)

People who have been contacted by outreach or building based (BBS) teams who have been booked into accommodation compared to those with no booking or reconnection event.

Wider street population

8) Street activity

Street population (people who rough sleep and/or engage in a street lifestyle) contacted by outreach who fall into one or more of the street activity categories on CHAIN

Hostels, assessment centres, rolling shelters and second stage accommodation

9) Arrivals

Temporary accommodation arrivals by accommodation project and source of referral.

10) Departures - planned or unplanned

Departures by whether or not the departure was planned or unplanned

11) Departures - destination on departure

Departure actions by destination on departure

Support needs, institutional history and wider street population

12) Support needs

People contacted by outreach or BBS teams and/or arriving in accommodation in the quarter by support needs

13) Experience of armed forces, care or prison

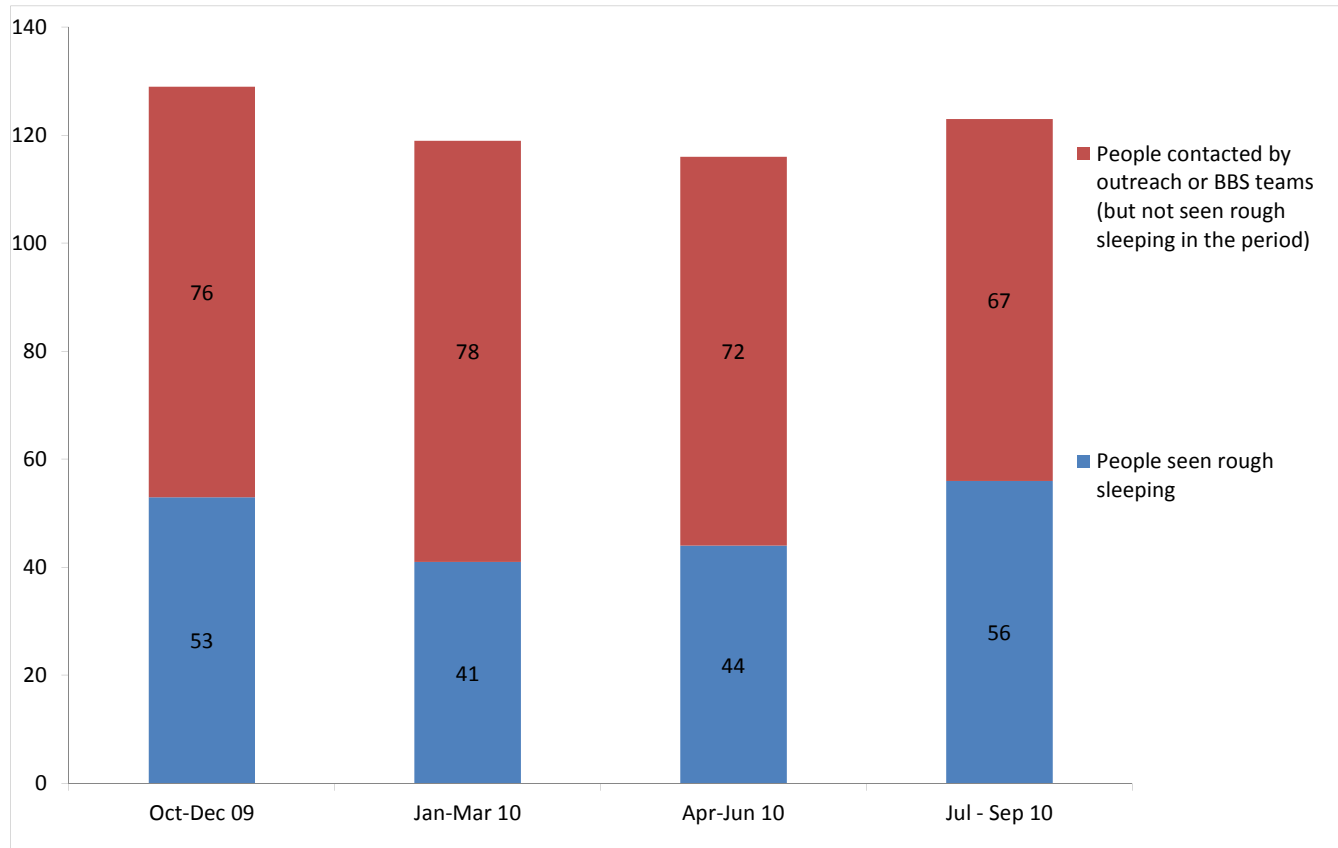
People contacted by outreach or BBS teams and/or arriving in accommodation in the quarter by experience of the armed forces, care or prison

CHAIN Quarterly report for Kensington & Chelsea

Outreach Work

1) Rough sleeping

People seen by outreach or building based (BBS) teams in the quarter - rough sleeping or contacted either on the streets or in services



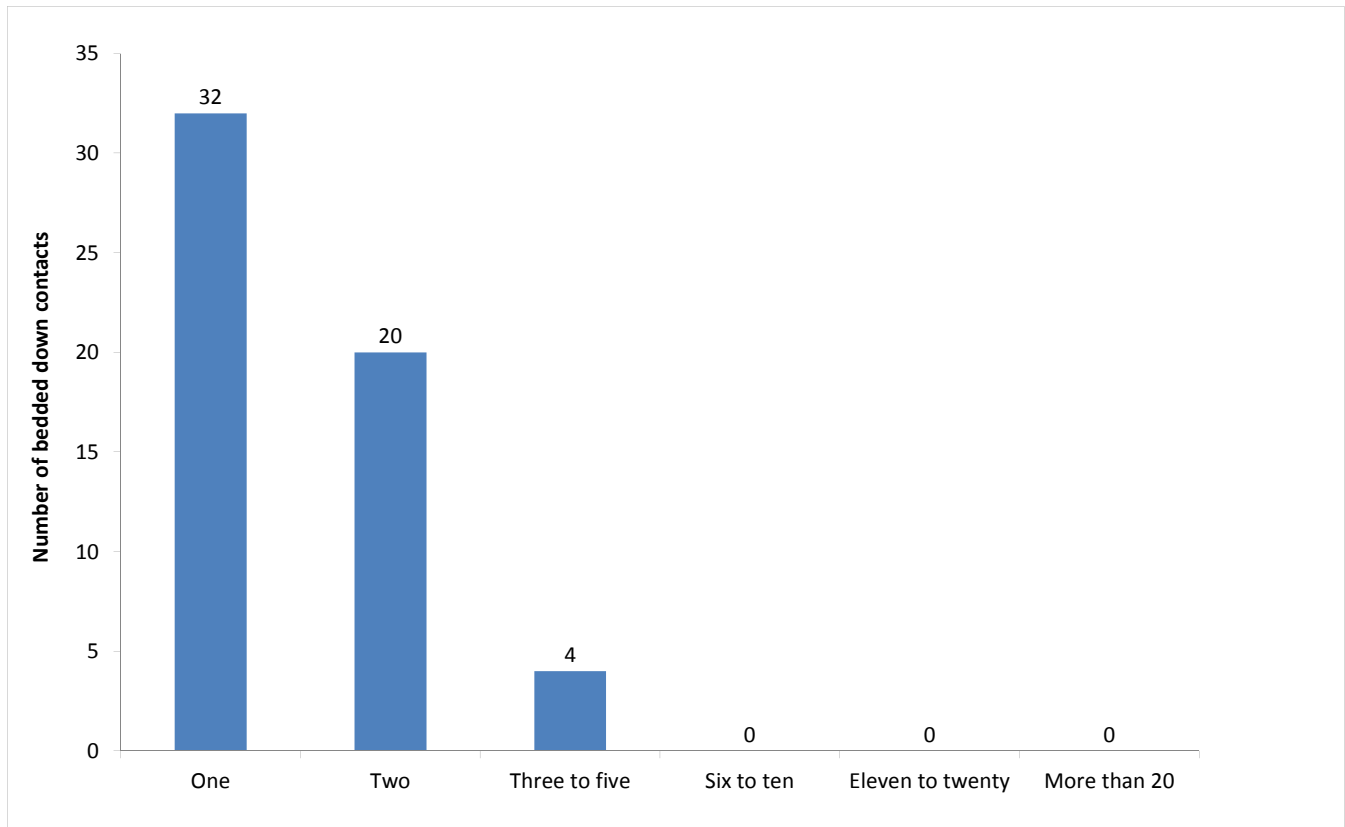
Oct-Dec 09 base: 129
Jan-Mar 10 base: 119
Apr-Jun 10 base: 116
Jul-Sep 10 base: 123

123 verified rough sleepers were contacted by services in Kensington and Chelsea during the quarter. This is an increase from 112 last quarter and compares to 131 in the same quarter last year.

Of these 123, 56 had a bedded down street contact in the quarter and so were known to have slept rough in Kensington and Chelsea during the quarter. The number sleeping rough this quarter has increased only slightly by 1%.

2) Rough sleeping volume

People seen rough sleeping by number of bedded down contacts during the quarter



Of the 56 people seen rough sleeping this quarter, 32 only had a single bedded down street contact.

Of the 56 people seen bedded down, 5 were from CEE countries and seen only once during the period.

NB CEE nationals often cannot be offered the same service as other people due to benefit restrictions.

3) Nationality of rough sleepers

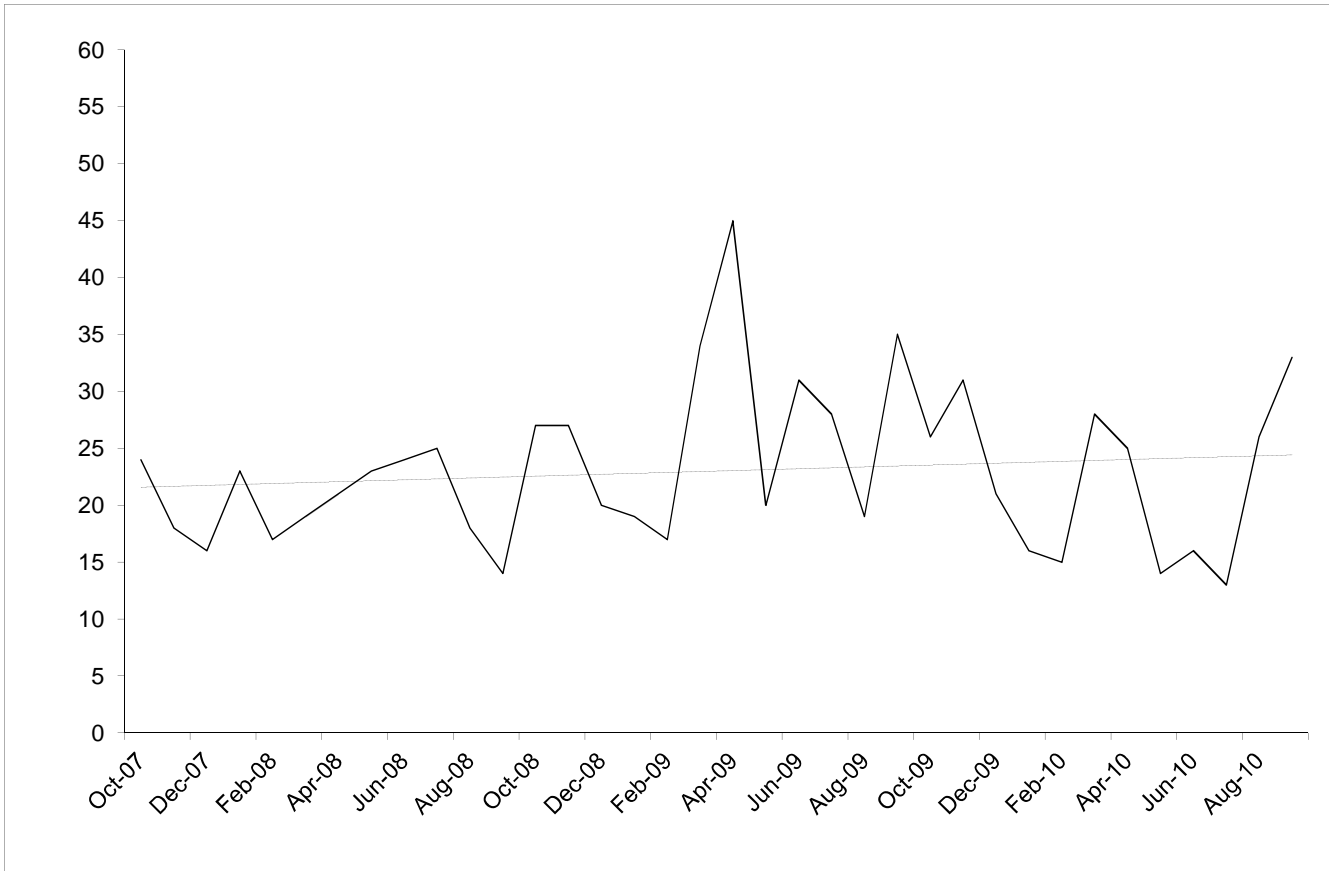
People seen rough sleeping by outreach or BBS teams during the quarter

Nationality	This 1/4	%	Last 1/4	%
UK	29	59%	19	46%
France	1	1%	2	5%
Bulgaria	0	0%	0	0%
Czech Republic	1	1%	3	7%
Estonia	0	0%	0	0%
Hungary	0	0%	0	0%
Latvia	1	1%	2	5%
Lithuania	1	1%	0	0%
Poland	5	10%	11	27%
Romania	3	6%	0	0%
Slovenia	0	0%	0	0%
Slovakia	1	1%	1	2%
Central and East European	12	24%	17	41%
other Europe	2	4%	1	2%
Africa	2	4%	0	0%
America	0	0%	0	0%
Asia	3	6%	1	2%
Australasia	0	0%	1	2%
<i>Missing</i>	5		2	
<i>Not known</i>	2		1	
Total	56		44	
Total**	49		41	100%

**This total excludes those people seen rough sleeping where their nationality is not known

4) People contacted by month

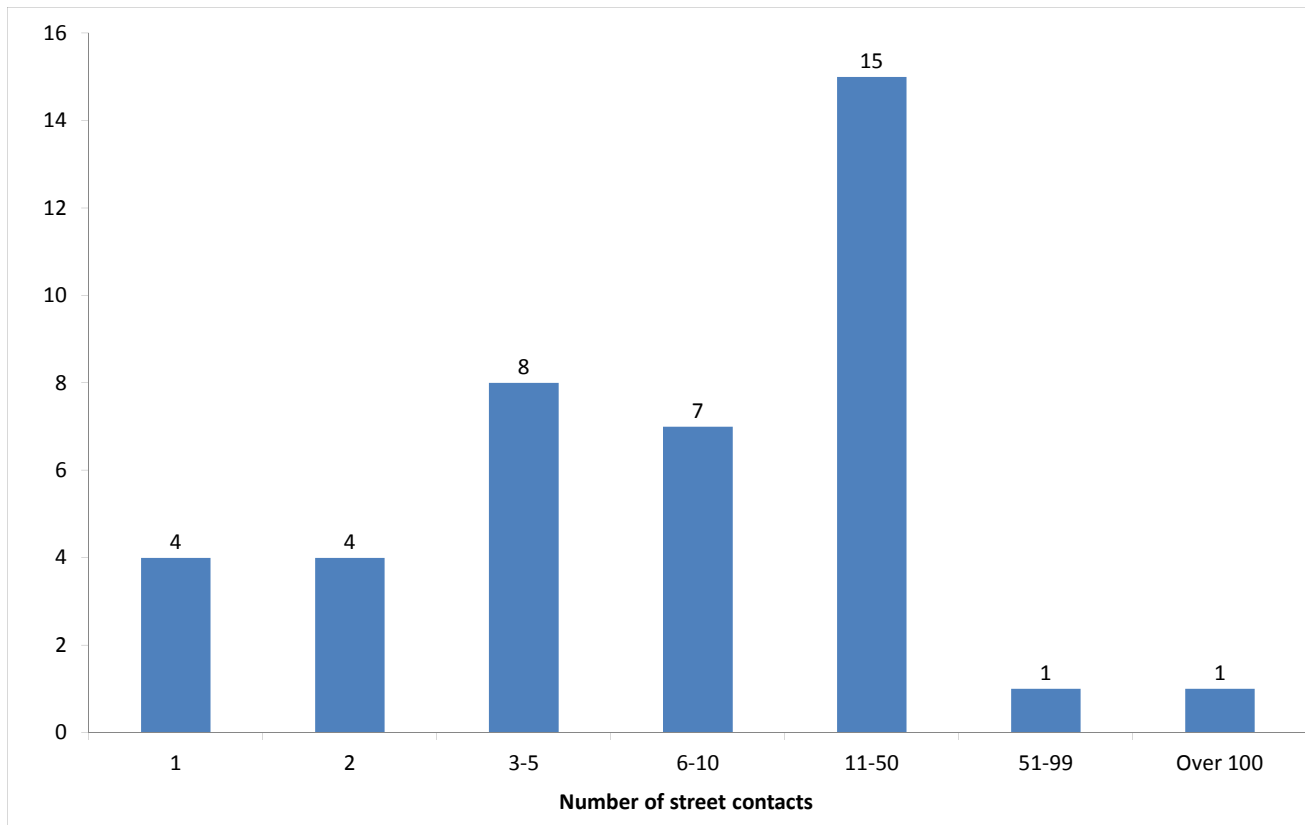
People seen rough sleeping by outreach or building based (BBS) teams by month



The black line shows the total number of people seen rough sleeping.

5) No booking into accommodation events

People contacted in the quarter with no accommodation events (booking or referrals) by any outreach or BBS team, by total number of street contacts recorded on CHAIN



Base: 40

40 (33%) verified rough sleepers contacted across Kensington and Chelsea this quarter have never had a booking in action recorded on CHAIN. This has decreased slightly from 42 (38%) in the previous period.

25 of these people have slept rough in the quarter, which is 45% of all people sleeping rough this quarter.

4 (10%) of the people who have never had a booking in action recorded on CHAIN have only ever had one street contact recorded.

1 person in Kensington & Chelsea has never had a booking in action despite having over a hundred street contacts. This is lower than previous quarters (Oct-Dec 09, 3; Jan-Mar, 3; Apr-Jun, 2).

6) Accommodation and reconnection events (Outreach)

Outreach accommodation (bookings and referrals) and reconnection events achieved in the quarter by type of accommodation

Accommodation type	No. of events	%
Assessment centre	0	0%
Bed & breakfast	0	0%
Clinic/Detox/Rehab	0	0%
Night Centre	0	0%
Rolling shelter	0	0%
<i>Referrals only (no booking in)</i>	2	
Hostel	4	50%
<i>Referral rejected (no booking in)</i>	0	
Other temporary	0	0%
Second-stage accommodation	0	0%
St Mungo's complex needs	1	13%
St Mungo's semi-independent	0	0%
Clearing House/RSI	1	13%
LA tenancy (general needs)	0	0%
Private rented sector	0	0%
Private rented sector - independent	0	0%
Private rented sector - with some floating support/support	0	0%
RSL tenancy (general needs)	0	0%
Sheltered housing	0	0%
Supported housing	0	0%
Other long-term accommodation	0	0%
Bookings into accommodation total	6	75%
Return to home area	2	25%
Seeking work	0	0%
Move to area for friends/family	0	0%
Move to area with appropriate services	0	0%
Other	0	0%
Reconnections total	2	25%
TOTAL	8	100%

PLEASE NOTE THAT THERE MAY BE SOME UNDER-RECORDING OF ACCOMMODATION OUTCOMES SINCE THE INCEPTION OF THE NEW SYSTEM. THIS IS BEING ADDRESSED BY THE CHAIN TEAM

Outreach and BBS teams across Kensington and Chelsea succeeded in reconnecting or booking into accommodation 6 people, 5% of the 123 people contacted during the quarter.

This is consistent with the previous three quarters - (Oct-Dec, 7; Jan-Mar, 8; Apr-Jun, 7).

5 people had a total of 6 booking in events. This indicates that individuals can be booked into accommodation (the same type or different) more than once in the quarter.

Nobody was booked into long-term accommodation this quarter, this compares to 1 person last quarter.

4 people were booked into hostel accommodation. This is consistent with the previous three quarters.

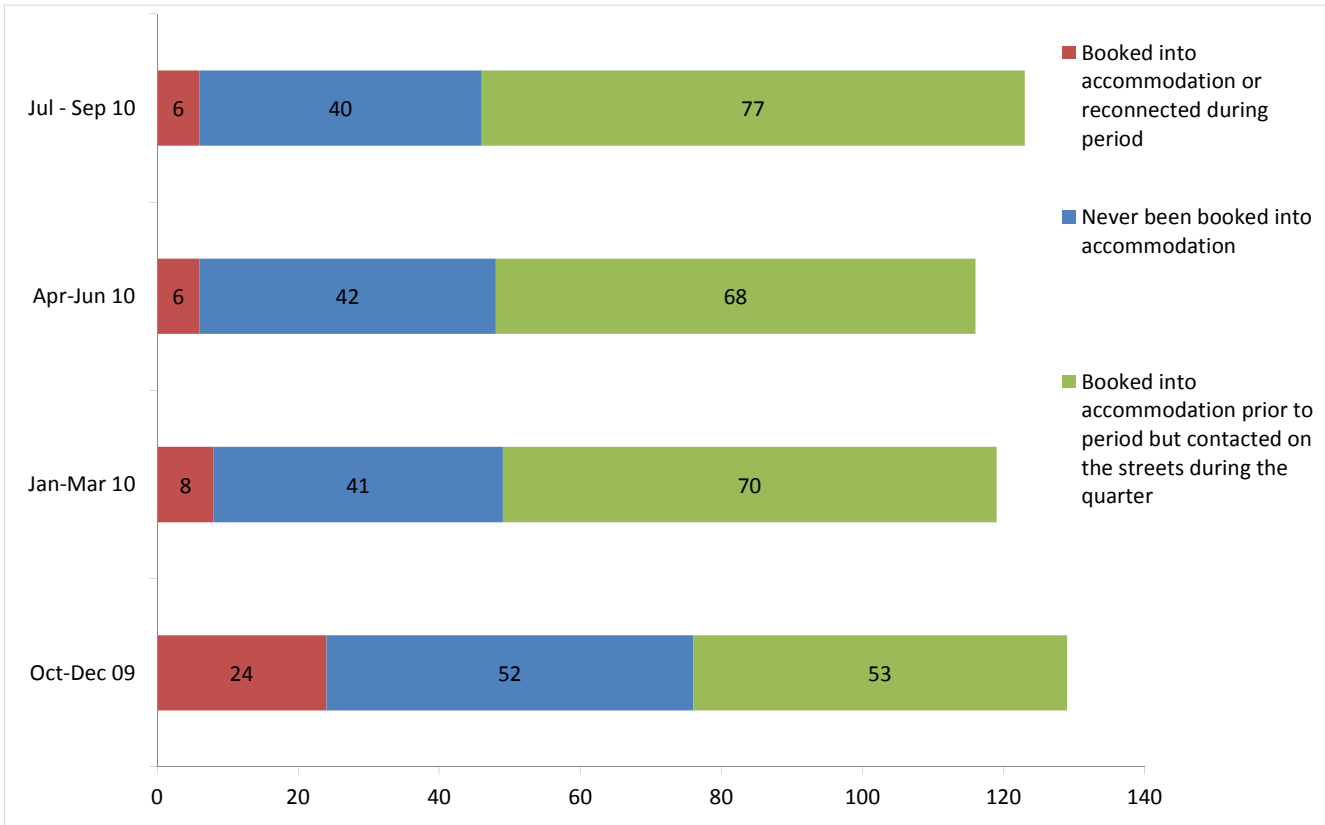
Outreach and BBS teams across Kensington and Chelsea achieved a confirmed reconnection with 1 people they contacted this quarter. This is 1% of the people contacted by outreach or BBS teams this quarter.

2 confirmed reconnection events were recorded by outreach and BBS teams for verified rough sleepers this quarter.

* These events are excluded from the total. Referral to hostel is a speculative referral to a hostel, confirmation of which leads to a booking in action being recorded.

7) Accommodation events (rolling)

People who have been contacted by outreach or building based (BBS) teams who have been booked into accommodation compared to those with no booking or reconnection event.

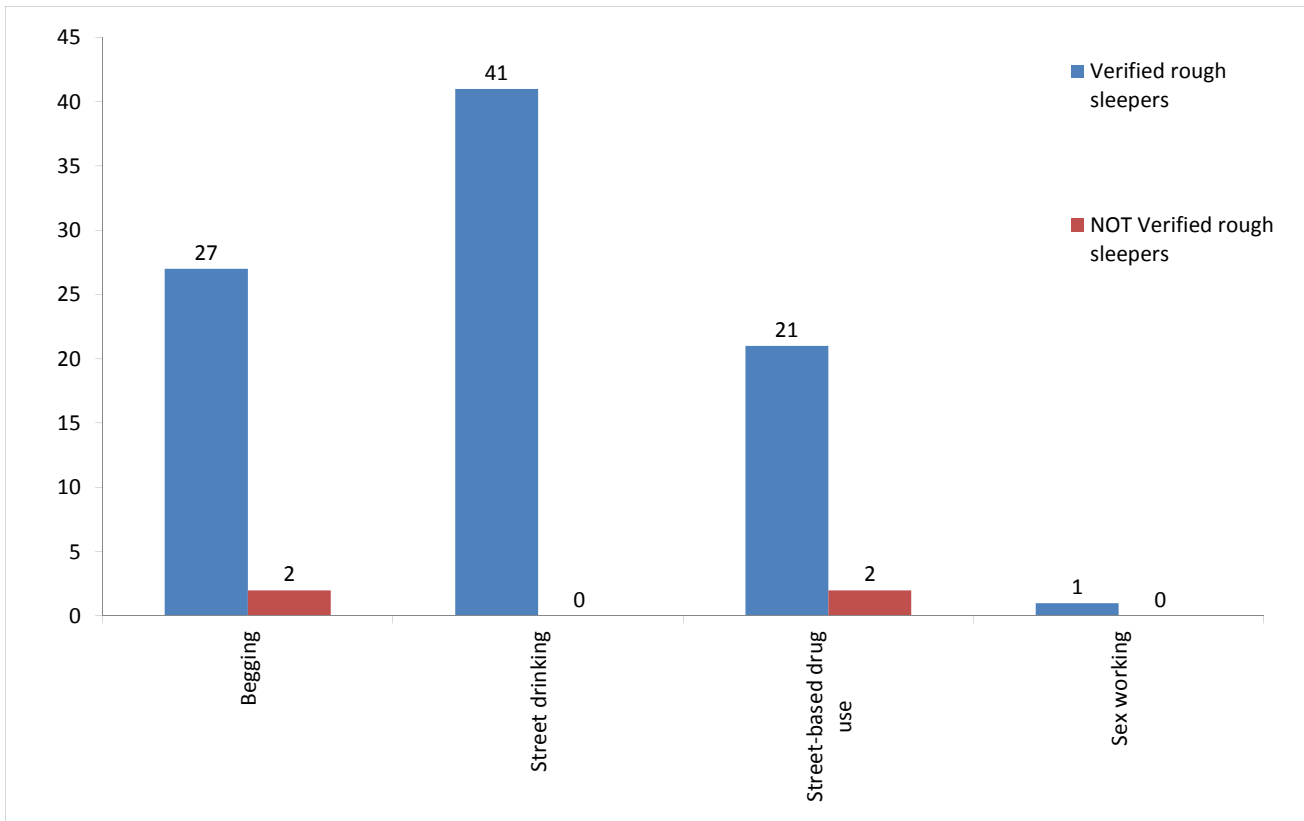


Oct-Dec 09 base: 129
 Jan-Mar 10 base: 119
 Apr-Jun 10 base: 116
 Jul-Sep 10 base: 123

The proportion of people with a street contact but who have never been booked into accommodation (33%), is consistent with the past two quarters (Jan-Mar, 34%; Apr-Jun, 36%).

8) Street activity

Street population (people who rough sleep and/or engage in a street lifestyle) contacted by outreach who fall into one or more of the street activity categories on CHAIN



Base for verified rough sleepers: 53

Base for people not verified as rough sleepers: 8

Of the 123 verified rough sleepers contacted this quarter, 53 (43%) have been assessed as engaging in one or more street activities.

Some of these people contacted this quarter have been seen engaging in more than one type of street activity at some point.

In addition to the 123 verified rough sleepers contacted in the quarter by outreach or BBS teams, 8 people who are considered vulnerable but have not been seen rough sleeping were also contacted. Of these:

Temporary Accommodation: hostels, assessment centres, rolling shelters and second stage

9) Arrivals

Temporary accommodation arrivals by accommodation project and source of referral.

3 people arrived at accommodation in Kensington and Chelsea this year. These 3 people had 3 arrival actions.

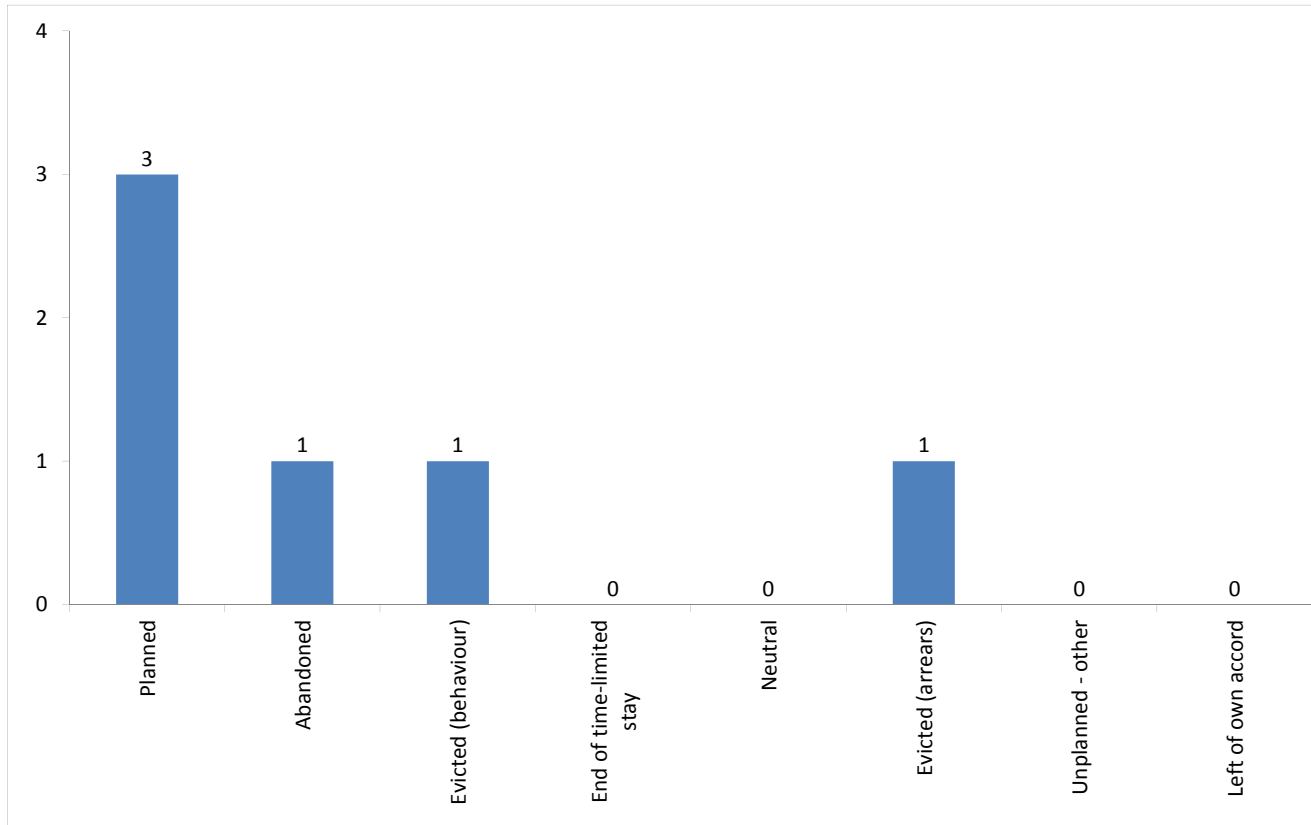
The numbers of people arriving and arrivals are higher than the previous three quarters where no arrivals had been recorded.

Breakdown by accommodation:

Source of referral →		
Accommodation ↓	K & C SIT	Total
St Mungo's - Cromwell Road	2	2
St Mungo's - Redcliffe Gardens	1	1
Total	3	3

10) Departures - planned or unplanned

Departures by whether or not the departure was planned or unplanned



Base: 6

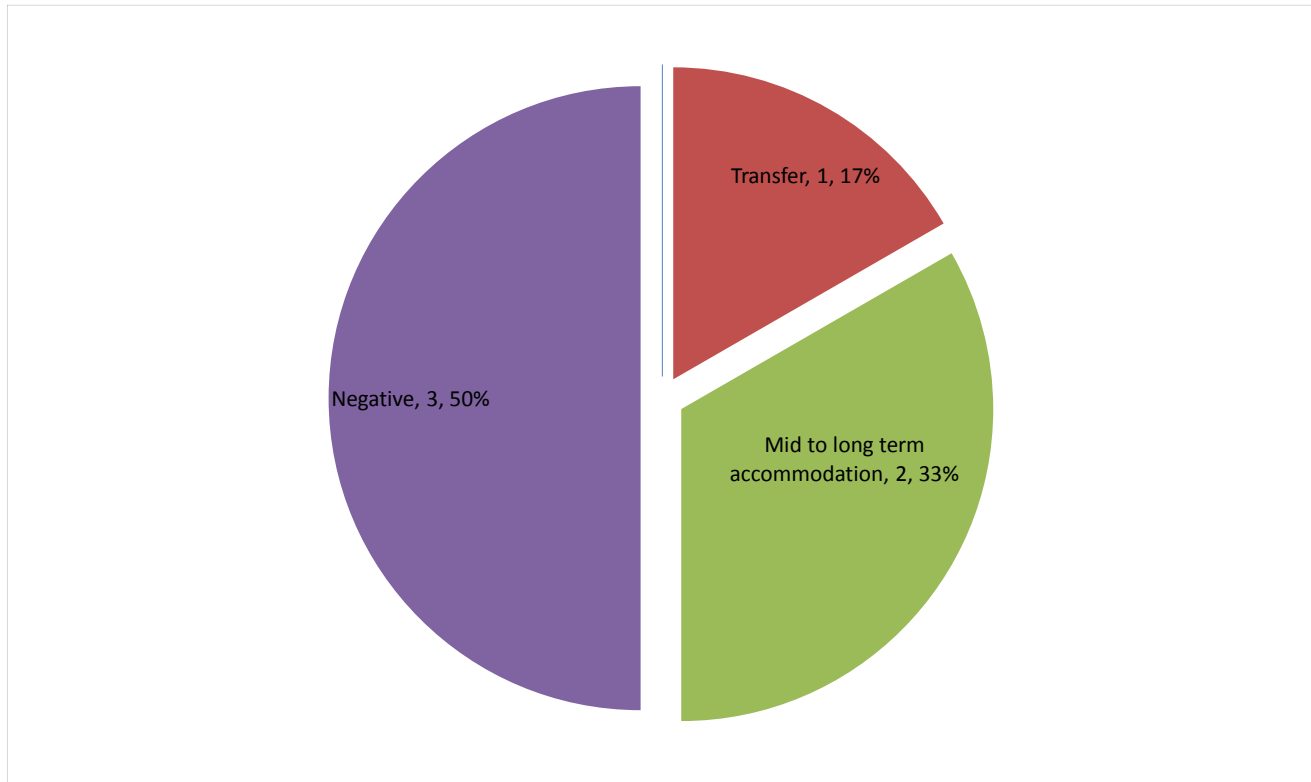
6 people departed from accommodation in Kensington and Chelsea this year. These 6 people had 6 departure actions.

Breakdown by accommodation

Planned/Unplanned →	Accommodation ↓				Total
	Planned	Abandoned	Evicted (behaviour)	Evicted (arrears)	
Look Ahead - Earl's Court	2	1	1	1	5
St Mungo's - Cromwell Road	1				1
Total	3	1	1	1	6

11) Departures - destination on departure

Departure actions by destination on departure



Base: 6

Destination categories on CHAIN	Chart category	Colour
Care home, Clearing House/RSI, Home area, Hospital - long term, LA tenancy (general needs), Long-term accommodation, Previous home, Private rented sector - independent, Private rented sector - supported, RSL tenancy (general needs), Sheltered Housing, Supported Housing	Mid to long term accommodation	Green
Bed & Breakfast, Detox clinic, Hostel, Hostel - another organisation, Hostel - within the organisation, Rehab clinic, Temporary accommodation, Psychiatric hospital, Hospital - NOT long term/acute care	Transfer	Red
Not known, Sleeping rough/returned to streets, Taken into custody	Negative	Purple
Died, Outside London, Staying with family, Staying with friends	Other	Blue

Destination on departure from temporary accommodation	Number	%
Clearing House/RSI	1	17%
Detox clinic	1	17%
Not known	3	50%
RSL tenancy (general needs)	1	17%
Total	6	100%

33% of people left accommodation to move to mid to long-term accommodation, this compares to 42% last quarter.

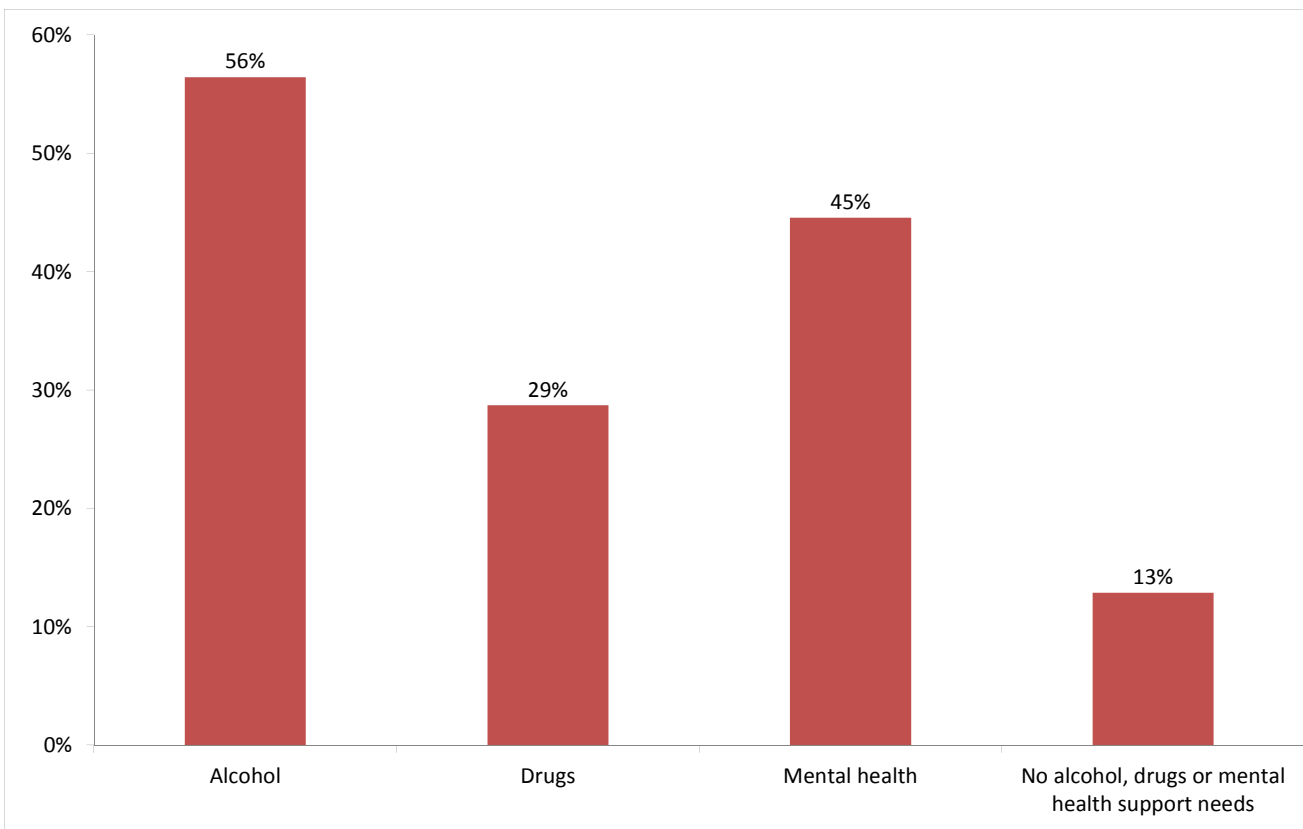
Breakdown by accommodation

Destination Accommodation	Clearing House/RSJ	Detox clinic	Not known	RSL tenancy (general needs)	Total
Look Ahead - Earl's Court	1	1	3		5
St Mungo's - Cromwell Road				1	1
Total	1	1	3	1	6

Client Support Needs/Institutional History

12) Support needs

People contacted by outreach or BBS teams and/or arriving in accommodation in the quarter by support needs



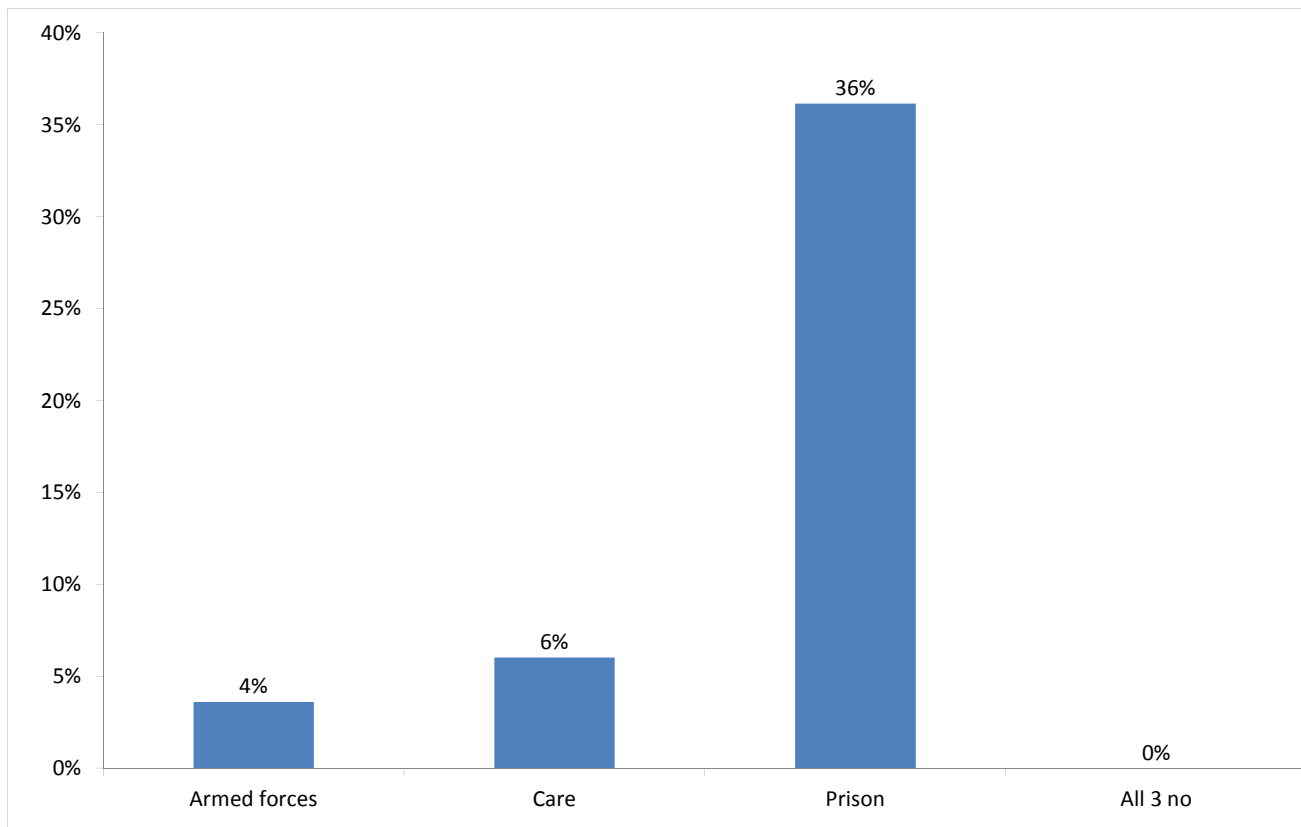
Base: 101 Note that the base figure for this graph excludes clients where all 3 support needs are not known or not recorded (24).

Support Needs	No. of people	%
Alcohol only	21	17%
Drugs only	6	5%
Mental health only	22	18%
Alcohol and drugs	15	12%
Alcohol and mental health	15	12%
Drugs and mental health	2	2%
Alcohol, drugs and mental health	6	5%
All 3 no	13	10%
All 3 not known or not assessed	24	19%
All 3 no, not known or not assessed	1	1%
Total	125	100%

The proportion of people contacted in Kensington and Chelsea with an alcohol, drugs or mental health support need is consistent with the previous two periods.

13) Experience of armed forces, care or prison

People contacted by outreach or BBS teams and/or arriving in accommodation in the quarter by experience of the armed forces, care or prison



Base: 83 Note that the base figure for this graph excludes clients where all 3 institutional histories are not known.

3 people contacted in Kensington and Chelsea this quarter have previously been in the armed forces (3 last quarter).

Nationality	Number	%
UK	2	67%
Non-UK	0	0%
Total **	2	

** Nationality missing for 1 person

5 people contacted in Kensington and Chelsea this quarter have previously been in care (7 last quarter).

30 people contacted in Kensington and Chelsea this quarter have previously been in prison (27 last quarter).

It is possible for someone contacted to have previous experience of more than one institution and so be included in more than one of the above figures. No one contacted in the year has been in care and prison.