



CHAIN
Quarterly Report for
Lambeth
July - September 2011



CHAIN Quarterly report for Lambeth 1st July to 30th September 2011

Contents

Outreach Work

1) Rough sleeping

People seen by outreach or building based (BBS) teams in the quarter - rough sleeping or contacted either on the streets or in services

2) Rough sleeping volume

People seen rough sleeping by number of bedded down contacts during the quarter

3) Nationality of rough sleepers

People seen rough sleeping by outreach or BBS teams during the quarter.

4) People contacted by month

People seen rough sleeping by outreach or building based (BBS) teams by month

5) No booking into accommodation events

People contacted in the quarter with no accommodation events (booking or referrals) by any outreach or BBS team, by total number of street contacts recorded on CHAIN

6) Booking into accommodation and reconnection events

Outreach accommodation (bookings and referrals) and reconnection events achieved in the quarter by type of accommodation

Hostels, assessment centres, rolling shelters and second stage accommodation

7) Arrivals

Temporary accommodation arrivals by accommodation project and source of referral.

8) Departures - destination on departure

Departure actions by destination on departure

9) Departures - reason for leaving

Departures by whether or not the departure was planned or unplanned

Support needs and institutional history

10) Support needs

People contacted by outreach or BBS teams and/or arriving in accommodation in the quarter by support needs

11) Experience of armed forces, care and prison

People contacted by outreach or BBS teams and/or arriving in accommodation in the quarter by experience of the armed forces, care or prison

Wider street population

12) Street activity

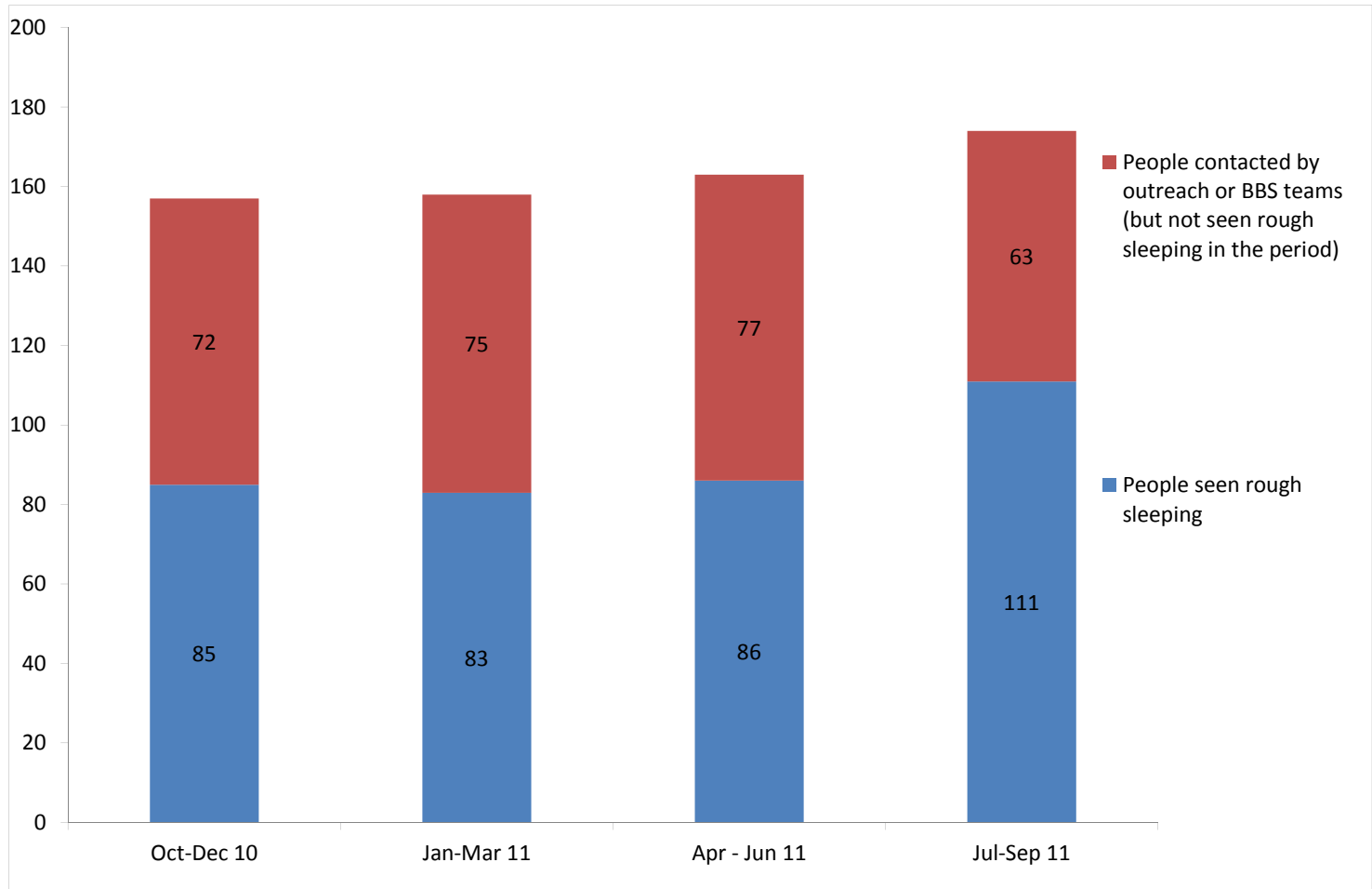
Street population (people who rough sleep and/or engage in a street lifestyle) contacted by outreach who fall into one or more of the street activity categories on CHAIN

CHAIN Quarterly report for Lambeth

Outreach Work

1) Rough sleeping

People seen by outreach or building based (BBS) teams in the quarter - rough sleeping or contacted either on the streets or in services



Oct-Dec 10 base: 157
Jan-Mar 11 base: 158
Apr-Jun 11 base: 163
Jul-Sep 11 base: 174

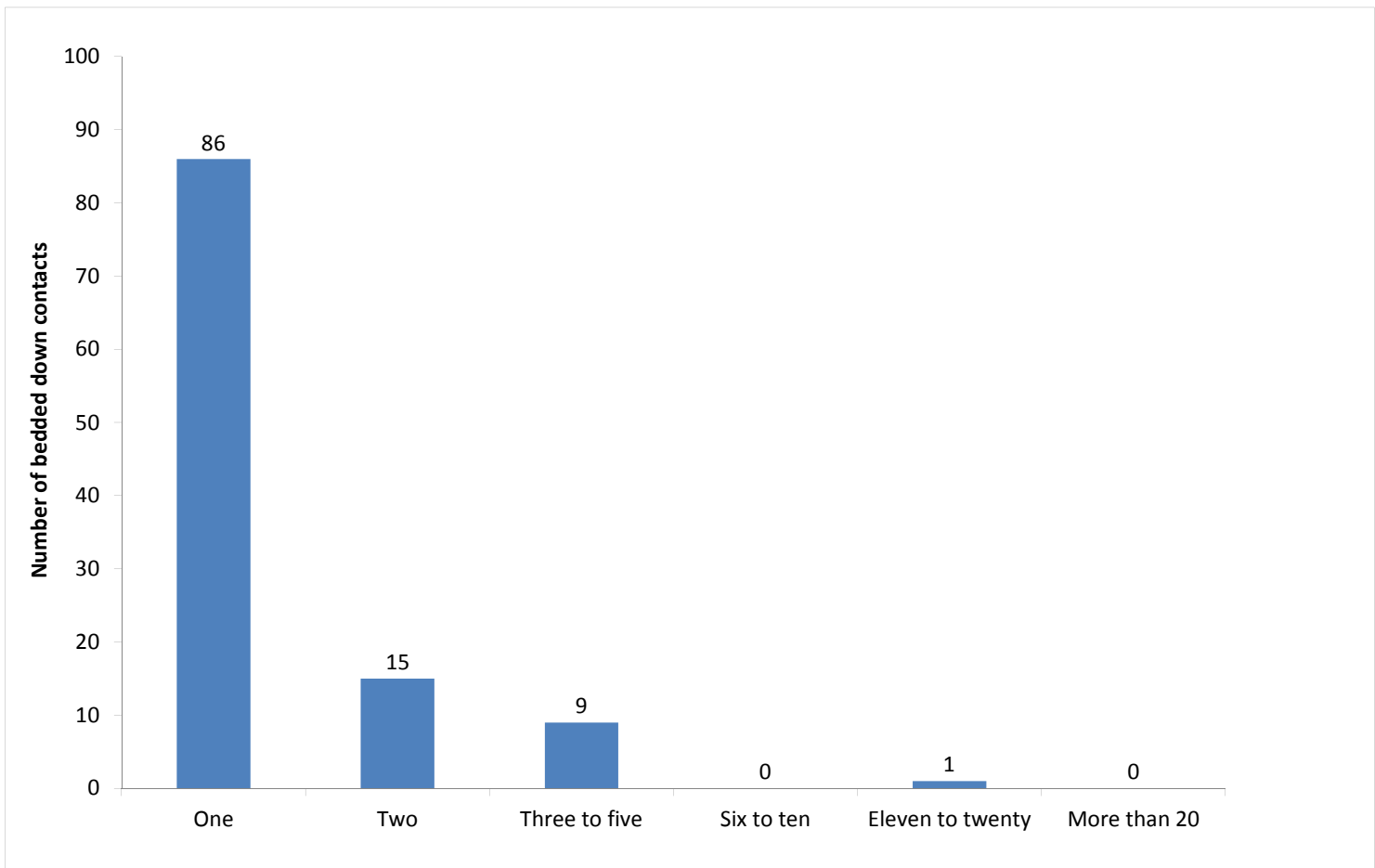
174 verified rough sleepers were contacted by services in Lambeth during the quarter. This is an increase from 163 last quarter and compares to 197 in the same quarter last year.

Of these 174, 111 had a bedded down street contact in the quarter and so were known to have slept rough in Lambeth during the quarter. The number sleeping rough this quarter has increased by 29%.

72 people were seen rough sleeping for the first time this quarter (flow). This compares to 38 in the previous quarter, an increase of 89%.

2) Rough sleeping volume

People seen rough sleeping by number of bedded down contacts during the quarter



Base: 111

Of the 111 people seen rough sleeping this quarter, 86 only had a single bedded down street contact.

Of the 111 people seen bedded down, 23 were from CEE countries and seen only once during the period.

NB CEE nationals often cannot be offered the same service as other people due to benefit restrictions.

3) Nationality of rough sleepers

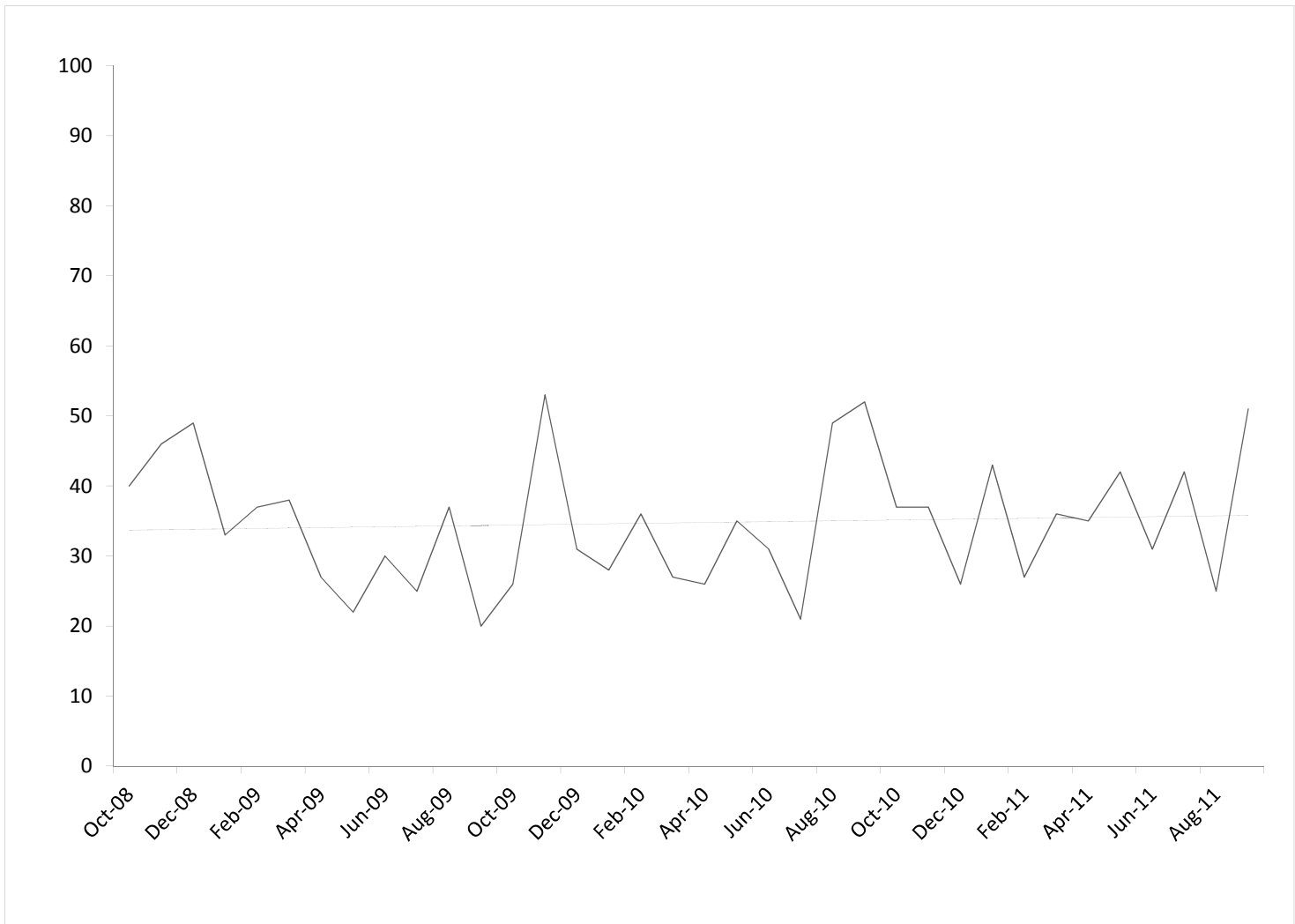
People seen rough sleeping by outreach or BBS teams during the quarter.

Nationality	Oct-Dec	%	Jan-Mar	%	Apr - Jun	%	Jul-Sept	%
UK	37	45%	35	44%	43	51%	48	44%
Ireland (Republic of)	1	1%	2	3%	4	5%	2	2%
Portugal	5	6%	4	5%	2	2%	4	4%
Bulgaria	0	0%	0	0%	0	0%	0	0%
Czech Republic	2	2%	3	4%	0	0%	0	0%
Estonia	0	0%	0	0%	0	0%	0	0%
Hungary	1	1%	0	0%	0	0%	1	1%
Latvia	2	2%	3	4%	4	5%	3	3%
Lithuania	5	6%	4	5%	3	4%	4	4%
Poland	14	17%	9	11%	9	11%	15	14%
Romania	0	0%	0	0%	1	1%	13	12%
Slovenia	0	0%	0	0%	0	0%	0	0%
Slovakia	3	4%	6	8%	2	2%	0	0%
Central and East European (CEE) sub-total	27	33%	25	32%	19	22%	36	33%
other Europe	3	4%	4	5%	6	7%	5	5%
Eritrea	0	0%	0	0%	2	2%	3	3%
Africa	4	5%	5	6%	4	5%	10	9%
America	1	1%	3	4%	2	2%	1	1%
Asia	4	5%	1	1%	3	4%	0	0%
Australasia	0	0%	0	0%	0	0%	0	0%
<i>Missing</i>	<i>1</i>		<i>2</i>		<i>0</i>		<i>2</i>	
<i>Not known</i>	<i>2</i>		<i>2</i>		<i>1</i>		<i>0</i>	
Total	85		83		86		111	
Total**	82		79		85		109	

**This total excludes those people seen rough sleeping where their nationality is not known

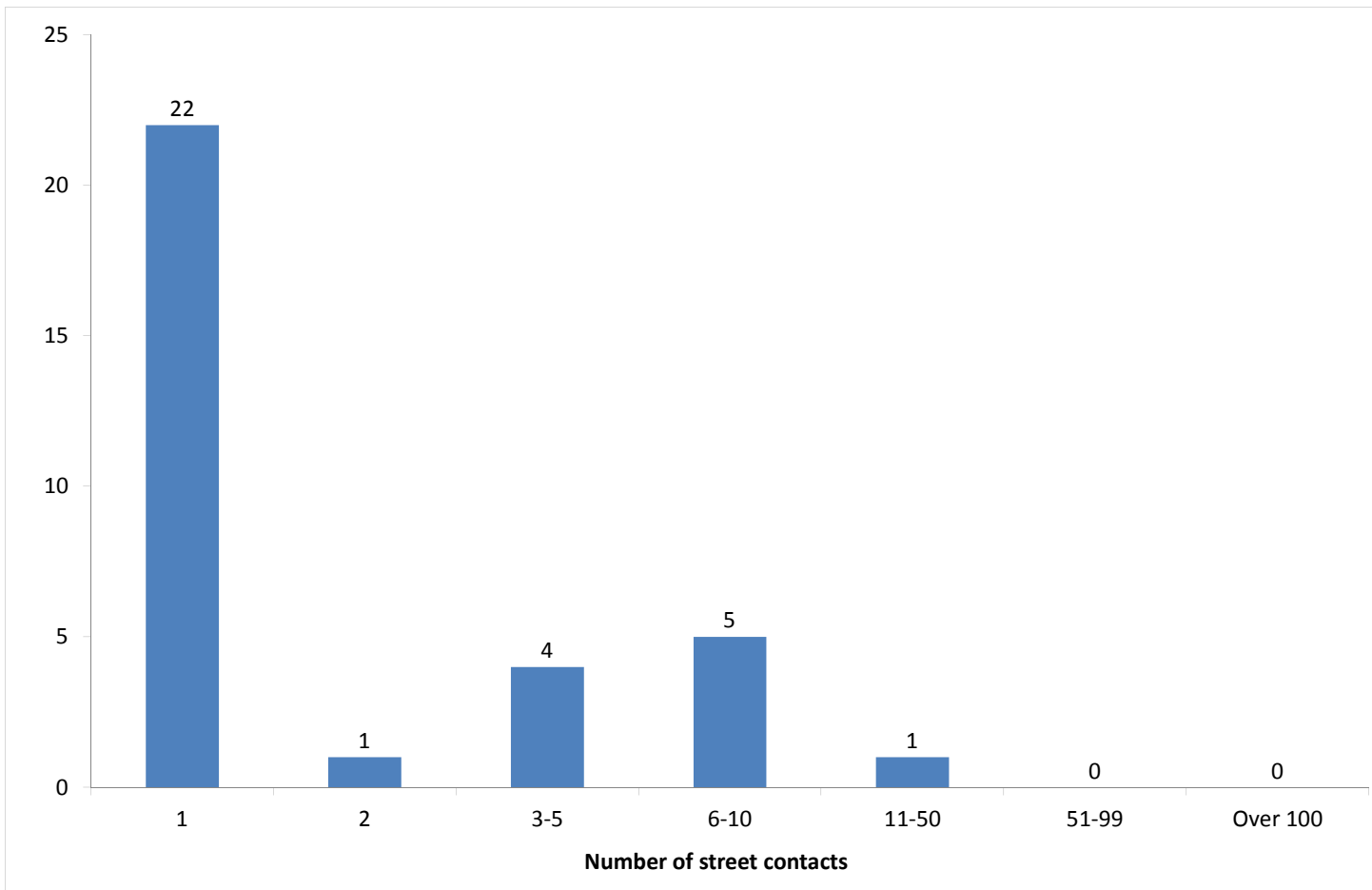
4) People contacted by month

People seen rough sleeping by outreach or building based (BBS) teams by month



5) No booking into accommodation events

People contacted in the quarter with no accommodation events (booking or referrals) by any outreach or BBS team, by total number of street contacts recorded on CHAIN



Base: 33

33 (19%) verified rough sleepers contacted across Lambeth this quarter have never had a booking in action recorded on CHAIN. This is consistent with the last three quarters.

31 of these people have slept rough in the quarter, which is 28% of all people sleeping rough this quarter.

22 (67%) of the people who have never had a booking in action recorded on CHAIN have only ever had 1 street contact recorded.

6) Booking into accommodation and reconnection events

Outreach accommodation (bookings and referrals) and reconnection events achieved in the quarter by type of accommodation

Accommodation type	Jul-Sep 11	%	Apr-Jun 11	%
Assessment centre	0	0%	0	0%
Bed & breakfast	7	12%	10	20%
Clinic/Detox/Rehab	2	4%	0	0%
Night Centre	0	0%	0	0%
Rolling shelter	21	37%	17	33%
Hostel	15	26%	15	29%
Other temporary	0	0%	0	0%
Second-stage accommodation	0	0%	1	2%
St Mungo's complex needs	1	2%	1	2%
St Mungo's semi-independent	0	0%	0	0%
Clearing House/RSI	0	0%	0	0%
LA tenancy (general needs)	0	0%	0	0%
Private rented sector	0	0%	0	0%
Private rented sector - independent	7	12%	0	0%
Private rented sector - with some floating support/support	1	2%	1	2%
RSL tenancy (general needs)	0	0%	0	0%
Sheltered housing	0	0%	0	0%
Supported housing	2	4%	2	4%
Other long-term accommodation	0	0%	0	0%
Bookings into accommodation total	56	98%	47	92%
Return to home area	0	0%	2	4%
Seeking work	0	0%	0	0%
Move to area for friends/family	1	2%	1	2%
Move to area with appropriate services	0	0%	1	2%
Other	0	0%	0	0%
Reconnections total	1	2%	4	8%
TOTAL	57	100%	51	100%

Outreach and BBS teams across Lambeth succeeded in reconnecting or booking into accommodation 37 people, 21% of the 174 people contacted during the quarter.

This is consistent with last quarter, but lower than previously: Oct-Dec 2010, 43%; Jan-Mar, 38%; Apr-Jun, 26%.

36 people had a total of 56 booking in events. This indicates that individuals can be booked into accommodation (the same type or different) more than once in the quarter.

9 people were booked into long-term accommodation. This is higher than previous quarters: Oct-Dec 2010, 3; Jan-Mar, 6; Apr-Jun, 3.

14 people were booked into hostel accommodation. This is consistent with last quarter but lower than previously: Oct-Dec 2010, 48; Jan-Mar, 36; Apr-Jun, 14.

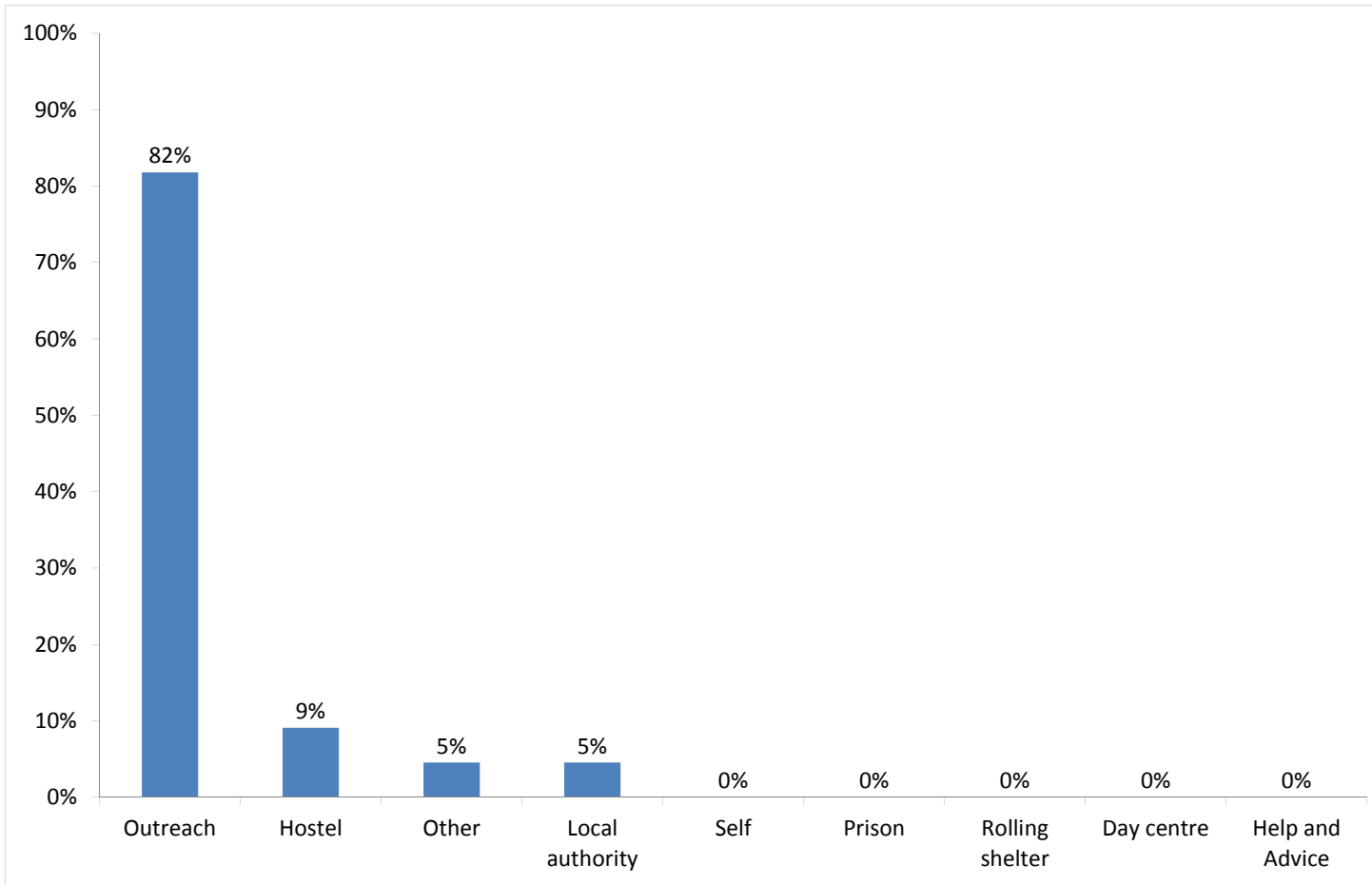
Outreach and BBS teams across Lambeth achieved a confirmed reconnection with 1 person they contacted this quarter. This is 1% of the people contacted by outreach or BBS teams this quarter.

1 confirmed reconnection event was recorded by outreach and BBS teams for a verified rough sleeper this quarter. There were no such actions for the wider street population (people not seen sleeping rough).

Temporary Accommodation: hostels, assessment centres, rolling shelters and second stage

7) Arrivals

Temporary accommodation arrivals by accommodation project and source of referral.



Base: 22

22 people arrived at accommodation in Lambeth this year. These 22 people had 22 arrival actions.

This is consistent with last quarter, but lower than previously: Oct-Dec 2010, 63; Jan-Mar, 47; Apr-Jun, 15.

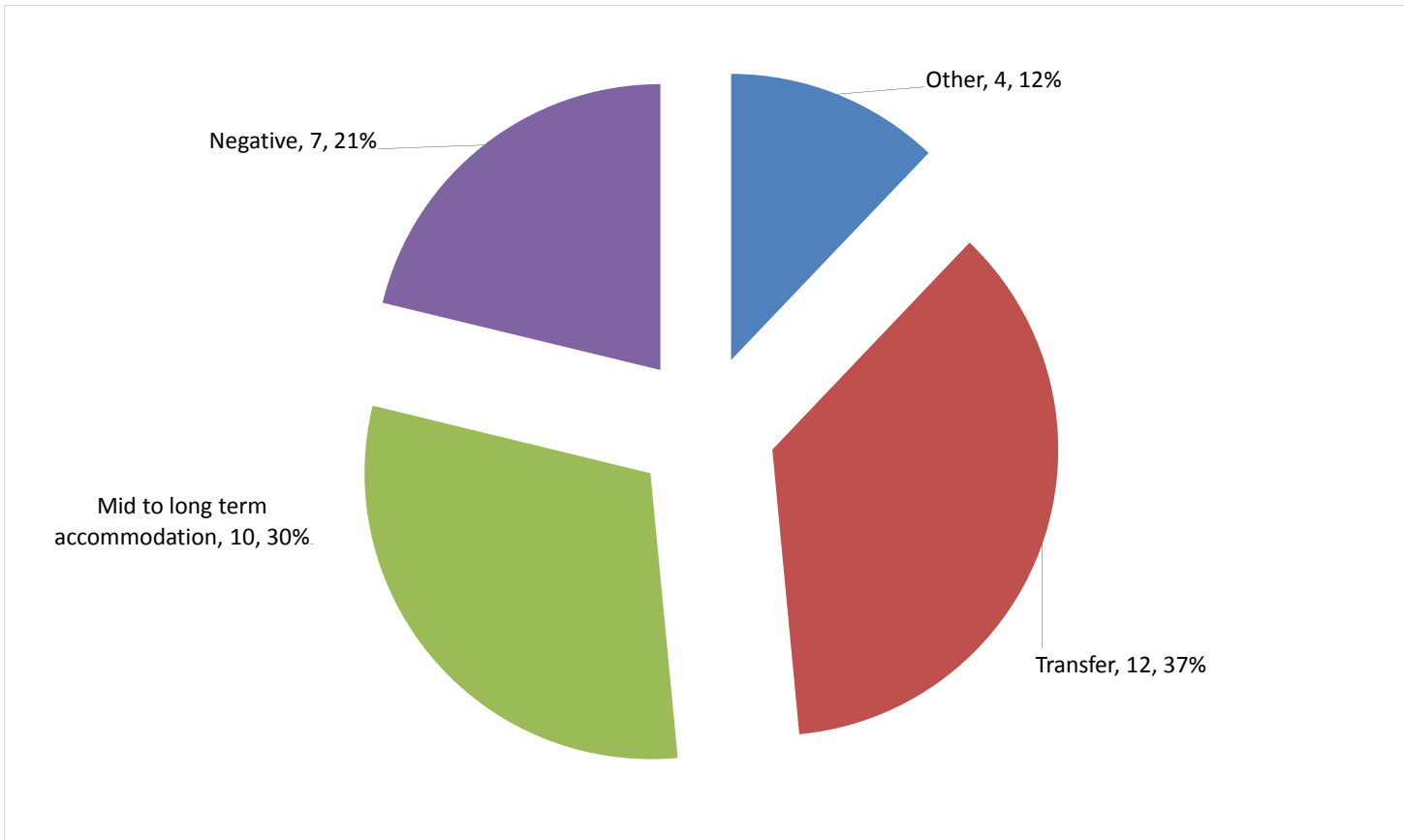
The proportion of arrivals to accommodation in Lambeth that were referred by outreach or BBS teams is higher than last quarter but consistent with previous periods: Oct-Dec 2010, 84%; Jan-Mar, 83%; Apr-Jun, 60%.

Breakdown by accommodation:

Source of referral → Accommodation ↓	BBS - Passage	Lambeth SORT	Southwark SPOT	London Street Rescue	London Reconnect	Hostel	Local authority (other referral source)	Total
Equinox - Brook Drive			1		3			4
St Mungo's - Palace Road		1						1
Thames Reach - Graham House	2	9		1		2	1	15
Thames Reach - Lambeth High Street							1	1
Thames Reach - Stamford Street		1						1
Total	2	11	1	1	3	2	1	22

8) Departures - destination on departure

Departure actions by destination on departure



Destination categories on CHAIN	Chart category	Colour
Care home, Clearing House/RSI, Home area, Hospital - long term, LA tenancy (general needs), Long-term accommodation, Previous home, Private rented sector - independent, Private rented sector - supported, RSL tenancy (general needs), Sheltered Housing, Supported Housing	Mid to long term accommodation	Green
Bed & Breakfast, Detox clinic, Hostel, Hostel - another organisation, Hostel - within the organisation, Rehab clinic, Temporary accommodation, Psychiatric hospital, Hospital - NOT long term/acute care	Transfer	Red
Not known, Sleeping rough/returned to streets, Taken into custody	Negative	Purple
Died, Outside London, Staying with family, Staying with friends	Other	Blue

Destination on departure from temporary accommodation	Number	%
Care home	2	6%
Detox clinic	1	3%
Died	2	6%
Hospital - NOT long term/acute care	1	3%
Hostel - another organisation	6	18%
Hostel - within the organisation	4	12%
LA tenancy (general needs)	1	3%
Not known	4	12%
Private rented sector - with some floating support/support	1	3%
Returned to home country (CEE)	2	6%
RSL tenancy (general needs)	4	12%
Sleeping rough/Returned to streets	3	9%
Staying with family	1	3%
Staying with friends	1	3%
Total	33	100%

33 people departed from accommodation in Lambeth this year. These 33 people had 33 departure actions.

30% of people left accommodation to move to another hostel. This is consistent with previous quarters, and with the proportion across all boroughs this quarter.

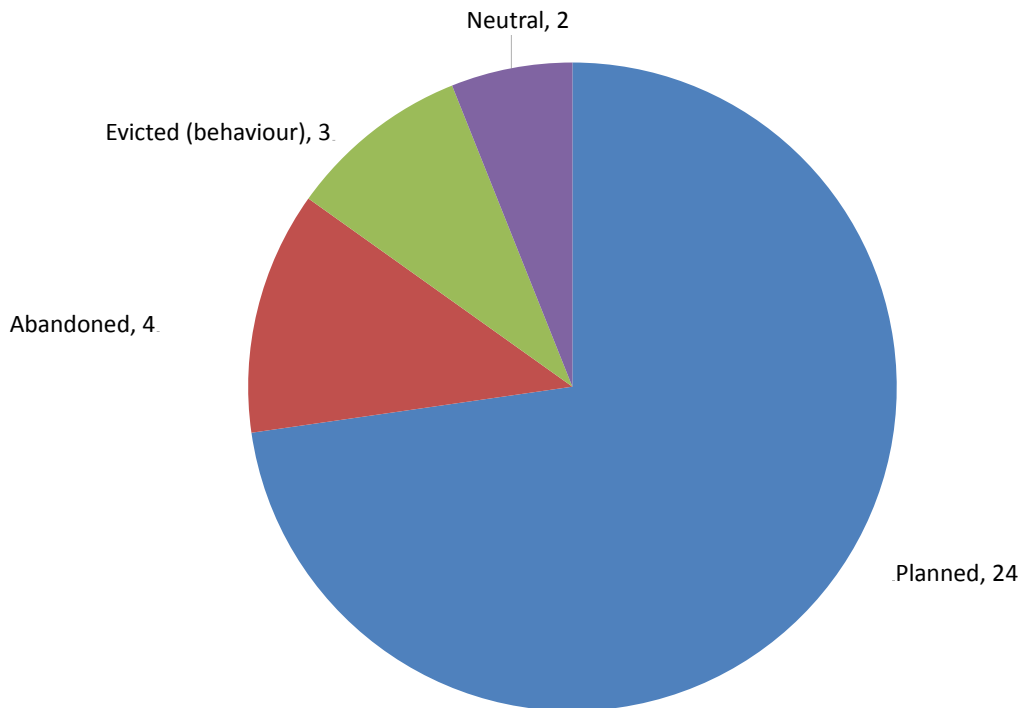
30% of people left accommodation to move to mid to long-term accommodation. This is consistent with previous quarters, and with the proportion across all boroughs this quarter.

Breakdown by accommodation

Destination Accommodation	Care home	Detox clinic	Died	Hospital - NOT long term/acute	Hostel - another organisation	Hostel - within the organisation	LA tenancy (general needs)	Not known	Private rented sector - with some	Returned to home country (CEE)	RSL tenancy (general needs)	Sleeping rough/Returned to	Staying with family	Staying with friends	Total
Equinox - Brook Drive								1		2					3
St Mungo's - Auckland Hill								1							1
St Mungo's - Cedars Road		1			4	1					4	2			12
St Mungo's - St Gothard's Road					1	1									2
St Mungo's - Palace Road						1									1
St Mungo's - Wix Lane													1		1
Thames Reach - Graham House	1		2	1	1	1		2				1		1	10
Thames Reach - Lambeth High Street	1						1								2
Thames Reach - Stamford Street									1						1
Total	2	1	2	1	6	4	1	4	1	2	4	3	1	1	33

9) Departures - reason for leaving

Departures by whether or not the departure was planned or unplanned



Base: 33

33 people departed from accommodation in Lambeth this quarter. These 33 people had 33 departure actions.

This is lower than previous quarters: Oct-Dec 2010, 57; Jan-Mar, 49; Apr-Jun, 41.

73% of departures were due to a planned move. This is consistent with previous quarters, and with the proportion across all boroughs this quarter.

12% of departures were due to abandonments. This is consistent with previous quarters, and with the proportion across all boroughs this quarter.

9% of departures were due to evictions. This is lower than the last two quarters, but consistent with earlier periods: Oct-Dec 2010, 7%; Jan-Mar, 18%; Apr-Jun, 17%.

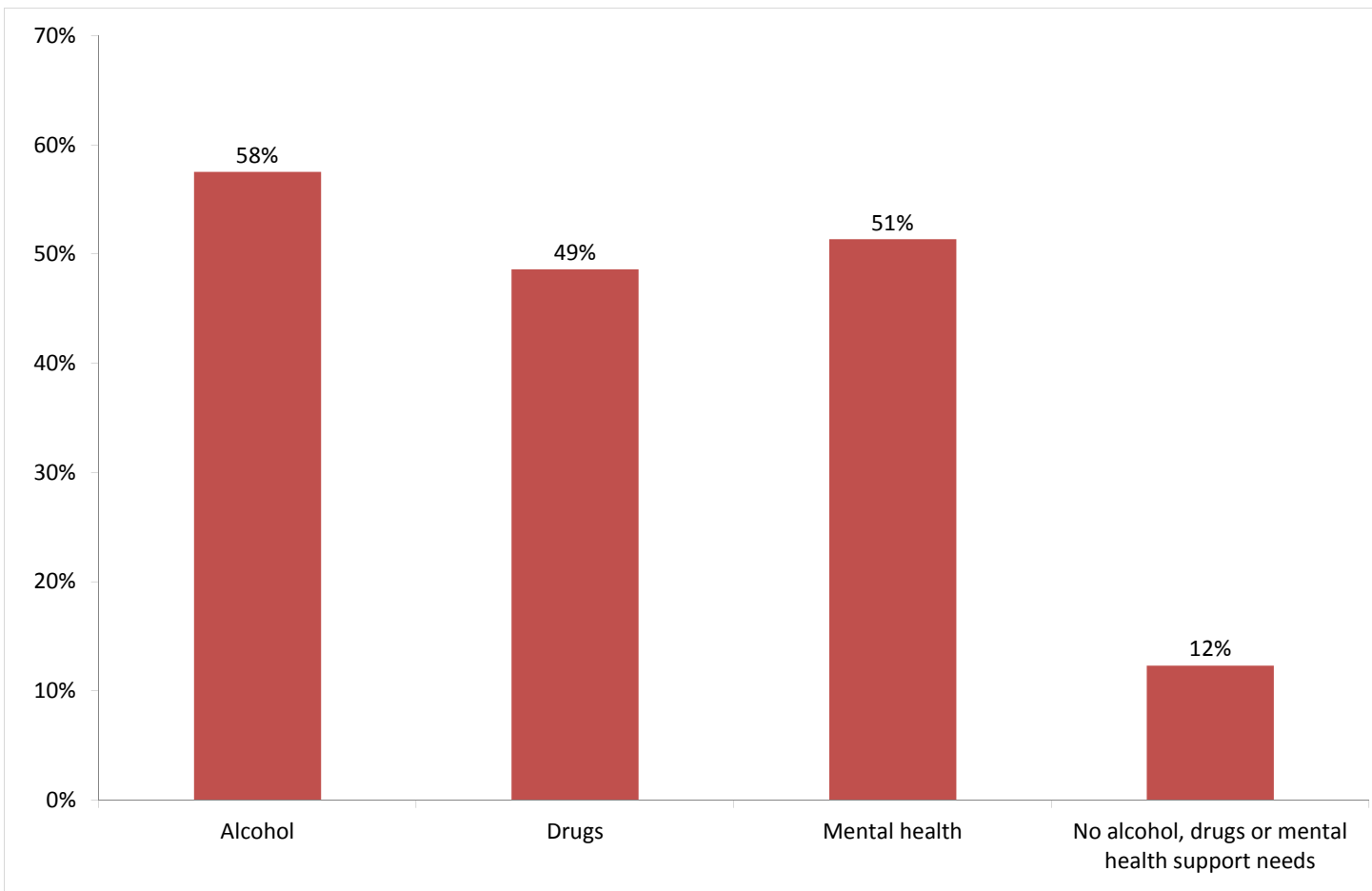
Breakdown by accommodation

 Planned/Unplanned Accommodation 	Planned	Abandoned	Evicted (behaviour)	Neutral	Total
Equinox - Brook Drive	2	1			3
St Mungo's - Auckland Hill		1			1
St Mungo's - Cedars Road	10		2		12
St Mungo's - St Gothard's Road	2				2
St Mungo's - Wix Lane	1				1
St Mungo's - Palace Road	1				1
Thames Reach - Graham House	5	2	1	2	10
Thames Reach - Lambeth High Street	2				2
Thames Reach - Stamford Street	1				1
Total	24	4	3	2	33

Client Support Needs

10) Support needs

People contacted by outreach or BBS teams and/or arriving in accommodation in the quarter by support needs



Base: 146 Note that the base figure for this graph excludes clients where all 3 support needs are not known or not recorded (49).

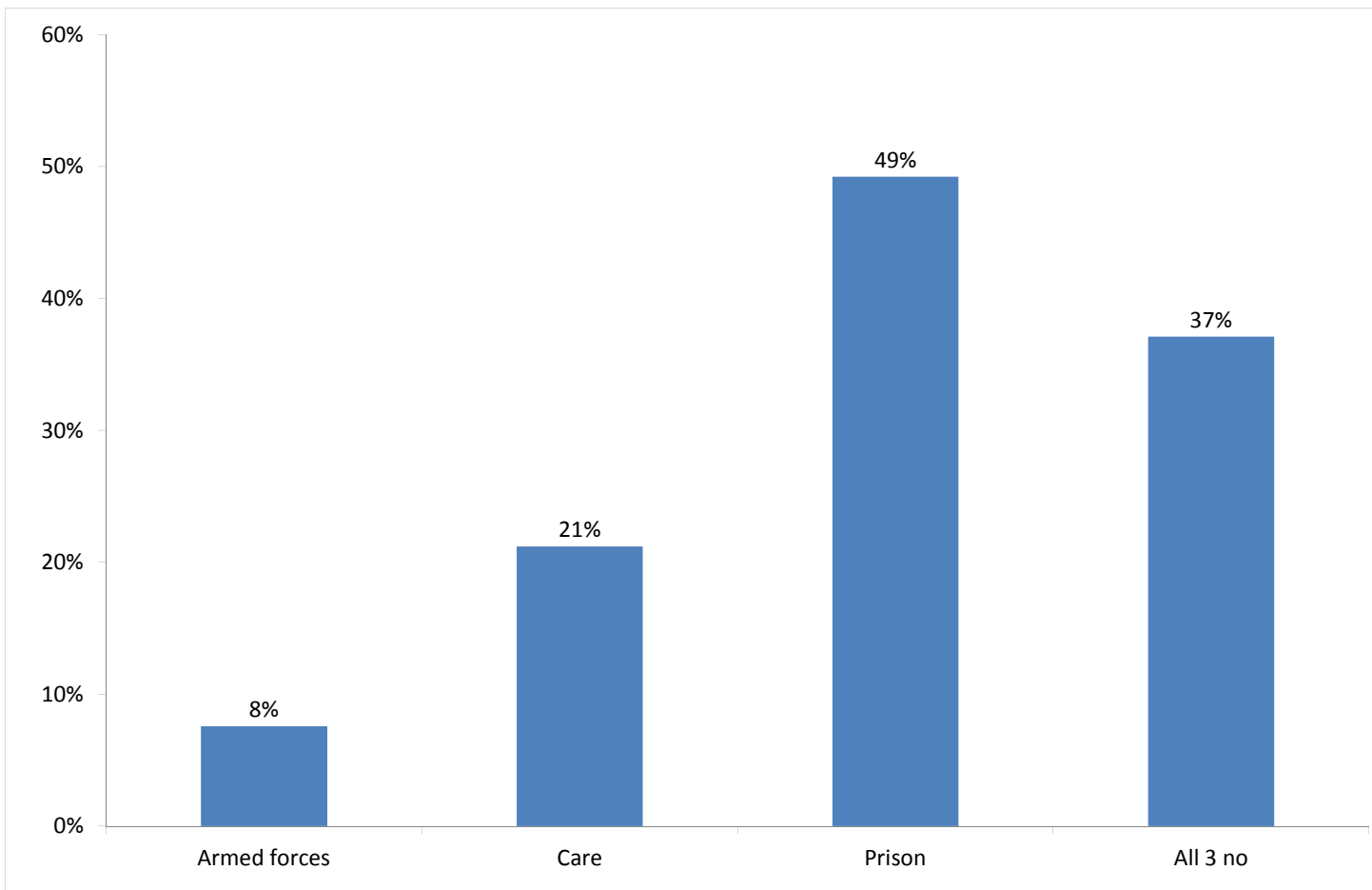
Support Needs	No. of people	%
Alcohol only	18	9%
Drugs only	19	10%
Mental health only	13	7%
Alcohol and drugs	15	8%
Alcohol and mental health	25	13%
Drugs and mental health	11	6%
Alcohol, drugs and mental health	26	13%
All 3 no	18	9%
All 3 not known or not assessed	49	25%
All 3 no, not known or not assessed	1	1%
Total	195	100%

The proportion of people with mental health support needs has been rising: Oct-Dec 2010, 29%; Jan-Mar, 36%; Apr-Jun, 44%.

The proportion of people with a drug support need is higher than the proportion across all boroughs this quarter, 36%.

11) Experience of armed forces, care and prison

People contacted by outreach or BBS teams and/or arriving in accommodation in the quarter by experience of the armed forces, care or prison



Base: 132 Note that the base figure for this graph excludes clients where all 3 institutional histories are not known.

10 people contacted in Lambeth this quarter have previously been in the armed forces (14 last quarter).

Of these, 8 people were seen rough sleeping in the same period.

Nationality	Number	% of people seen rough sleeping*
UK	5	7%
Non-UK	3	4%
Total	8	11%

28 people contacted in Lambeth this quarter have previously been in care (22 last quarter).

65 people contacted in Lambeth this quarter have previously been in prison (62 last quarter).

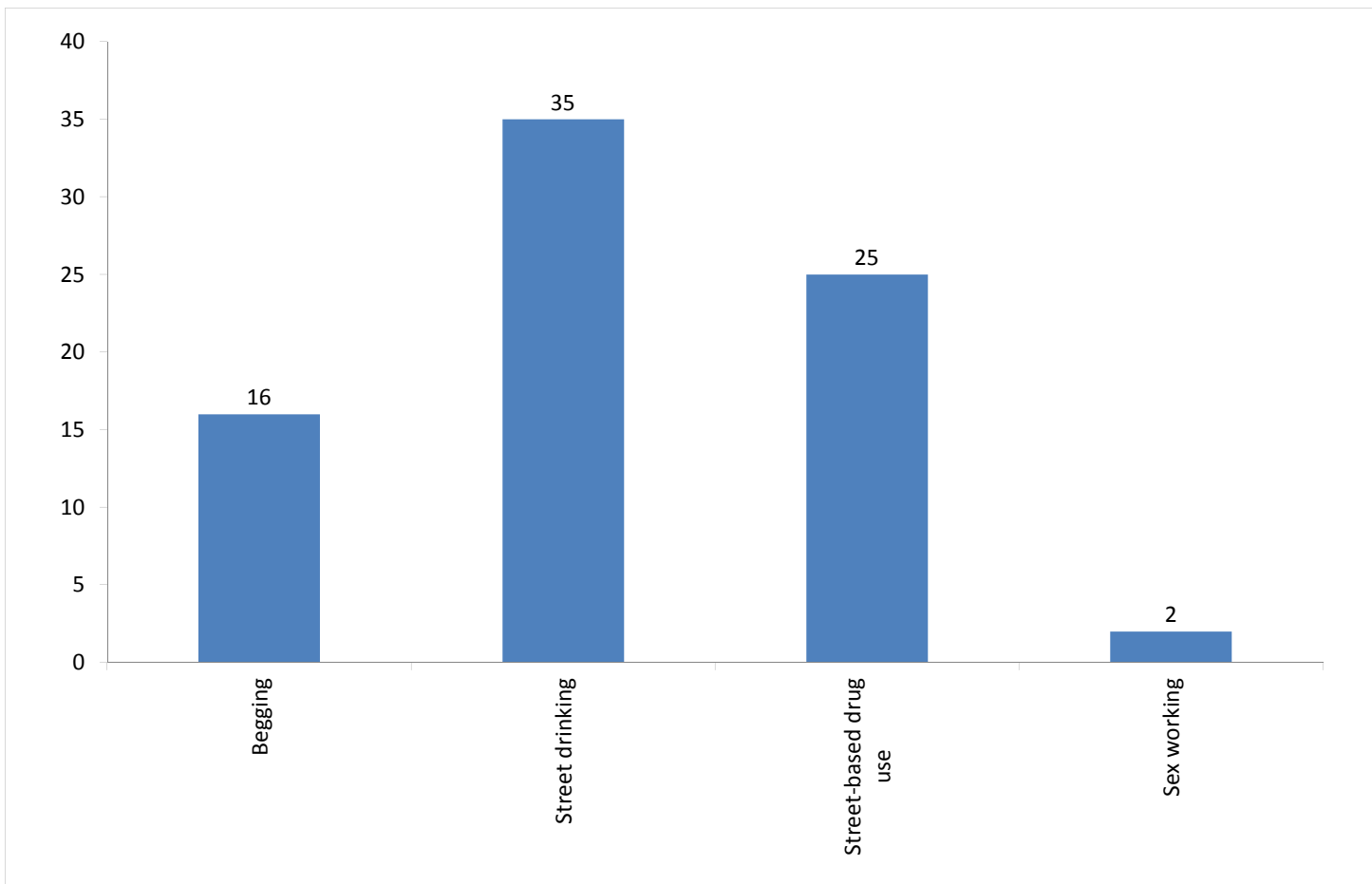
It is possible for someone contacted to have previous experience of more than one institution and so be included in more than one of the above figures. 24 people contacted in the year have been in care and prison.

The proportion of people contacted in Lambeth with previous experience of the armed forces, care or prison is consistent with previous quarters, and with the proportion across all boroughs this quarter.

*Base: People seen rough sleeping in the period who have been assessed for armed forces, care or prison: 72

12) Street activity

Street population (people who rough sleep and/or engage in a street lifestyle) contacted by outreach who fall into one or more of the street activity categories on CHAIN



Base: 55

Of the 174 verified rough sleepers contacted this quarter, 55 (32%) have been assessed as engaging in one or more street activities.

Some of these people contacted this quarter have been seen engaging in more than one type of street activity at some point.

In addition to the 174 verified rough sleepers contacted in the quarter by outreach or BBS teams, 11 people who are considered vulnerable but have not been seen rough sleeping were also contacted. Of these:

1 was booked into accommodation;

6 were recorded as having arrived at accommodation reporting to CHAIN.