



CHAIN
Quarterly Report for
City of London
October - December 2010



CHAIN Quarterly report for City of London 1st October to 31st December 2010

Contents

Outreach Work

1) Rough sleeping

People seen by outreach or building based (BBS) teams in the quarter - rough sleeping or contacted either on the streets or in services

2) Rough sleeping volume

People seen rough sleeping by number of bedded down contacts during the quarter

3) Nationality of rough sleepers

People seen rough sleeping by outreach or BBS teams during the quarter

4) People contacted by month

People seen rough sleeping by outreach or building based (BBS) teams by month

5) No booking into accommodation events

People contacted in the quarter with no accommodation events (booking or referrals) by any outreach or BBS team, by total number of street contacts recorded on CHAIN

6) Accommodation and reconnection events (Outreach)

Outreach accommodation (bookings and referrals) and reconnection events achieved in the quarter by type of accommodation

Wider street population

7) Street activity

Street population (people who rough sleep and/or engage in a street lifestyle) contacted by outreach who fall into one or more of the street activity categories on CHAIN

Hostels, assessment centres, rolling shelters and second stage accommodation

8) Arrivals

Temporary accommodation arrivals by accommodation project and source of referral.

9) Departures - destination on departure

Departure actions by destination on departure

Support needs, experience of armed forces, care and prison, and wider street population

10) Support needs

People contacted by outreach or BBS teams and/or arriving in accommodation in the quarter by support needs

11) Experience of armed forces, care or prison

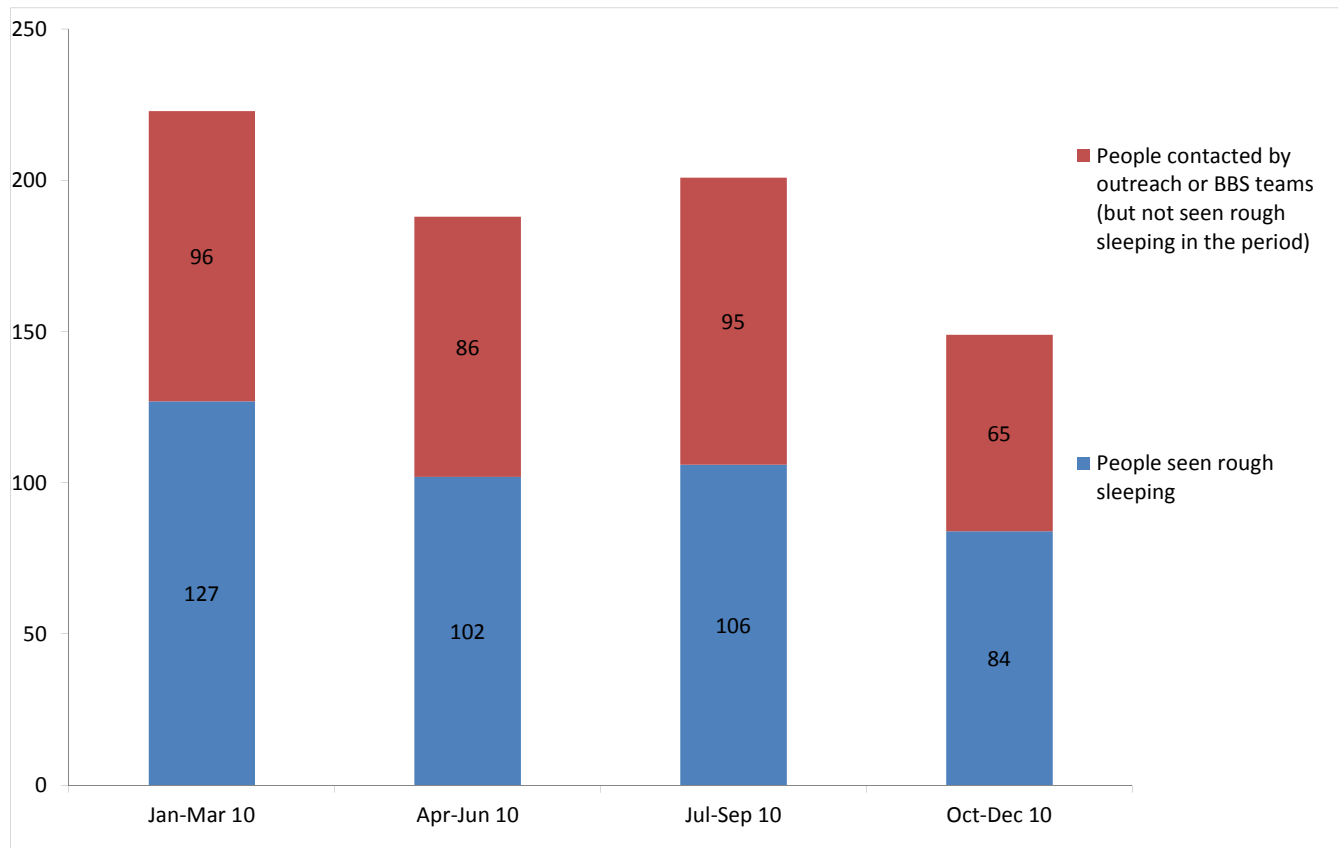
People contacted by outreach or BBS teams and/or arriving in accommodation in the quarter by experience of the armed forces, care or prison

CHAIN Quarterly report for City of London

Outreach Work

1) Rough sleeping

People seen by outreach or building based (BBS) teams in the quarter - rough sleeping or contacted either on the streets or in services



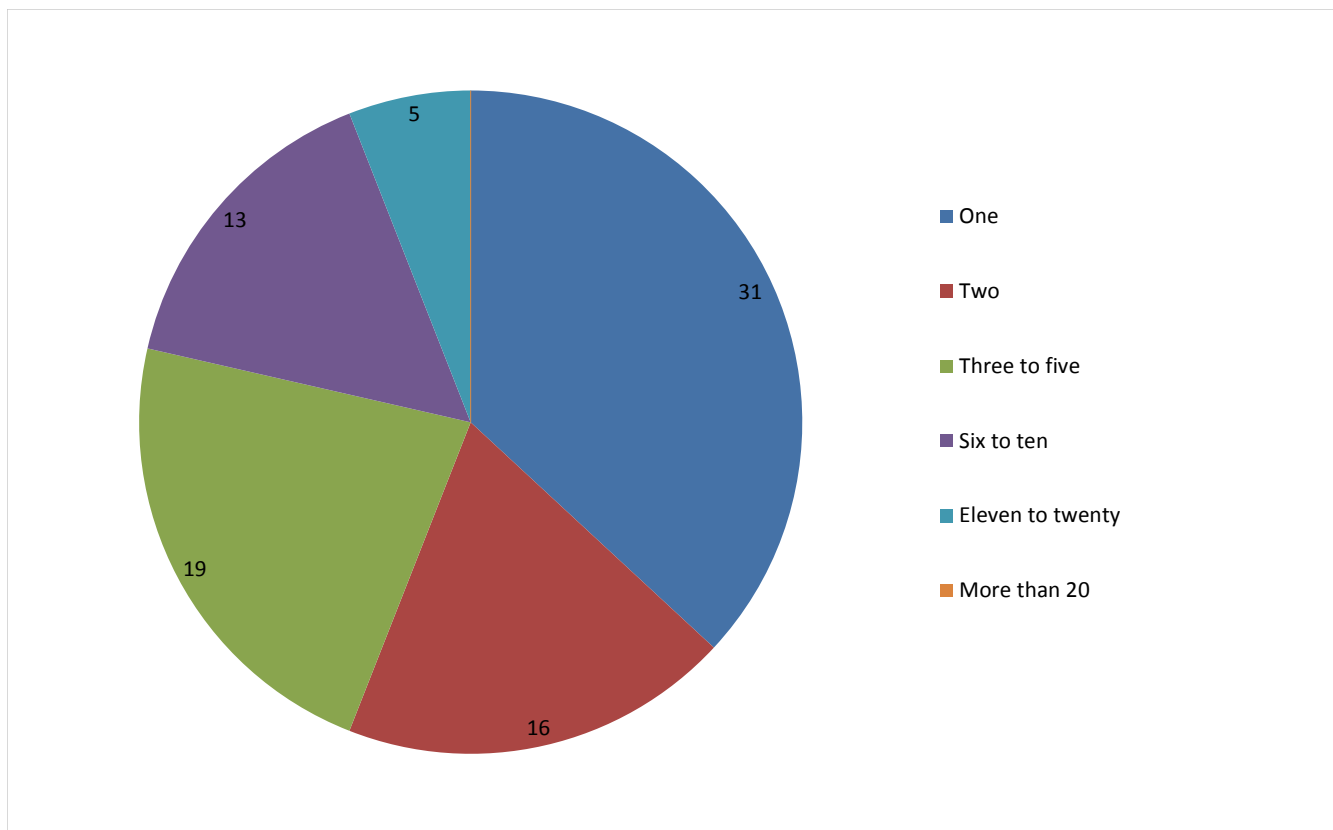
Jan-Mar 10 base: 223
Apr-Jun 10 base: 188
Jul-Sep 10 base: 201
Oct-Dec 10 base: 149

149 verified rough sleepers were contacted by services in the City of London during the quarter. This is a decrease from 201 last quarter and compares to 221 in the same quarter last year.

Of these 149, 84 had a bedded down street contact in the quarter and so were known to have slept rough in the City of London during the quarter. The number sleeping rough this quarter has decreased by 21%.

2) Rough sleeping volume

People seen rough sleeping by number of bedded down contacts during the quarter



Base: 84

Of the 84 people seen rough sleeping this quarter, 31 only had a single bedded down street contact.

Of the 84 people seen bedded down, 8 were from CEE countries and seen only once during the period.

NB CEE nationals often cannot be offered the same service as other people due to benefit restrictions.

3) Nationality of rough sleepers

People seen rough sleeping by outreach or BBS teams during the quarter

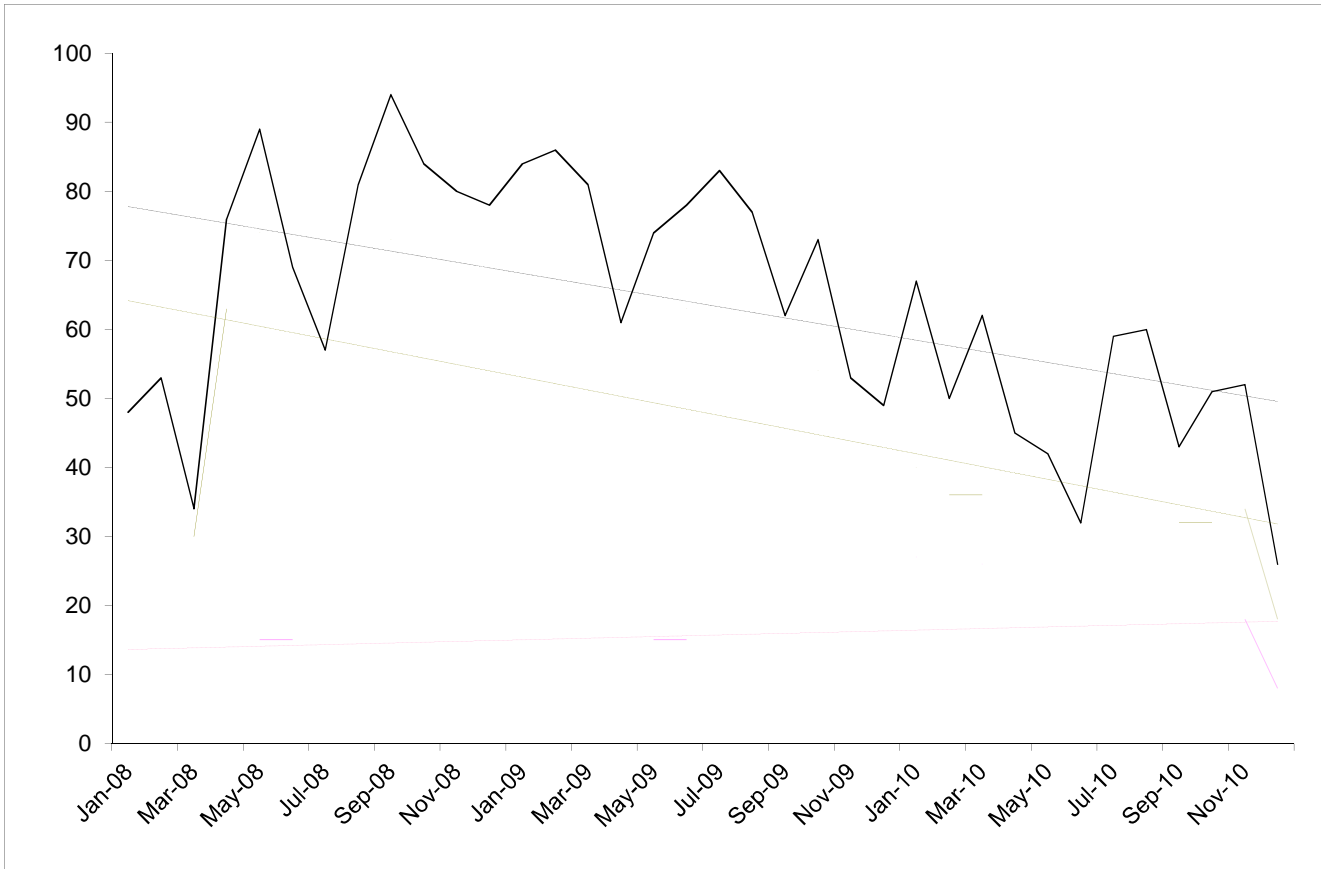
Nationality	Apr-Jun	%	Jul-Sep	%	Oct-Dec	%
UK	28	43%	46	50%	34	44%
Ireland (Republic of)	4	6%	3	3%	3	4%
Bulgaria	1	2%	1	1%	1	1%
Czech Republic	0	0%	1	1%	0	0%
Estonia	1	2%	1	1%	0	0%
Hungary	0	0%	0	0%	1	1%
Latvia	2	3%	1	1%	3	4%
Lithuania	10	15%	3	3%	4	5%
Poland	9	14%	18	20%	20	26%
Romania	4	6%	9	10%	3	4%
Slovenia	0	0%	0	0%	0	0%
Slovakia	0	0%	0	0%	1	1%
Central and East European (CEE) sub-total	27	42%	34	37%	33	42%
other Europe	4	6%	6	7%	5	6%
Africa	1	2%	1	1%	1	1%
America	0	0%	0	0%	0	0%
Asia	1	2%	2	2%	2	3%
Australasia	0	0%	0	0%	0	0%
<i>Missing</i>	<i>6</i>		<i>7</i>		<i>3</i>	
<i>Not known</i>	<i>0</i>		<i>0</i>		<i>3</i>	
Total	71		99		84	
Total**	65		92		78	

Base: 78 Note that the base figure for this graph excludes clients where the nationality is missing or not known (6).

**This total excludes those people seen rough sleeping where their nationality is not known

4) People contacted by month

People seen rough sleeping by outreach or building based (BBS) teams by month



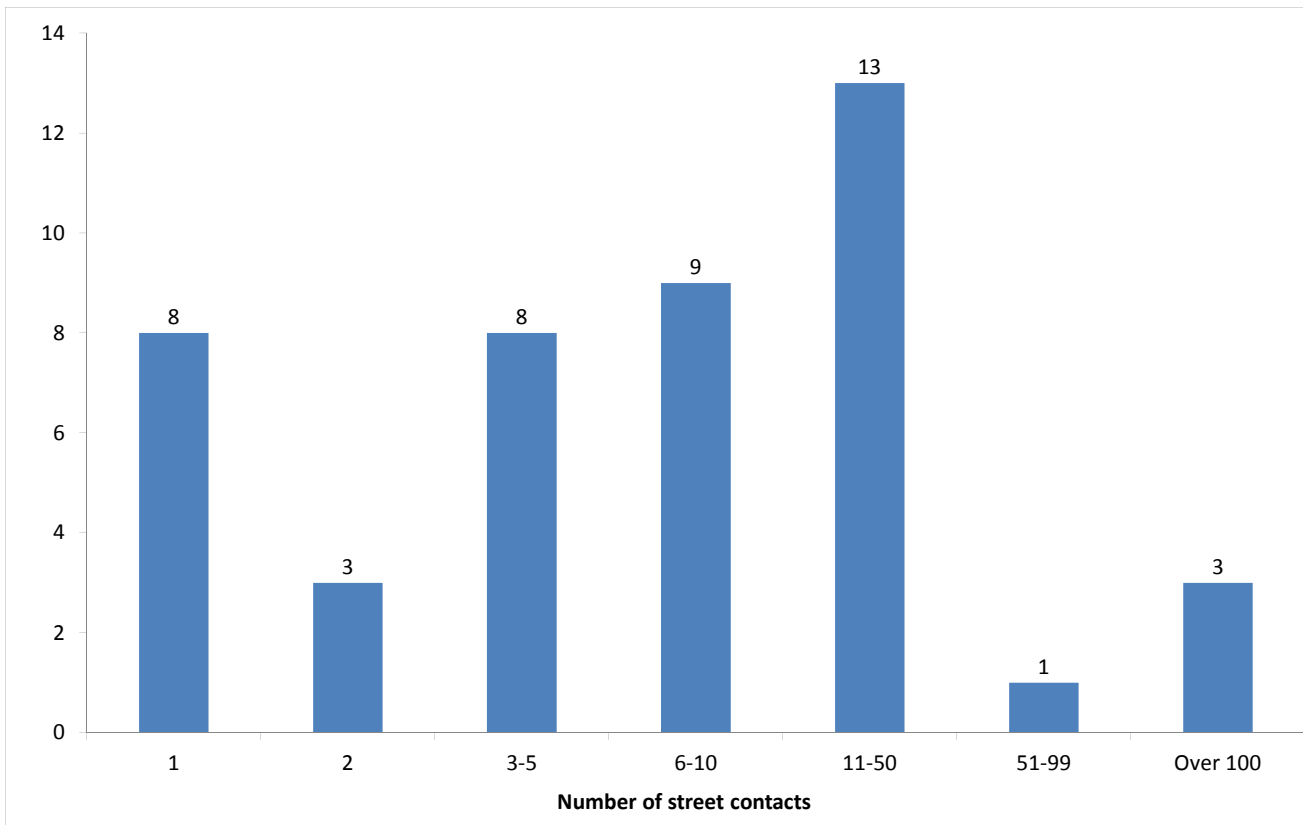
The black line shows the total number of people seen rough sleeping.

The green line shows the number of people seen rough sleeping excluding anyone from Central and East European (CEE) countries.

The pink line shows the number of people seen rough sleeping from CEE countries.

5) No booking into accommodation events

People contacted in the quarter with no accommodation events (booking or referrals) by any outreach or BBS team, by total number of street contacts recorded on CHAIN



Base: 45

45 (30%) verified rough sleepers contacted in the City of London this quarter have never had a booking in action recorded on CHAIN. This is consistent with previous periods.

33 of these people have slept rough in the quarter, which is 39% of all people sleeping rough this quarter.

8 (18%) of the people who have never had a booking in action recorded on CHAIN have only ever had one street contact recorded.

3 people in the City of London have never had a booking in action despite having over a hundred street contacts. This is consistent with previous periods.

6) Accommodation and reconnection events (Outreach)

Outreach accommodation (bookings and referrals) and reconnection events achieved in the quarter by type of accommodation

Accommodation type	No. of events	%
Assessment centre	0	0%
Bed & breakfast	3	5%
Clinic/Detox/Rehab	0	0%
Night Centre	0	0%
Rolling shelter	26	40%
<i>Referrals only (no booking in)</i>	<i>14</i>	
Hostel	16	25%
<i>Referral rejected (no booking in)</i>	<i>1</i>	
Other temporary	0	0%
Second-stage accommodation	0	0%
St Mungo's complex needs	0	0%
St Mungo's semi-independent	0	0%
Clearing House/RSI	3	5%
LA tenancy (general needs)	0	0%
Private rented sector	0	0%
Private rented sector - independent	2	3%
Private rented sector - with some floating support/support	0	0%
RSL tenancy (general needs)	0	0%
Sheltered housing	1	2%
Supported housing	0	0%
Other long-term accommodation	2	3%
Bookings into accommodation total	53	82%
Return to home area	7	11%
Seeking work	1	2%
Move to area for friends/family	3	5%
Move to area with appropriate services	4	6%
Other	0	0%
Reconnections total	12	18%
TOTAL	65	100%

Outreach and BBS teams across City of London succeeded in reconnecting or booking into accommodation 37 people, 25% of the 149 people contacted during the quarter.

This is consistent with previous quarters.

29 people had a total of 53 booking in events. This indicates that individuals can be booked into accommodation (the same type or different) more than once in the quarter.

6 people were booked into long-term accommodation. This is higher than the previous two quarters, when there were 3 each.

12 people were booked into hostel accommodation. This is consistent with previous periods.

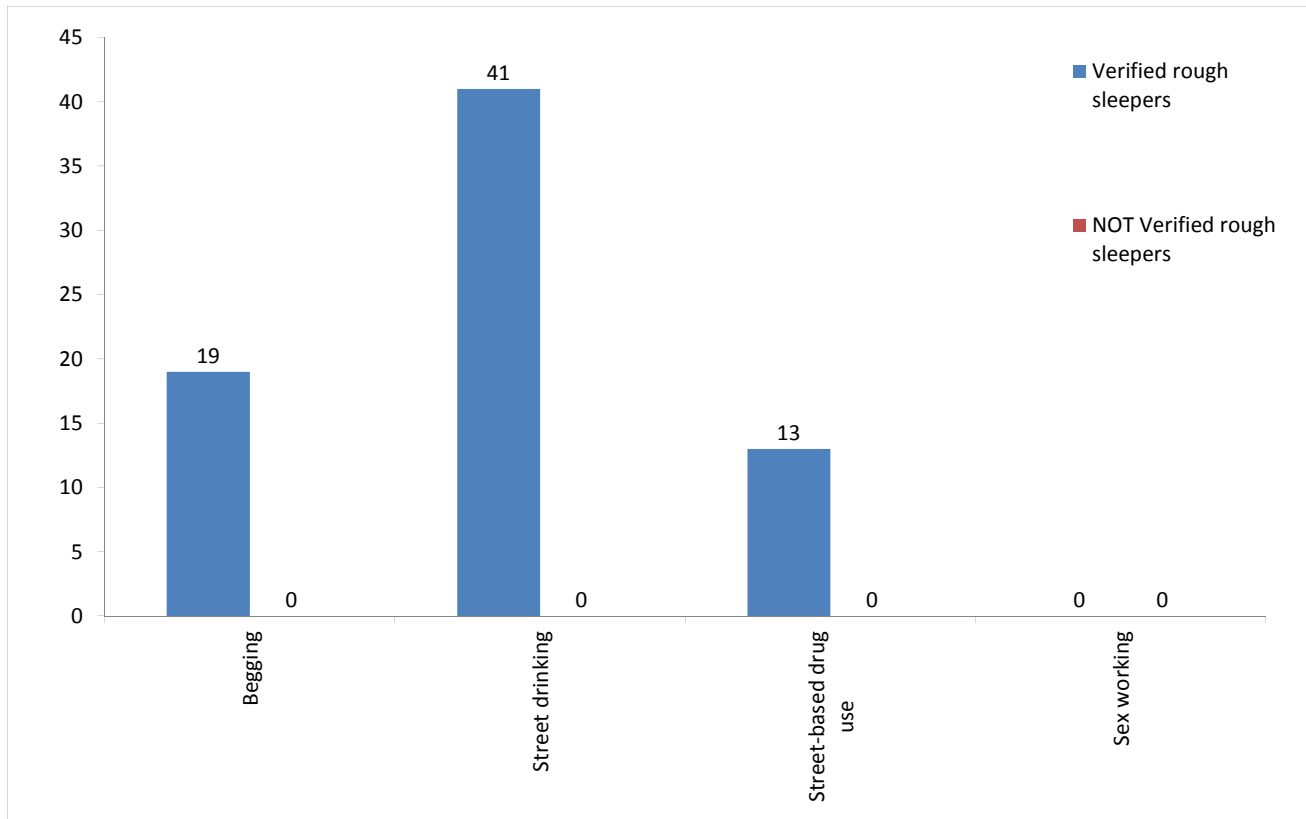
Outreach and BBS teams in the City of London achieved a confirmed reconnection with 10 people they contacted this quarter. This is 7% of the people contacted by outreach or BBS teams this quarter.

12 confirmed reconnection events were recorded by outreach and BBS teams for verified rough sleepers this quarter. There were no such actions for the wider street population (people not seen sleeping rough).

* These events are excluded from the total. Referral to hostel is a speculative referral to a hostel, confirmation of which leads to a booking in action being recorded.

7) Street activity

Street population (people who rough sleep and/or engage in a street lifestyle) contacted by outreach who fall into one or more of the street activity categories on CHAIN



Base for verified rough sleepers: 56

Base for people not verified as rough sleepers: 2

Of the 149 verified rough sleepers contacted this quarter, 56 (38%) have been assessed as engaging in one or more street activities.

Some of these people contacted this quarter have been seen engaging in more than one type of street activity at some point.

In addition to the 149 verified rough sleepers contacted in the quarter by outreach or BBS teams, 2 people who are considered vulnerable but have not been seen rough sleeping were also contacted.

Temporary Accommodation: hostels, assessment centres, rolling shelters and second stage

8) Arrivals

Temporary accommodation arrivals by accommodation project and source of referral.

5 people arrived at accommodation in the City of London this year. These 5 people had 5 arrival actions.

The numbers of people arriving and arrivals are lower than the previous two periods, when they were affected by the opening of The Lodge. They have now returned to previous levels.

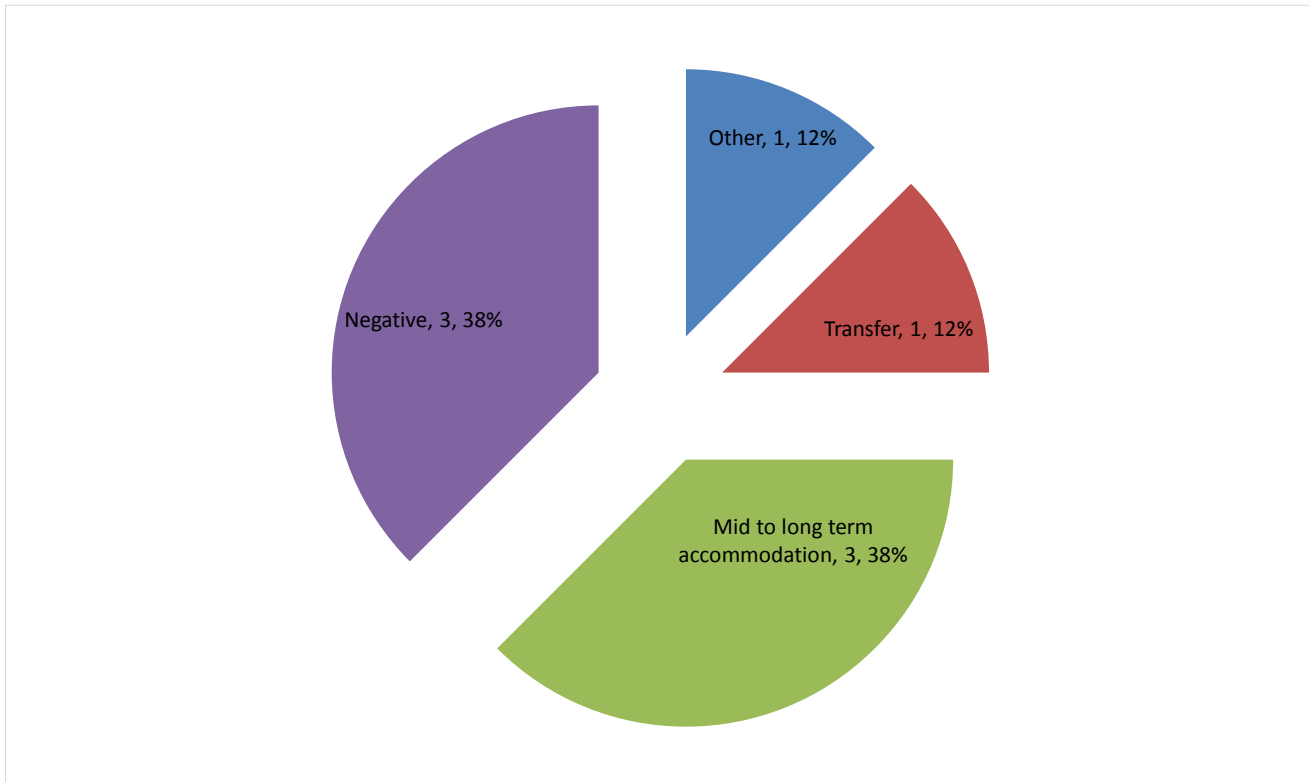
The proportion of arrivals to accommodation in The City of London that were referred by outreach or BBS teams and other accommodation projects is consistent with previous periods.

Breakdown by accommodation:

Source of referral	Passage BBS and Day Centre	BBS - St Mungo's	City Rough Sleepers Team	Total
Providence Row - Middle Street			2	2
St Mungo's - The Lodge	1	1	1	3
Total	1	1	3	5

9) Departures - destination on departure

Departure actions by destination on departure



Base: 8

Destination categories on CHAIN	Chart category	Colour
Care home, Clearing House/RSI, Home area, Hospital - long term, LA tenancy (general needs), Long-term accommodation, Previous home, Private rented sector - independent, Private rented sector - supported, RSL tenancy (general needs), Sheltered Housing, Supported Housing	Mid to long term accommodation	Yellow
Bed & Breakfast, Detox clinic, Hostel, Hostel - another organisation, Hostel - within the organisation, Rehab clinic, Temporary accommodation, Psychiatric hospital, Hospital - NOT long term/acute care	Transfer	Maroon
Not known, Sleeping rough/returned to streets, Taken into custody	Negative	Cyan
Died, Outside London, Staying with family, Staying with friends	Other	Green

Destination on departure from temporary accommodation	Number	%
Detox clinic	1	13%
LA tenancy (general needs)	2	25%
Not known	2	25%
Sleeping rough/Returned to streets	1	13%
Staying with family	1	13%
Supported Housing	1	13%
Total	8	100%

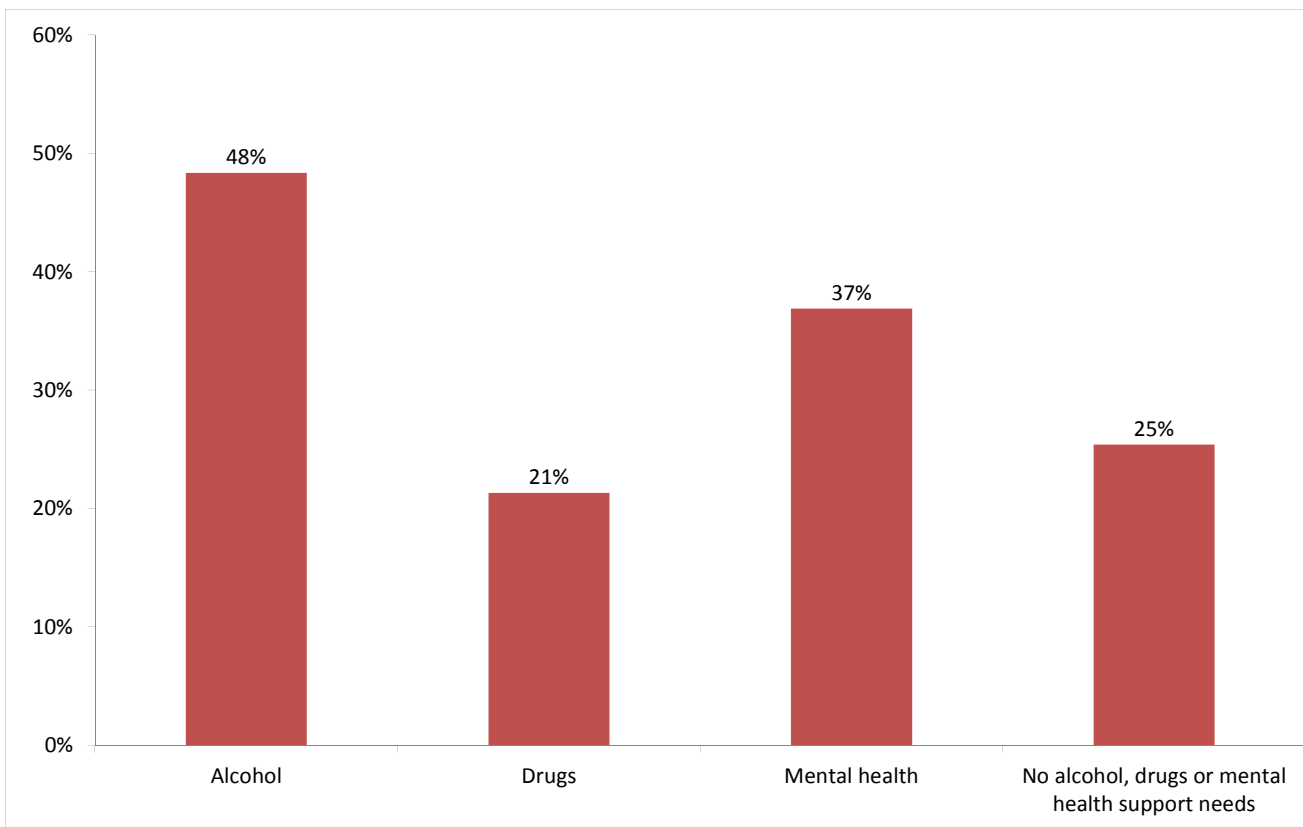
Breakdown by accommodation

Destination Accommodation	Detox clinic	LA tenancy (general needs)	Not known	Sleeping rough/Returned	Staying with family	Supported Housing	Total
Providence Row - Middle Street		2	1	1	1		5
St Mungo's - The Lodge	1		1			1	3
Total	1	2	2	1	1	1	8

Client Support Needs/Institutional History

10) Support needs

People contacted by outreach or BBS teams and/or arriving in accommodation in the quarter by support needs



Base: 122 Note that the base figure for this graph excludes clients where all 3 support needs are not known or not recorded (34).

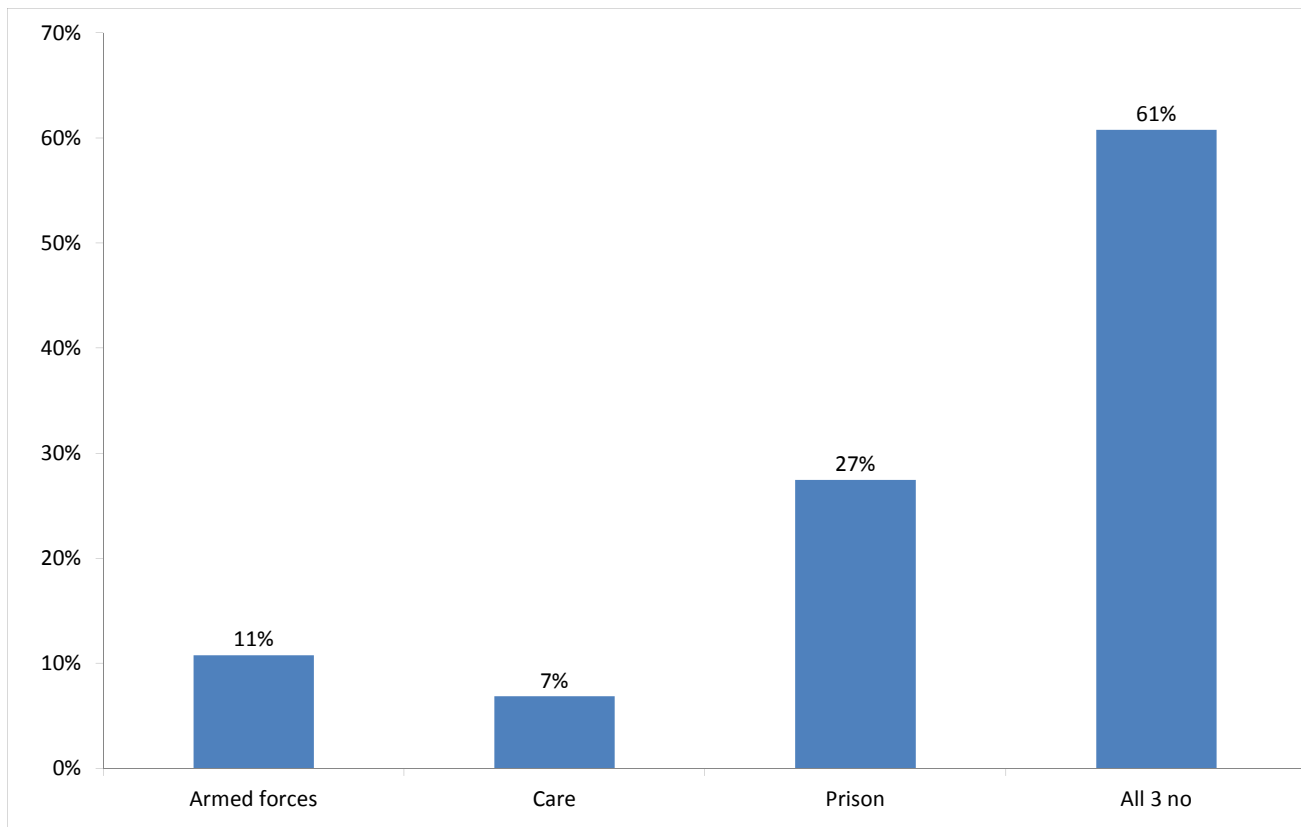
Support Needs	No. of people	%
Alcohol only	29	19%
Drugs only	9	6%
Mental health only	15	10%
Alcohol and drugs	5	3%
Alcohol and mental health	18	12%
Drugs and mental health	5	3%
Alcohol, drugs and mental health	7	4%
All 3 no	31	20%
All 3 not known or not assessed	34	22%
All 3 no, not known or not assessed	3	2%
Total	156	100%

The proportion of people contacted in the City of London with an alcohol, drugs or mental health support need is consistent with the previous two periods.

The proportion of people contacted in the City of London with a drug support need is lower than the proportion across all boroughs this quarter, 38%.

11) Experience of armed forces, care or prison

People contacted by outreach or BBS teams and/or arriving in accommodation in the quarter by experience of the armed forces, care or prison



Base: 102 Note that the base figure for this graph excludes clients where all 3 institutional histories are not known.

11 people contacted in the City of London this quarter have previously been in the armed forces (17 last quarter).

Nationality	Number	%
UK	5	45%
Non-UK	6	55%
Total	11	100%

7 people contacted in the City of London this quarter have previously been in care (13 last quarter).

28 people contacted in the City of London this quarter have previously been in prison (24 last quarter).

It is possible for someone contacted to have previous experience of more than one institution and so be included in more than one of the above figures. 3 people contacted in the year have been in care and prison.

The proportion of people contacted in the City of London with previous experience of the armed forces, care or prison is consistent with previous periods.

The proportion of people with experience of prison is less than the proportion across all boroughs this quarter, 44%.