



**CHAIN**  
**Quarterly Report for**  
**Camden**  
**January - March 2011**



# CHAIN Quarterly report for Camden 1st January to 31st March 2011

## Contents

### Outreach Work

#### 1) Rough sleeping

People seen by outreach or building based (BBS) teams in the quarter - rough sleeping or contacted either on the streets or in services

#### 2) Rough sleeping volume

People seen rough sleeping by number of bedded down contacts during the quarter

#### 3) Nationality of rough sleepers

People seen rough sleeping by outreach or BBS teams during the quarter by flow, stock and returner model.

#### 4) People contacted by month

People seen rough sleeping by outreach or building based (BBS) teams by month

#### 5) No booking into accommodation events

People contacted in the quarter with no accommodation events (booking or referrals) by any outreach or BBS team, by total number of street contacts recorded on CHAIN

#### 6) Accommodation and reconnection events (Outreach)

Outreach accommodation (bookings and referrals) and reconnection events achieved in the quarter by type of accommodation

### Wider street population

#### 7) Street activity

Street population (people who rough sleep and/or engage in a street lifestyle) contacted by outreach who fall into one or more of the street activity categories on CHAIN

### Hostels, assessment centres, rolling shelters and second stage accommodation

#### 8) Arrivals

Temporary accommodation arrivals by accommodation project and source of referral.

#### 9) Departures - destination on departure

Departure actions by destination on departure

### Support needs, institutional history and wider street population

#### 10) Support needs

People contacted by outreach or BBS teams and/or arriving in accommodation in the quarter by support needs

#### 11) Experience of armed forces, care or prison

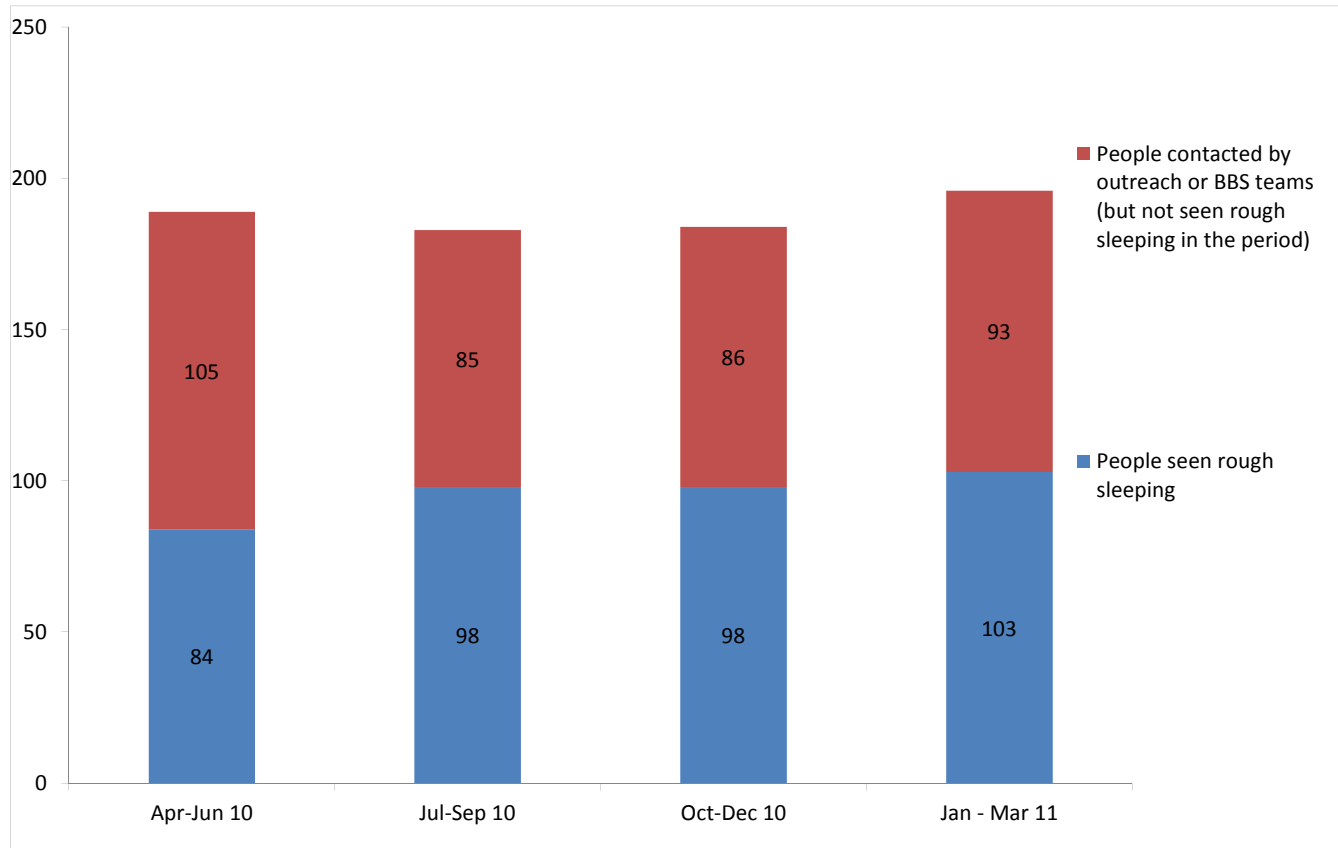
People contacted by outreach or BBS teams and/or arriving in accommodation in the quarter by experience of the armed forces, care or prison

# CHAIN Quarterly report for Camden

## Outreach Work

### 1) Rough sleeping

People seen by outreach or building based (BBS) teams in the quarter - rough sleeping or contacted either on the streets or in services



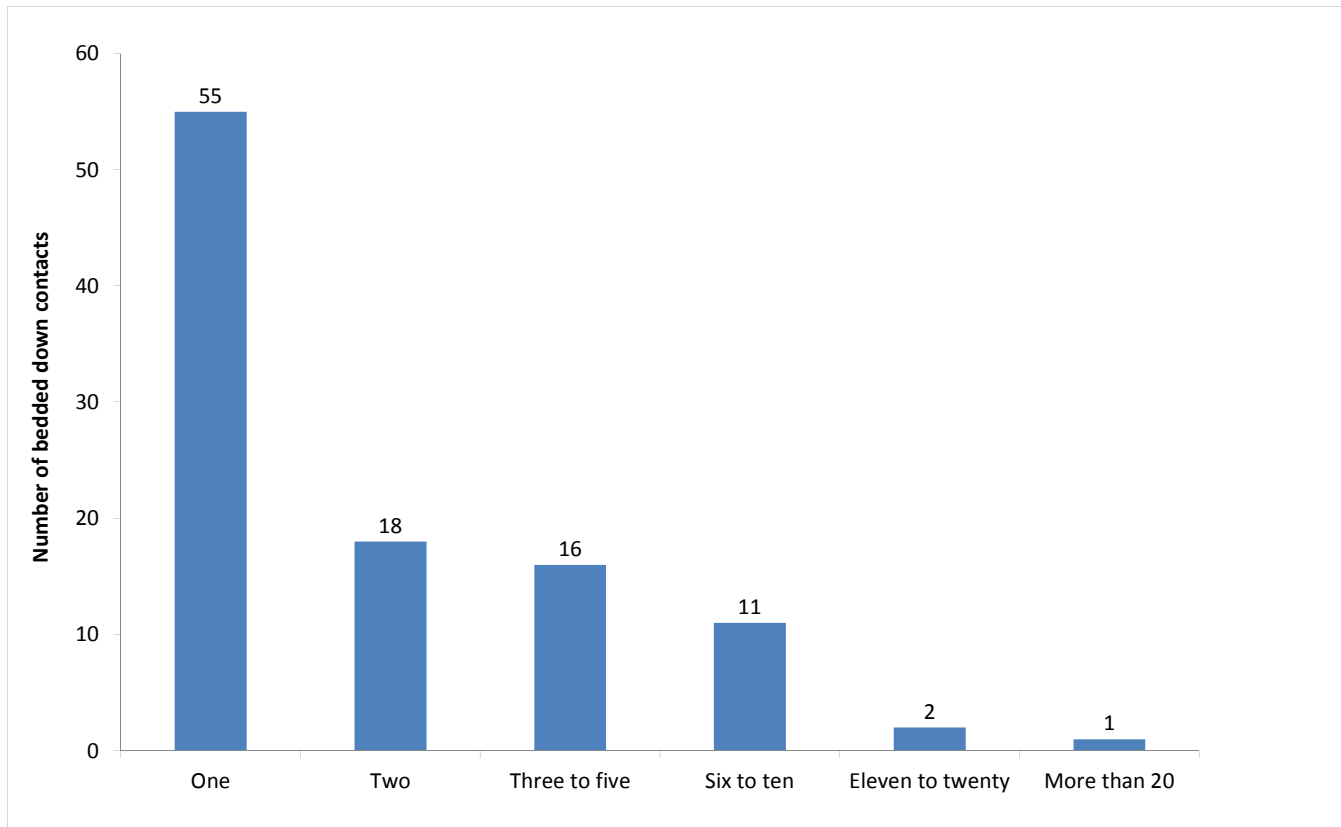
Apr-Jun 10 base: 189  
Jul-Sep 10 base: 183  
Oct-Dec 10 base: 184  
Jan-Mar 11 base: 196

196 verified rough sleepers were contacted by services in Camden during the quarter. This is an increase from 184 last quarter and compares to 155 in the same quarter last year.

Of these 196, 103 had a bedded down street contact in the quarter and so were known to have slept rough in Camden during the quarter.

## 2) Rough sleeping volume

People seen rough sleeping by number of bedded down contacts during the quarter



Base: 103

The proportion of stock, flow and returner people contacted across Camden this quarter is similar to the previous quarter.

Of the 103 people seen rough sleeping this quarter, 55 only had a single bedded down street contact.

Of the 103 people seen bedded down, 8 were from CEE countries and seen only once during the period.

NB CEE nationals often cannot be offered the same service as other people due to benefit restrictions.

### 3) Nationality of rough sleepers

People seen rough sleeping by outreach or BBS teams during the quarter by flow, stock and returner model.

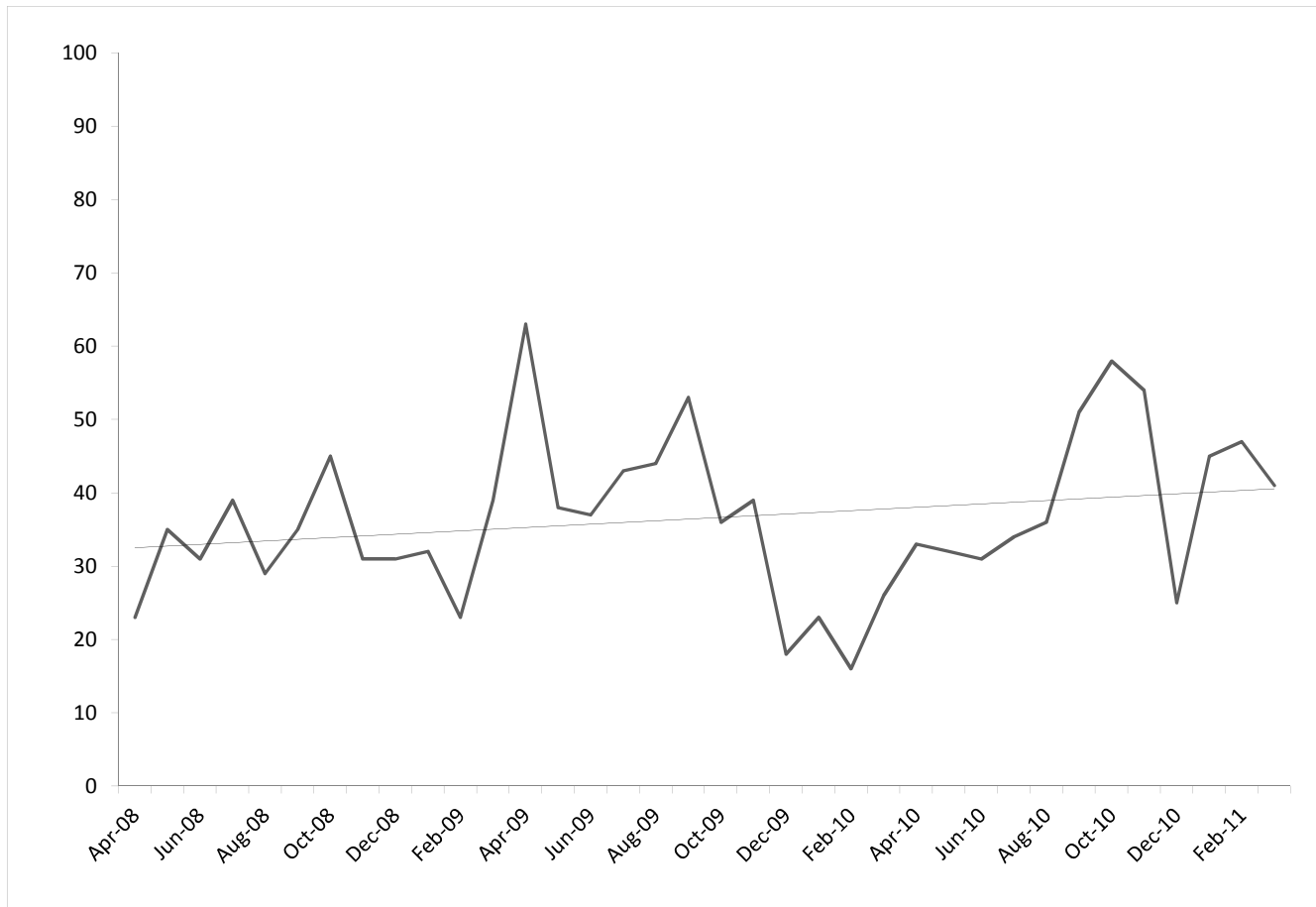
Nationality	Apr-Jun	%	Jul-Sep	%	Oct-Dec	%	Jan-Mar	%
UK	40	51%	43	54%	52	61%	49	53%
Ireland (Republic of)	3	4%	2	3%	0	0%	5	5%
Portugal	2	3%	1	1%	2	2%	1	1%
Bulgaria	0	0%	1	1%	0	0%	0	0%
Czech Republic	0	0%	1	1%	0	0%	4	4%
Estonia	1	1%	0	0%	0	0%	0	0%
Hungary	1	1%	1	1%	0	0%	0	0%
Latvia	1	1%	3	4%	1	1%	2	2%
Lithuania	2	3%	0	0%	2	2%	4	4%
Poland	12	15%	18	23%	13	15%	15	16%
Romania	5	6%	3	4%	3	4%	1	1%
Slovenia	0	0%	0	0%	0	0%	0	0%
Slovakia	1	1%	0	0%	3	4%	1	1%
<b>Central and East European (CEE) sub-total</b>	<b>23</b>	<b>29%</b>	<b>27</b>	<b>34%</b>	<b>22</b>	<b>26%</b>	<b>27</b>	<b>29%</b>
other Europe	6	8%	2	2%	1	1%	7	8%
Eritrea	0	0%	1	1%	1	1%	0	0%
Africa	1	1%	2	2%	3	4%	3	3%
America	0	0%	0	0%	1	1%	0	0%
Asia	3	4%	1	1%	3	4%	1	1%
Australasia	0	0%	0	0%	0	0%	0	0%
Missing	3		12		11		6	
Not known	3		7		2		4	
<b>Total</b>	<b>84</b>		<b>98</b>		<b>98</b>		<b>103</b>	
<b>Total**</b>	<b>78</b>		<b>79</b>		<b>85</b>		<b>93</b>	

Base: 93 Note that the base figure for this graph excludes clients where the nationality is missing or not known (10).

\*\*This total excludes those people seen rough sleeping where their nationality is not known

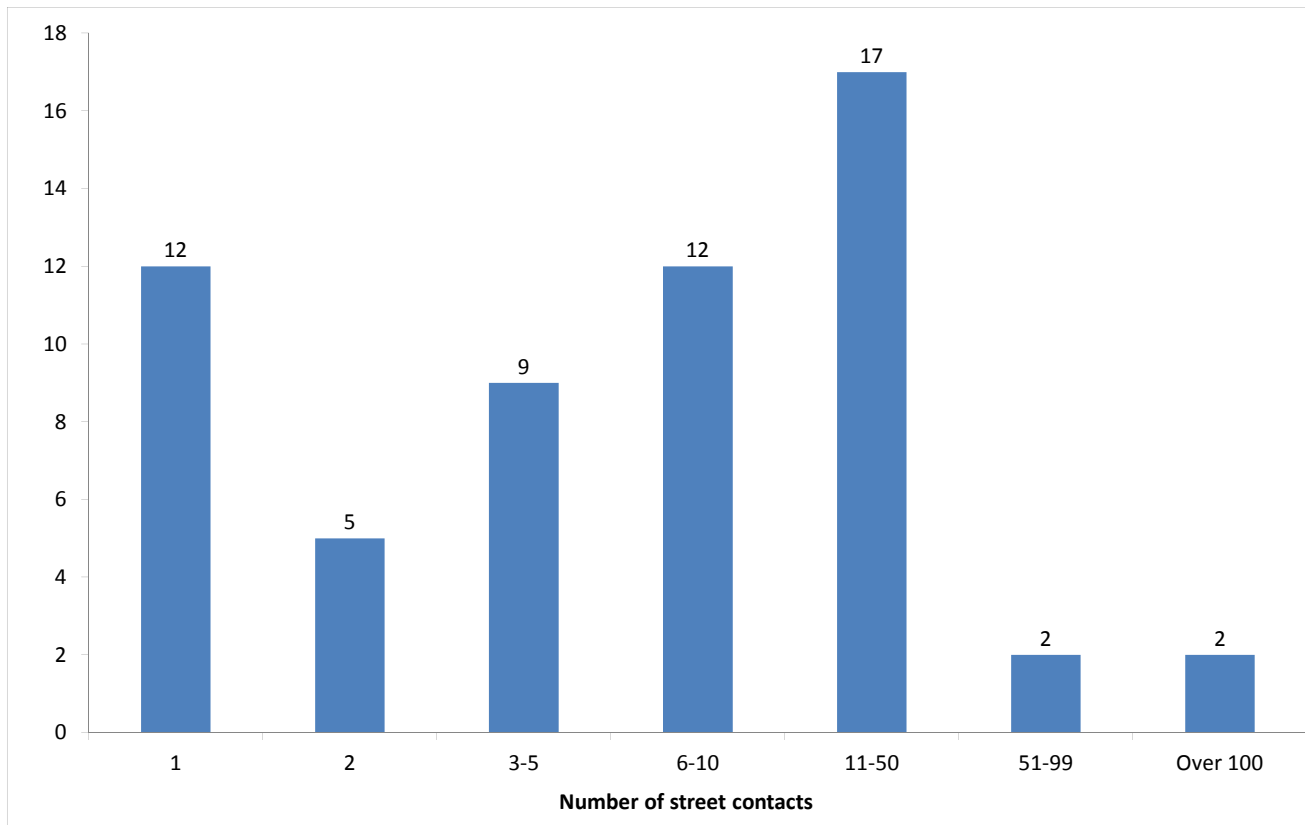
#### 4) People contacted by month

People seen rough sleeping by outreach or building based (BBS) teams by month



## 5) No booking into accommodation events

People contacted in the quarter with no accommodation events (booking or referrals) by any outreach or BBS team, by total number of street contacts recorded on CHAIN



Base: 59

59 (30%) verified rough sleepers contacted across Camden this quarter have never had a booking in action recorded on CHAIN. This is consistent with the previous period - 57 (31%).

45 of these people have slept rough in the quarter, which is 44% of all people sleeping rough this quarter.

12 (20%) of the people who have never had a booking in action recorded on CHAIN have only ever had one street contact recorded.

2 people in Camden have never had a booking in action despite having over a hundred street contacts. This is consistent with previous quarters.

## 6) Accommodation and reconnection events (Outreach)

Outreach accommodation (bookings and referrals) and reconnection events achieved in the quarter by type of accommodation

Accommodation type	No. of events	%
Assessment centre	2	2%
Bed & breakfast	0	0%
Clinic/Detox/Rehab	0	0%
Night Centre	0	0%
Rolling shelter	6	6%
<i>Referrals only (no booking in)</i>	17	
Hostel	24	24%
<i>Referral rejected (no booking in)</i>	0	
Other temporary	0	0%
Second-stage accommodation	0	0%
St Mungo's complex needs	0	0%
St Mungo's semi-independent	0	0%
Clearing House/RSI	0	0%
LA tenancy (general needs)	0	0%
Private rented sector	0	0%
Private rented sector - independent	0	0%
Private rented sector - with some floating support/support	0	0%
RSL tenancy (general needs)	0	0%
Sheltered housing	0	0%
Supported housing	0	0%
Other long-term accommodation	1	1%
<b>Bookings into accommodation total</b>	<b>33</b>	<b>34%</b>
Return to home area	48	49%
Seeking work	1	1%
Move to area for friends/family	4	4%
Move to area with appropriate services	5	5%
Other	17	17%
<b>Reconnections total</b>	<b>65</b>	<b>66%</b>
<b>TOTAL</b>	<b>98</b>	<b>100%</b>

Outreach and BBS teams across Camden succeeded in reconnecting or booking into accommodation 22 people, 11% of the 196 people contacted during the quarter.

This compares to 18 people (10%) reconnected or booked into accommodation last quarter.

15 people had a total of 33 booking in events. This indicates that individuals can be booked into accommodation (the same type or different) more than once in the quarter.

Nobody was booked into long-term accommodation. This is the same as last quarter where nobody was booked into long-term accommodation - (Jul - Sep, 1 person).

14 people were booked into hostel accommodation. This is consistent with previous periods (Apr-Jun; 17, Jul-Sep; 12, Oct - Dec; 13).

Outreach and BBS teams across Camden achieved a confirmed reconnection with 8 people they contacted this quarter. This is 4% of the people contacted by outreach or BBS teams this quarter.

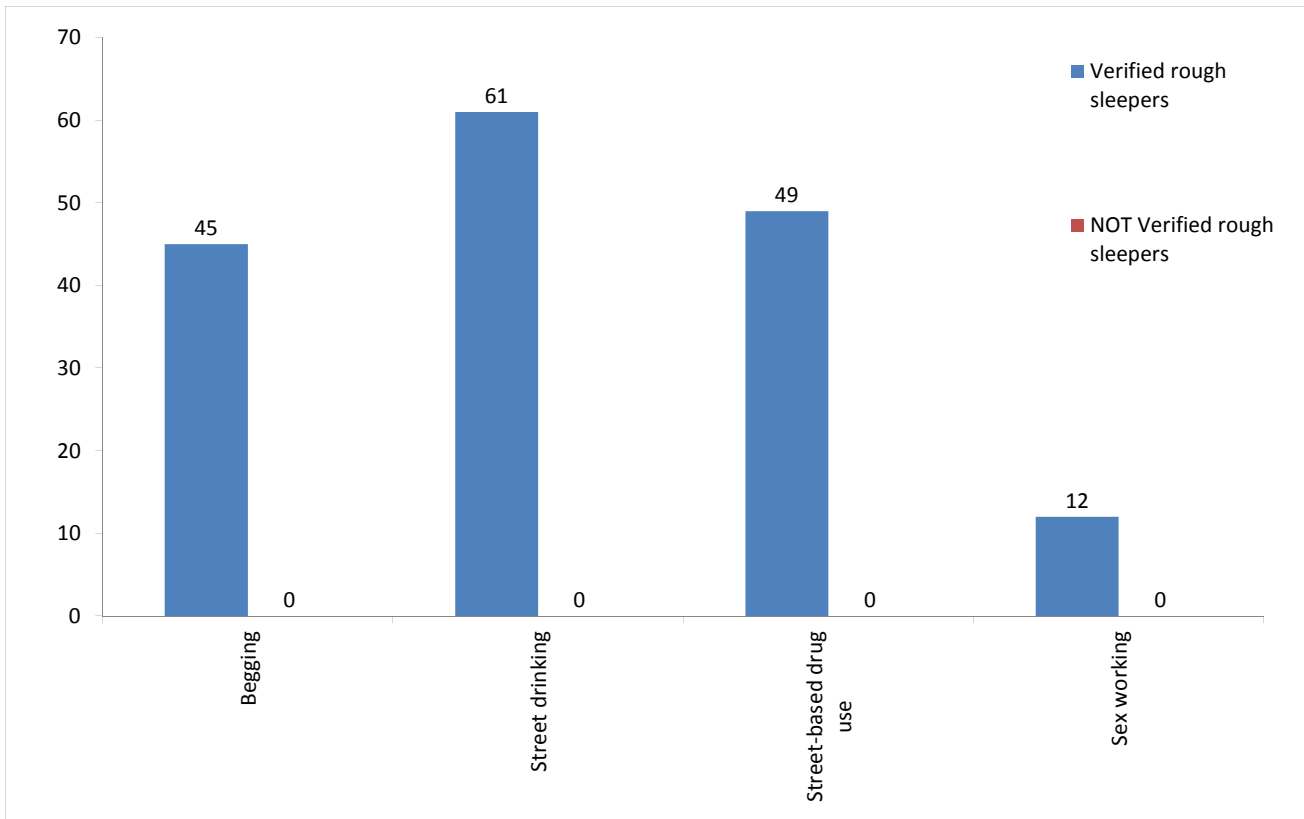
65 advised reconnection events were recorded by outreach and BBS teams for verified rough sleepers this quarter.

\* These events are excluded from the total. Referral to hostel is a speculative referral to a hostel, confirmation of which leads to a booking in action being recorded.



## 7) Street activity

Street population (people who rough sleep and/or engage in a street lifestyle) contacted by outreach who fall into one or more of the street activity categories on CHAIN



Base for verified rough sleepers: 86

Base for people not verified as rough sleepers: 2

Of the 196 verified rough sleepers contacted this quarter, 86 (44%) have been assessed as engaging in one or more street activities.

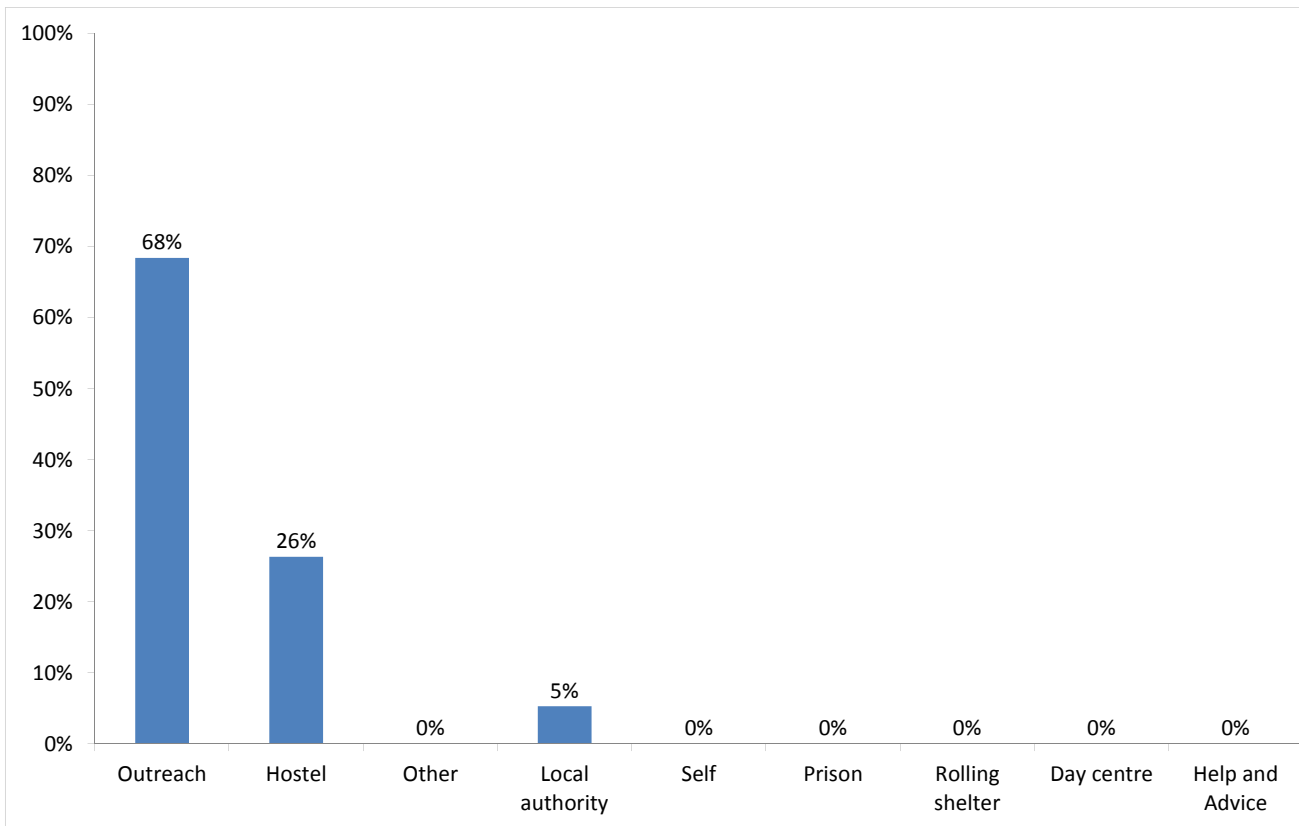
Some of these people contacted this quarter have been seen engaging in more than one type of street activity at some point.

In addition to the 196 verified rough sleepers contacted in the quarter by outreach or BBS teams, 2 people who are considered vulnerable but have not been seen rough sleeping were also contacted.

## Temporary Accommodation: hostels, assessment centres, rolling shelters and second stage

### 8) Arrivals

Temporary accommodation arrivals by accommodation project and source of referral.



Base: 19

19 people arrived at accommodation in Camden this year. These 19 people had 19 arrival actions.

The numbers of people arriving and arrivals is slightly higher than last quarter (14) but lower than previous periods (Apr-Jun; 37, Jul - Sep; 30).

The proportion of arrivals to accommodation in Camden that were referred by outreach or BBS teams projects is consistent with previous periods this quarter.

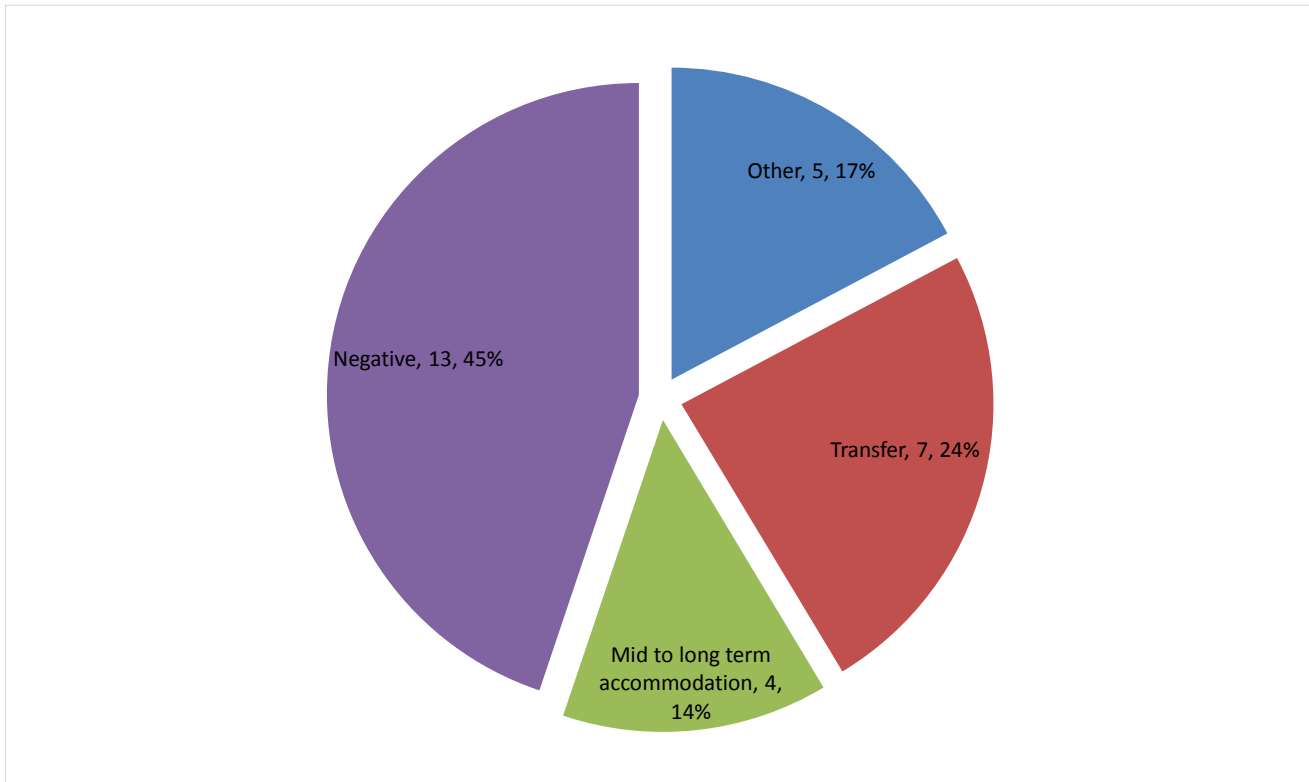
The proportion of arrivals in Camden referred by hostel accommodation (26%) is notably higher than the proportion across all boroughs (8%) this quarter.

Breakdown by accommodation:

Source of referral → Accommodation ↓	Passage BBS and Day Centre	Westminster SSHU - St Mungo's	Westminster SPOT	CRI - Camden	Ealing SPOT	Hostel	St Mungo's internal transfer	Local authority	Total
St John of God - Olallo Project	2	1	4						7
SHP - Arlington Road				1					1
SHP - 165 Project				1		1			2
Salvation Army - Cambria House						1			1
St Mungo's - Birkenhead Street				1			1	1	3
St Mungo's - Endell Street				1					1
St Mungo's - Endsleigh Gardens				1	1	1	1		4
<b>Total</b>	<b>2</b>	<b>1</b>	<b>4</b>	<b>5</b>	<b>1</b>	<b>3</b>	<b>2</b>	<b>1</b>	<b>19</b>

## 9) Departures - destination on departure

Departure actions by destination on departure



Base: 28

Destination categories on CHAIN	Chart category	Colour
Care home, Clearing House/RSI, Home area, Hospital - long term, LA tenancy (general needs), Long-term accommodation, Previous home, Private rented sector - independent, Private rented sector - supported, RSL tenancy (general needs), Sheltered Housing, Supported Housing	Mid to long term accommodation	
Bed & Breakfast, Detox clinic, Hostel, Hostel - another organisation, Hostel - within the organisation, Rehab clinic, Temporary accommodation, Psychiatric hospital, Hospital - NOT long term/acute care	Transfer	
Not known, Sleeping rough/returned to streets, Taken into custody	Negative	
Died, Outside London, Staying with family, Staying with friends	Other	

Destination on departure from temporary accommodation	Number	%
Accomm where client is occupier	0	0%
Bed & Breakfast	1	4%
Care home	0	0%
Clearing House/RSI	1	4%
Detox clinic	0	0%
Committed suicide	0	0%
Died	1	4%
Hostel - another organisation	3	11%
Hostel - within the organisation	3	11%
LA tenancy (general needs)	0	0%
Long-term accommodation	0	0%
Not known	8	29%
Outside London	0	0%
Previous home (describe type of accomm in notes)	0	0%
Private rented sector - independent	1	4%
Sleeping rough/Returned to streets	4	14%
Staying with family	1	4%
Staying with friends	3	11%
Supported Housing	1	4%
Taken into custody	1	4%
Temporary accommodation	0	0%
<b>Total</b>	<b>28</b>	<b>100%</b>

21% of people left accommodation to move to another hostel, this compares to 26% last quarter.

14% of people left accommodation to move to mid to long-term accommodation - Apr-Jun; 33%, Jul-Sep; 31%, Oct-Dec; 29%

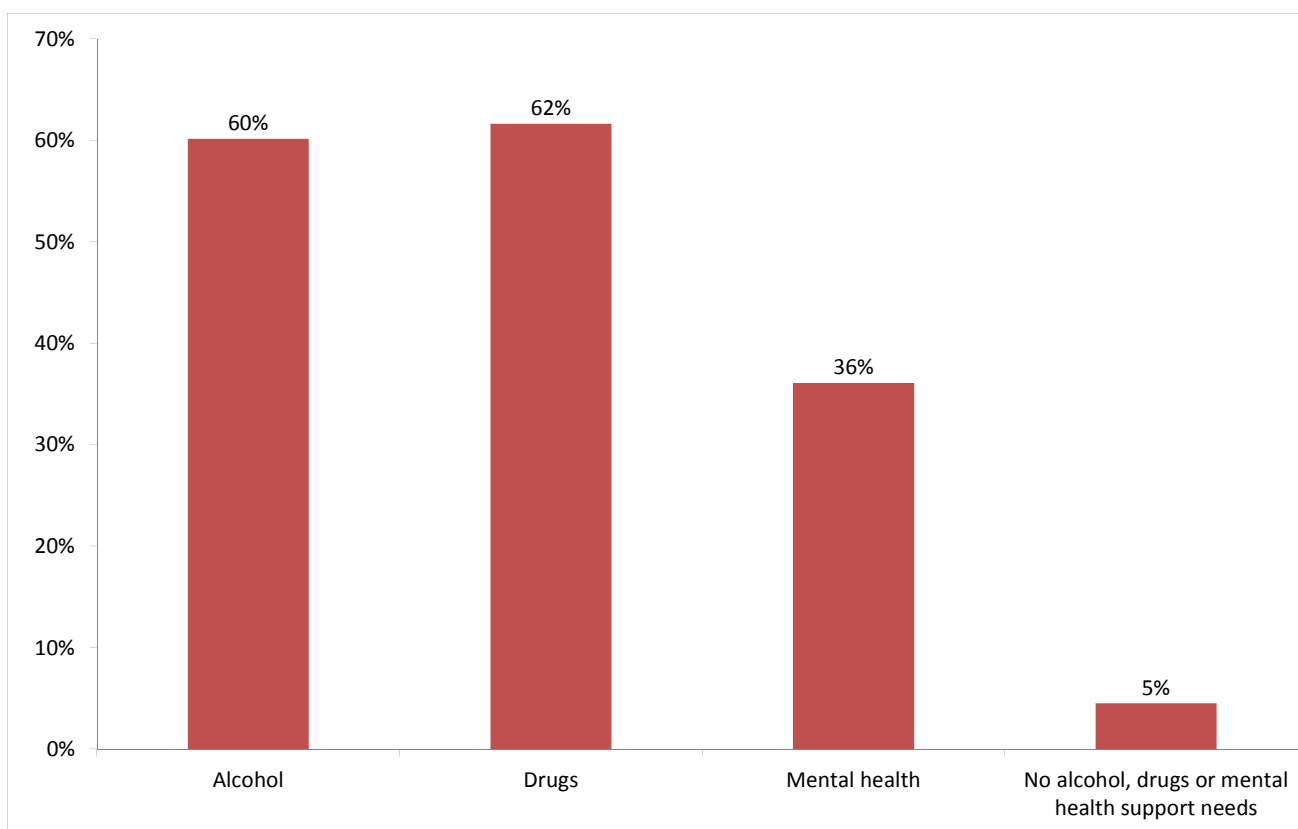
#### Breakdown by accommodation

Destination Accommodation	Bed & Breakfast	Clearing House/RSI	Died	Hostel - another organisation	Hostel - within the organisation	Not known	Private rented sector -	Sleeping rough/Returned	Staying with family	Staying with friends	Supported Housing	Taken into custody	Total
Novas Group - Arlington House						1							1
St John of God - Olallo Project						3	1	3		3			10
SHP - 165 Project			1										1
St Mungo's - Birkenhead Street		1			1	1						1	4
St Mungo's - Endell Street						1					1		2
St Mungo's - Endsleigh Gardens	1			2				1	1				5
St Mungo's - St Pancras Way				1	2	2							5
<b>Total</b>	<b>1</b>	<b>1</b>	<b>1</b>	<b>3</b>	<b>3</b>	<b>8</b>	<b>1</b>	<b>4</b>	<b>1</b>	<b>3</b>	<b>1</b>	<b>1</b>	<b>28</b>

## Client Support Needs/Institutional History

### 10) Support needs

People contacted by outreach or BBS teams and/or arriving in accommodation in the quarter by support needs



Base: 133 Note that the base figure for this graph excludes clients where all 3 support needs are not known or not recorded (80).

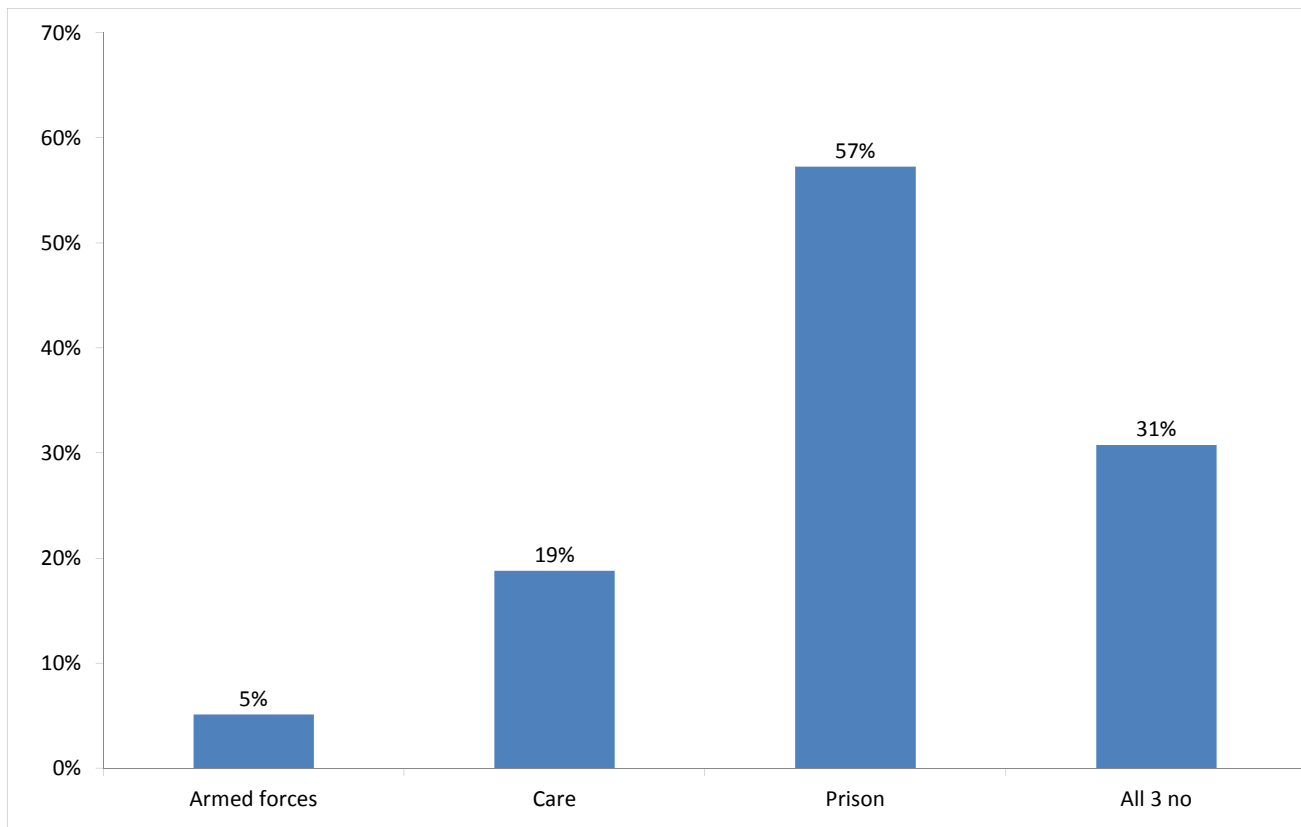
Support Needs	No. of people	%
Alcohol only	26	12%
Drugs only	24	11%
Mental health only	9	4%
Alcohol and drugs	27	13%
Alcohol and mental health	8	4%
Drugs and mental health	12	6%
Alcohol, drugs and mental health	19	9%
All 3 no	6	3%
All 3 not known or not assessed	80	38%
All 3 no, not known or not assessed	2	1%
<b>Total</b>	<b>213</b>	<b>100%</b>

The proportion of people contacted in Camden with an alcohol, drugs or mental health support need is consistent with the previous three quarters.

The proportion of people contacted in Camden with an alcohol or mental health support need is consistent with the proportion across all boroughs this quarter. The proportion with a drugs support need is higher than that across all boroughs (43%).

## 11) Experience of armed forces, care or prison

People contacted by outreach or BBS teams and/or arriving in accommodation in the quarter by experience of the armed forces, care or prison



Base: 117 Note that the base figure for this graph excludes clients where all 3 institutional histories are not known.

6 people contacted in Camden this quarter have previously been in the armed forces (4 last quarter).

Nationality	Number	%
UK	4	80%
Non-UK	1	20%
<b>Total **</b>	<b>5</b>	<b>100%</b>

\*\* Nationality missing for 1 person

22 people contacted in Camden this quarter have previously been in care (20 last quarter).

67 people contacted in Camden this quarter have previously been in prison (66 last quarter).

It is possible for someone contacted to have previous experience of more than one institution and so be included in more than one of the above figures. 15 people contacted in the year have been in care and prison.

The proportion of people contacted in Camden with previous experience of the armed forces, care or prison is consistent with the previous period.