



# CHAIN

## Quarterly Report for Kensington & Chelsea January - March 2011



# CHAIN Quarterly report for Kensington and Chelsea 1st January to 31st March 2011

## Contents

### Outreach Work

#### 1) Rough sleeping

People seen by outreach or building based (BBS) teams in the quarter - rough sleeping or contacted either on the streets or in services

#### 2) Rough sleeping volume

People seen rough sleeping by number of bedded down contacts during the quarter

#### 3) Nationality of rough sleepers

People seen rough sleeping by outreach or BBS teams during the quarter

#### 4) People contacted by month

People seen rough sleeping by outreach or building based (BBS) teams by month

#### 5) No booking into accommodation events

People contacted in the quarter with no accommodation events (booking or referrals) by any outreach or BBS team, by total number of street contacts recorded on CHAIN

#### 6) Accommodation and reconnection events (Outreach)

Outreach accommodation (bookings and referrals) and reconnection events achieved in the quarter by type of accommodation

### Wider street population

#### 7) Street activity

Street population (people who rough sleep and/or engage in a street lifestyle) contacted by outreach who fall into one or more of the street activity categories on CHAIN

### Hostels, assessment centres, rolling shelters and second stage accommodation

#### 8) Arrivals

Temporary accommodation arrivals by accommodation project and source of referral.

#### 9) Departures - destination on departure

Departure actions by destination on departure

### Support needs, institutional history and wider street population

#### 10) Support needs

People contacted by outreach or BBS teams and/or arriving in accommodation in the quarter by support needs

#### 11) Experience of armed forces, care or prison

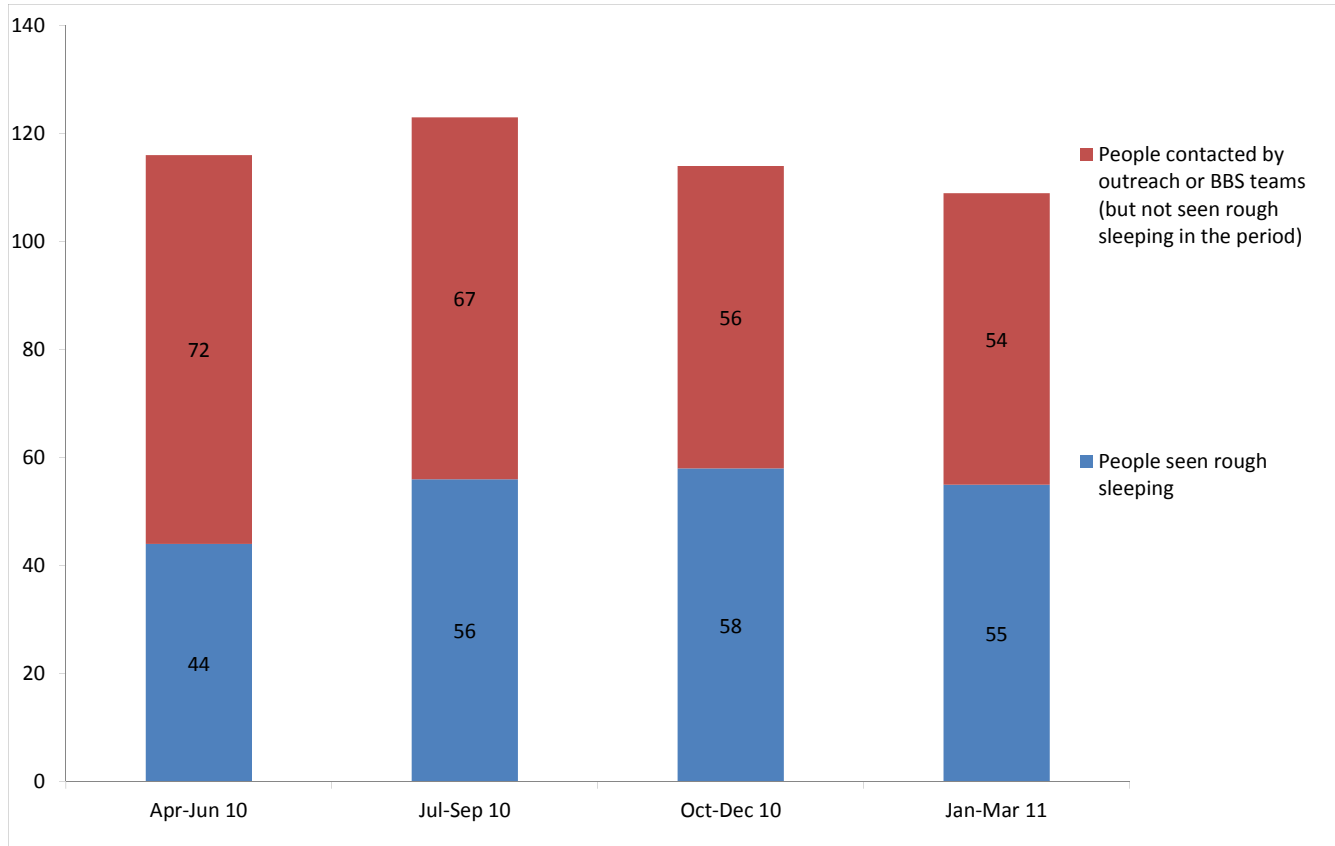
People contacted by outreach or BBS teams and/or arriving in accommodation in the quarter by experience of the armed forces, care or prison

# CHAIN Quarterly report for Kensington & Chelsea

## Outreach Work

### 1) Rough sleeping

People seen by outreach or building based (BBS) teams in the quarter - rough sleeping or contacted either on the streets or in services



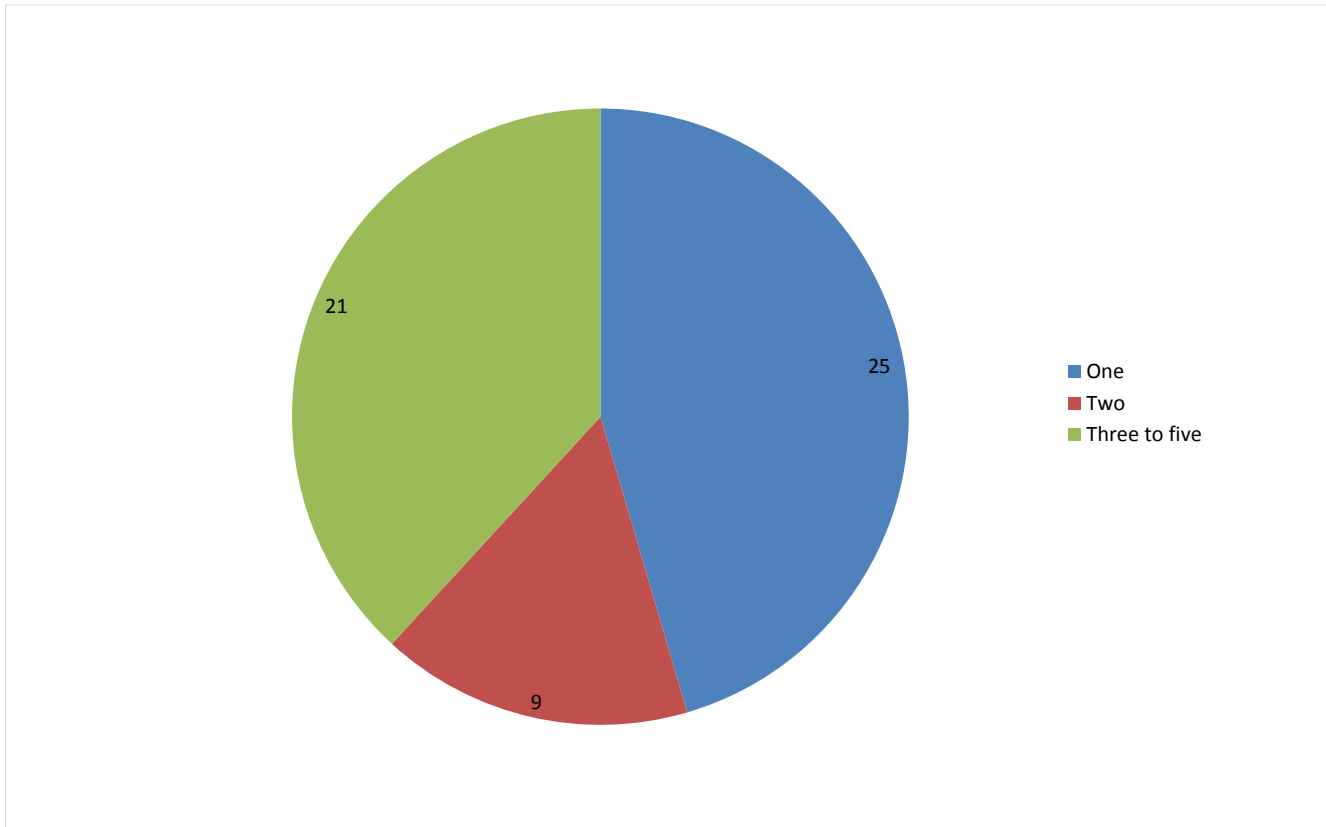
Apr-Jun 10 base: 116  
Jul-Sep 10 base: 123  
Oct-Dec 10 base: 114  
Jan-Mar 11 base: 109

109 verified rough sleepers were contacted by services in Kensington and Chelsea during the quarter. This is a decrease from 114 last quarter and compares to 119 in the same quarter last year.

Of these 109, 55 had a bedded down street contact in the quarter and so were known to have slept rough in Kensington and Chelsea during the quarter. The number sleeping rough this quarter has decreased by 5%.

## 2) Rough sleeping volume

People seen rough sleeping by number of bedded down contacts during the quarter



Base: 55

Of the 55 people seen rough sleeping this quarter, 25 only had a single bedded down street contact.

Of the 55 people seen bedded down, 4 were from CEE countries and seen only once during the period.

NB CEE nationals often cannot be offered the same service as other people due to benefit restrictions.

### 3) Nationality of rough sleepers

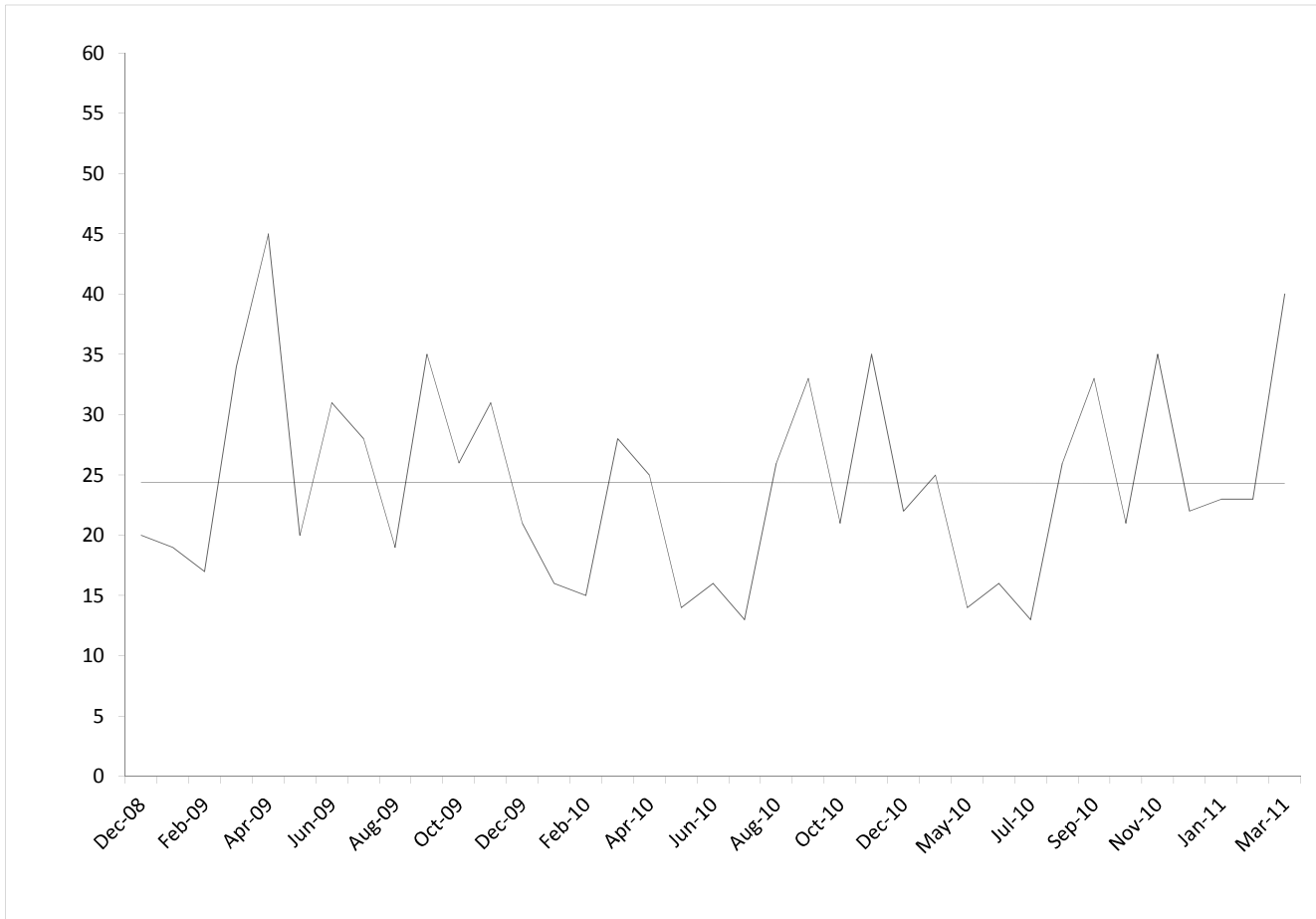
People seen rough sleeping by outreach or BBS teams during the quarter

Nationality	Apr-Jun	%	Jul-Sept	%	Oct-Dec	%	Jan-Mar	%
UK	19	46%	29	59%	28	49%	19	36%
Bulgaria								
Czech Republic	3	7%	1	2%	2	4%		
Estonia					1	2%	2	4%
Hungary								
Latvia	2	5%	1	2%	2	4%	4	8%
Lithuania			1	2%				
Poland	11	27%	5	10%	6	11%	10	19%
Romania			3	6%	2	4%	1	2%
Slovenia								
Slovakia	1	2%	1	2%			2	4%
<b>(CEE) sub-total</b>	<b>17</b>	<b>41%</b>	<b>12</b>	<b>24%</b>	<b>13</b>	<b>23%</b>	<b>19</b>	<b>36%</b>
other Europe	3	7%	3	6%	11	19%	11	21%
Africa			2	4%	3	5%	3	6%
America								
Asia	1	2%	3	6%	1	2%	1	2%
Australasia	1	2%			1	2%		
Missing	2		5				1	
Not known	1		2		1		1	
<b>Total</b>	<b>44</b>		<b>56</b>		<b>58</b>		<b>55</b>	
<b>Total**</b>	<b>41</b>	<b>100%</b>	<b>49</b>	<b>100%</b>	<b>57</b>	<b>100%</b>	<b>53</b>	<b>100%</b>

\*\*This total excludes those people seen rough sleeping where their nationality is not known

#### 4) People contacted by month

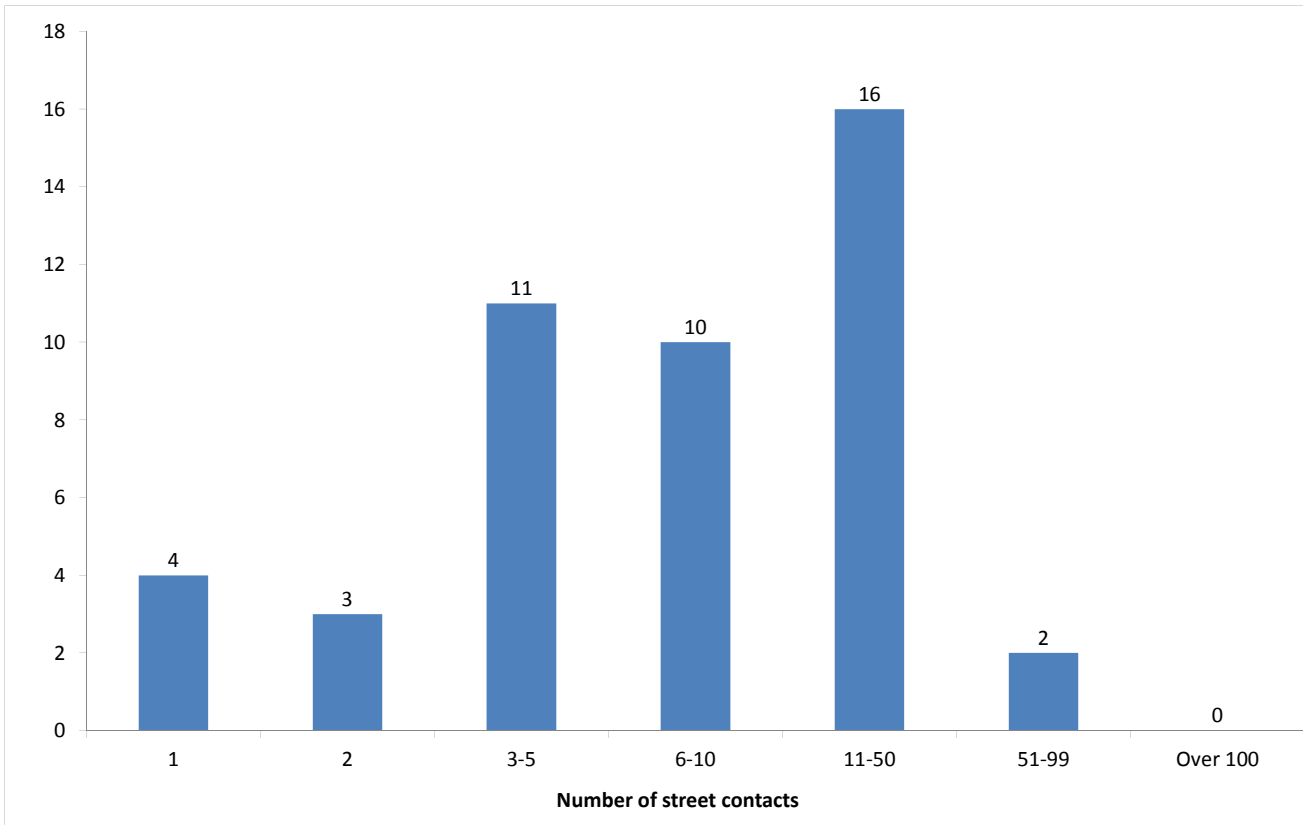
People seen rough sleeping by outreach or building based (BBS) teams by month



The number of people seen rough sleeping in Kensington and Chelsea has remained consistent over the last three years.

## 5) No booking into accommodation events

People contacted in the quarter with no accommodation events (booking or referrals) by any outreach or BBS team, by total number of street contacts recorded on CHAIN



Base: 46

46 (42%) verified rough sleepers contacted across Kensington and Chelsea this quarter have never had a booking in action recorded on CHAIN. This is consistent with previous quarters.

32 of these people have slept rough in the quarter, which is 58% of all people sleeping rough this quarter.

4 (9%) of the people who have never had a booking in action recorded on CHAIN have only ever had one street contact recorded - 10 people (23%) last quarter.

## 6) Accommodation and reconnection events (Outreach)

Outreach accommodation (bookings and referrals) and reconnection events achieved in the quarter by type of accommodation

Accommodation type	No. of events	%
Assessment centre	0	0%
Bed & breakfast	0	0%
Clinic/Detox/Rehab	0	0%
Night Centre	0	0%
Rolling shelter	0	0%
<i>Referrals only (no booking in)</i>	4	
Hostel	8	44%
<i>Referral rejected (no booking in)</i>	1	
Other temporary	0	0%
Second-stage accommodation	1	6%
St Mungo's complex needs	0	0%
St Mungo's semi-independent	0	0%
Clearing House/RSI	0	0%
LA tenancy (general needs)	0	0%
Private rented sector	0	0%
Private rented sector - independent	1	6%
Private rented sector - with some floating support/support	0	0%
RSL tenancy (general needs)	0	0%
Sheltered housing	1	6%
Supported housing	0	0%
Other long-term accommodation	0	0%
<b>Bookings into accommodation total</b>	<b>11</b>	<b>61%</b>
Return to home area	4	22%
Seeking work	0	0%
Move to area for friends/family	2	11%
Move to area with appropriate services	1	6%
Other	0	0%
<b>Reconnections total</b>	<b>7</b>	<b>39%</b>
<b>TOTAL</b>	<b>18</b>	<b>100%</b>

Outreach and BBS teams across Kensington and Chelsea succeeded in reconnecting or booking into accommodation 12 people, 11% of the 109 people contacted during the quarter.

This is consistent with previous quarters.

7 people had a total of 11 booking in events. This indicates that individuals can be booked into accommodation (the same type or different) more than once in the quarter.

2 people were booked into long-term accommodation. This is consistent with previous periods.

5 people were booked into hostel accommodation. This is consistent with previous quarters.

Outreach and BBS teams across Kensington and Chelsea achieved a confirmed reconnection with 6 people they contacted this quarter. This is 6% of the people contacted by outreach or BBS teams this quarter.

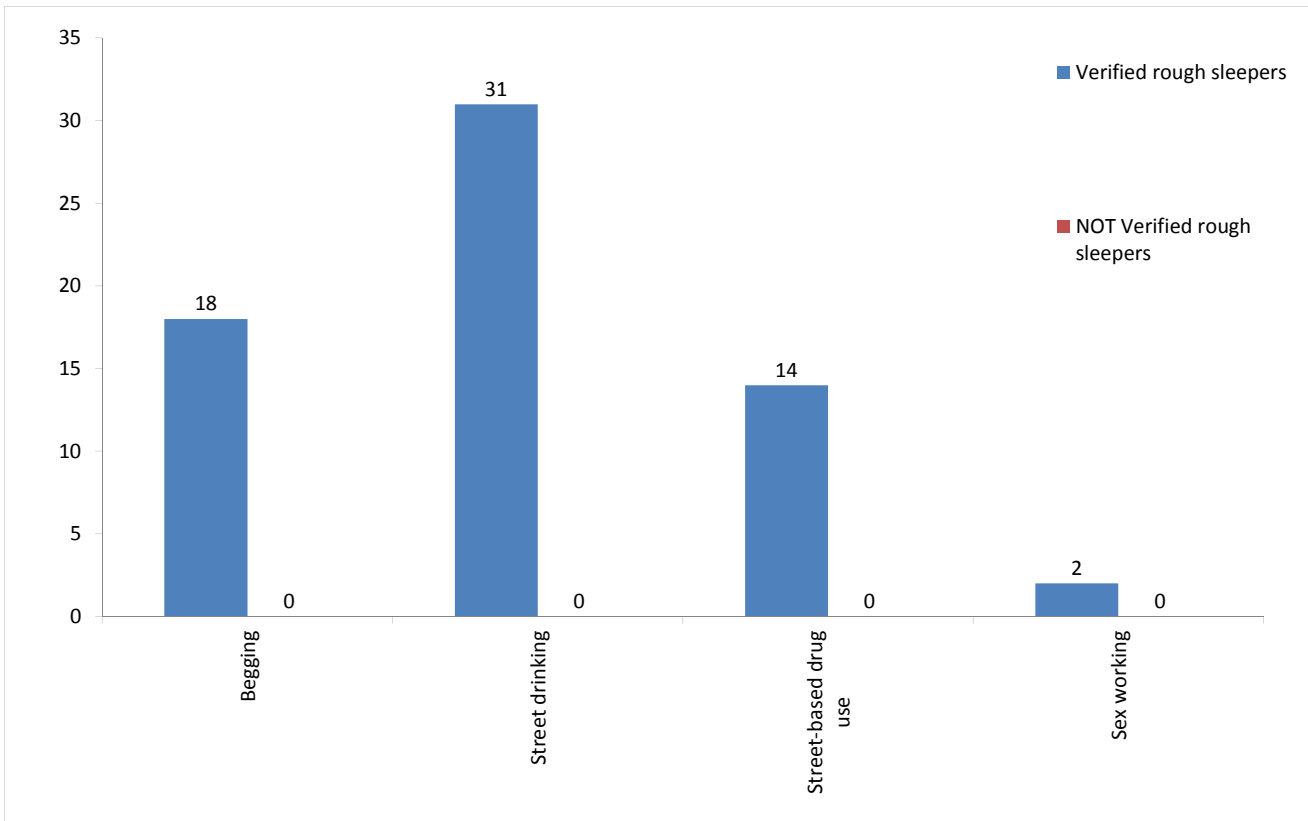
7 advised and confirmed reconnection events were recorded by outreach and BBS teams for verified rough sleepers this quarter. In addition, teams recorded 0 such actions for the wider street population (people not seen sleeping rough).

\* These events are excluded from the total. Referral to hostel is a speculative referral to a hostel, confirmation of which leads to a booking in action being recorded.



## 7) Street activity

Street population (people who rough sleep and/or engage in a street lifestyle) contacted by outreach who fall into one or more of the street activity categories on CHAIN



Base for verified rough sleepers: 43

Base for people not verified as rough sleepers: 1

Of the 109 verified rough sleepers contacted this quarter, 43 (39%) have been assessed as engaging in one or more street activities.

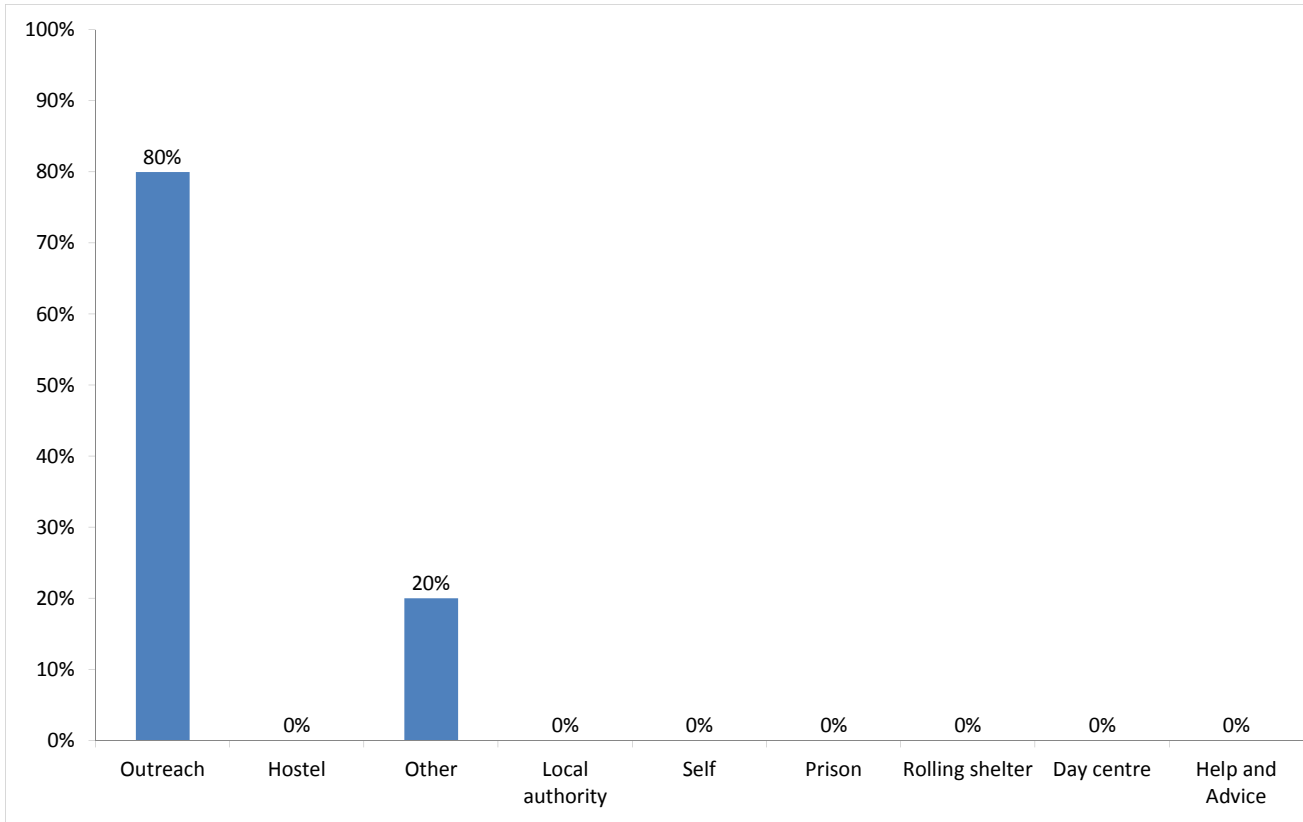
Some of these people contacted this quarter have been seen engaging in more than one type of street activity at some point.

In addition to the 109 verified rough sleepers contacted in the quarter by outreach or BBS teams, 1 person who is considered vulnerable but has not been seen rough sleeping was also contacted.

## Temporary Accommodation: hostels, assessment centres, rolling shelters and second stage

### 8) Arrivals

Temporary accommodation arrivals by accommodation project and source of referral.



Base: 5

5 people arrived at accommodation in Kensington and Chelsea this year. These 5 people had 5 arrival actions. This indicates that an individual can arrive more than once (at the same accommodation project or different) in a period.

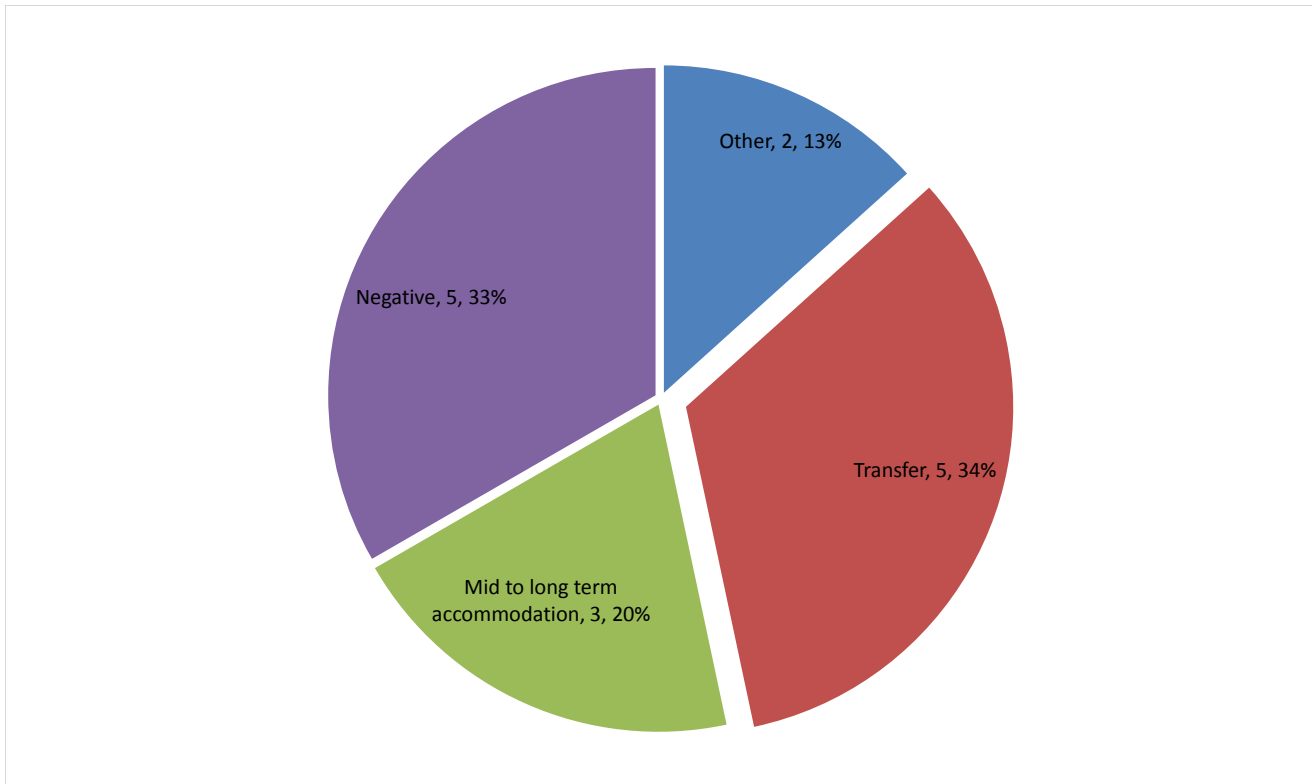
The numbers of people arriving and arrivals are consistent with previous periods.

#### Breakdown by accommodation:

Source of referral	Accommodation		Total
	K & C SIT	other referral source)	
St Mungo's - Cromwell Road	4	1	5
<b>Total</b>	<b>4</b>	<b>1</b>	<b>5</b>

## 9) Departures - destination on departure

Departure actions by destination on departure



Base: 15

Destination categories on CHAIN	Chart category	Colour
Care home, Clearing House/RSI, Home area, Hospital - long term, LA tenancy (general needs), Long-term accommodation, Previous home, Private rented sector - independent, Private rented sector - supported, RSL tenancy (general needs), Sheltered Housing, Supported Housing	Mid to long term accommodation	
Bed & Breakfast, Detox clinic, Hostel, Hostel - another organisation, Hostel - within the organisation, Rehab clinic, Temporary accommodation, Psychiatric hospital, Hospital - NOT long term/acute care	Transfer	
Not known, Sleeping rough/returned to streets, Taken into custody	Negative	
Died, Outside London, Staying with family, Staying with friends	Other	

Destination on departure from temporary accommodation	Number	%
Accomm where client is occupier	0	0%
Bed & Breakfast	0	0%
Care home	0	0%
Clearing House/RSI	1	7%
Detox clinic	0	0%
Committed suicide	0	0%
Died	0	0%
Home area	0	0%
Hospital	0	0%
Hospital - long term	0	0%
Hospital - NOT long term/acute care	0	0%
Hostel	0	0%
Hostel - another organisation	2	13%
Hostel - within the organisation	2	13%
LA tenancy (general needs)	2	13%
Long-term accommodation	0	0%
Not known	4	27%
Outside London	0	0%
Previous home (describe type of accomm in notes)	0	0%
Private rented sector - independent	0	0%
Private rented sector - with some floating support/support	0	0%
Psychiatric hospital	0	0%
Rehab clinic	1	7%
Returned to home country (CEE)	0	0%
Returned to home country (non CEE)	0	0%
RSL tenancy (general needs)	0	0%
Sheltered Housing	0	0%
Sleeping rough/Returned to streets	1	7%
Staying with family	0	0%
Staying with friends	2	13%
Supported Housing	0	0%
Taken into custody	0	0%
Temporary accommodation	0	0%
<b>Total</b>	<b>15</b>	<b>100%</b>

26% of people left accommodation to move to another hostel. This is an increase on the previous three periods: Oct-Dec 0%; July-Sept 0%; Apr-June 17%.

20% of people left accommodation to move to mid to long-term accommodation. This is a decrease on the previous three periods: Oct-Dec 57%; July-Sept 33%; Apr-June 42%.

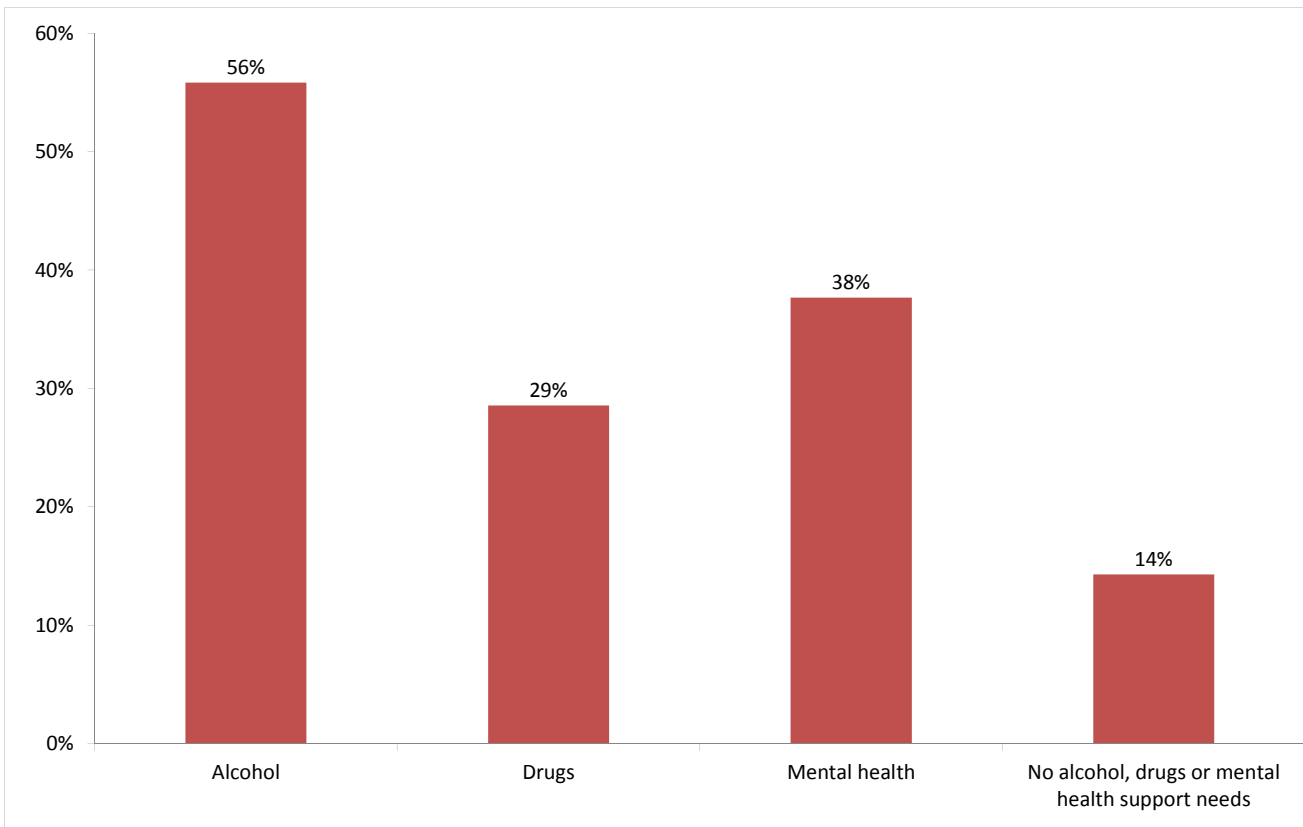
#### Breakdown by accommodation

Destination Accommodation									Total
	Clearing House/RSI	Hostel - another organisation	Hostel - within the organisation	LA tenancy (general needs)	Not known	Rehab clinic	Sleeping rough/Returned to	Staying with friends	
Look Ahead - Earl's Court	1	2	1		3	1		1	9
St Mungo's - Cromwell Road			1	2			1	1	5
St Mungo's - Redcliffe Gardens					1				1
<b>Total</b>	<b>1</b>	<b>2</b>	<b>2</b>	<b>2</b>	<b>4</b>	<b>1</b>	<b>1</b>	<b>2</b>	<b>15</b>

## Client Support Needs/Institutional History

### 10) Support needs

People contacted by outreach or BBS teams and/or arriving in accommodation in the quarter by support needs



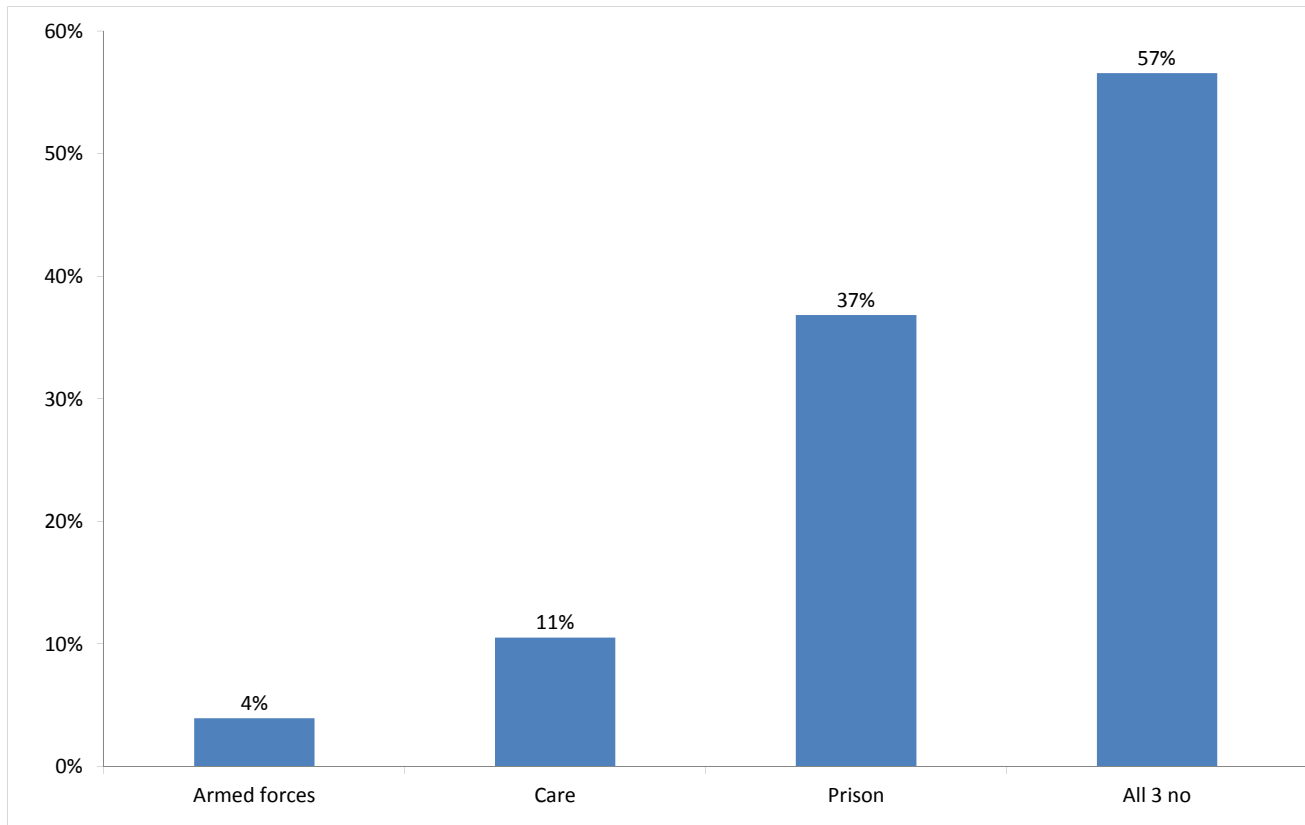
Base: 77 Note that the base figure for this graph excludes clients where all 3 support needs are not known or not recorded (40).

Support Needs	No. of people	%
Alcohol only	21	18%
Drugs only	5	4%
Mental health only	15	13%
Alcohol and drugs	10	9%
Alcohol and mental health	7	6%
Drugs and mental health	2	2%
Alcohol, drugs and mental health	5	4%
All 3 no	11	9%
All 3 not known or not assessed	40	34%
All 3 no, not known or not assessed	1	1%
<b>Total</b>	<b>117</b>	<b>100%</b>

The proportion of people contacted in Kensington and Chelsea with an alcohol, drugs or mental health support need is consistent with the previous two periods.

## 11) Experience of armed forces, care or prison

People contacted by outreach or BBS teams and/or arriving in accommodation in the quarter by experience of the armed forces, care or prison



Base: 76 Note that the base figure for this graph excludes clients where all 3 institutional histories are not known.

3 people contacted in Kensington and Chelsea this quarter have previously been in the armed forces (4 last quarter).

8 people contacted in Kensington and Chelsea this quarter have previously been in care (8 last quarter).

28 people contacted in Kensington and Chelsea this quarter have previously been in prison (24 last quarter).

It is possible for someone contacted to have previous experience of more than one institution and so be included in more than one of the above figures. 4 people contacted in the year have been in care and prison.

The proportion of people contacted in Kensington and Chelsea with previous experience of the armed forces, care or prison is consistent with the previous two quarters.